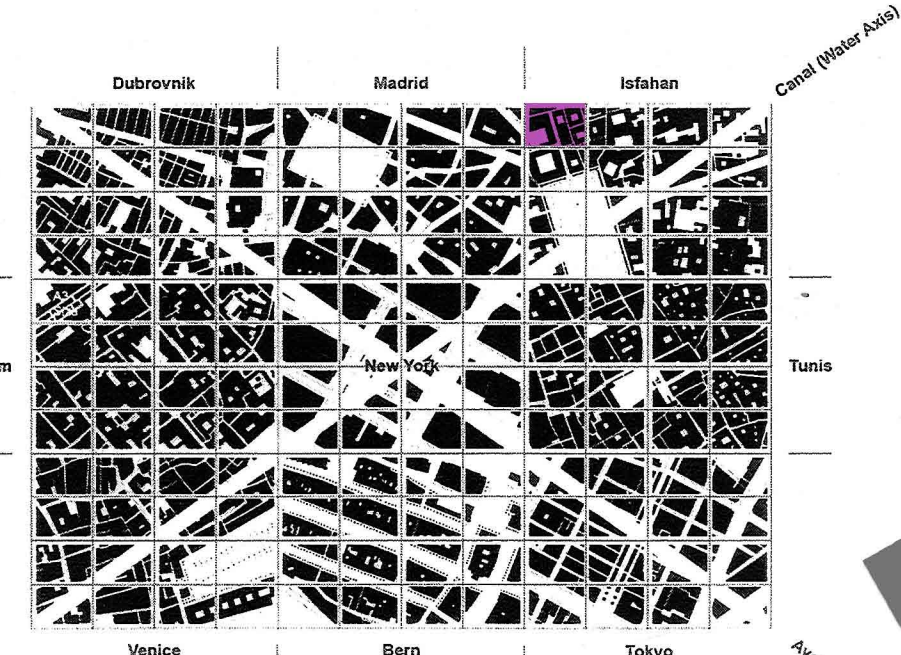


# A COURTYARD HOUSE OF ISFAHAN



SITE PLAN 1:10 000

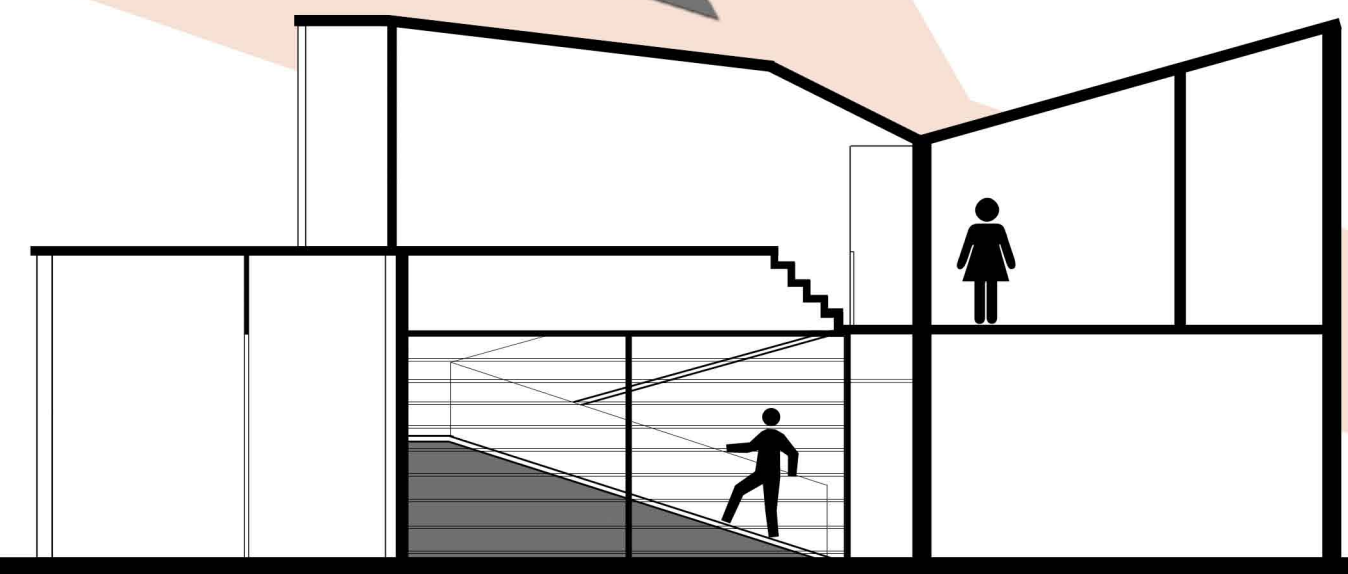
A9

“As one walks along, one can see how the architectural arrangement unfolds ... a real promenade architecture which continuously opens up changing, unexpected & sometimes astonishing views.”

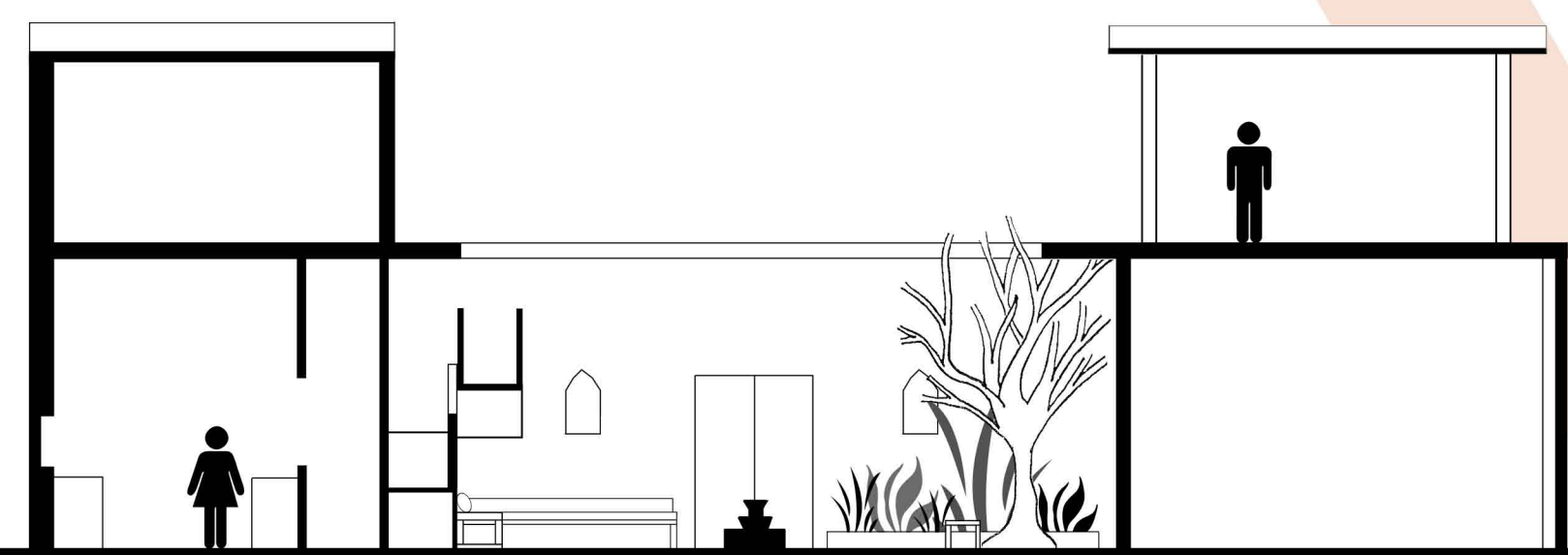
(Le Corbusier on Villa Savoye, Complete Works, 1921-34)

A building designed with its rooms opening onto a central courtyard has been a traditional design of both public and residential Islamic architecture throughout Islamic history. This courtyard-based design has not escaped the city of Isfahan – for its many successes in combating the Iran climate and sustaining a defensive building for its inhabitants, it has remained timeless. It was my intention to design this courtyard-based building in the context of a residential home and explore and exploit its traditional foundations, yet still ensure a consistency and coherency throughout the entire site.

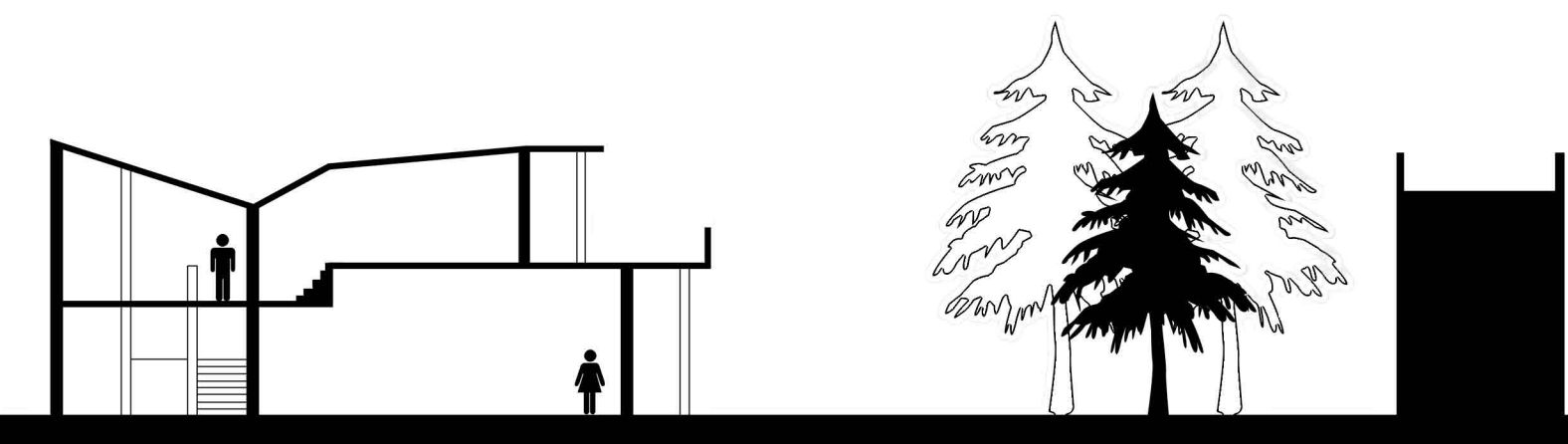
Taking inspiration from courtyard house architecture all around the world, architects such as Le Corbusier and urban designers such as Gordon Cullen, I sought out a design that would make circulation throughout my courtyard house an experience of levels, vision, light, scale, texture and colour. With a lush, earthy courtyard in the centre of the house, rooms and spaces are positioned as if growing out from this courtyard heart. With a staircase and a ramp, inhabitants experience going up levels in two completely separate ways with different exposure to views and light.



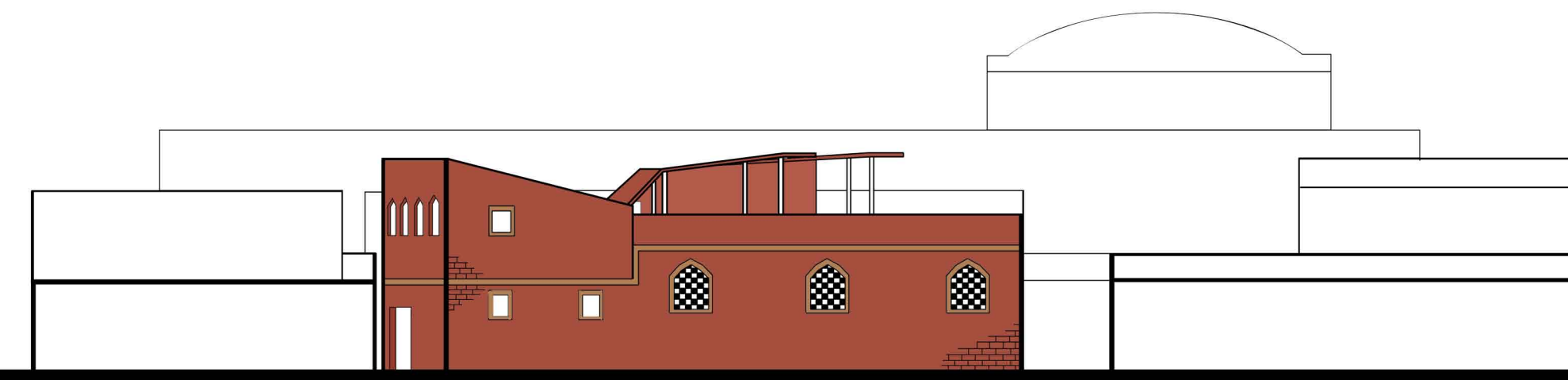
SECTION AA 1:100



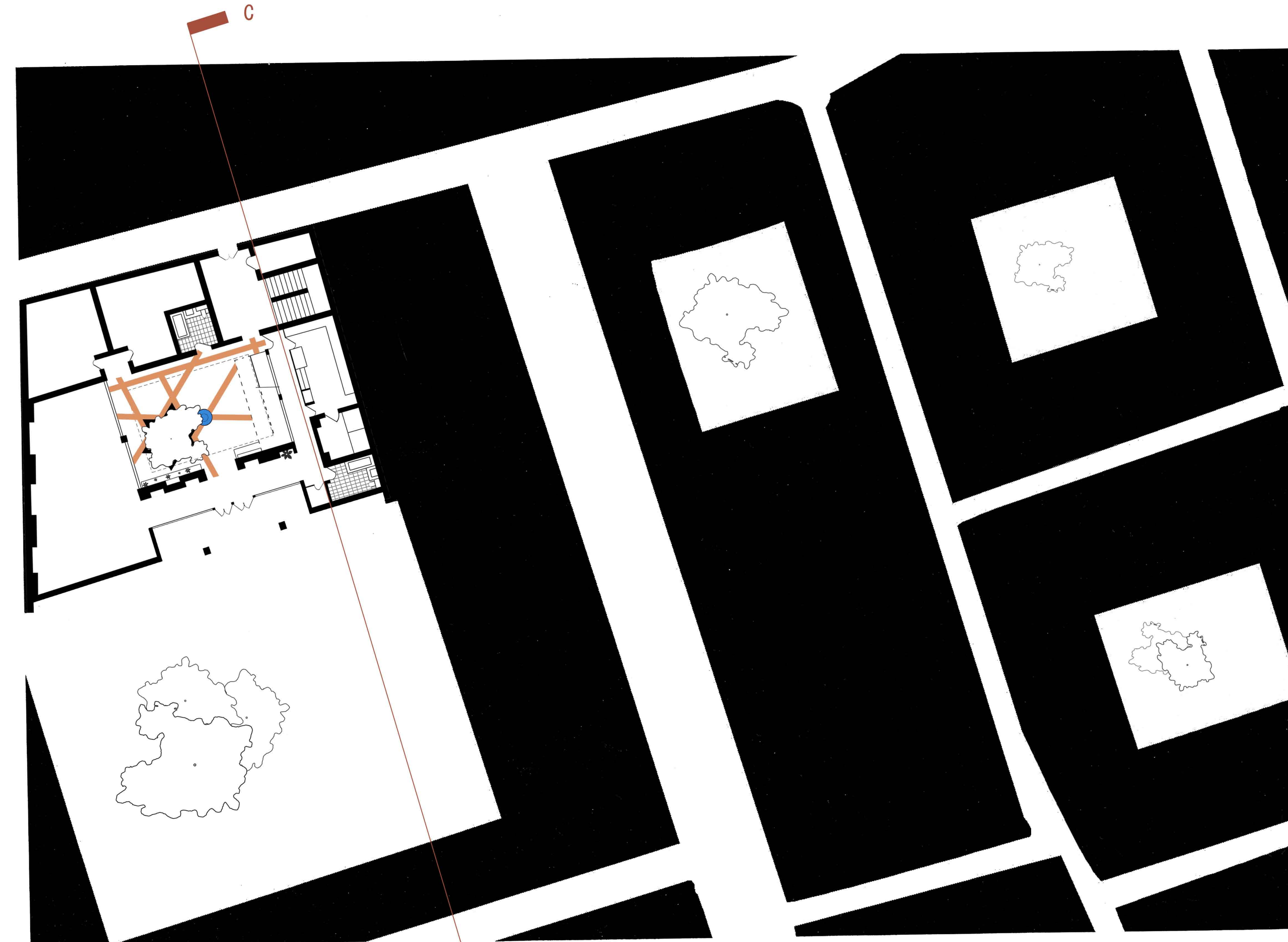
SECTION BB 1:100



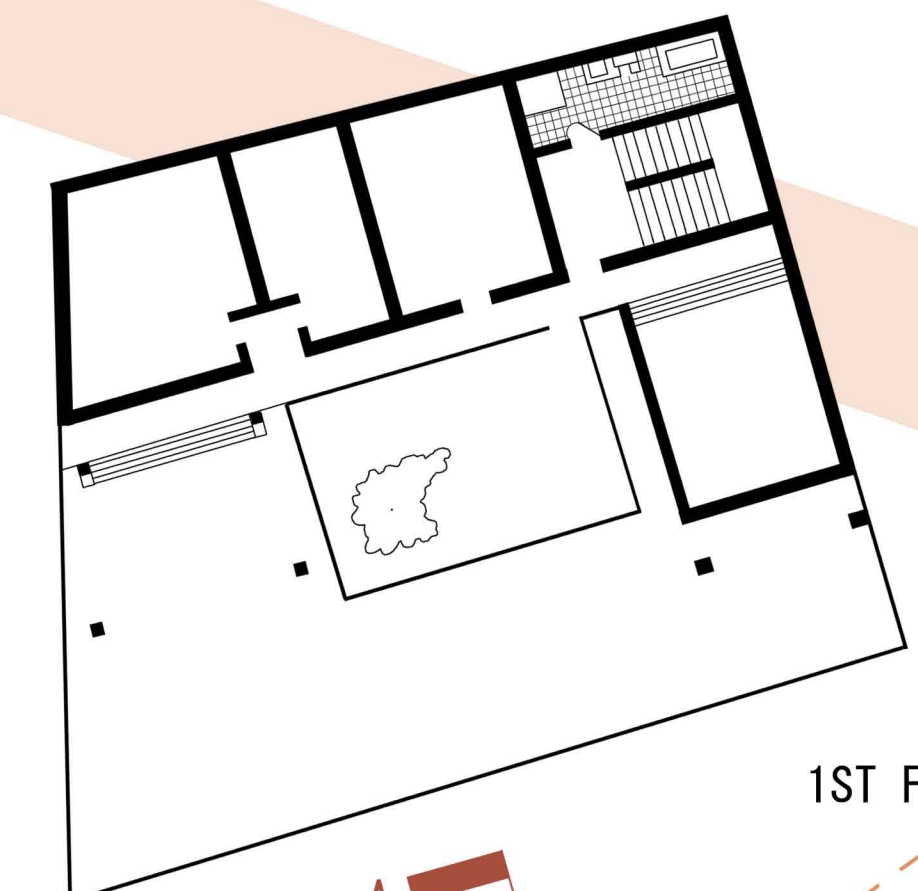
SECTION CC 1:200



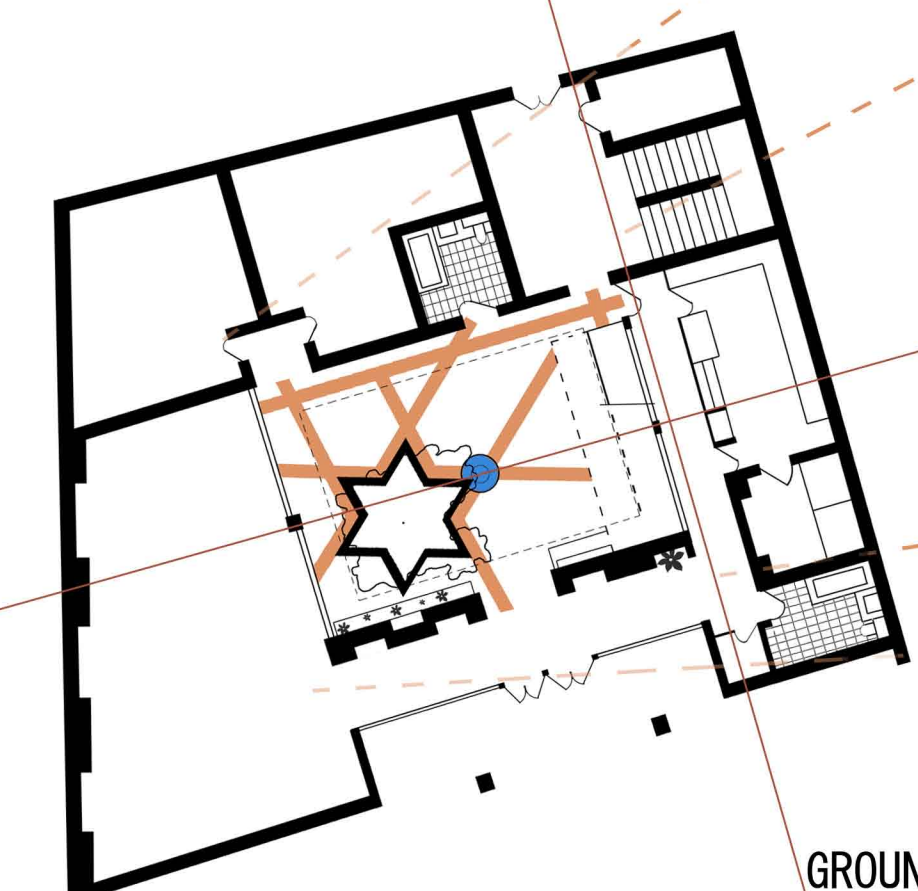
ELEVATION 1:200



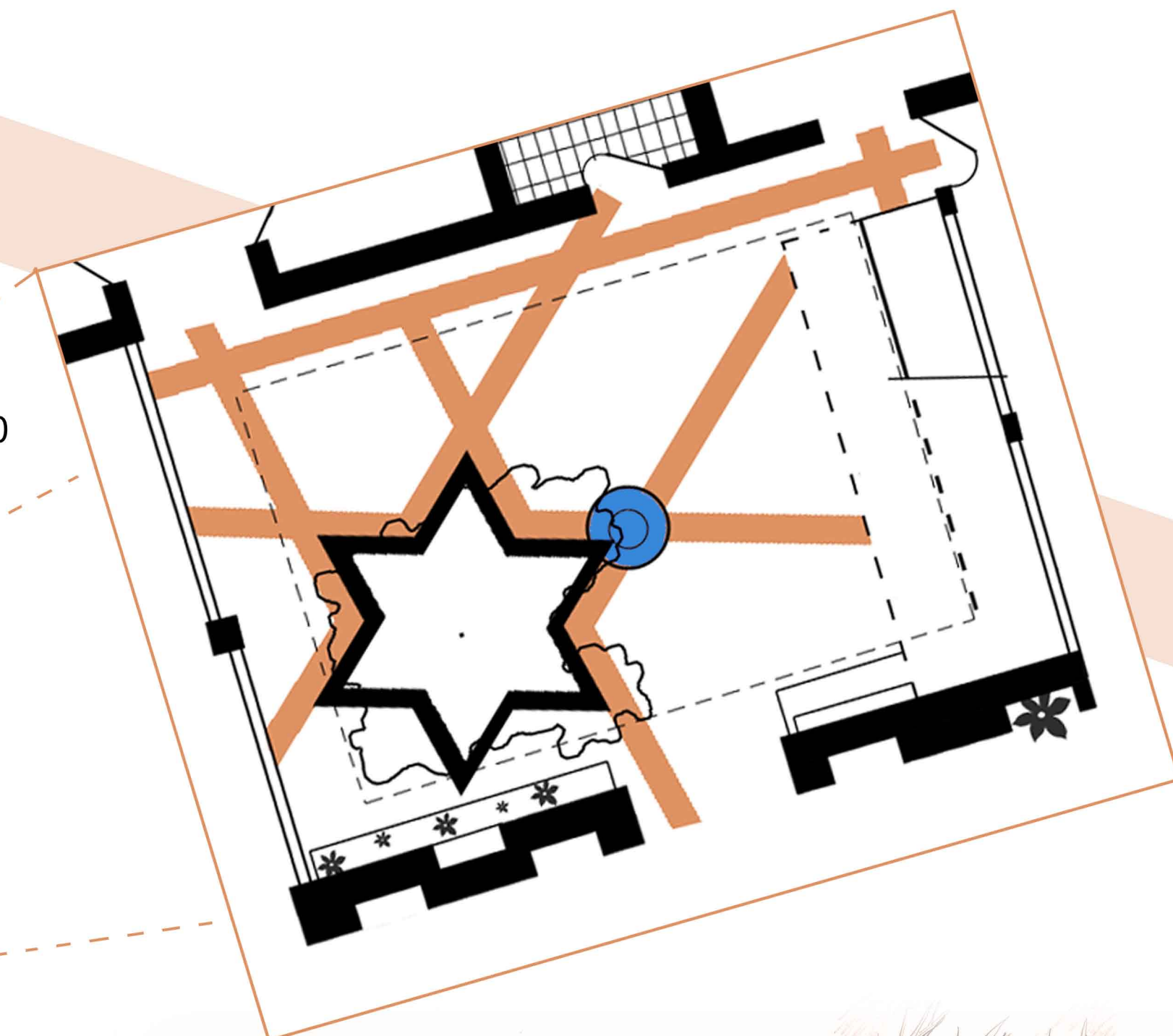
AERIAL PLAN 1:200



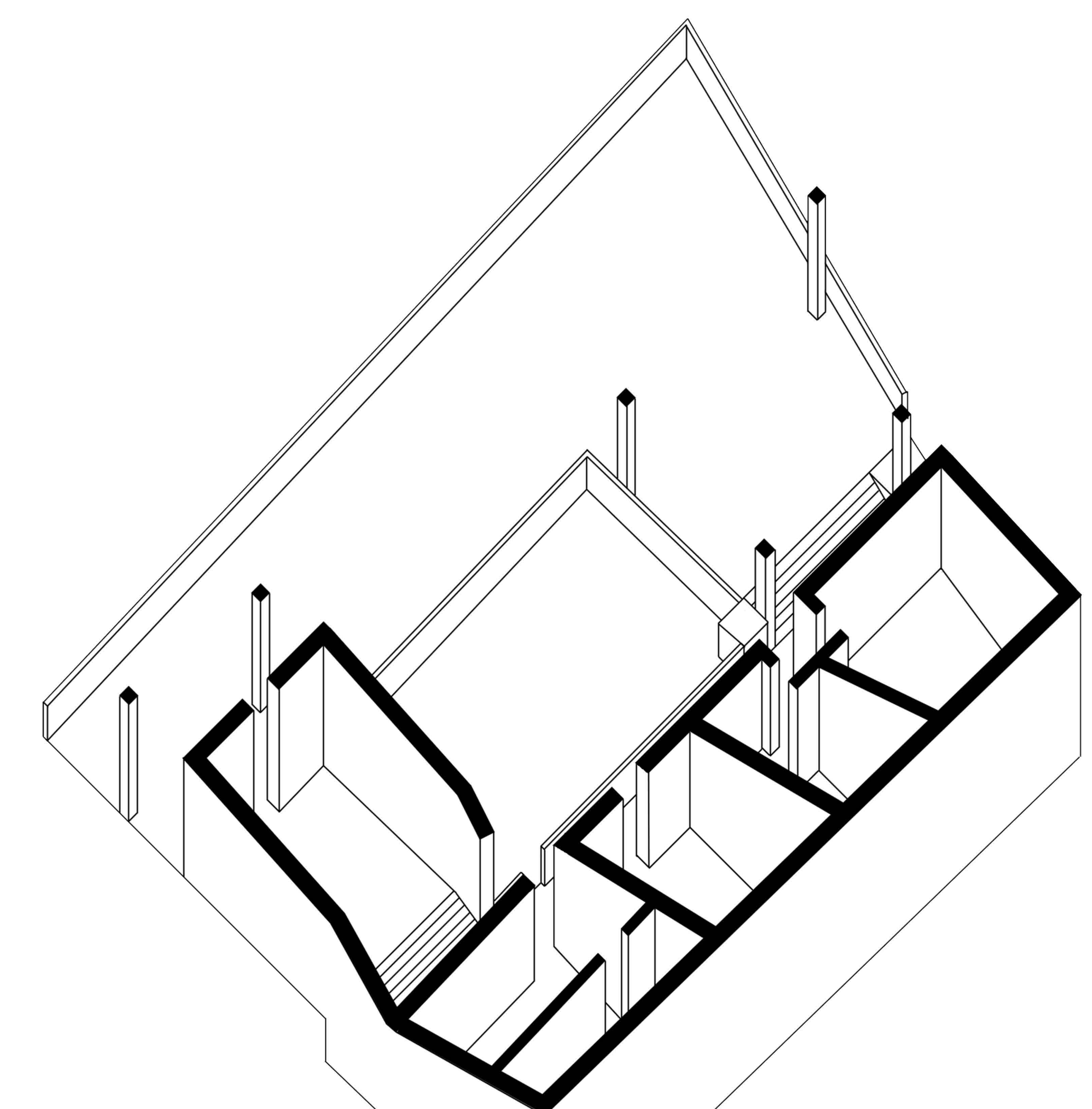
1ST FLOOR PLAN 1:200



GROUND PLAN 1:200



HAND DRAWN PERSPECTIVE



AXONOMETRIC 1:100