

ירושלים

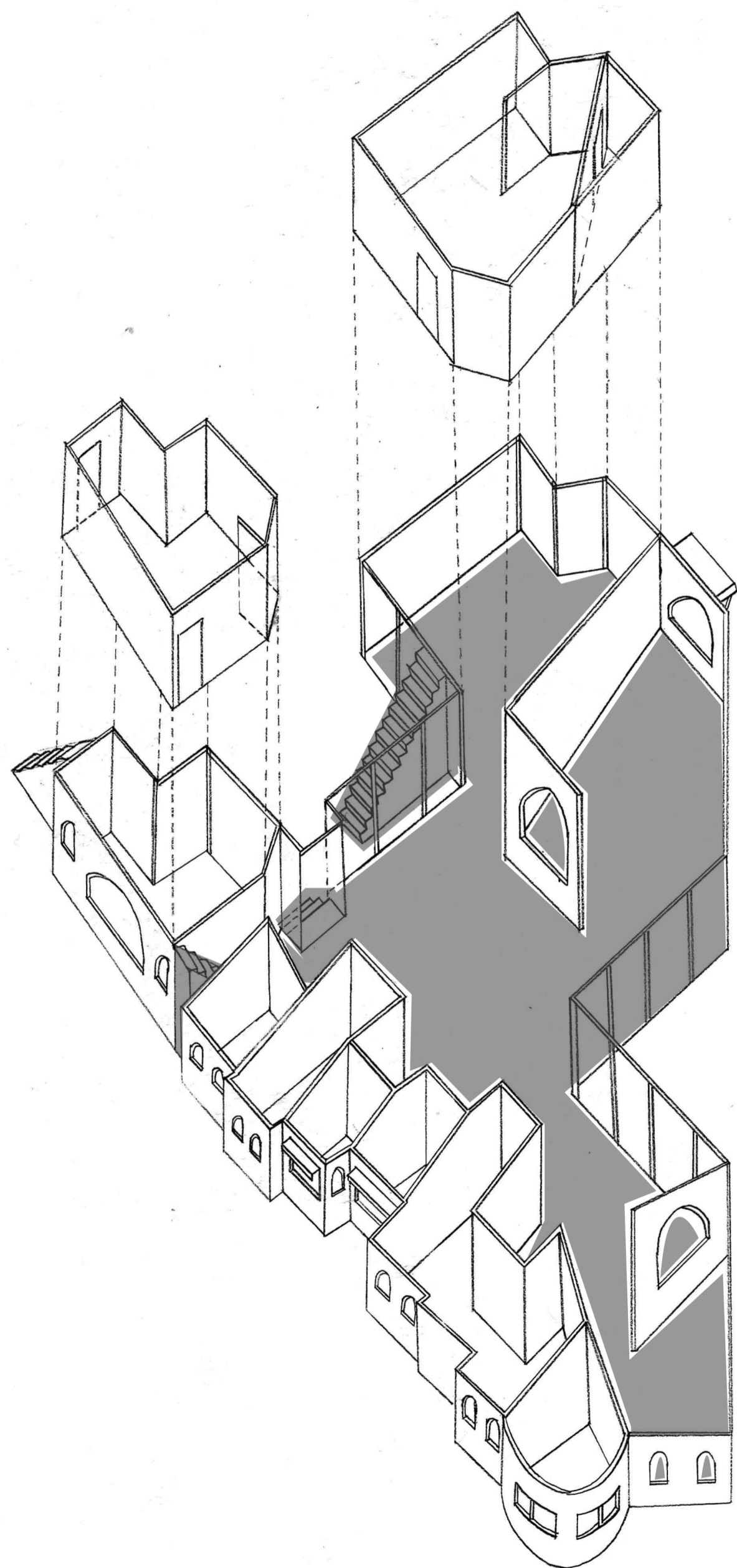


Backpacker accomodation

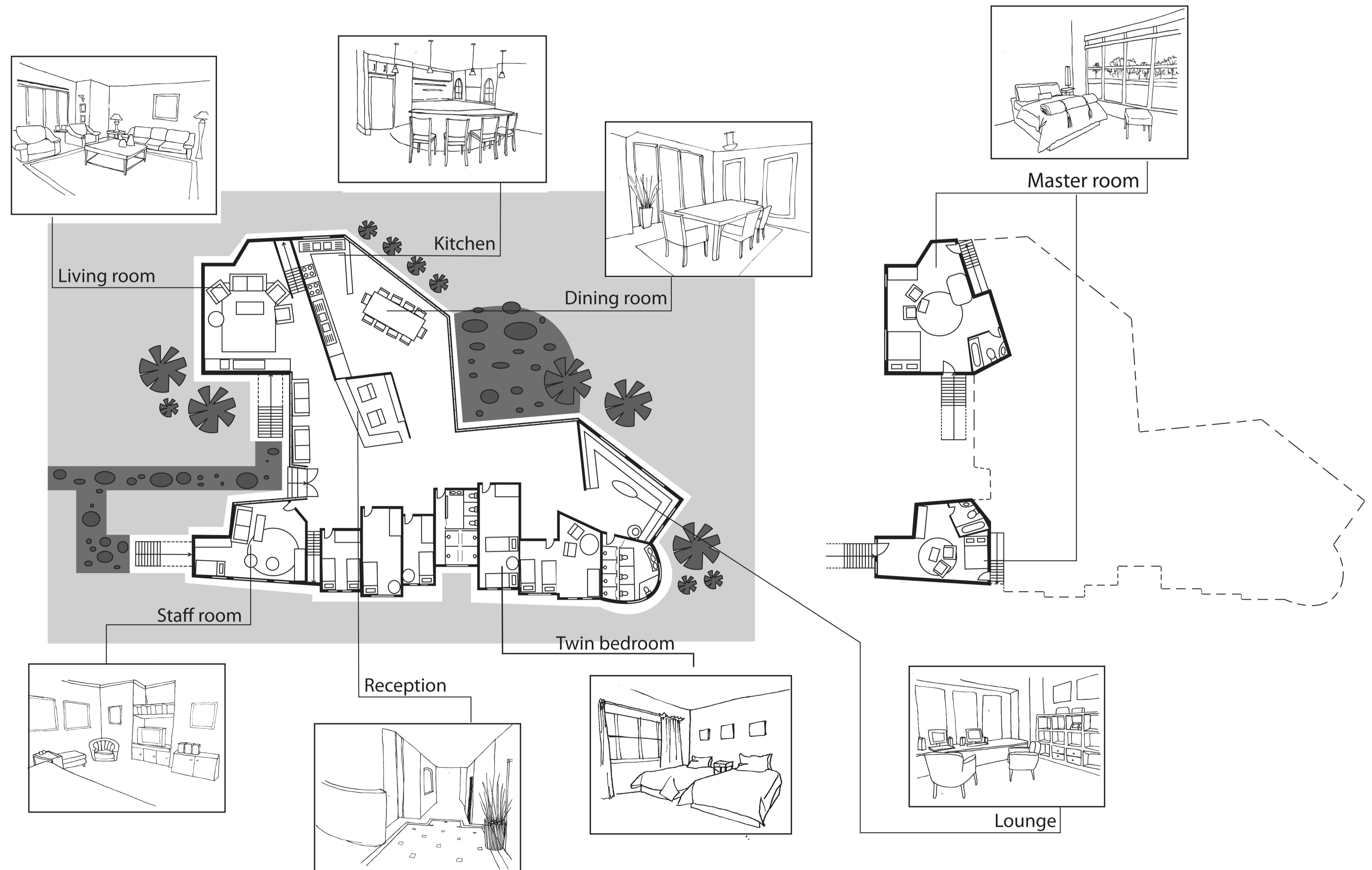
Jerusalem is the capital of Israel and its largest city in population and area as well as it has great religious history, making it one of the famous tour spot. Due to the large numbers of the tourist, accommodation is one of the most important utility that the city must be obtained. The "Backpacker accomodation" in Jerusalem provides a joyful and informative space for a tourist to stay and rest.

One of the most interesting features of this building is the common area. Common area is situated in the centre of the building and this may provide great opportunity for the tourist to gain information and communicate with others. Additionally, bedrooms are assembled together at one spot which has nice view of canal. Unlike common area, all rooms have different size of roof which are made of tiles.

Rather than having a modern looking, this building is made mainly by a pale limestone with little windows. This traditional looking building may allow the tourists to engage more into the Jerusalem culture.



Axonometric 1:200



Lower Level Plan 1:200

Upper Level Plan 1:200