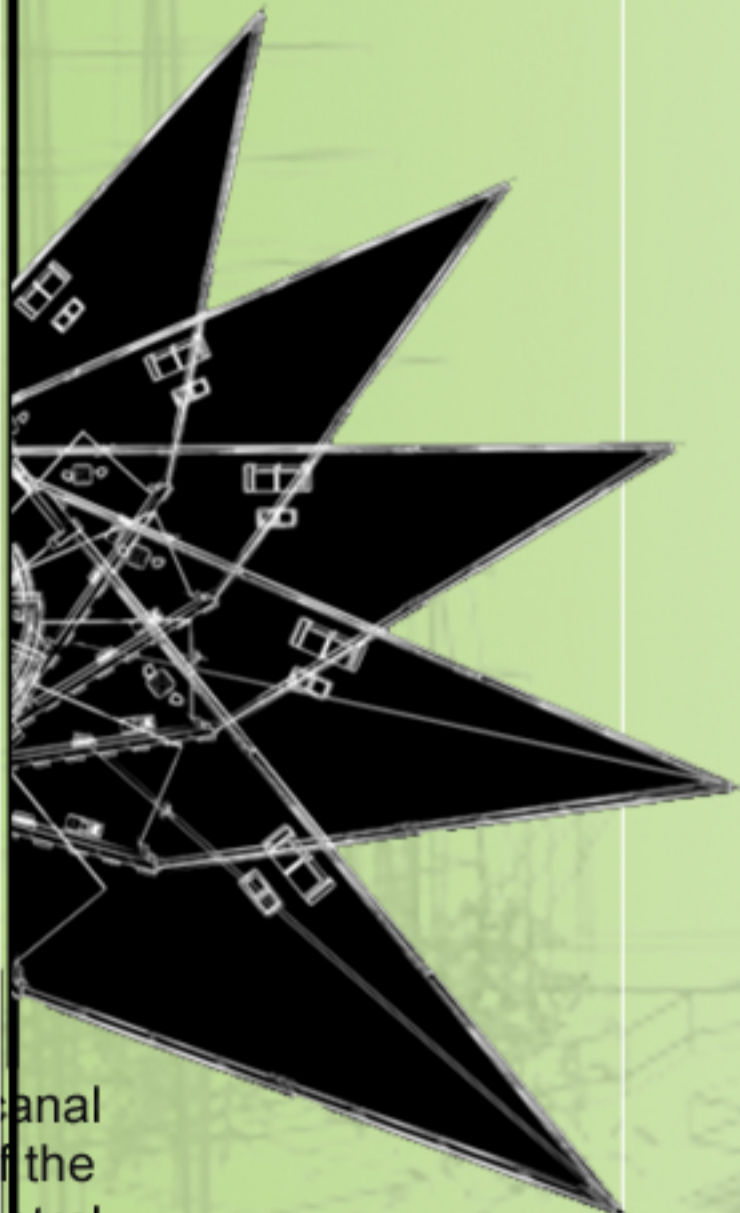


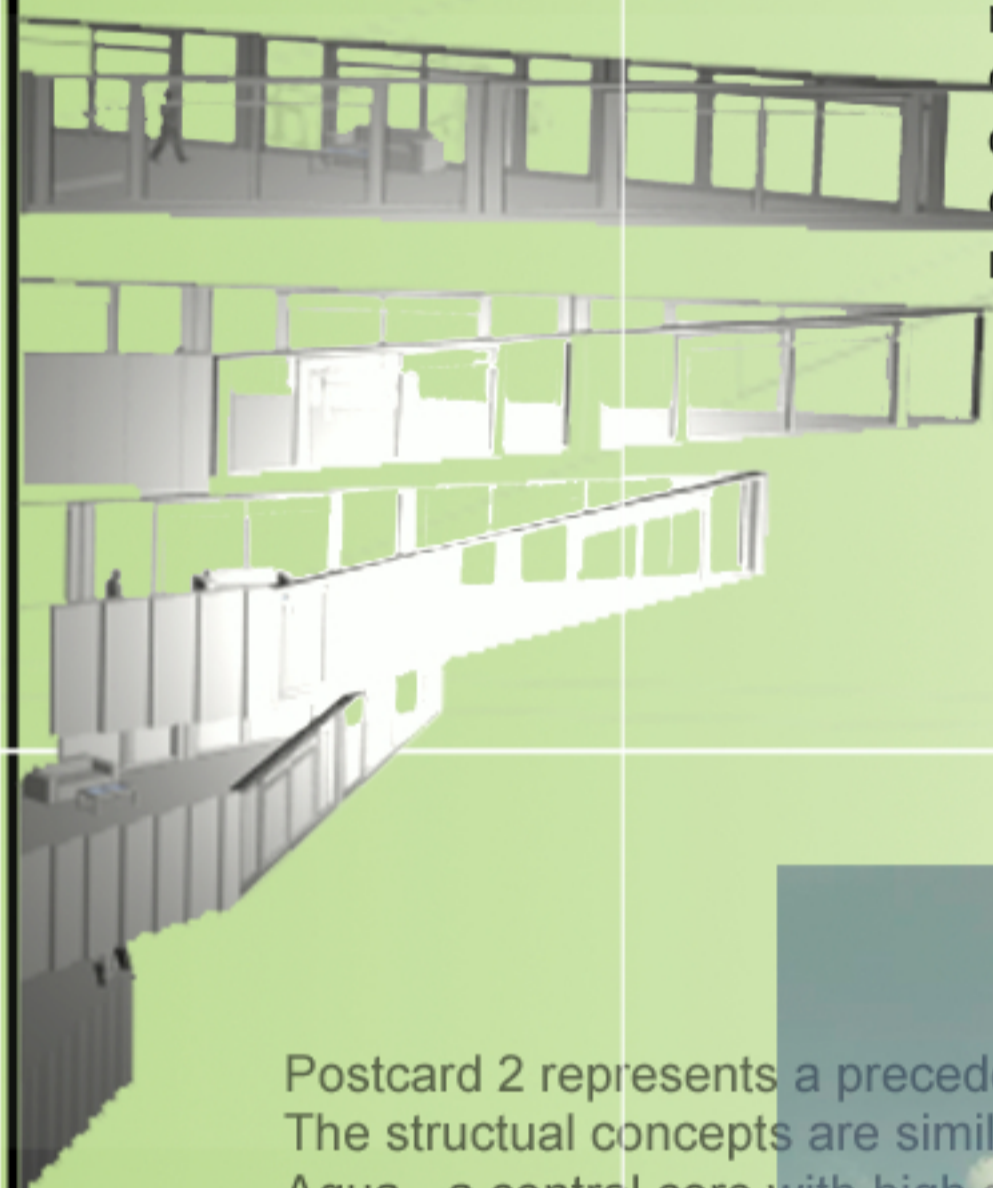
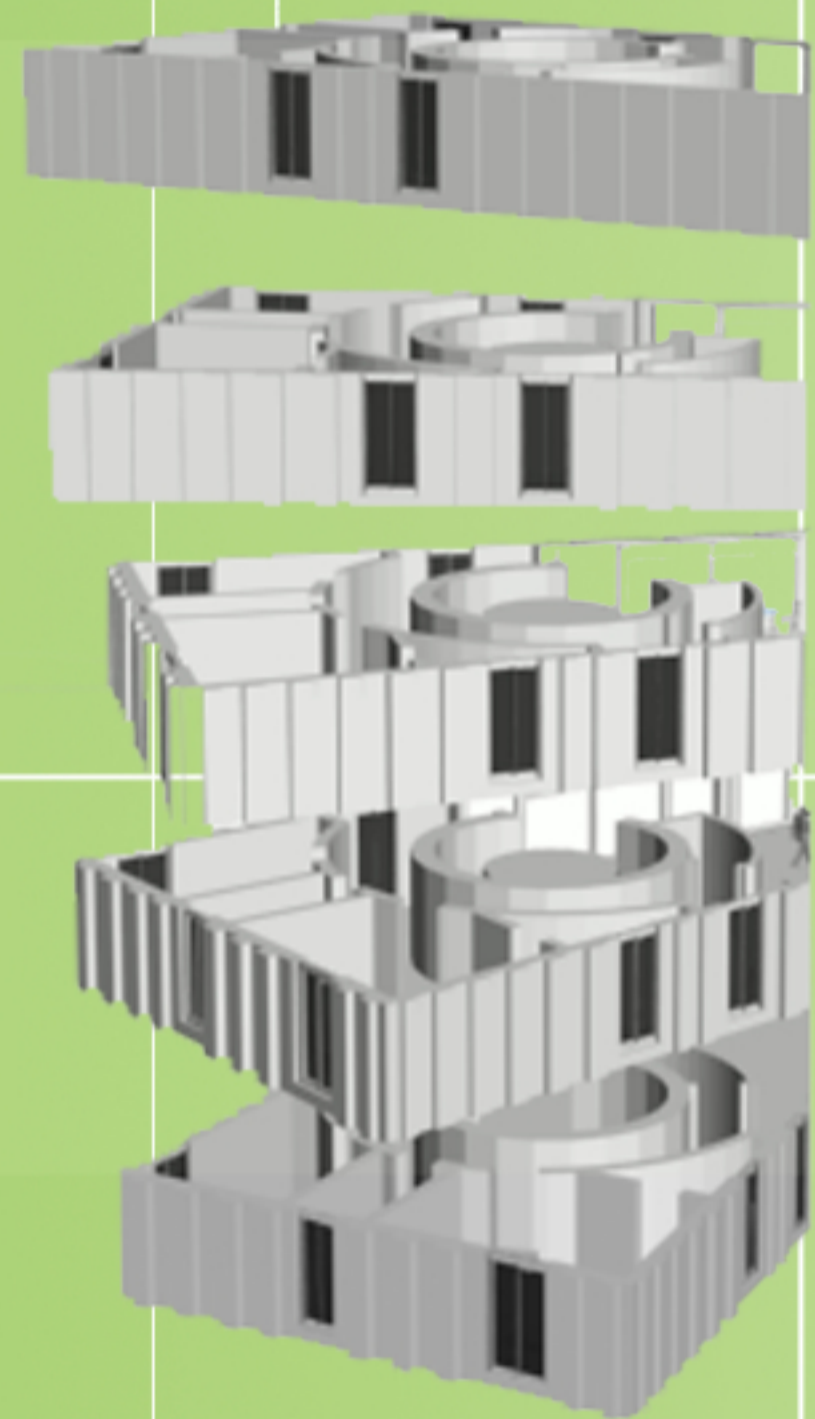
Aqua stands as a sculpture like building, a representation of freedom. Freedom from a world of quick movement and quick thinking.



**GARDEN CONCEPT**

Each floor is suspended towards the canal. Residents can view the water from the the ideal garden roof top where one is suspended in mid air, floating or even walking on water.

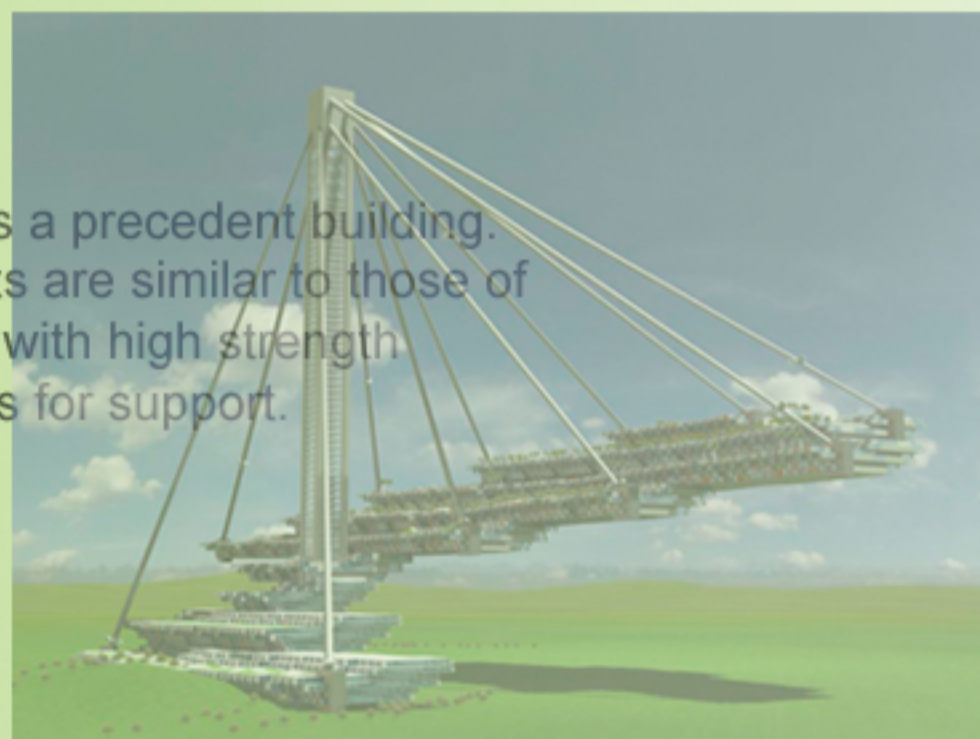
As each floor cantilevers out towards the canal efforts have been made to arrange most of the dead weight of the structure around the central core. The aerial wire image above shows this.



Closed vs open. Aqua rejects the 'Big Apple' and opens to embrace the canal, touching on the concept of freedom and a natural building.

**CLOSED vs OPEN**

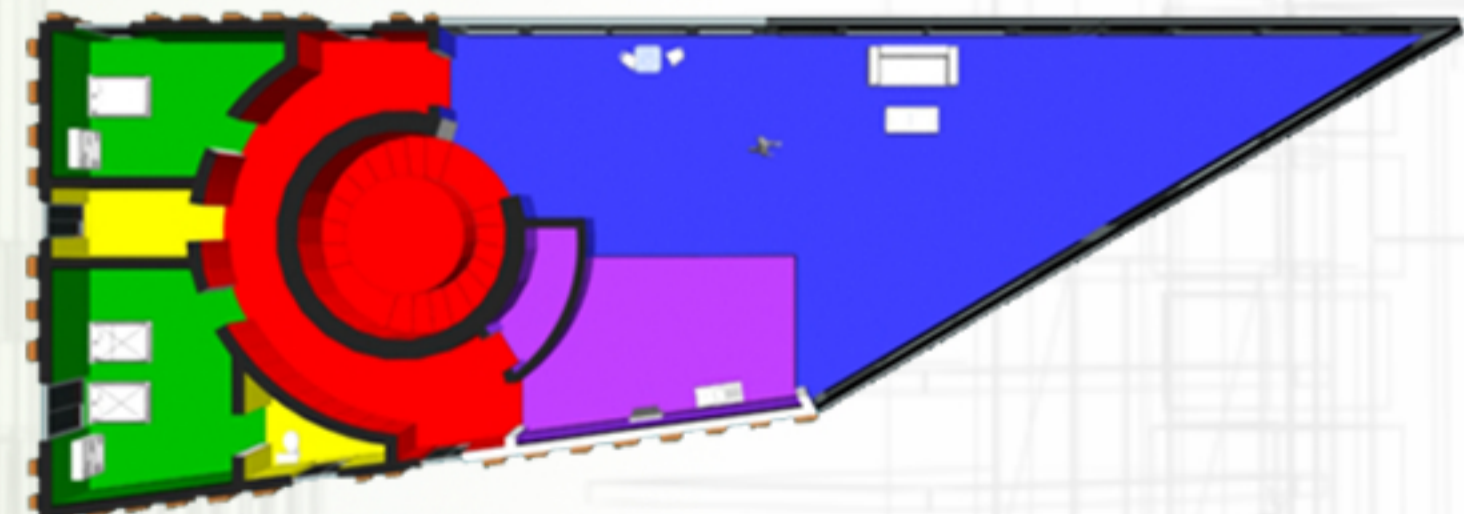
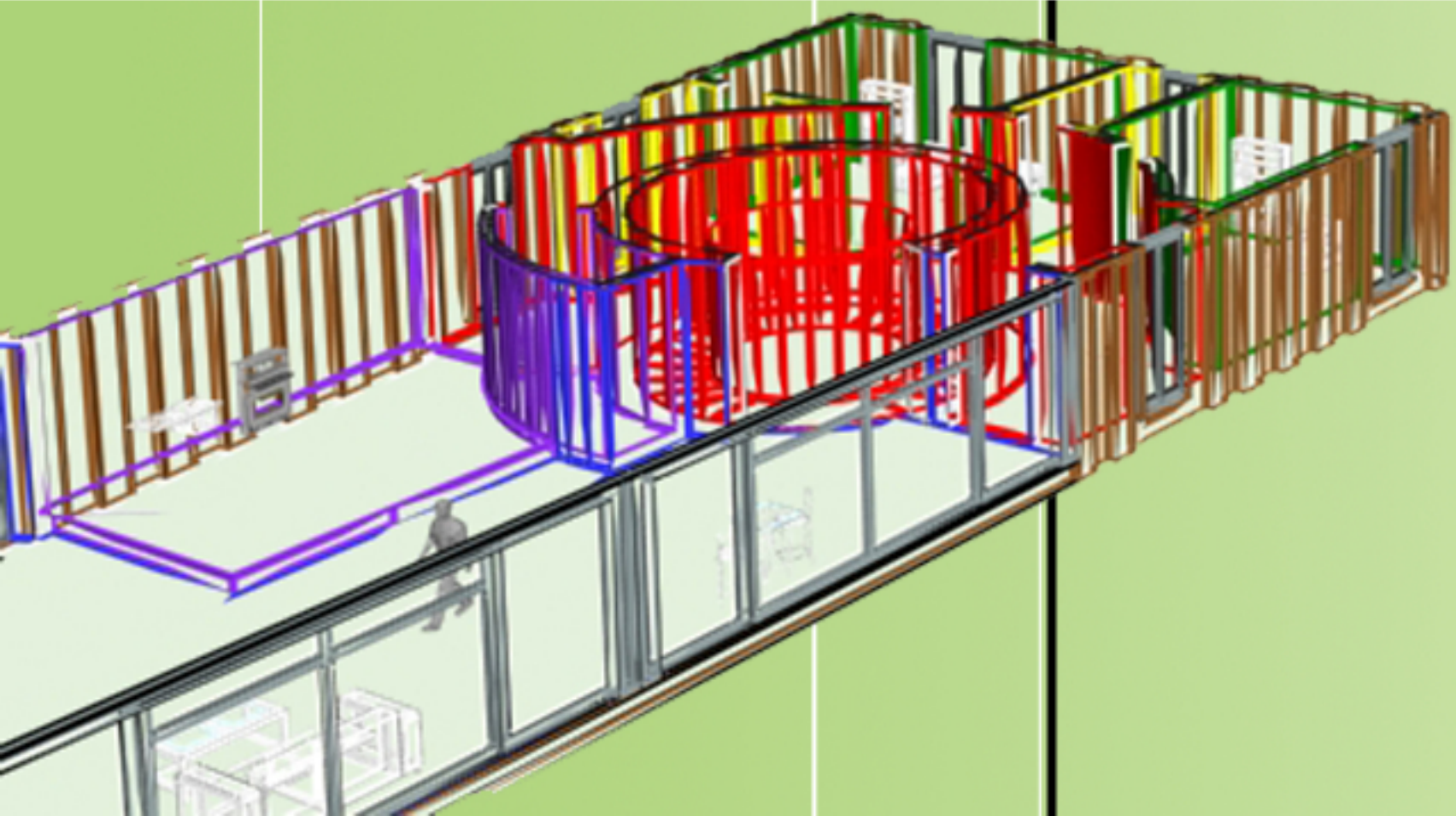
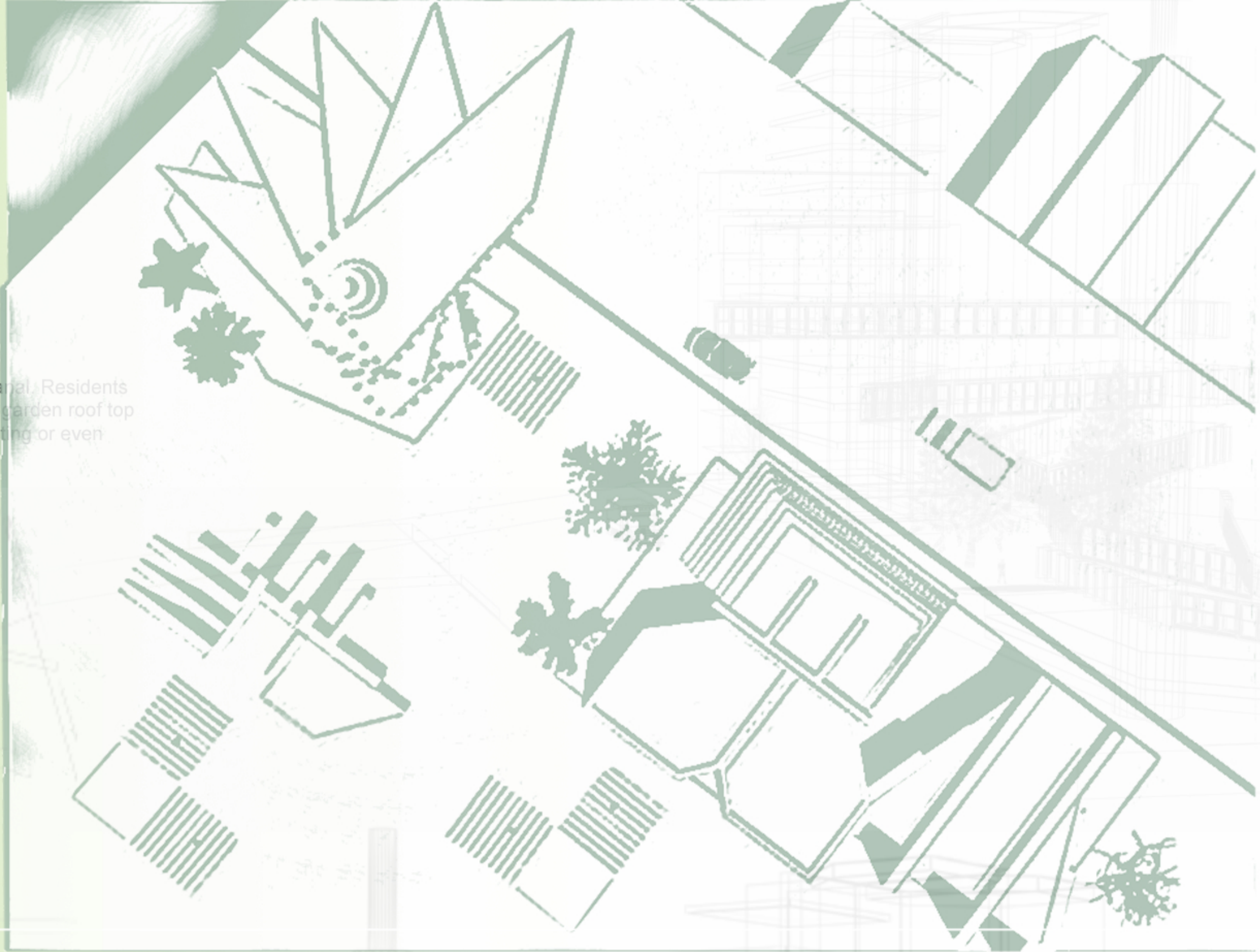
Postcard 2 represents a precedent building. The structural concepts are similar to those of Aqua - a central core with high strength tensioned steel cables for support.



**POSTCARD 2**

**AERIAL SITE PLAN 1:200**

The aerial site plan shows how Aqua rejects the rest of the site and focuses on the canal, a natural movement and flow of matter. This is the design concept.



The program plan shows the various functions of each apartment. The circulation path allows residents to walk around the entire plan, representing free movement. This also has a functional purpose as the space is quite large.

**PROGRAM PLAN 1:200**



**POSTCARD 3**



**FLOOR PLAN 1:200**