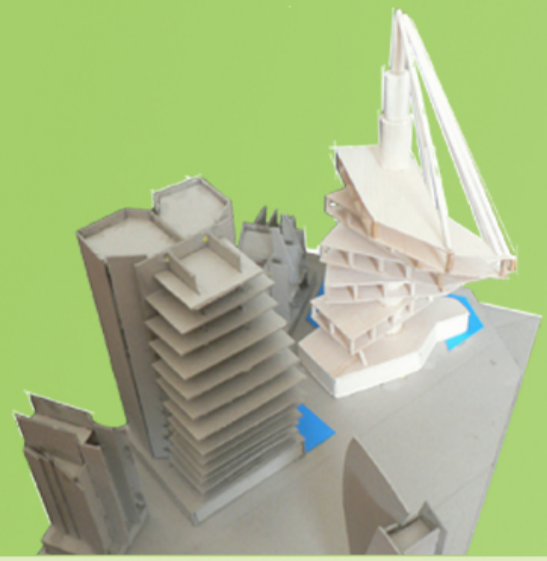


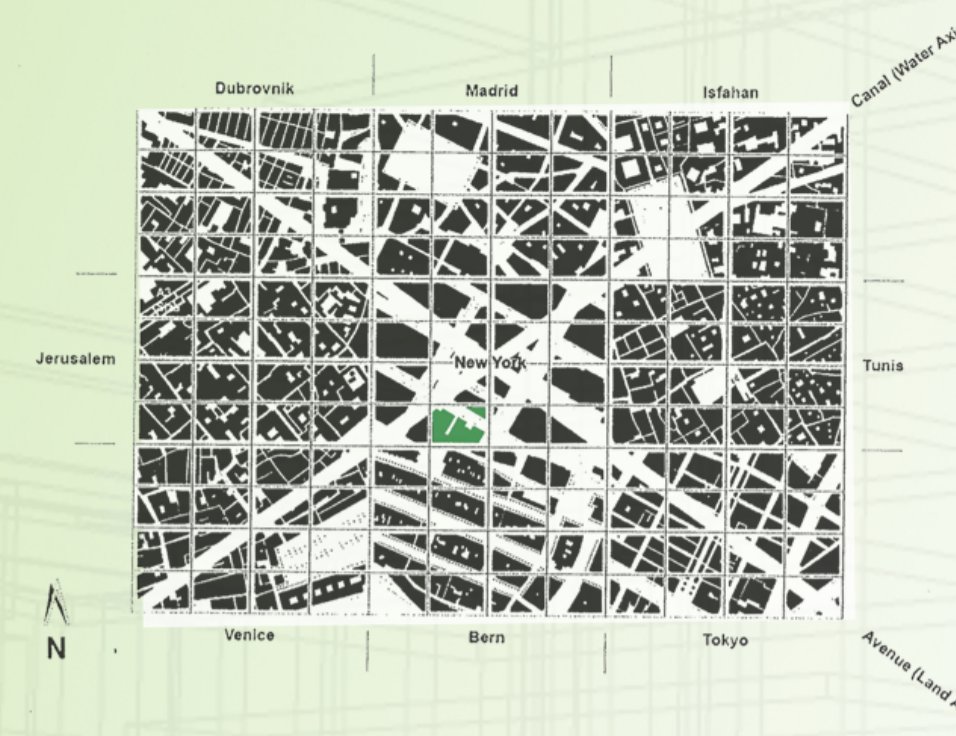
AZUA. Natural. Exclusive.

Orientated to face North West of the site and reject the hectic environment that the 'Big Apple' represents.

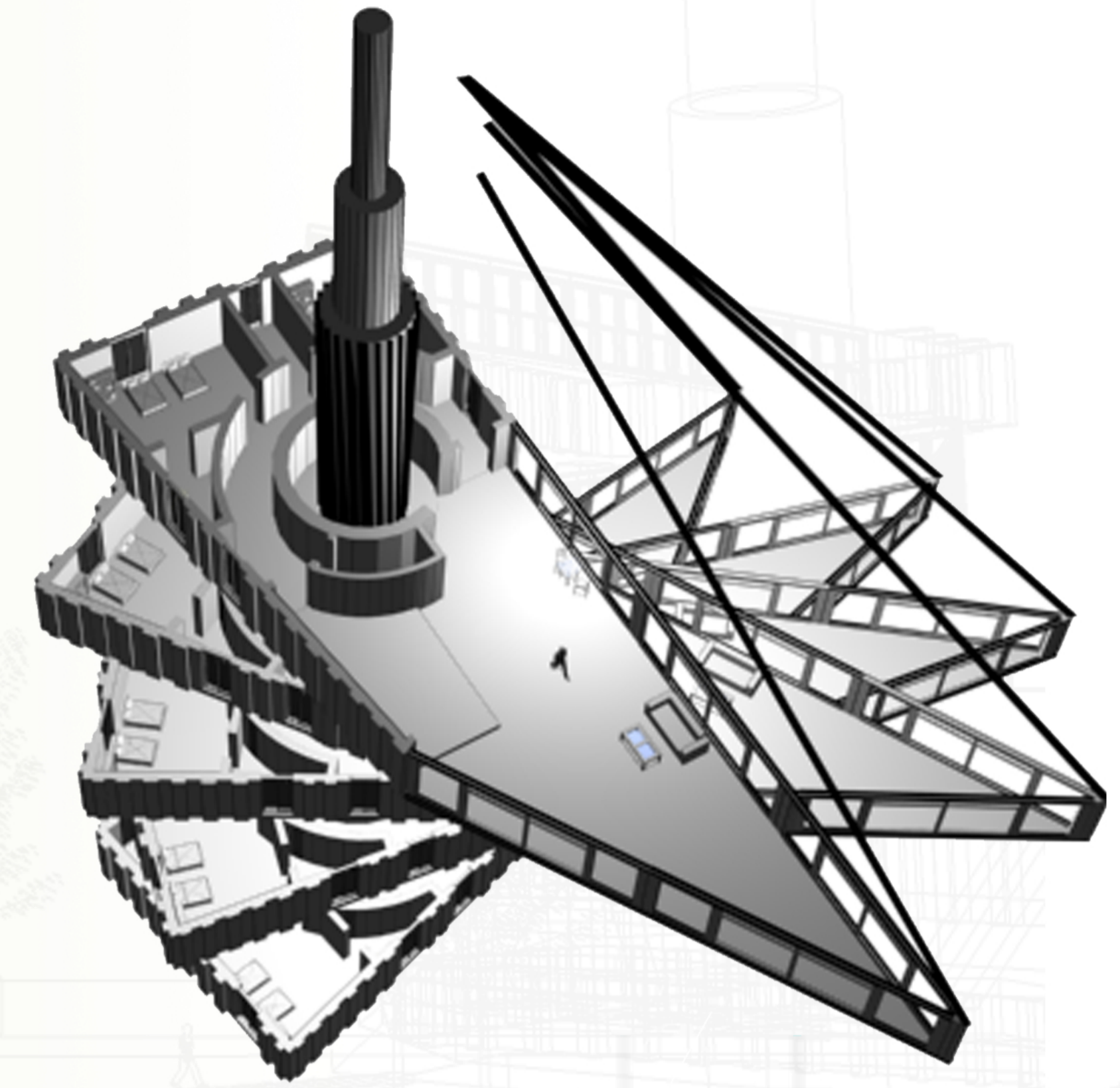
The major architectural features include five cantilevered like suspended apartments, a huge central core, a circular lift with stairs winding around, garden roof tops and tensioned steel cables.



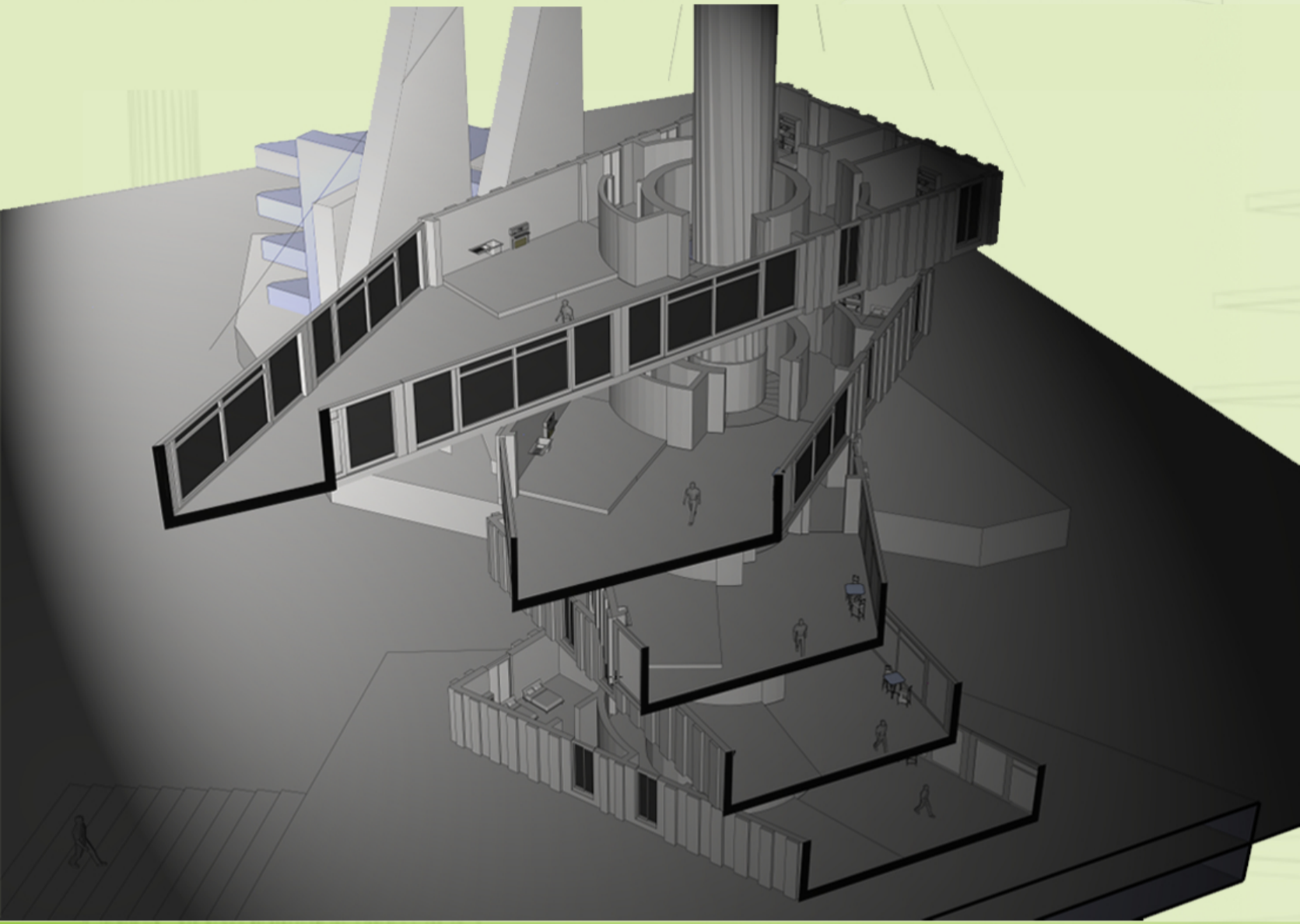
H6



**LOCATION PLAN
 1:10 000**



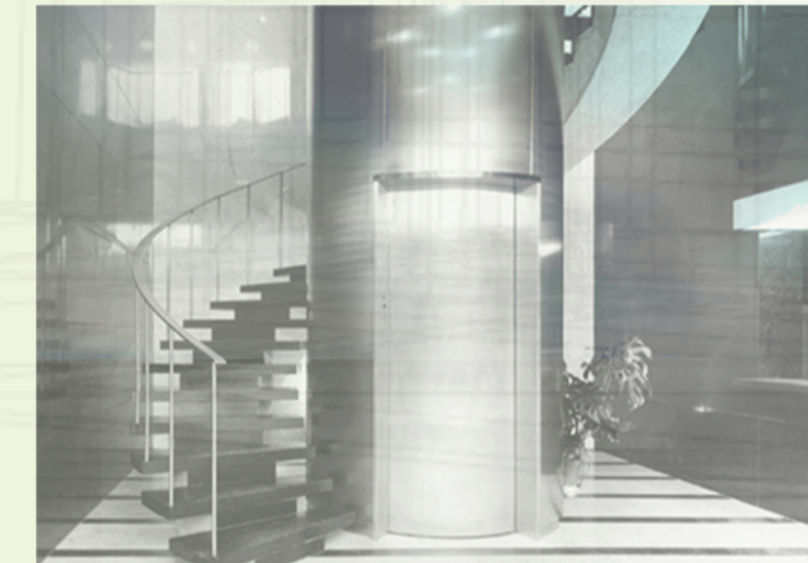
AXONOMETRIC 1:200



SECTION 1:200

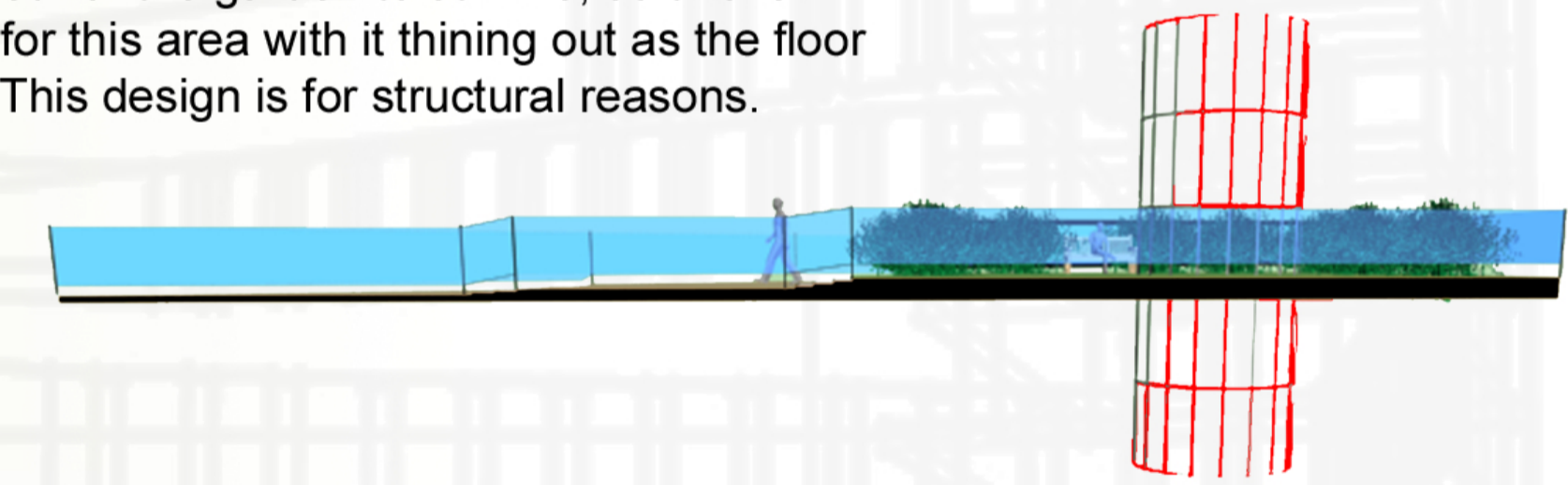


The circulation comprises of a circular lift running from the ground floor to each apartment and garden roof top. Spiral stairs wind around the lift as a second means of circulation between the various floors.



POSTCARD 1

The Garden Roof Top elevation shows where the garden sits. Soil is required for the garden to survive, so thicker concrete is used for this area with it thinning out as the floor cantileveres out. This design is for structural reasons.

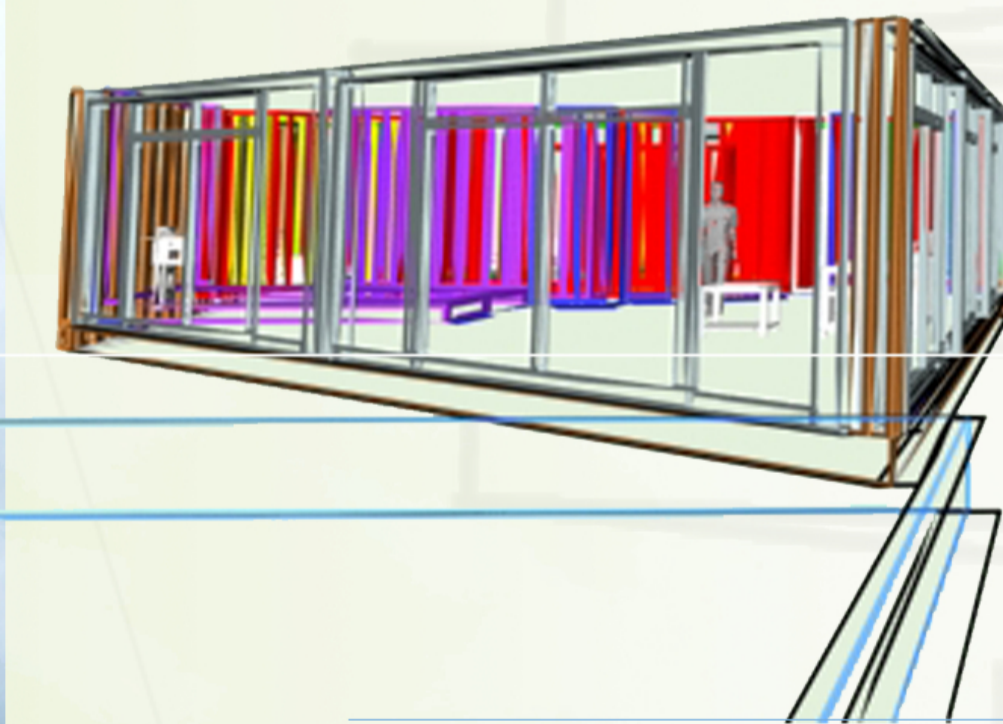


**ROOF TOP ELEVATION
 1:150**

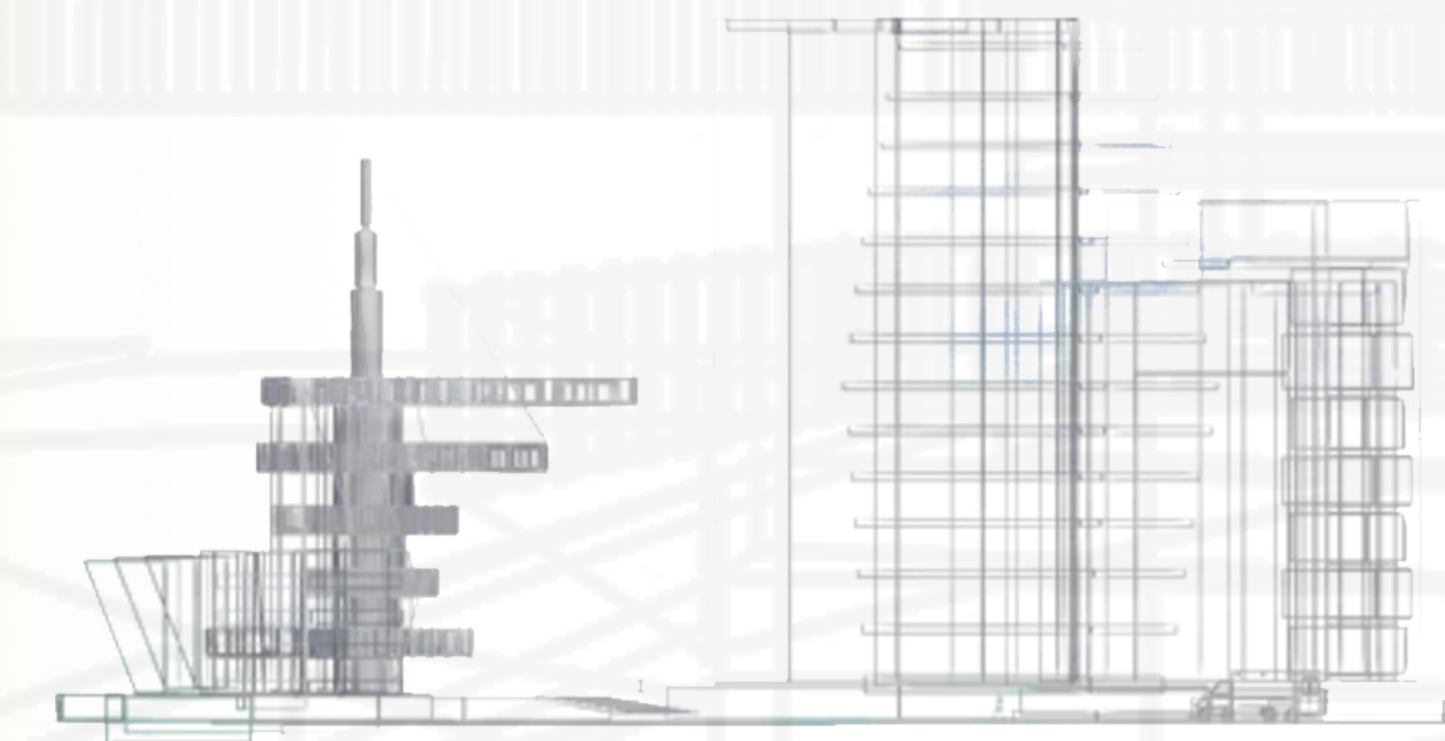


The elevation below shows how Aqua sits within the site, rejecting the rest of the buildings and embracing the canal. Elements such as the vehicle, people and trees show its massive scale.

NORTH ELEVATION 1:200



WIRE EAST ELEVATION



WIRE SOUTH ELEVATION