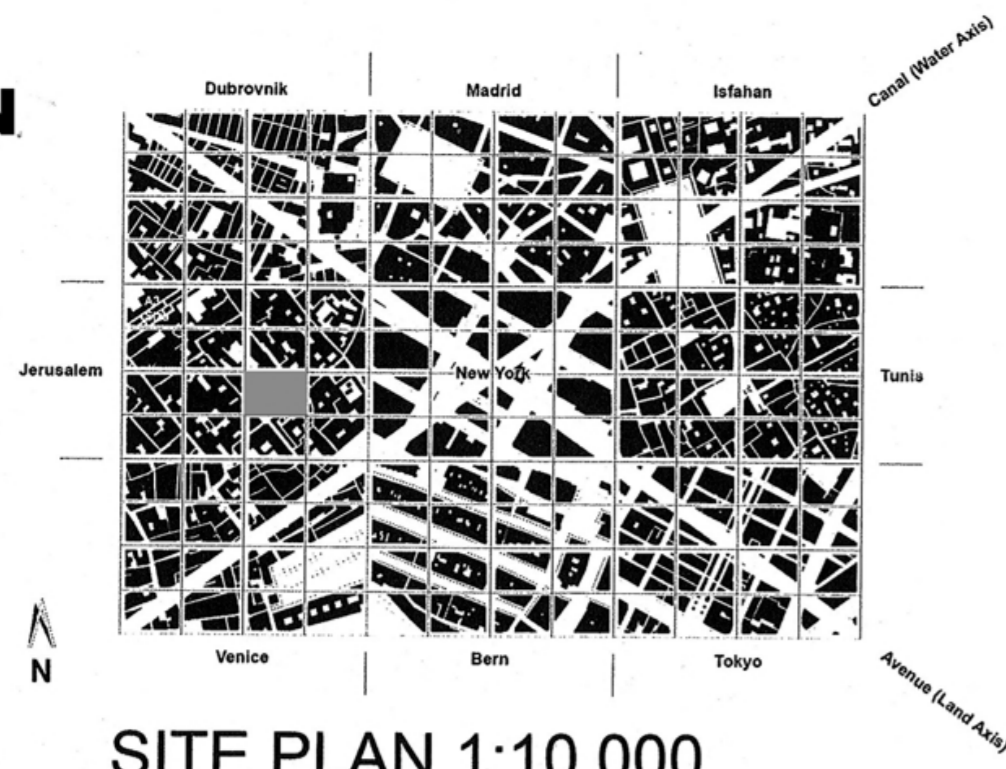
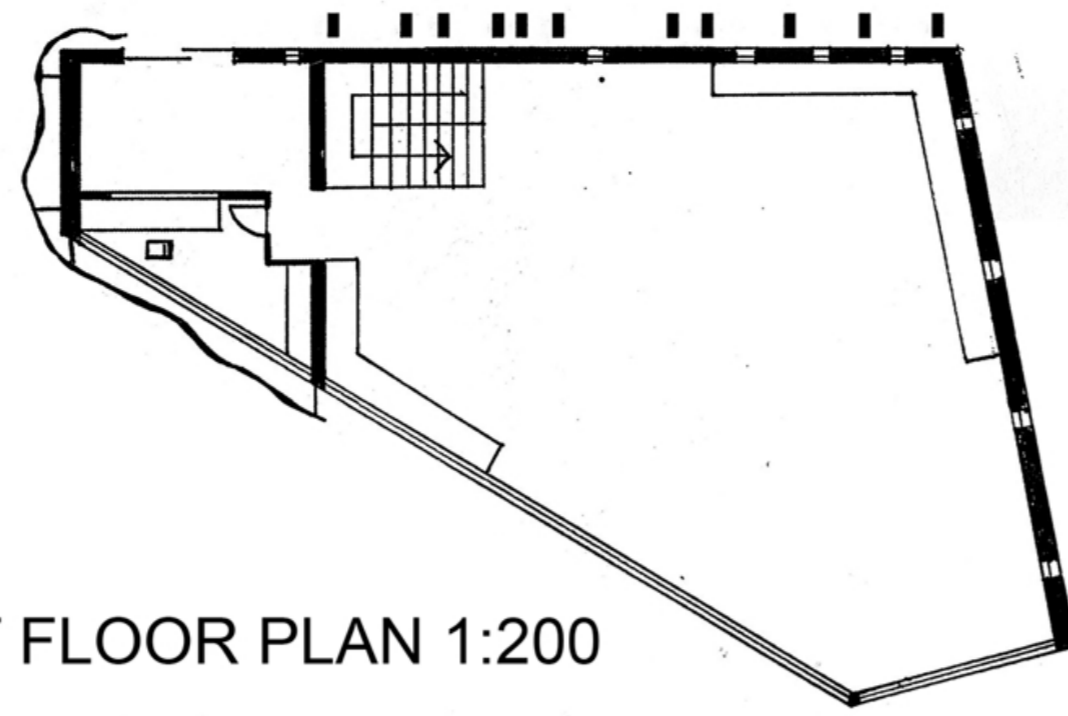


JAIME HOGAN
307191419

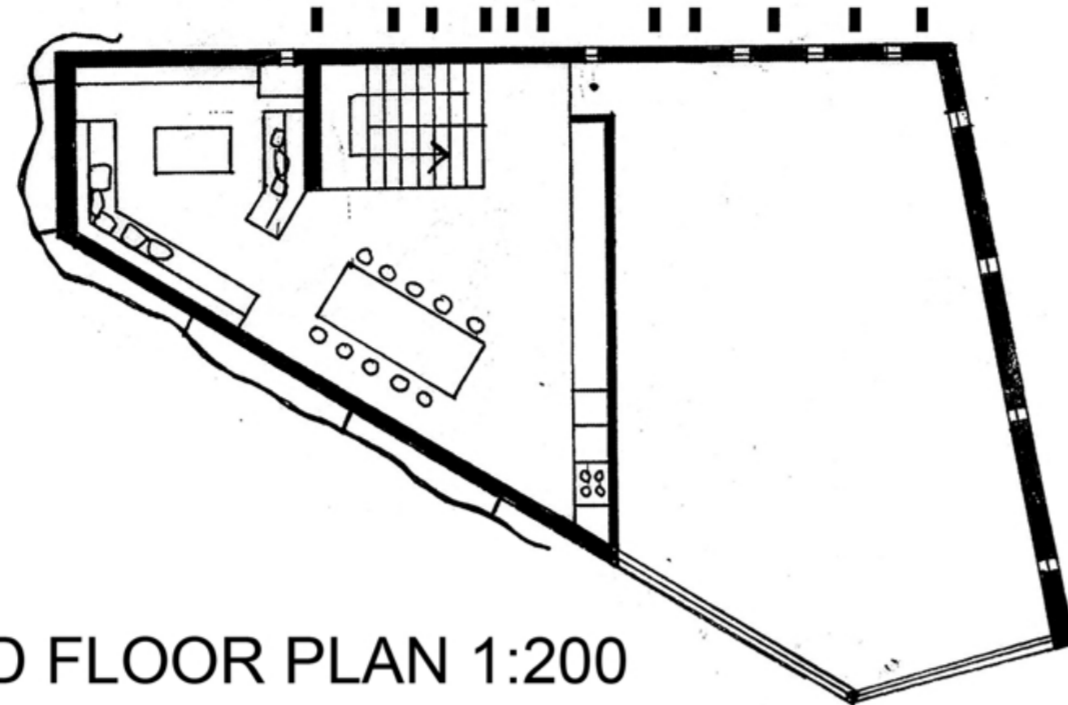
G 3



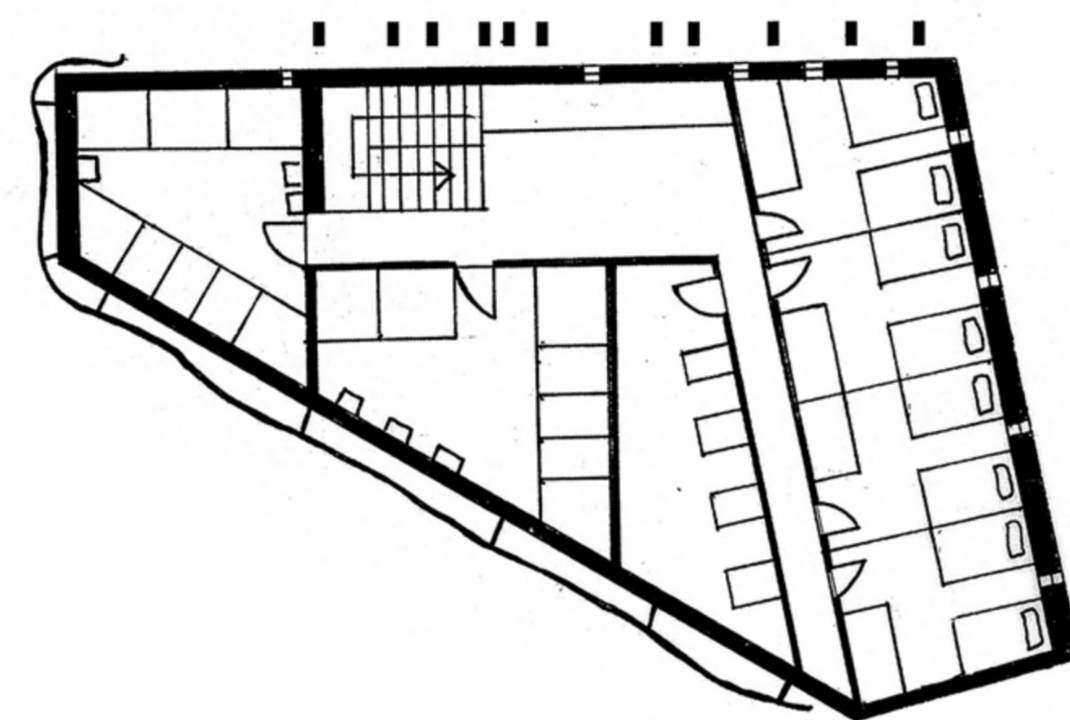
SITE PLAN 1:10 000



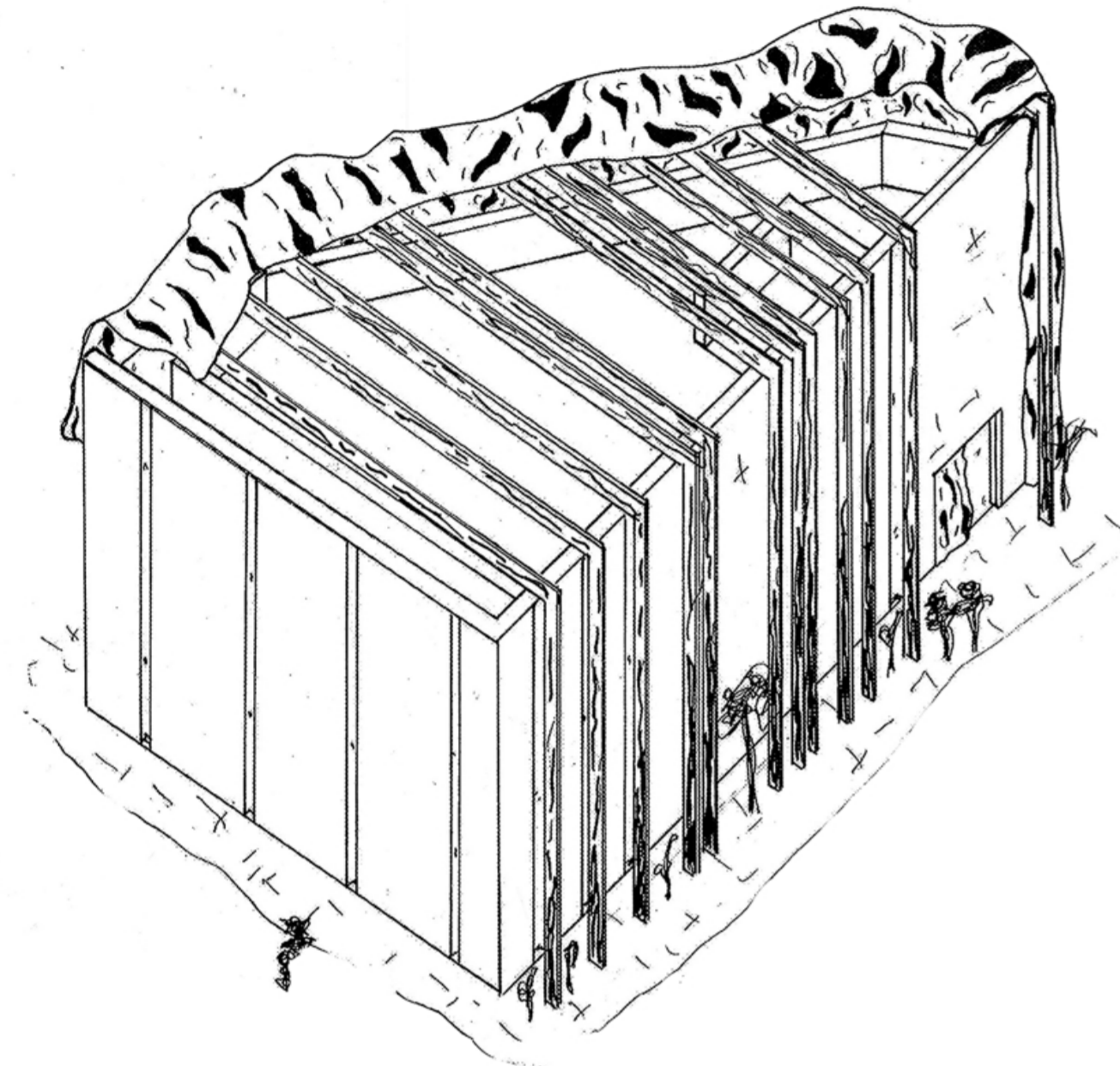
1ST FLOOR PLAN 1:200



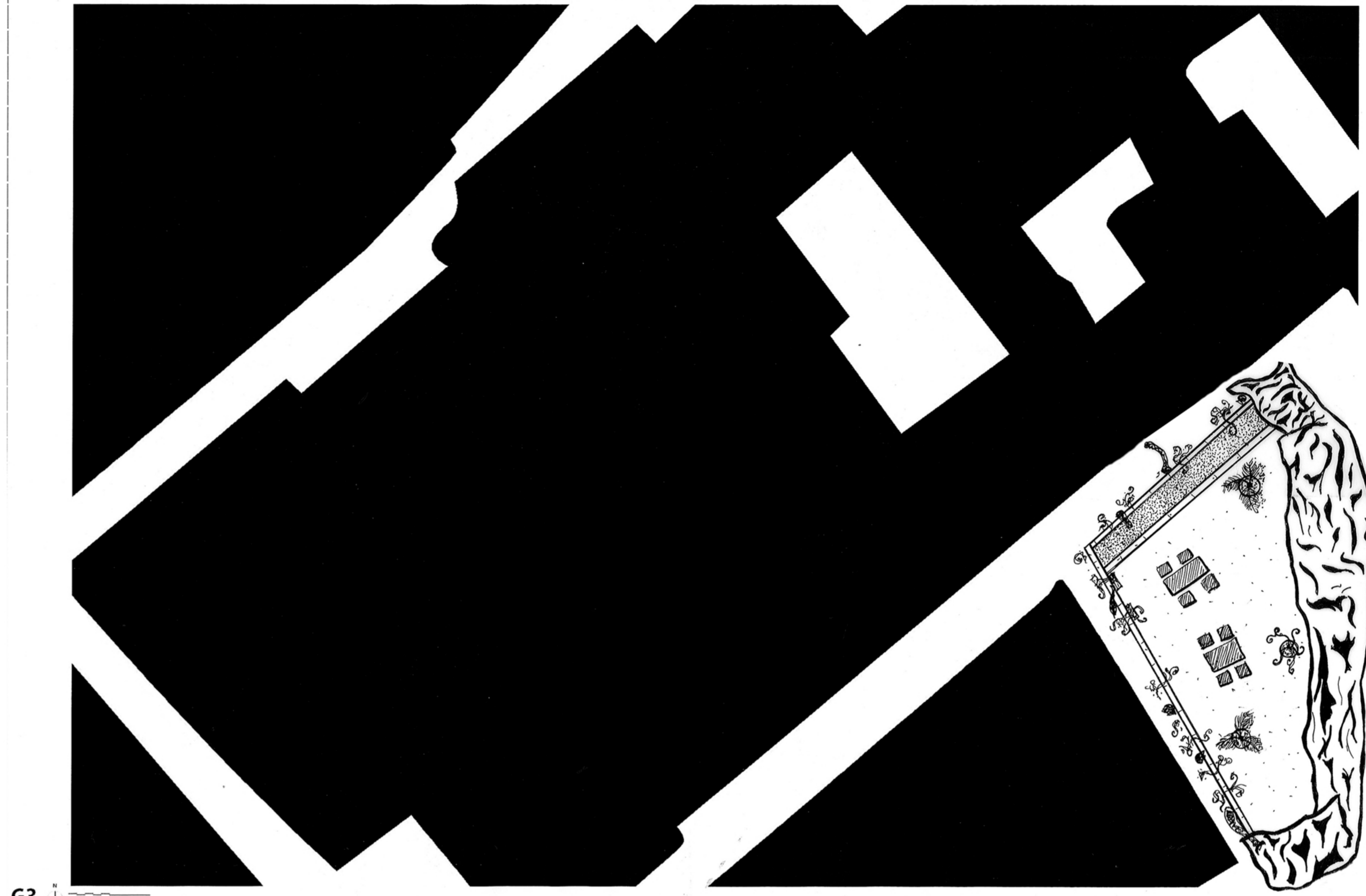
2ND FLOOR PLAN 1:200



3RD FLOOR PLAN 1:200



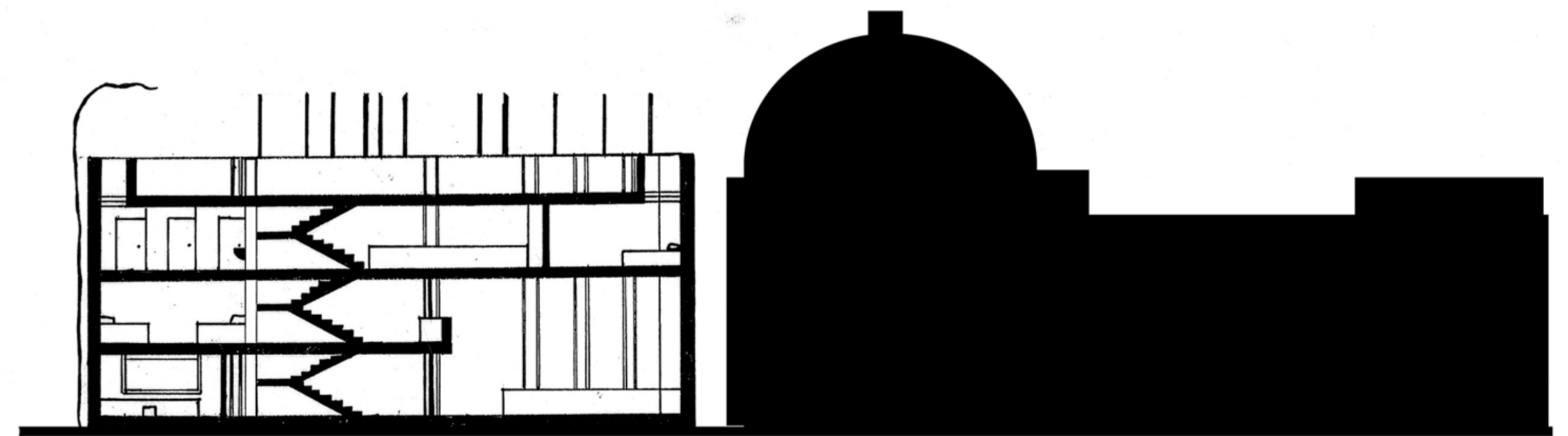
AXONOMETRIC 1:200



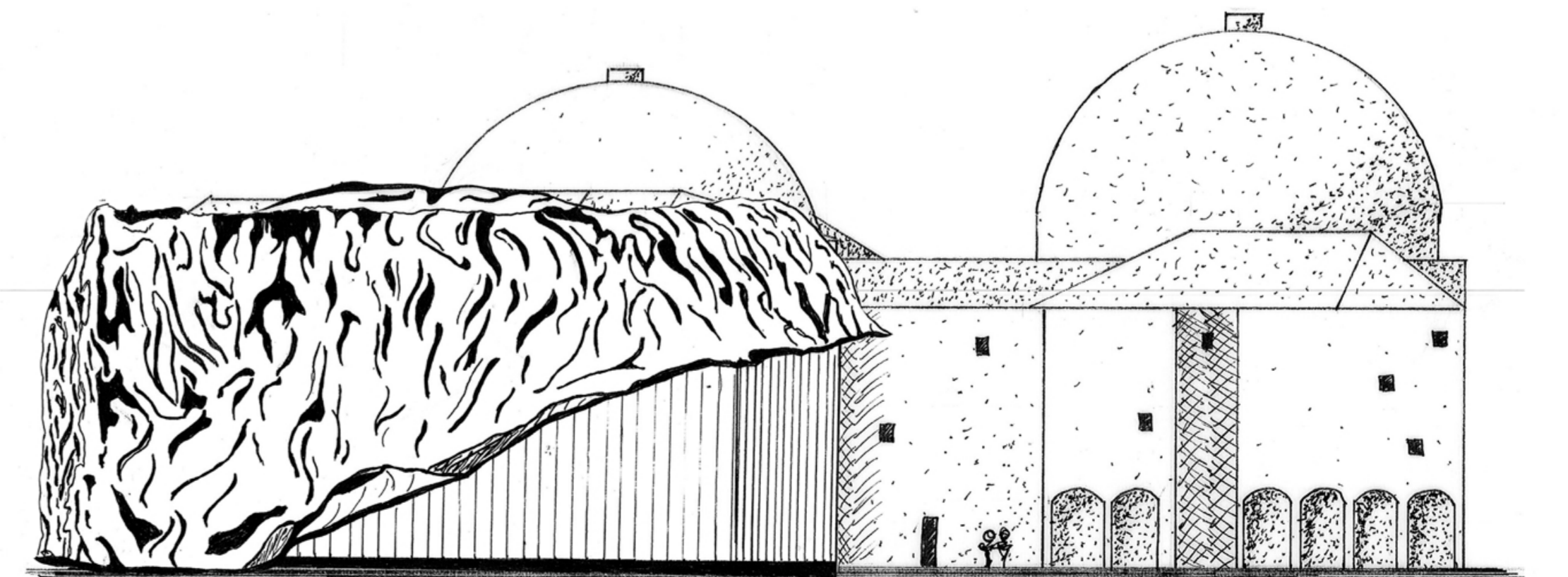
AERIAL PLAN 1:200

Jerusalem Fire Department

Jerusalem's Fire Department houses the men and women who watch over the city, protecting their rich and ancient city and culture. Clad in a gold alloy representing not only its protective nature, but also being reminiscent of flames with changing light, the building stands as a beacon of salvation. The burnt poles act as support, symbolic of the strength that can develop from destruction.



SECTION 1:200



ELEVATION 1:200

