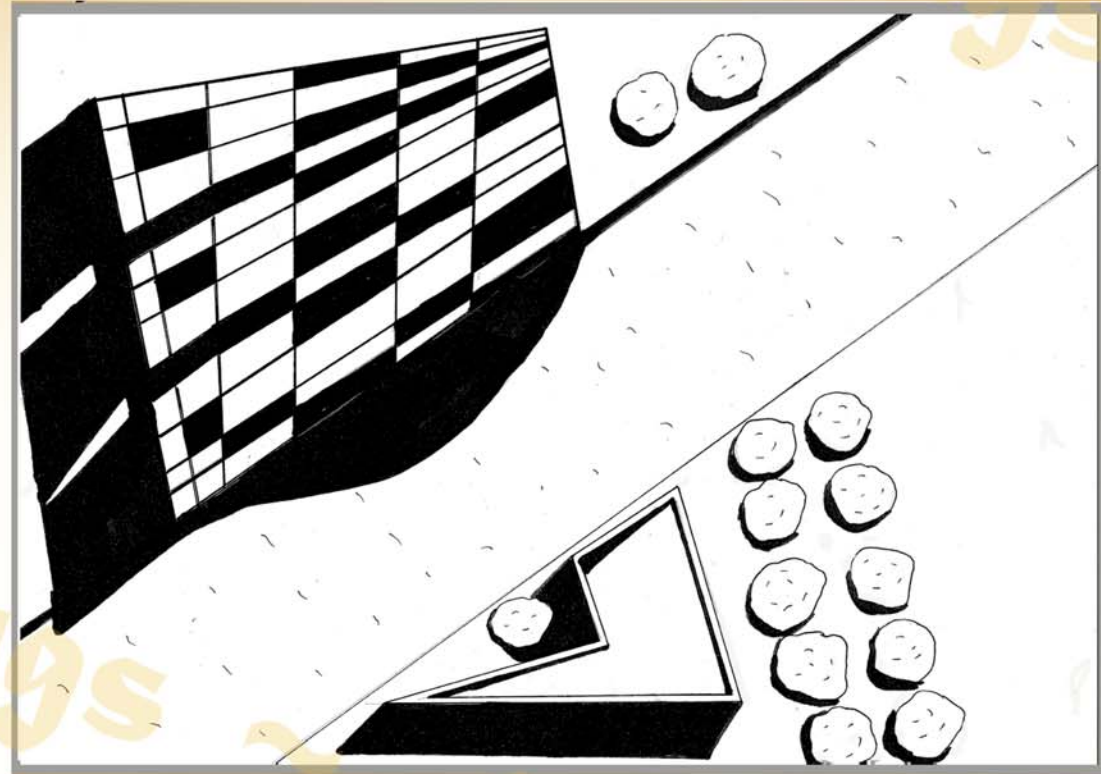


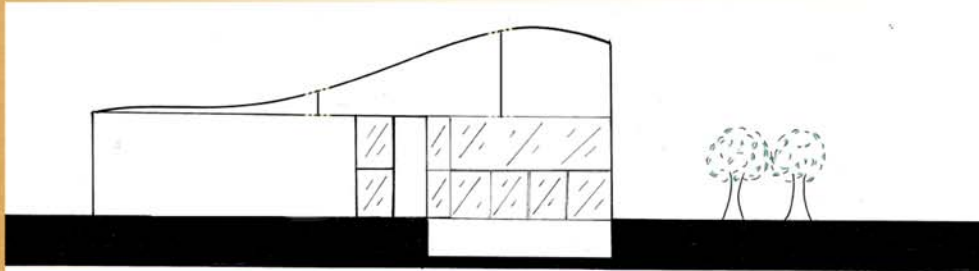
The City of Isfahan mesmerised me from the start. The mosaic domes and decorated arches of the mosques, the way of life surrounded by religion and history. Culture was a dominant feature that separates this city from many others. The beautiful array of Islamic architecture dominated the skyline with details like nothing else. I fell in love with this city and all that it comes with. I instantly wanted to learn about varying aspects of the Islamic way of life.

From the start of this semester I knew that I wanted to develop a building of cultural importance to the city, although with an interesting twist, so that I could learn about something I previously never knew about. Rugs are central to Islamic and Middle Eastern life throughout history. Today they continue to play an important role. I chose to develop a rug warehouse to learn about this detailed art form.

The building I designed was made to echo rugs and the process they got through. From the roof, detailed to look like a large loom, with louvers to cool the rooms. The arch allows export and import boats into the buildings dock area, but also represents the unrolling of a carpet. The distinct process of carpet weaving means that the floorplan was easily divided for me. I wanted to keep each step separate, creating the shape I have developed. The diagram shows the process each rug will undergo.



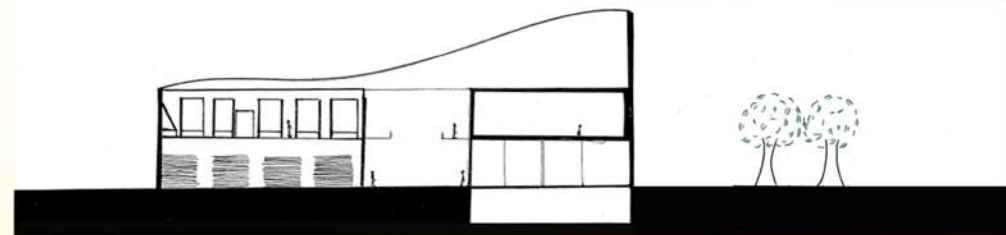
Site plan with aerial view of building 1:200



Elevation 1:200



Short Section 1:200



Long Section 1:200