

The University of Sydney

Copyright in relation to this thesis*

Under the Copyright Act 1968 (several provision of which are referred to below), this thesis must be used only under the normal conditions of scholarly fair dealing for the purposes of research, criticism or review. In particular no results or conclusions should be extracted from it, nor should it be copied or closely paraphrased in whole or in part without the written consent of the author. Proper written acknowledgement should be made for any assistance obtained from this thesis.

Under Section 35(2) of the Copyright Act 1968 'the author of a literary, dramatic, musical or artistic work is the owner of any copyright subsisting in the work'. By virtue of Section 32(1) copyright 'subsists in an original literary, dramatic, musical or artistic work that is unpublished' and of which the author was an Australian citizen, an Australian protected person or a person resident in Australia.

The Act, by Section 36(1) provides: 'Subject to this Act, the copyright in a literary, dramatic, musical or artistic work is infringed by a person who, not being the owner of the copyright and without the licence of the owner of the copyright, does in Australia, or authorises the doing in Australia of, any act comprised in the copyright'.

Section 31(1)(a)(i) provides that copyright includes the exclusive right to 'reproduce the work in a material form'. Thus, copyright is infringed by a person who, not being the owner of the copyright, reproduces or authorises the reproduction of a work, or of more than a reasonable part of the work, in a material form, unless the reproduction is a 'fair dealing' with the work 'for the purpose of research or study' as further defined in Sections 40 and 41 of the Act.

Section 51(2) provides that "Where a manuscript, or a copy, of a thesis or other similar literary work that has not been published is kept in a library of a university or other similar institution or in an archives, the copyright in the thesis or other work is not infringed by the making of a copy of the thesis or other work by or on behalf of the officer in charge of the library or archives if the copy is supplied to a person who satisfies an authorized officer of the library or archives that he requires the copy for the purpose of research or study'.

*'Thesis' includes 'treatise', dissertation' and other similar productions.

Elements of the Past

An Environmental History of the Blue Mountains, Australia.

Trevor J. Daly

VOLUME TWO

A thesis submitted in fulfilment
of the requirements for the degree of
Doctor of Philosophy

Department of History

University of Sydney

March 2000

©

TABLE OF CONTENTS - VOLUME TWO

<i>Bibliography</i>	3
<i>Appendix 1</i>	34
<i>Appendix 2</i>	40
<i>Appendix 3</i>	41
<i>Appendix 4</i>	42
<i>Appendix 5</i>	45
<i>Appendix 6</i>	46
<i>Figures</i>	47
<i>Map 1</i>	85

Bibliography

PRIMARY SOURCES

1. Government Publications and Reports

de Burgh, E.M., *The Warragamba River and the Water Supply of the County of Cumberland*, Department of Public Works, Sydney, 1 June 1908, (William Donkins Papers, ML MSS 3302).

Carne, J.E., *The Kerosene Shale Deposits of New South Wales*, Memoirs of the Geological Survey of New South Wales, Geology No.3, Department of Mines and Agriculture, Government Printer, Sydney, 1903.

Carne, J.E., *Geology and Mineral Resources of the Western Coalfield*, Memoirs of the Geological Survey of New South Wales, Geology No.6, Department of Mines and Agriculture, Government Printer, Sydney, 1908.

Coghlan, T.A., *The Wealth and Progress of New South Wales*, George Robertson & Co., Government Printer, Sydney, 1887 (First Issue) and 1902 (Thirteenth Issue).

Foster, J.J., *The Jenolan Caves*, Charles Potter, Government Printer, Sydney, 1890.

Harper, L.F., *The Yerranderie Silver Field*, Mineral Resources No.35, New South Wales Department of Mines, Geological Survey, Government Printer, Sydney, 1930.

Historical Records of New South Wales (HRNSW), Vols. I-VII, Government Printer, Sydney, 1892-1901.

Historical Records of Australia (HRA), Series I, Vols. V, VIII, IX, XV, XXV, Commonwealth Parliamentary Library, Government Printer, Sydney, 1914-1916.

Journal of the NSW Legislative Council, 1861-62, 1866, 1869, 1870, 1891-92, 1894, 1894-95, 1901, 1902, Government Printer, Sydney.

Mitchell, T.L., **Report Upon the Progress Made in Roads and in the Construction of Public Works in New South Wales From the Year 1827 to June 1855**, Government Printer, Sydney, 1856, (ML A331A, Mitchell Library).

NSW Government Gazette - 1859, 1889 (Vol.2), 1893 (Vol.3), Government Printer, Sydney.

NSW Legislative Assembly Votes and Proceedings - 1856-57, 1857, 1858-59, 1859-60, 1865-66, 1871-72, 1872-73, 1875-76, 1876-77, 1878-79, 1879-80, 1892-93, 1900, Government Printer, Sydney.

NSW Legislative Council Votes and Proceedings - 1846, 1852, 1854, Government Printer, Sydney.

NSW Parliamentary Debates - 1879 - 1989 (various volumes)

NSW Parliamentary Papers (Joint Volumes) - 1904 -1988 (various volumes)

The Railway Guide of New South Wales, Thomas Richards, Government Printer, Sydney, 1879.

'Report by Count Streleski', Appendix C, in **Despatch from Sir George Gipps to Secretary of State for the Colonies**, 28 September 1840, published by the House of Commons, (MLQ308 PA5, Mitchell Library).

Trickett, O., **Guide to the Jenolan Caves, New South Wales**, W.A. Gullick Government Printer, Sydney, 2nd Ed., 1905.

2. Manuscripts and Archival Sources

Archives Office NSW, **Colonial Secretary Papers - Letters Received**, 1815, (Reels 6038, 6065), Sydney.

Archives Office NSW, **Surveyors Monthly Reports**, 1832, 1833, Sydney.

Blue Mountains City Library, **Listed Archives**, Box 12, Springwood.

Blue Mountains City Library, **Local Studies Files A-Z**, Springwood.

Du Faur, E., **Notebook 1875-1877**, ML A1629, Mitchell Library, Sydney.

Lowne, B.T., **Journal 1862-1863**, ML MSS. 2536, Mitchell Library, Sydney.

Morley, H.B., **Reminiscences of Mt. Irvine**, 1950, ML MSS. 3023, Mitchell Library, Sydney.

Morley, M.H., **My Life on Mt. Irvine**, 1969, Blue Mountains Historical Society, Wentworth Falls.

Newspaper Clippings, Vol.46, Vol.77, ML Q981/N, Mitchell Library, Sydney.

Wildlife Preservation Society of Australia, **Minutes**, ML MSS. 2499, ML MSS. 5603, Mitchell Library, Sydney.

Yeaman, J., **Papers**, ML MSS. 3112, Mitchell Library, Sydney.

3. Newspapers and Periodicals

Blue Mountains Newspapers

Blue Mountains Advertiser - 1940-1949, 1951-1954

Blue Mountains Courier - 1955, 1957-1959

Blue Mountains Daily - 1939

Blue Mountain Echo - 1909-1928

Blue Mountains Echo - 1939

Blue Mountain Gazette - 1903-1904

Blue Mountains Gazette - 1976, 1979, 1980, 1982, 1985, 1988-1990

Blue Mountain Star - 1929-1930

Blue Mountains Times - 1936-1937

Katoomba Daily - 1920, 1933-1939

Katoomba Times - 1889-1894

The Mountaineer - 1894, 1895, 1899-1905

Others

Argus - 1879

Australian - 1988

Australian Town and Country Journal - 1870, 1871, 1878, 1879, 1880, 1882, 1884, 1886, 1893, 1898, 1908

Bathurst Free Press - 1859

Bathurst Advocate - 1848

Bush Fire Bulletin - 1958, 1960-1965, 1968, 1970, 1976-1980, 1983, 1984

Camden News - 1895

Cumberland Mercury - 1875

Daily Telegraph - 1918, 1927, 1935

Hawkesbury Herald - 1904

Illustrated Sydney News - 1889, 1890

The Lancet - 1873

Main Roads - 1939, 1950, 1958

Nepean Times - 1884, 1886, 1888, 1889

Sydney Gazette - 1803, 1804, 1808, 1815, 1823, 1825

Sydney Mail - 1867, 1868, 1869, 1878, 1890, 1896, 1909, 1910, 1911

Sydney Morning Herald - Various issues between 1850 and 1987

Sydney Water Board Journal - 1953, 1958, 1959, 1968.

Sun-Herald - 1959, 1960

4. Books and Articles

Anon., **Prospectus of Grose Valley Development Syndicate Ltd**, Sydney, 1926.

Anon., **A Mountain Souvenir of the Blue Mountains, NSW, Australia**, McCarron, Stewart & Co. and Hans Herzog & Co., Sydney, 1903.

Allan, A., 'Health-Giving Climate', in **The Blue Mountains: Australia's Premier Tourist Resorts**, Lady Publishing Co., Melbourne, 1938, pp.33-34.

Allen, C.H., **A Visit to Queensland and her Goldfields**, Chapman and Hall, London, 1870.

Atkinson, L., **A Voice From the Country**, Mulini Press, Canberra, 1978.

Barrallier, F., 'Journal of the Expedition, undertaken by order of His Excellency Governor King, into the interior of New South Wales', 1802 in ***Historical Records of New South Wales***, Vol.V, Appendix A, NSW Government Printer, 1897, pp.749-825.

Bell, A., 'Diary, 1823', Bell Family Papers (ML1706), reprinted in R. Else-Mitchell, 'The Discovery of Bell's Line, 1823: A Note and a Document', ***Journal of the Royal Australian Historical Society***, Vol.66, Part 2, 1980, pp.92-95.

Bellingham, S.R., ***Ten Years With the Palette, Shotgun & Rifle on the Blue Mountains, N.S.W.***, P. Offer, Sydney, 1899.

Bellingham, S.R., 'Wallaroo Stalking on the Blue Mountains, New South Wales', ***The Australian Shooting & Fishing Annual***, 1902, pp.13-18.

Bennett, G., ***Wanderings in New South Wales, Batavia, Pedir Coast, Singapore, and China, being the Journal of a Naturalist in those Countries during 1832, 1833 and 1834***, Vol.I, Richard Bentley, London, 1834, (Australiana Facsimile Editions, No.115, Libraries Board of South Australia, Adelaide, 1967).

Blackheath Progress Committee, ***Blackheath, Blue Mountains, N.S.W.***, Marchant & Co., Sydney, 1903.

The Blue Mountain Guide, Batty & Chalcraft, Sydney, 1887, (National Library, Canberra).

The Blue Mountains Encyclopedia: Where to Stay and What to See, Blue Mountains Local Government Tourist Agency, Sydney, 1926-7.

Breton, H.W., ***Excursions in New South Wales, Western Australia, and Van Diemens' Land, During the Years 1830, 1831, 1832 and 1833***, Richard Bentley, London, 1833.

Bruck, L. (ed.), ***Guide to the Health Resorts in Australia, Tasmania, and New Zealand***, Australasian Medical Gazette Office, Sydney, 1888.

Burraborang Valley Defence League, ***Our Case Against Damming the Burraborang Valley to Supply Sydney with Water***, Camden Advertiser Printing Service, 1941.

Caley, G., 'An Account of the Journey to Mount Banks in Nov: 1804', in A.E.J. Andrews (ed.), ***The Devil's Wilderness: George Caley's Journey to Mount Banks 1804***, Blubber Head Press, Hobart, 1984.

Collins, D., ***An Account of the English Colony in New South Wales, etc.***, Vols. I and II, T. Cadell Jun. And W. Davies, London, 1798 and 1802, (Australiana Facsimile Editions No.76, Libraries Board of South Australia, Adelaide, 1971).

Cook, S., ***The Jenolan Caves: An Excursion in Australian Wonderland***, Eyre & Spottiswoode, London, 1889.

Cunningham, A., 'Journey Over the Western or Blue Mountains, Parramatta to Bathurst 3-19 April, 1817', and 'Bathurst - Return to Parramatta, August 30 - September 8, 1817', in Lee, I., ***Early Explorers in Australia***, Methuen & Co., London, 1925.

Dana, J.D., 'On the Degradation of the Rocks of New South Wales and Formation of Valleys', ***The American Journal of Science and Arts***, Vol. IX, 1850, pp.289-294.

Darwin, C., ***Journal of Researches into the Geology and Natural History of the Various Countries Visited by HMS Beagle etc.***, Henry Colburn, London, 1839.

Darwin, C., ***Geological Observations on the Volcanic Islands Visited During the Voyage of HMS Beagle: Together with Some Brief Notices on the Geology of Australia and the Cape of Good Hope***, Smith & Elder, London, 1844.

De Strzelecki, P.E., ***Physical Description of New South Wales and Van Diemen's Land***, Longman, Brown, Green and Longmans, London, 1845.

Douglass, J., ***Old Katoomba: Peeps Into the Past***, Blue Mountains City Library, Springwood, n.d. (ca. 1930s).

Edgeworth David, T.W., 'Summary of our Present Knowledge of the Structure and Origin of the Blue Mountains of New South Wales', in 'Anniversary Address', ***Journal and Proceedings of the Royal Society of New South Wales***, Vol.30, 1896, pp.33-69.

Edgeworth David, T.W., 'An Important Geological Fault at Kurrajong Heights', *Journal and Proceedings of the Royal Society of New South Wales*, Vol.36, 1902, pp.359-370.

Everingham, M., 'Letterbook', 1795, in Ross, V. (ed.), *The Everingham Letterbook: Letters of a First Fleet Convict*, Anvil Press, Sydney, 1985.

Govett, W.R., *Sketches of New South Wales (1836-1837)*, Gaston Renard, Melbourne, 1977.

Guillemard, A.G., *Over Land and Sea: A Log of Travel Round the World in 1873-1874*, Tinsley Brothers, London, 1875.

Hawkins, E., *A Lady's Letter* (Elizabeth Hawkins to Ann Bowling, 7 May, 1822), Parramatta and District Historical Society, 1963.

Henning, R., *The Letters of Rachel Henning*, Angus & Robertson, Sydney, 1963.

Horrocks, J.J., *Horrocks's Handy Guide to the Blue Mountains and Caves of New South Wales*, The Author, Sydney, 1888.

Hunter, J., *An Historical Journal of the Transactions at Port Jackson and Norfolk Island, with the Discoveries which have been made in New South Wales and in the Southern Ocean since the publication of Phillip's Voyage etc.*, John Stockdale, London, 1793, (Australiana Facsimile Editions No.148, Libraries Board of South Australia, Adelaide, 1968).

Inglis, J., *Our Australian Cousins*, Macmillan and Co., London, 1880.

Jamison, J., 'Journal of the First Excursion up the Warragamba', in *The New South Wales Magazine*, Vol.II, No.VI, Jan. 1834, pp.53-61, 111-117.

Katoomba Water Works: Souvenir of the Opening, Mountaineer Printing Office, Katoomba, 1907 (Blue Mountains City Library, Springwood)

Lang, J.D., *An Historical and Statistical Account of New South Wales from the Founding of the Colony in 1788 to the Present Day*, 4th ed. Vol.II, Samson Low, Marston, Low & Searle, London, 1875.

Leigh, W.S., 'On the Artificial Method of Lighting the Jenolan Caves', **Records of the Geological Survey of New South Wales**, Vol.4, Part 2, 1894, pp.66-67.

Macquarie, L., **Journals of his Tours in New South Wales and Van Diemen's Land 1810-1822**, Public Library of NSW, Sydney, 1956.

MacMillan, R., **Australian Gossip and Story**, William Brooks & Co., Sydney, 1895.

Mann, F.C.T., 'Through the Jenolan Caves of New South Wales, Australia', **The Westminster Review**, September 1894, pp.426-434.

Mann, D.D., **The Present Picture of New South Wales, etc. etc.**, John Booth, London, 1811. (Reprinted by John Ferguson, Sydney, 1979).

Maori, 'The Fish River Caves', **The Australian: A Monthly Magazine**, Vol.5, 1880-81, pp.160-172.

Mathews, R.H. and Everitt, M.M., 'The Organisation, Language and Initiation Ceremonies of the Aborigines of the South-East Coast of N.S. Wales', **Journal and Proceedings of the Royal Society of New South Wales**, Vol.34, 1900, pp.262-281.

Mathews, R.H., 'Ethnological Notes on the Aboriginal Tribes of New South Wales and Victoria', **Journal and Proceedings of the Royal Society of New South Wales**, Vol.38, 1904, pp.203-381.

Mathews, R.H., 'Some Mythology of the Gundungurra Tribe, New South Wales', **Zeitschrift fur Ethnologie**, Vol.40, 1908, pp.203-206.

Meredith, L.A., **Notes and Sketches of New South Wales during a Residence, 1839-44**, John Murray, London, 1844.

Michael-Podmore, St., **Rambles and Adventures in Australasia, Canada, India, etc.**, L. Upcott Gill, London, 1909.

Morris, E.E., (ed.) **Cassell's Picturesque Australasia**, Cassell & Co., London, 1889 (Facsimile, **Australia's First Century 1788-1888**, Child & Henry, Sydney, 1978).

Mount Victoria & Little Hartley Progress Committee, ***The Tourists' Guide to the Blue Mountains***, Walter Akhurst & Co., Sydney, 1887, (National Library, Canberra).

The Mountaineer: Illustrated Tourists' Guide to the Blue Mountains and Jenolan Caves, Wilson's Publishing Co., Sydney, n.d. (ca.1930s).

Mundy, G.C., ***Our Antipodes: or Residence and Rambles in the Australian Colonies, with a Glimpse of the Gold Fields***, Vol.1, Richard Bentley, London, 1852.

Musgrave, A., 'A Naturalist on the Nepean River', ***Australian Museum Magazine***, Vol.2, No.5, 1925, pp.209-216.

New South Wales Calendar and General Post Office Directory 1832, Stephen and Stokes, Sydney, 1832 (Facsimile Edition, Public Library of NSW, Sydney, 1966).

Official Tourist Guide to Katoomba & Leura, Katoomba Municipality, John Sands Ltd., Sydney, n.d. (ca. 1912-13).

Peron, F.M., ***A Voyage of Discovery to the Southern Hemisphere, etc.***, Richard Phillips, London, 1809.

Phillips, H., ***The Blue Mountains and Jenolan Caves Illustrated Tourist Guide***, H. Phillips, Katoomba, n.d. (ca.1915).

Russell, H.C., 'Some Results of an Astronomical Experiment on the Blue Mountains', ***Journal and Proceedings of the Royal Society of NSW***, Vol.12, 1878, pp.117-125.

Russell, J.E.M., ***The Pictorial Guide to the Blue Mountains of New South Wales, and to the Districts between Parramatta and Bathurst Including Jenolan Caves***, Gibbs, Shallard & Co., Sydney, 1885, (National Library, Canberra).

Russell, W. (Werriberry), ***My Recollections***, Camden News Office, 1914.

Sail, C.R., ***Farthest East, and South and West etc.***, W.H. Allen & Co., London, 1892.

Streeton, A., Letters 1891, in R.H. Croll (ed.), ***Smike to Bulldog: Letters from Sir Arthur Streeton to Tom Roberts***, Ure Smith, Sydney, 1946.

- Suttor, W.H., *Australian Stories Retold and Sketches of Country Life*, Glyndwir Whalan, Bathurst, 1887.
- Tench, W., 'A Complete Account of the Settlement at Port Jackson', 1793, in *Sydney's First Four Years*, Angus & Robertson, Sydney, 1961.
- Tenison-Woods, J.E., 'The Hawkesbury Sandstone', *Journal and Proceedings of the Royal Society of New South Wales*, Vol.16, 1882, pp.53-90.
- Trebeck, P.N., 'Mount Wilson and its Ferns', *Proceedings of the Linnean Society of New South Wales*, Vol.1, Part 2, 1886, pp.491-496.
- Trotter, C., 'Impressions of Australia: With an Account of the Fish River Caves', in *Blackwood's Edinburgh Magazine*, Vol.144 (No.873), July 1888, pp.93-115.
- The Tourists' Guide to the Blue Mountains*, Alfred Colless, Penrith, 1887.
- Verschuur, G., *At the Antipodes*, Low Marston, London, 1891.
- Walker, F., *Official History of the First Crossing of the Blue Mountains in 1813*, W.E. Smith, Sydney, 1914.
- Ward, T., *Rambles of an Australian Naturalist*, John Murray, London, 1907.
- Warliker, H., *A Mount Wilson Childhood*, The Author, Killcare, 1990.
- Wells, W.H., *A Geographical Dictionary or Gazetteer of the Australian Colonies etc.*, W. & F. Ford, Sydney, 1848.
- Williamson, E.A., *The Valley of the Grose: Area of Great Potential Wealth*, Mount Victoria, n.d. (ca. 1925).
- Woolfs, W., 'A Glance at the Flora of Mount Wilson', *Proceedings of the Linnean Society of NSW*, Vol.2, Part 1, 1887, pp.6-12.
- Woore, T., *Supply of Water from the Warragamba River etc.*, F. White, Sydney, 1876.

SECONDARY SOURCES

1. **Books**

Anon., *Jenolan Caves (NSW): Nature's Masterpiece*, Gregory Publishing Co., Sydney, n.d. (ca. 1950).

Aird, W.V., *The Water Supply, Sewerage and Drainage of Sydney*, MWSDB, Sydney, 1961.

Andrews, A.E.J., *Major Mitchell's Map 1834: The Saga of the Survey of the Nineteen Counties*, Blubber Head Press, Hobart, 1992.

Baker, M., and Corringham, R., *Birds of the Blue Mountains*, Three Sisters Publications, Winmalee, 1988.

Baker, M., and Corringham, R., *Native Plants of the Blue Mountains*, Three Sisters Publications, Winmalee, 1995.

Barrett, J., *Kowmung River: Discovery, History and Development*, The Author, Glenbrook, 1993.

Barrett, J., *Narrow Neck and the Birth of Katoomba*, The Author, Glenbrook, 1996.

Bayley, W.A., *Lapstone Zig Zag Railway: Blue Mountains - NSW*, Austrail Publications, Bulli, 1972.

Bayley, W.A., *Blue Mountains Railways*, Austrail Publications, Bulli, 1980.

Beadle, N.C.W., Evans, O.D., and Carolin, R.C., *Flora of the Sydney Region*, Reed Books, Sydney, 1994.

Belpin, P. and Burke, D., *Full Steam Across the Mountains*, Methuen Australia, Sydney, 1981.

- Bennett, J.R., ***The Katoomba Coal Mine***, Blue Mountains Historical Society, Katoomba, 1972.
- Bentley, J., ***Black Smoke, Blue Mountains: The Great Zig Zag Railway***, Robert Brown & Associates, Bathurst, 1988.
- Bentley, S.J., ***'Christmas Swamp': A History of Lawson***, Springwood Historical Society, Springwood, 1986.
- Blainey, G., ***Triumph of the Nomads: A History of Ancient Australia***, Sun Books, Melbourne, 1983 (Revised edition).
- Branagan, D., Herbert, C. and Langford-Smith, T., ***An Outline of the Geology and Geomorphology of the Sydney Basin***, Science Press, University of Sydney, 1976.
- British Association for the Advancement of Science, ***Handbook for New South Wales***, Edward Lee & Co., Sydney, 1914.
- Colong Foundation for Wilderness, ***Park or Pines: The Battle for the Boyd***, Sydney, 1989.
- Curran, J.M., ***The Geology of Sydney and the Blue Mountains***, Angus and Robertson, Sydney, 1898.
- Currey, C.H., ***Mount Wilson, New South Wales: Its Location, Settlement and Development***, Angus and Robertson, Sydney, 1968.
- Cunningham, C., ***Blue Mountains Rediscovered: Beyond the Myths of Early Australian Exploration***, Kangaroo Press, Kenthurst, 1996.
- Dunlop, B.T., ***Jenolan Caves, New South Wales, Australia***, NSW Government Tourist Bureau, Sydney, 1950.
- Eardley, G.H. and Stephens, E.M., ***The Shale Railways of New South Wales***, Australian Railway Historical Society (NSW Division), Sydney, 1974.
- Flannery, T.F., ***The Future Eaters: An Ecological History of the Australasian Lands and People***, Reed Books, Sydney, 1994.

Flood, J., ***Archaeology of the Dreamtime: The Story of Prehistoric Australia and its People***, Angus & Robertson, Sydney, 1983 (Revised edition 1995).

Hartig, K., ***Images of the Blue Mountains***, Department of Geography, Research Monograph No.2, University of Sydney, Sydney, 1986.

Horne, J., ***Jenolan Caves: When the Tourists Came***, Kingsclear Books, Sydney, 1994.

Hungerford, M., ***Bilpin, The Apple Country: A Local History***, The Author, Bilpin, 1995.

Isaacs, J., ***Australian Dreaming: 40,000 Years of Aboriginal History***, Lansdowne Press, Sydney, 1980.

King, D.P., ***Soil Landscapes of the Katoomba 1:100 000 Sheet***, Department of Conservation and Land Management, Sydney, 1994.

Kirkpatrick, J., ***A Continent Transformed: Human Impact on the Natural Vegetation of Australia***, Oxford University Press, Melbourne, 1994.

Kohen, J.L., ***The Darug and Their Neighbours: The Traditional Aboriginal Owners of the Sydney Region***, Darug Link/Blacktown and District Historical Society, Blacktown, 1993.

Kohen, J.L., ***Aboriginal Environmental Impacts***, UNSW Press, Sydney, 1995.

Liddle, D., ***Blue Mountains Wilderness***, Megalong Book, Second Back Row Press, Leura, 1987.

Linacre, E. and Hobbs, J.E., ***The Australian Climatic Environment***, John Wiley & Sons, Brisbane, 1987.

Lloyd, C.J., ***Either Drought or Plenty: Water Development and Management in New South Wales***, NSW Department of Water Resources, Parramatta, 1988.

Long, J.A., ***Dinosaurs of Australia and New Zealand: And Other Animals of the Mesozoic Era***, UNSW Press, Sydney, 1998.

Low, J., ***Pictorial Memories: Blue Mountains***, Atrand, Sydney, 1991.

Mackanness, G., (ed.), ***Fourteen Journeys Over the Blue Mountains of New South Wales 1813-1841***, Horwitz-Grahame, Sydney, 1965.

Macqueen, A., ***Back From the Brink: Blue Gum Forest and the Grose Wilderness***, The Author, Springwood, 1997.

Marshall, A.J. (ed.), ***The Great Extermination: A Guide to Anglo-Australian Cupidity, Wickedness & Waste***, Heinemann, Melbourne, 1966.

McLachlan, R., Barrett, D., Domis, J., Welling, N., ***Let's Have Water: A History of the Fish River Water Supply***, NSW Department of Land and Water Conservation, Sydney, 1997.

Meredith, J., ***The Last Kooradgie: Moyengully, Chief Man of the Gundungurra People***, Kangaroo Press, Kenthurst, 1989.

Mosley, G., ***Blue Mountains for World Heritage***, Colong Foundation for Wilderness, Sydney, 1989.

Mosely, G., ***Battle for the Bush: The Blue Mountains, The Australian Alps and the Origins of the Wilderness Movement***, Colong Foundation/Envirobook, Sydney, 1999.

Mount Tomah Society/Royal Botanical Gardens, ***The Mount Tomah Book***, 2nd ed., Sydney, 1987.

O'Reilly, B., ***Green Mountains and Cullenbenbong***, W.R. Smith & Paterson, Brisbane, 1952.

Perry, T.M., ***Australia's First Frontier: The Spread of Settlement in New South Wales 1788-1829***, Melbourne University Press, Melbourne, 1963.

Pickett, J.W. and Alder J.D., *Layers of Time: The Blue Mountains and Their Geology*, NSW Department of Mineral Resources, Sydney, 1997.

Pyne, S.J., *Burning Bush: A Fire History of Australia*, Allen & Unwin, Sydney, 1991.

Richards, J.A., (ed.), *Blaxland - Lawson - Wentworth 1813*, Blubber Head Press, Hobart, 1979.

Rosen, S., *Losing Ground: An Environmental History of the Hawkesbury-Nepean Catchment*, Hale & Iremonger, Sydney, 1995.

Rotary Club of Blackheath, *Historic Blackheath*, Joseph Bennett & Son, Katoomba, 1975-76.

Rotary Club of Katoomba, *Old Leura and Katoomba*, Joseph Bennett & Son, Katoomba, 1982.

Roughley, T.C., *Fish and Fisheries of Australia*, Angus and Robertson, Sydney, 1951.

Salisbury, E., *Weeds and Aliens*, Collins, London, 1961.

Searle, A.E., *Faulconbridge*, Springwood Historical Society, Springwood, 1977.

Searle, A.E., *Historic Woodford and Linden*, Springwood Historical Society, Springwood, 1980.

Shaw, M., *Historic Megalong Valley*, Megalong Progress & Sporting Association, Megalong, 1988.

Smith, B., *European Vision and the South Pacific*, 2nd ed., Oxford University Press, Melbourne, 1985.

Smith, J., *What is Happening to the Blue Mountains?*, Megalong Book, Katoomba, 1981.

- Smith, J., *Aborigines of the Burraborang Valley 1830-1960*, Fast Books, Wild & Wooley, Sydney, 1991.
- Smith, J., *Aboriginal Legends of the Blue Mountains*, Wentworth Falls, 1992.
- Smith, J. and Smith, P., *Fauna of The Blue Mountains*, Kangaroo Press, Sydney, 1990.
- Smolicz, R.A. and Low, J., *Historic Blue Mountains*, Blue Mountains City Council, Katoomba, 1987.
- Speirs, H., *Landscape Art and the Blue Mountains*, Alternative Publishing Cooperative, Sydney, 1981.
- Spriggs, P.W., *Our Blue Mountains Yesterdays*, P.W. Spriggs, Leura, 1962.
- Stanbury, P., (ed.), *The Blue Mountains: Grand Adventure for All*, (2nd ed.) The Macleay Museum and Second Back Row Press, Sydney/Leura, 1988.
- Stockton, E. (ed.), *Blue Mountains Dreaming: The Aboriginal Heritage*, Three Sisters Publications, Winmalee, 1993.
- Suzuki, D., *The Sacred Balance: Rediscovering Our Place in Nature*, Allen & Unwin, Sydney, 1997.
- Taylor, G., *Sydneyside Scenery and How It Came About*, Angus and Robertson, Sydney, 1958.
- Thompson, P. (ed.), *Myles Dunphy: Selected Writings*, Ballagrin, Sydney, 1986.
- Tindale, N.B., *Aboriginal Tribes of Australia*, University of California Press, Berkeley, 1974.
- Vickers-Rich P. and T.H. Rich, *Wildlife of Gondwana*, Reed, Sydney, 1993.
- Water Resources Commission NSW, *The Role of Water in the Development of New South Wales*, Water Resources Commission, Sydney, 1984.

Webb, V.; ***Kurrajong: An Early History***, The Author, Sydney, 1980.

White, J.P. and O'Connell, J.F., ***A Prehistory of Australia, New Guinea and Sahul***, Academic Press, Sydney, 1982.

White, M.E., ***The Greening of Gondwana***, Reed Australia, Sydney, 1986.

Williams, J.E. and Gill, A.M., ***The Impact of Fire Regimes on Native Forests in Eastern New South Wales***, Environmental Heritage Monograph Series No.2, NSW National Parks and Wildlife Service, Hurstville, 1995.

2. Articles, Chapters and Other Publications

Adamson, C.L., 'Construction Materials Resources of the City of the Blue Mountains', ***Technical Reports Department of Mines NSW***, Vol.8, 1960, pp.55-57.

Adamson, D., Selkirk, P.M., and Mitchell, P., 'The Role of Fire and Lyrebirds in the Sandstone Landscape of the Sydney Basin', in Young, R.W. and Nanson, G.C. (eds.), ***Aspects of Australian Sandstone Landscapes***, Australian and New Zealand Geomorphology Group Special Publication No.1, Department of Geography, University of Wollongong, 1983, pp.81-93.

Anderson, C., and Campbell, T.G., 'Burraborang Valley and Beyond', ***Australian Museum Magazine***, Vol.3, No.6, April-June 1928, pp.204-210.

Andrews, A.E.J., 'The Carmarthen Hills and Thereabouts: The First Fifty Years of Mapping the Blue Mountains', ***Journal of the Royal Australian Historical Society***, Vol.69, Part 1, 1983, pp.1-17.

Andrews, E.C., 'Notes on the Geography of the Blue Mountains and Sydney District', ***Proceedings of the Linnean Society of NSW***, Vol.28, Part 4, 1903, pp.786-825.

Atkinson, G., 'Erosion Damage Following Bushfires', ***Journal of Soil Conservation NSW***, Vol.40, No.1, 1984, pp.4-9.

Barnes, C.J., 'The Colong Caves', ***The Australian Museum Magazine***, Vol.3, No.6, April-June 1928, pp.212-216.

Bembrick, C., 'Geology of the Blue Mountains, Western Sydney Basin', in Herbert, C. & Helby, R. (eds.), ***A Guide to the Sydney Basin***, Department of Mineral Resources, Geological Survey of New South Wales, Bulletin No.26, Sydney, 1980, pp.135-161.

Bishop, P., Hunt, P., and Schmidt, P.W., 'Limits to the Age of the Lapstone Monocline, NSW - a Palaeomagnetic Study', ***Journal of the Geological Society of Australia***, Vol.29, 1982, pp.319-326.

Blaxland Volunteer Bushfire Brigade, ***A History of the Blaxland Volunteer Bushfire Brigade***, Blaxland, 1979.

Blue Mountains City Council, ***Electricity Department Annual Report and Review of Activities***, 1961, 1971 (Courtesy of BMCL).

Blue Mountains City Council, ***Town Planning Scheme: East Ward Report, Central Mountains Report, Upper Mountains Report***, 1967, 1968 (Courtesy of BMCL).

Bowdler, S., 'Hunters in the Highlands: Aboriginal Adaptions in the Eastern Australian Uplands', ***Archaeology in Oceania***, Vol.16, No.2, 1981, pp.99-111.

Bowler, J.M., 'Water and Sand: Climate in Ancient Australia', in Mulvaney, D.J. and White, J.P. (eds.), ***Australians: A Historical Library, Australians to 1788***, Fairfax, Syme & Weldon Associates, Sydney, 1987, pp.25-45.

Branagan, D.F., and Pedram, H., 'The Lapstone Structural Complex, New South Wales', ***Australian Journal of Earth Sciences***, Vol.37, 1990, pp.23-36.

Brownscombe, R., 'Barrallier's Blue Mountains Expedition in 1802: Clearing the Matter Up Finally?', ***Journal of the Royal Australian Historical Society***, Vol.78, No.1-2, 1992, pp.5-16.

Bureau of Meteorology, ***Climatic Averages Australia: Meteorological Summary July 1988***, Australian Government Publishing Service, Canberra, 1988.

Cary, G.J. and Morrison, D.A., 'Effects of Fire Frequency on Plant Species Composition of Sandstone Communities in the Sydney Region: Combinations of Inter-Fire Intervals', ***Australian Journal of Ecology***, Vol.20, 1995, pp.418-426.

Catford, A., 'Bushfire: A Pioneer View', *National Parks Journal*, Vol.21, No.4, 1977, pp.10-12.

Catling, P.C., 'Ecological Effects of Prescribed Burning Practices on the Mammals of Southeastern Australia', in Lunney, D. (ed.), *Conservation of Australia's Forest Fauna*, Royal Zoological Society of NSW, Sydney, 1991, pp.353-363.

Catling, P.C. and Newsome, A.E., 'Responses of the Vertebrate Fauna to Fire: An Evolutionary Approach', in Gill, A.M., Groves, R.H. and Noble, I.R., (eds.), *Fire and the Australian Biota*, Australian Academy of Science, Canberra, 1981, pp.271-310.

Chisholm, E.C., 'The Principal Fauna of Katoomba and District, County of Cook, NSW', *Australian Zoologist*, Vol.3, Part 5, 1923, pp.206-214.

Christensen, P., Recher, H. and Hoare, J., 'Responses of Open Forests (Dry Sclerophyll Forests) to Fire Regimes', in Gill, A.M., Groves, R.H. and Noble, I.R., (eds.), *Fire and the Australian Biota*, Australian Academy of Science, Canberra, 1981, pp.367-393.

Christensen, P.E. and Burrows, N.D., 'Fire: An Old Tool With a New Use', in Groves, R.H. and Burdon J.J., *Ecology of Biological Invasions*, Cambridge University Press, Cambridge, 1986, pp.97-105

Clark, R.L., 'Pollen and Charcoal Evidence for the Effects of Aboriginal Burning on the Vegetation of Australia', *Archaeology in Oceania*, Vol.18, 1983, pp.32-37.

Clark, S.S. and McLoughlin, C., 'Historical and Biological Evidence for Fire Regimes in the Sydney Region Prior to the Arrival of Europeans: Implications for Future Bushland Management', *Australian Geographer*, Vol.17, No.2, 1986, pp.101-112.

Cohen, D.D., Martin, J.W., Bailey, G.M., Crisp, P.T., Bryant E., Rothwell, R., Banks, J. and Hyde R., 'A Twelve-Month Survey of Lead in Fine Airborne Particles in the Major Population Areas of New South Wales', *Clean Air*, Vol.28, No.2, 1994, pp.79-88.

Colong Committee, *The Colong Story*, Colong Committee, Sydney, 1985.

Colquhoun, J.R., *Meteorological Aspects of the December 1977 Blue Mountains Bushfires*, Commonwealth Bureau of Meteorology, Meteorological Note 116, 1981.

Craft, F.A., 'Geographical Studies in the Blue Mountain Tableland', **Proceedings of the Linnean Society of New South Wales**, Vol. LVII, Parts I-II, Nos. 239-240, 1932, pp.40-56.

Croft & Associates/Meredith Walker, **Blue Mountains Heritage Study**, Department of Environment & Planning /Blue Mountains City Council, Sydney, 1985.

Croft, M., et al., 'Forest and Woodland Cover in the Central Western Region of New South Wales prior to European Settlement', in Hale, P. and Lamb, D. (eds.), **Conservation Outside Nature Reserves**, Brisbane, 1997, pp.394-406.

Cunningham, C.J., 'Recurring natural fire hazards: a case study of the Blue Mountains, New South Wales, Australia', **Applied Geography**, Vol.4, No.1, 1984, pp.5-27.

Cunningham, C.J., 'Fire History of the Blue Mountains', in Powell, J. (ed.), **The Improvers' Legacy: Environmental Studies of the Hawkesbury**, Deerubbin Press, Berowra Heights, 1998, pp.39-47.

Department of Main Roads (NSW), **Blue Mountains Road Improvement Programme 1984-1989**, Sydney, 1984.

Department of Main Roads (NSW), **Roads 2000: Blue Mountains Region**, Sydney, 1987.

Department of Planning (NSW), **Management Strategy for Newnes Plateau Providing for Winning of its Construction and Industrial Sand Resources**, Sydney, 1990.

Department of Public Works (NSW), **Central and Lower Blue Mountains Water Supply**, Report No.120, Water Supply and Sewerage Branch, Sydney, November 1975.

Department of Public Works (NSW), **Blue Mountains Water Supply**, Supplement to Report No.120, Water Supply Branch, Sydney, September 1977.

Dodson, J., Fullagar, R., and Head, L., 'Dynamics of Environment and People in the Forested Crescents of Temperate Australia', in Dodson, J. (ed.), ***The Naïve Lands: Prehistory and Environmental Change in Australia and the South-west Pacific***, Longman Cheshire, Melbourne, 1992, pp.115-155.

Dunlop, B.T., 'An Historical Sketch of the Jenolan Caves, New South Wales, From Discovery to 1932', ***Helictite***, Vol.5, No.3, 1967, pp.47-61.

Dunphy, M.J., 'The Bushwalking Conservation Movement 1914-1965', ***Parks and Wildlife***, Vol.2, Nos.3-4, Centenary Issue, 1979, pp.54-64.

Edwards, P.H., 'Historical and Cultural Background to the Fire Problem on the Blue Mountains', ***The Living Earth***, Vol.17, No.2-3, 1974, pp.7-9.

Else Mitchell, R., 'The Grose Valley', ***Journal of the Royal Australian Historical Society***, Vol.26, Part 3, 1941, pp.234-262.

Environmental Impact Statement: Proposed Regional Sewerage Scheme for the Upper Blue Mountains, (Prepared for The Water Board), Camp Scott Furphy Pty Ltd and Mitchell McCotter & Associates Pty Ltd, Sydney, 1990.

Flannery, T.F., 'Pleistocene Faunal Loss: Implications of the Aftershock for Australia's Past and Future', ***Archaeology in Oceania***, Vol.25, No.2, 1990, pp.45-67.

Flood, J.M., 'Fire as an Agent of Change: Aboriginal Use of Fire in New South Wales', ***Forest and Timber***, Vol.22, 1986, pp.15-18.

Foley, J.C., ***A Study of Meteorological Conditions Associated with Bush and Grass Fires and Fire Protection Strategy in Australia***, Commonwealth of Australia Bureau of Meteorology, Bulletin no.38, Melbourne, 1947.

Fullagar, R.L.K., Price, D.M. and Head, L.M., 'Early Human Occupation of Northern Australia: Archaeology and Thermoluminescence Dating of Jinmium Rock-shelter, Northern Territory', ***Antiquity***, Vol.70, 1996, pp.751-773.

Gill, A.M., 'Fire and The Australian Flora: A Review', ***Australian Forestry***, Vol.38, No.1, 1975, pp.4-25.

Glasby, P., Selkirk, P.M., Adamson, D., Downing, A.J., and Selkirk, D.R., 'Blue Mountains Ash (*Eucalyptus oreades* R.T. Baker) in the Western Blue Mountains', ***Proceedings of the Linnean Society of NSW***, Vol.110, No.2, 1988, pp.141-158.

Good, R., 'Adaptions of Australian Plants to Fires', in Stanbury, P. (ed.), ***Bushfires: Their Effect on Australian Life and Landscape***, Macleay Museum and University of Sydney, Sydney, 1981, pp.49-59.

Goodwin, R.H., 'Triassic Stratigraphy - Blue Mountains, New South Wales', ***Journal and Proceedings of the Royal Society of New South Wales***, Vol.102, 1969, pp.137-148.

Goldberry, R., ***Geology of the Western Blue Mountains***, Geological Survey of New South Wales, Bulletin No.20, Department of Mines, Sydney, 1969.

Hartig, K., ***Images of the Blue Mountains***, Department of Geography, Research Monograph No.2, University of Sydney, 1987.

Havard, W.L., 'The Romance of Jenolan Caves', ***Journal of the Royal Australian Historical Society***, Vol.20, Part 1, 1934, pp.18-65.

Head, L., 'Prehistoric Aboriginal Impacts on Australian Vegetation: An Assessment of the Evidence', ***Australian Geographer***, Vol.20, No.1, 1989, pp.37-46.

den Hertog, S., ***The Yerranderie Silver Field, Burratorang Valley***, The Oaks Historical Society, Camden, 1988.

den Hertog, S., ***The History of Burratorang Valley From The Records***, The Oaks Historical Society, Camden, 1990.

Higginbotham, E. and Jack, R.I., 'The Asgard Swamp Mine and Kiln Near Mt. Victoria, New South Wales: An Archaeological Report', ***Australian Archaeology***, No.15, 1982, pp.54-66.

Horton, D.R., 'A Review of the Extinction Question: Man, Climate and Megafauna', ***Archaeology and Physical Anthropology in Oceania***, Vol.15, No.2, 1980, pp.86-97.

- Horton, D.R., 'The Burning Question: Aborigines, Fire and Australian Ecosystems', *Mankind*, Vol.13, No.3, 1982, pp.237-251.
- Horton, D.R., 'Red Kangaroos: Last of the Australian Megafauna', in Martin, P.S. and Klein, R.G. (eds.), *Quaternary Extinctions: A Prehistoric Revolution*, University of Arizona Press, 1984, pp.639-680.
- Hughes, P.J., 'The Impact of Bushfires on Soils and Soil Erosion', in Stanbury P. (ed.), *Bushfires: Their Effect on Australian Life and Landscape*, Macleay Museum and University of Sydney, Sydney, 1981, pp.33-37.
- Hughes, P.J. and Sullivan, M.E., 'Aboriginal Burning and Late Holocene Geomorphic Events in Eastern NSW', *Search*, Vol.12, No.8, August 1981, pp.277-278.
- Hughes, P.J. and Sullivan, M.E., 'Aboriginal Landscape', in Russell, J.S. and Isbell, R.F. (eds.), *Australian Soils: The Human Impact*, University of Queensland Press, St. Lucia, 1986, pp.117-133.
- Humphreys, G.S. and Mitchell, P.B., 'A Preliminary Assessment of the Role of Bioturbation and Rainwash on Sandstone Hillslopes in the Sydney Basin', in Young, R.W. and Nanson, G.C. (eds.), *Aspects of Australian Sandstone Landscapes*, Australian and New Zealand Geomorphology Group Special Publication No.1, Department of Geography, University of Wollongong, 1983, pp.66-80.
- Jervis J., 'The Discovery and Settlement of Burragorang Valley', *Journal of the Royal Australian Historical Society*, Vol.20, Part 3, 1934, pp.164-196.
- Jones, H., *Water Quality of Coxs River and Tributaries 1962-1990*, Water Board, Catchment Services, Australian Water Technologies, Report No.92/72, November 1992.
- Jones, J.G., McPhie, J., and Roots, W.D., 'Devonian Volcano at Yerranderie', *Search*, Vol.8, No.7, 1977, pp.242-244.
- Jones, J.G. and Veevers, J.J., 'Mesozoic Origins and Antecedents of Australia's Eastern Highlands', *Journal of the Geological Society of Australia*, Vol.30, 1983, pp.305-322.

- Kaleski, L.G., 'Vegetative Stabilisation of the Katoomba Water Supply Catchment Area', *Journal of the Soil Conservation Service of NSW*, Vol.3, No.1, 1947, pp.50-56.
- Karskens, G., *An Historical and Archaeological Study of Cox's Road and Early Crossings of the Blue Mountains, New South Wales*, Crown Lands Office, Sydney, 1988.
- Keast, A., 'The Evolutionary Biogeography of Australian Birds', in Keast, A., (ed.), *Ecological Biogeography of Australia*, Vol.3, Dr W. Junk Publishers, The Hague, 1981, pp.1587-1629.
- Keith, D.A. and D.H. Benson, 'The Natural Vegetation of the Katoomba 1:100 000 Map Sheet', *Cunninghamia*, Vol.2, No.1, 1988, pp.107-143.
- Kemp, E.M., 'Pre-Quaternary Fire in Australia', in Gill, A.M., Groves, R.H. and Noble, I.R., (eds.), *Fire and the Australian Biota*, Australian Academy of Science, Canberra, 1981, pp.3-21.
- Kershaw, A.P., 'Late Cenozoic Plant Extinctions in Australia' in Martin, P.S. and Klein, R.G. (eds.), *Quaternary Extinctions: A Prehistoric Revolution*, University of Arizona Press, 1984, pp.691-707.
- Kiernan, K., 'The Geomorphology of the Jenolan Caves Area', *Helictite*, Vol.26, No.2, 1988, p.6-21.
- Kohen, J.L., Stockton, E.D., and Williams, M.A.J., 'Shaws Creek KII Rockshelter: A Prehistoric Occupation Site in the Blue Mountains Piedmont, Eastern New South Wales', *Archaeology in Oceania*, Vol.19, 1984, pp.57-73.
- Kohen, J.L., and Downing A.J., 'Aboriginal Use of Plants on the Western Cumberland Plain', *Sydney Basin Naturalist*, No.1, 1992, pp.1-8.
- Lambeck, K. and Stephenson, R., 'The Post-Palaeozoic Uplift History of South-Eastern Australia', *Australian Journal of Earth Sciences*, Vol.33, 1986, pp.253-270.
- Levy, S., 'Death by Fire', *New Scientist*, 1 May 1999, pp.38-42.

Luchetti, A.S., Paridaens, I., and Cargill, A., ***The Oil Shale Industry: Experience in the Western Coalfields of NSW***, Lithgow District Historical Society, Lithgow, 1979.

McCarthy, F.D., 'The Lapstone Creek Excavation: Two Culture Periods Revealed in Eastern New South Wales', ***Records of the Australian Museum***, Vol.22, No.1, June 1948, pp.1-34.

McCarthy, F.D., 'The Archaeology of the Capertee Valley, New South Wales', ***Records of the Australian Museum***, Vol.26, No.6, 1964, pp.197-246.

McElroy, C.T., 'Extractive Industries in the Blue Mountains', ***Technical Reports Department of Mines NSW***, Vol.7, 1959, pp.97-101.

Merriman, J., 'Difficult, rocky, sandy, stoney, flowery: Aboriginal Ecology in the Blue Mountains', in Stockton, E. (ed.), ***Blue Mountains Dreaming: The Aboriginal Heritage***, Three Sisters Publications, Winmalee, 1993, pp.82-110.

Metropolitan Water Sewerage and Drainage Board (NSW), ***Warragamba Development Project***, Sydney, 1948.

Metropolitan Water Sewerage and Drainage Board (NSW), ***Warragamba Dam: Official Opening***, Booklet, Sydney, 14th October 1960.

Metropolitan Water Sewerage and Drainage Board (NSW), ***Blue Mountains Sewerage: Effluent Management and Environment***, Sydney, March 1987.

Metropolitan Water Sewerage and Drainage Board (NSW), ***Blue Mountains Sewage Treatment Plants Receiving Waters Study***, Sydney, April 1987.

Morgan, H.A.M., 'Bell's Line of Road', ***Journal of the Royal Australian Historical Society***, Vol.42, Part 1, 1956, pp.23-48.

Murray, P., 'Extinctions Downunder: A Bestiary of Extinct Australian Late Pleistocene Monotremes and Marsupials', in Martin, P.S. and Klein, R.G. (eds.), ***Quaternary Extinctions: A Prehistoric Revolution***, University of Arizona Press, 1984, pp.600-628.

Nanson, G.C., Young, R.W. and Stockton, E.D., 'Chronology and Palaeoenvironment of the Cranebrook Terrace (near Sydney) containing artefacts more than 40,000 years old', **Archaeology in Oceania**, Vol.22, No.2, 1987, pp.72-78.

National Parks and Wildlife Service (NSW), **Blue Mountains National Park: Draft Plan of Management**, Sydney, 1988.

Nicholson, P.H., 'Fire and the Australian Aborigine - An Enigma', in Gill, A.M., Groves, R.H. and Noble, I.R., (eds.), **Fire and the Australian Biota**, Australian Academy of Science, Canberra, 1981, pp.55-76.

Ollier, C.D., 'Early Landform Evolution', in Jeans, D.N. (ed.), **Australia: A Geography, Volume One: The Natural Environment**, 2nd ed., Sydney University Press, Sydney, 1986, pp.97-116.

Pan-Pacific Science Congress, **Guide-Book to the Excursion to Blue Mountains, Jenolan Caves, and Lithgow**, NSW Government Printer, Sydney, 1923.

Pells, P.J.N., Braybrooke, J.C., Mong, J., and Kotze, G.P., 'Cliff line Collapse Associated With Mining Activities', in Walker, B.F. and Fell, R. (eds.), **Soil Slope Instability and Stabilisation**, Balkema, Rotterdam, 1987, pp.359-385.

Perry, T.M., 'Climate, Caterpillars and Terrain', **Australian Geographer**, Vol.7, No.1, 1957, pp.3-14.

Prineas, P., 'The Story of the Park Proposal', **National Parks Journal**, Vol.20, Special Issue: The Greater Blue Mountains National Park Proposal, 1976-77, pp.9-11.

Proser, I.P., 'The History of Holocene Alluviation in the Southeastern Highlands of Australia', **Search**, Vol.18, No.4, 1987, pp.201-202.

Quilty, A.J., 'The Story of Megalong Valley', **Journal of the Royal Australian Historical Society**, Vol.33, Part 2, 1948, pp.95-110.

Recher, H.F. and Christensen, P.E., 'Fire and the Evolution of the Australian Biota', in Keast, A. (ed.), **Ecological Biogeography of Australia**, Vol.1, 1981, pp.137-162.

Recher, H.F., P.A. Hutchings and S. Rosen, 'The Biota of the Hawkesbury-Nepean Catchment: Reconstruction and Restoration', ***Australian Zoologist***, Vol.29, Nos.1-2, 1993, pp.3-41.

Reid, F.J., 'Chert Incline - Mt. Victoria - N.S.W.', ***Light Railways***, No.63, January, 1979, pp.14-17.

Reynolds, H., 'The Land, The Explorers and The Aborigines', ***Historical Studies***, Vol.19, No.75, 1980, pp.213-226.

Richmond, R., 'Controlled Burning', in Stanbury P. (ed.), ***Bushfires: Their Effect on Australian Life and Landscape***, Macleay Museum and University of Sydney, Sydney, 1981, pp.75-83.

Selkirk, P.M. and Adamson D., 'The Effect of Fire on Sydney Sandstone', in Stanbury P. (ed.), ***Bushfires: Their Effect on Australian Life and Landscape***, Macleay Museum and University of Sydney, Sydney, 1981, pp.25-31.

Singh, G., Kershaw, A.P. and Clark, R., 'Quaternary Vegetation and Fire History in Australia', in Gill, A.M., Groves, R.H. and Noble, I.R., (eds.), ***Fire and the Australian Biota***, Australian Academy of Science, Canberra, 1981, pp.23-54.

Singleton, C.C., 'The Ascents of Lapstone Hill', ***Australian Railway Historical Society Bulletin***, Vol.7 (1956) - No.227, pp.117-131.

Smith, J., 'The Distribution and Conservation Status of a Rare Conifer, *Microstrobos fitzgeraldii* (Podocarpaceae)', ***Cunninghamia***, Vol.1, No.1, 1981, pp.125-128.

Smith, J., ***Walking Track Heritage Study: Draft Historical Report (Blue Mountains)***, NSW National Parks and Wildlife Service, Sydney, 1998.

State Pollution Control Commission (NSW), ***Report and Findings of the Environmental Investigation into the NSW Forestry Commission Proposal for Pine Planting on the Boyd Plateau***, Sydney, April 1975.

State Pollution Control Commission (NSW), ***Report on a Water-Quality Survey of the Grose River***, Sydney, February-March 1977.

Stephen, A.E., 'Numantia', *Journal and Proceedings of the Royal Australian Historical Society*, Vol.31, Part IV, 1945, pp.249-276.

Stockton, E.D., 'An Archaeological Survey of the Blue Mountains', *Mankind*, Vol.7, 1970, pp.295-301.

Stockton, E.D. and Holland, W., 'Cultural Sites and Their Environment in the Blue Mountains', *Archaeology & Physical Anthropology in Oceania*, Vol.9, No.1, April 1974, pp.36-65.

Strom, A.A., 'Impressions of a Developing Conservation Ethic, 1870-1930' and 'Some Events in Nature Conservation Over the Last Forty Years', *Parks and Wildlife*, Vol.2, No.3-4, 1979, pp.45-53, 65-73.

Sullivan, M.E. and Hughes, P.J., 'The Geoarchaeology of the Sydney Basin Sandstones', in Young, R.W. and Nanson, G.C. (eds.), *Aspects of Australian Sandstone Landscapes*, Australian and New Zealand Geomorphology Group Special Publication No.1, Department of Geography, University of Wollongong, 1983, pp.120-126.

Sussmilch, C.A. and Stone, W.G., 'Geology of the Jenolan Caves District', *Journal and Proceedings of the Royal Society of New South Wales*, Vol.49, 1915, pp.332-384.

Sutton, R., 'The Case for Saving Jamison Creek', *Sydney City Monthly*, January 1981, pp.72-77.

Tindale, N.B., 'Archaeological Excavation of Noola Rock Shelter: A Preliminary Report', *Records of the South Australian Museum*, Vol.14, No.1, 1961, pp.193-196.

Tourism Commission (NSW) and Department of Lands (NSW), *Jenolan Caves Reserve: Plan of Management*, Vol.1, Sydney, December 1988.

Van Loon, A.P., *Bushland Fuel Quantities in the Blue Mountains: Litter and Understorey*, Forestry Commission of NSW, Research Note No.33, Sydney, 1977.

Washington, H., 'NSW Case History - Colo Wilderness, A Wilderness Won?', in Mosley, J.G. and Messer, J. (eds.), ***Fighting for Wilderness***, Fontana/ACF, Sydney, 1984, pp.23-44.

Water Board (NSW), ***Hard Rain***, Booklet, Sydney, 1992.

Water Board (NSW), ***Clean Waterways Report: End of the Five Year Special Environmental Levy Period***, Sydney, 30 June 1994.

Weatherley, A.H., and Lake, J.S., 'Introduced Fish Species in Australian Inland Waters', in Weatherley, A.H. (ed.), ***Australian Inland Waters and their Fauna***, ANU Press, Canberra, 1967, pp.217-239.

Weir, E.G., 'Development of a Fire Policy', ***Parks and Wildlife***, Vol.2, No.2, 1978, pp.25-28.

Wellman, P., 'On the Cainozoic Uplift of the Southeastern Australian Highland', ***Journal of the Geological Society of Australia***, Vol.26, 1979, pp.1-9.

Wylie, R.F. and Singleton, C.C., 'The Railway Crossing of the Blue Mountains', ***Australian Railway Historical Society Bulletin***, Vol.8 (1957) - No.236, pp.81-90, No.241, pp.161-172, Vol.9 (1958) - No.245, pp.38-47, No.246, pp.49-54, No.248, pp.85-94, No.252, pp.149-154, No.253, pp.165-178.

Young, R.W., 'The Study of Landform Evolution in the Sydney Region: A Review', ***Australian Geographer***, Vol.14, No.2, 1978, pp.71-93.

Young, R.W. and Nanson, G.C., 'Environmental Concerns in a Sandstone Landscape With Particular Reference to the Sydney Basin, NSW', in Young, R.W., and Nanson, G.C. (eds.), ***Aspects of Australian Sandstone Landscapes***, Australian and New Zealand Geomorphology Group Special Publication No.1, Department of Geography, University of Wollongong, pp.4-10.

Young, R.W. and A.R.M., "Altogether Barren, Peculiarly Romantic": The Sandstone Lands Around Sydney', ***Australian Geographer***, Vol.19, No.1, 1988, pp.9-25.

3. Theses and Unpublished Reports

Australian Water & Wastewater Association (NSW Branch), **Blue Mountains Water Resources**, Regional Conference Papers, Leura, 16-18 March 1979.

Bartley, M.J., **The Contribution of Fire to Variation in Plant Species Composition and Cover in Sclerophyll Shrub Woodland and Low Open Forest in the Blue Mountains, New South Wales**, M.Sc. Thesis, University of NSW, Sydney, 1985.

Blue Mountains City Council, **Report on Improvements to Local Reticulation, Supplementary to Fish River Scheme**, City Engineer's Department, 31 October 1949, (Local Studies, Blue Mountains City Library, Springwood).

Blue Mountains City Council, **Blue Mountains Water Supply**, City Engineer's Report, 31 August 1954, (Local Studies, Blue Mountains City Library, Springwood).

Blue Mountains City Council, **Blue Mountains Water Supply System - Water Augmentation Proposals**, City Engineer's Report, February 1960, (Local Studies, Blue Mountains City Library, Springwood).

Burke, A., **Images of Popular Leisure in the Blue Mountains 1880s-1939**, BA Hons. (Fine Arts) Thesis, University of Sydney, 1981.

Chalson, J.M., **The Late Quaternary Vegetation and Climatic History of the Blue Mountains, NSW, Australia**, Ph.D Thesis, University of NSW, Sydney, 1991.

Edwards, P.H., **Some Effects of Fire on Vegetation in the Blue Mountains, NSW, with Particular Reference to the Effects of Intentional Fire on Shrubs**, B.Litt. (Biology/Botany) Thesis, University of New England, Armidale, 1972.

Harris, D.S., **Report of an Investigation into the Effects of Domestic Sewage Pollution on Blue Gum Swamp Creek, Winmalee**, M.App.Sc. Thesis, University of NSW, Sydney, 1981.

Horne, J., **Favourite Resorts: Aspects of Tourist Travel in Nineteenth Century New South Wales**, Ph.D Thesis, University of NSW, Sydney, 1995.

Hutchings, P.T., ***Fire Frequency in the Blue Mountains and the 1968 and 1977 Wildfires in Retrospect***, unpublished report, August 1978 (Courtesy of Stephen Pyne).

Jackson, S., ***Control of Introduced Plants and Animals, Blue Mountains, Kanangra-Boyd and Wollemi National Parks, Plan of Management Project***, unpublished report of NSW National Parks and Wildlife Service, Blue Mountains District, Blackheath, 1984.

Jelinek, A., ***Fire Management Plan, Blue Mountains and Kanangra-Boyd National Parks***, unpublished report of NSW National Parks and Wildlife Service, Blue Mountains District, Blackheath, 1981.

Johnson, I., ***The Getting of Data: A Case Study from the Recent Industries of Australia***, Ph.D Thesis, Australian National University, Canberra, 1979.

Luke, R.H., ***Final Report on Various Aspects of Property Damage in the Blue Mountains 16th-18th December, 1977***, unpublished report for Blue Mountains Fire Prevention Association, 1979.

MacCulloch, J., ***Creatures of Culture: The Animal Protection and Preservation Movements in Sydney, 1880-1930***, Ph.D Thesis, University of Sydney, Sydney, 1993.

McGlynn, J.E., ***The Warragamba Emergency Scheme 1937-1940***, unpublished report, Metropolitan Water Sewerage and Drainage Board, Sydney, undated (Sydney Water Archives).

Pemble, E.R., ***Red Cave***, unpublished article, Sydney Speleological Society, 1975 (ML DOC 2488, Mitchell Library, Sydney).

Porteous, F., ***Climate and Convention: The Archaeology of Blue Mountain Houses***, BA (Hons.) Thesis, University of New England, Armidale, 1991.

Yeaman, J., ***Historical Notes Relative to Blue Mountains National Park Trust***, December 1977 (Local Studies, Blue Mountains City Library).

APPENDIX 1

RECORDS OF BUSHFIRES IN THE BLUE MOUNTAINS 1800 - 1950

YEAR	MONTH	LOCALITY (If known)	DAMAGE REPORTED	SOURCE (See Bibliography)
1802	December	Southern Blue Mountains		Barrallier p.823
1804	November	Burralow Swamp, Kurrajong Hills		Caley in Andrews, pp.44-48
1814	January	From Wentworth Falls vicinity to Valley Heights		Evans in Mackaness, pp.30-31
1815	November	Springwood vicinity	First soldiers depot burnt down	Colonial Secretary's Papers 4/11/1815 ML Reel 6038 p.152
1823	September	Mt. Tomah vicinity		Bell p.94
1823	November	Mt. Tomah vicinity		Cunningham in Lee p.515
1824	February	Jamison Valley		Lesson in Mackaness p.152
1832	October	Darling's Causeway, Bell		Govett to Mitchell, 13/12/1832, Monthly Report November 1832, AO Reel 3069.
1833	January	Lower Blue Mountains		Breton pp.291-293
1835	September	Lower Blue Mountains		Backhouse in Mackaness p.200
1836	January	Cox's River valley		Darwin in Mackaness p.236
1839	September			Meredith in Mackaness p.243
1841	September	Upper Blue Mountains		Stanger in Mackaness p.260
1846	November	Blackheath vicinity		Mundy p.158
1860s		Lower Grose Valley		Atkinson pp.11,19
1862	September	Mt. Tomah vicinity		Lowne p.648
1875	December	All areas particularly Lower Blue Mountains		Cumberland Mercury 11/12/1875 p.2 Sydney Morning Herald 15/12/1875 p.7
1884	December	Glenbrook, Euroka to Erskine Creek		Nepean Times 27/12/1884, p.2
1885	January	Glenbrook vicinity		Nepean Times 3/1/1885, p.2
1886	(Summer)	Bell's Line of Road vicinity near Bell		Suttor p.174

1888	November	All areas, including Mount Victoria, Blackheath, Lawson, Glenbrook, Kurrajong Heights and Bowen Mountain, Hartley and Kanimbla Valleys.	Fences, timber, grass.	Sydney Morning Herald 6/11/1888 p.8, 14/11/1888 p.11., 15/11/1888 p.8, 16/11/1888 p.8, 3/12/1888 p.5 Nepean Times 10/11/1888 p.4 Windsor and Richmond Gazette 17/11/1888 p.5
1891	December	Kanangra Walls vicinity		ML Newspaper Cuttings (Q991/N) Vol.46 p.4
1894	November	Near Lawson and Blackheath		Mountaineer 16/11/1894 p.3
1895	August	Katoomba North, Leura, Blackheath, Kanimbla Valley		Mountaineer 30/8/1895 p.3
1895	September	All areas including Blackheath, Shipley, Mt. Victoria, Katoomba, Lawson, Springwood, Megalong Valley, Kanimbla Valley	3 cottages burnt down (Mt. Victoria -1, Springwood -2), fencing on mountains and in valleys, railway sleepers burnt	Mountaineer 13/9/1895 p.2
1896	January	Blackheath, Bell		Sydney Morning Herald 14/1/1896 p.6
1897		Leura vicinity		Mountaineer 20/1/1899 p.2
1899	January	Katoomba, Lawson and 'other Mountain centres'		Mountaineer 20/1/1899 p.2
1900	October	Mt. Victoria (near Pass)		Mountaineer 26/10/1900 p.3
1901	November	Katoomba vicinity (Upper Cascades, Federal Pass)		Mountaineer 29/11/1901 p.3
1901	December	Many areas including Springwood, Lawson, Hazelbrook, Leura, Wentworth Falls, Jamison Valley	3 cottages burnt, one reduced to ashes, and several outhouses and stables also burnt.(North Springwood), navvies boarding house and tents burnt out (Lawson), a large quantity of milled timber burnt	Sydney Morning Herald 30/12/1901 p.8 Mountaineer 3/1/1902 p.3
1904	December	All areas including Katoomba, Medlow Bath, Wentworth Falls, Leura, Megalong Valley, Kanimbla Valley	Minor damage at Medlow Bath. Hydro Majestic narrowly saved by about 100 firefighters.	Mountaineer 9/12/1904 p.4

1905	January	All areas including Glenbrook, Mount Victoria, Hartley, Kurrajong Heights, Katoomba, Lawson, Megalong Valley, Mount York, Burragorang Valley	6 Houses, a church, woolsheds, fences destroyed, over 3000 sheep and cattle killed (Megalong). 2 Houses, orchards (Lawson). Farm burnt out at Hartley. Fruit trees, poultry and pigs killed (Kurrajong Heights). Silver Peaks mine and miners huts totally destroyed (Burragorang).	Sydney Morning Herald 2/1/1905 pp.7-8, 3/1/1905 p.6 Mountaineer 6/1/1905 p.5
1905	November	Lapstone vicinity, Leura Falls	1 house burnt, fences and crops (near Emu Plains)	Sydney Morning Herald 29/11/1905 p.9 Mountaineer 10/11/1905 p.5
1908	December	Glenbrook, Wentworth Falls	1 cottage burnt (Wentworth Falls), apiary and outhouses (Glenbrook)	Sydney Morning Herald 1/1/1909 p.5
1909	December	Hazelbrook, Leura, Katoomba South	2 houses and 1 cottage burnt down (Hazelbrook -2, Leura - 1), stables, sheds, crops and fencing	Sydney Morning Herald 16/12/1909 p.6 Blue Mountain Echo 18/12/1909 p.3
1910	October	Katoomba Falls vicinity		Blue Mountain Echo 22/10/1910 p.12
1911	November	Blackheath vicinity (Hat Hill Road), Valley Heights, Leura (near Golf Links), Megalong Valley, Katoomba South	2 houses (Valley Heights) and 1 old building (Blackheath) burnt down. Damage to Valley Heights railway station	Sydney Morning Herald 13/11/1911 p.9, 18/11/1911 p.17 Blue Mountain Echo 17/11/1911 p.5
1912	February	Between Lawson and Wentworth Falls, Hazelbrook	Fences and railway sleepers	Blue Mountain Echo 16/12/1912 p.6
1913	December	Lawson		Blue Mountain Echo 5/12/1913 p.7
1915	October	Leura	Fences	Blue Mountain Echo 15/10/1915 p.2
1915	November	All areas including Katoomba, Wentworth Falls, Lawson, Blackheath, Mount Victoria, Hazelbrook, Jamieson Valley	16 properties destroyed (Lawson - 9, Hazelbrook - 5, Wentworth Falls - 2) sheds, fences	Blue Mountain Echo 19/11/1915 p.3 Sydney Morning Herald 16/11/1915 p.8 Cunningham 1984 p.16
1919	February	Megalong Valley	Over 1000 acres of grass	Blue Mountain Echo 7/2/1919 p.2
1922	November	Lawson, Wentworth Falls, Leura, Blackheath, Medlow Bath, Shipley		Blue Mountain Echo 17/11/1922 pp.5,9
1922	December	Katoomba	1 small cottage destroyed, fence posts	Blue Mountain Echo 29/12/1922 p.1
1923	January	Lawson, Hazelbrook, Woodford		Blue Mountain Echo 5/1/1923 p.8

1923	December	Lower Mountains including Glenbrook, Faulconbridge, Blackheath	3 cottages destroyed (Faulconbridge), sawmill destroyed (Glenbrook)	Blue Mountain Echo 14/12/1923 pp.3.7
1925	October	Blackheath	1 cottage slightly burnt	Blue Mountain Echo 23/10/1925 p.8
1926	February	Leura		Blue Mountain Echo 19/2/1926 p.3
1928	October	Lower Mountains including Woodford, Hazelbrook	5 houses destroyed (Woodford)	Sydney Morning Herald 8/10/1928 p.11 9/10/1928 p.11
1928	December	Leura, between Katoomba and Medlow Bath		Blue Mountain Echo 18/12/1928 p.2
1929	January	All areas including Katoomba, Leura, Wentworth Falls, Kings Tableland, Hartley Valley, Mount York, Jamison Valley, Wollondilly River area, Jenolan Caves		Sydney Morning Herald 5/1/1929 p.15
1929	February	Katoomba vicinity, Jamison Valley, Megalong Valley, Grose Valley	1 house (Katoomba) and mine toolshed burnt down, 14 electric light poles burnt	Blue Mountain Star 2/2/1929 p.1
1929	September	Near Katoomba		Blue Mountain Star 7/9/1929 p.10
1931	January	Between Linden and Faulconbridge		Blue Mountain Star 17/1/1931 p.2
1933	January	Mount Victoria Pass		Sydney Morning Herald 12/1/1933 p.9
1933	March	Wentworth Falls		Katoomba Daily 2/3/1933 p.4
1935	October	Katoomba, Blackheath, Hartley Valley		Katoomba Daily 11/10 and 17/10/1935 p.2, Sydney Morning Herald 29/10/1935 p.11 31/10/1935 p.11
1935	November	Woodford, Hazelbrook	1 cottage destroyed (Woodford)	Daily Telegraph 23/11/1935 p.5 Sydney Morning Herald 23/11/1935 p.17
1936	April	Leura		Blue Mountains Times 3/4/1936 p.1
1936	October	Wentworth Falls, Grose Valley, Katoomba	Fences, woolshed, fowl-houses, poultry burned, 1 cottage slightly burnt (Wentworth Falls)	Blue Mountains Times 16/10/1936 p.4 Sydney Morning Herald 28/10/1936 p.15 Katoomba Daily 10/10/1936 p.2

1936	November	Many areas including Valley Heights, Warrimoo, Glenbrook, Blaxland, Springwood, Faulconbridge, Katoomba, Wentworth Falls, Kurrjong Heights, Bilpin, Grose Valley, Yerranderie, Kowmung Valley and Hartley Valley	Over 33 cottages and houses destroyed (Glenbrook - 15, Warrimoo - 12, Valley Heights - 2 to 4, Wentworth Falls - 2, Kurrjong Heights - 1, Bilpin - 1), garages, hundreds of outhouses, miles of fencing, telegraph poles	Sydney Morning Herald 6/11/1936 p.13 7/11/1936 p.17, 10/11/1936 p.12, 11/11/1936 p.11, 12/11/1936 p.12 Nepean Times 12/11/1936 p.2 Katoomba Daily 7/11/1936 p.2, 13/11/1936 p.1
1938	December	Hazelbrook, Between Lawson and Wentworth Falls, Narrow Neck	5 cottages destroyed (Hazelbrook - 4, Wentworth Falls - 1)	Sydney Morning Herald 7/12/1938 p.13, 19/12/1938 p.11, 26/12/1938 p.9 Katoomba Daily 13/12/1938 p.3
1939	January	Medlow Bath, North Katoomba, Valley Heights, Mt. Wilson	1 cottage destroyed (North Katoomba)	Katoomba Daily 17/1/1939 p.2 H. Warliker, A Mount Wilson Childhood, p.44
1940	March	Katoomba, Wentworth Falls		Sydney Morning Herald 1/4/1940 p.10
1940	November	Lawson		Sydney Morning Herald 7/11/1940 p.9
1941	October	Wentworth Falls		Sydney Morning Herald 22/10/1941 p.12
1942	January	Wentworth Falls, Blackheath	1 cottage and 1 shack destroyed (Wentworth Falls), shelter shed burnt (Govett's Leap)	Blue Mountains Advertiser 9/1/1942 pp.1.4
1944	January	Blackheath		Blue Mountains Advertiser 31/1/1944 p.4
1944	November	All areas including Glenbrook, Lawson, Bullaburra, Springwood, Linden, Katoomba, Leura, Wentworth Falls, Hazelbrook, Woodford, Jamieson Valley, Grose Valley	23 houses destroyed (Woodford - 22, Springwood - 1) goods shed and van burnt at Woodford railway station	Sydney Morning Herald 6/11/1944 p.4, 14/11/1944 p.4, 15/11/1944 p.4, 16/11/1944 p.3, 18/11/1944 p.1, 20/11/1944 pp.1.4, 22/11/1944 p.1
1944	December	Many areas including Katoomba, Leura, Woodford, Faulconbridge, Blaxland, Glenbrook	7 cottages and houses destroyed (Leura - 2, Woodford - 2, Blaxland - 2, Glenbrook - 1), dairy, store and timber mill (Faulconbridge), kiosk, shelter shed, telegraph poles	Sydney Morning Herald 11/12/1944 p.4
1945	January	Leura, Jamieson Valley, Katoomba	8 houses destroyed (Leura)	Sydney Morning Herald 2/1/1945 p.3
1948	August	Wentworth Falls (Kings Tableland)		Blue Mountains Advertiser 27/8/1948 p.8
1948	September	Wentworth Falls, Bullaburra, Blackheath		Blue Mountains Advertiser 17/9/1948 p.3, 24/9/1948 p.1
1948	October	Hazelbrook, Grose Valley		Blue Mountains Courier 16/9/1948 p.7 Blue Mountains Advertiser 5/11/1948 p.8

1948	December	Many areas including Springwood, Katoomba, Wentworth Falls, Blackheath, Medlow Bath, Leura, Hazelbrook, Grose Valley, Jamison Valley, Mount Tomah	Blue Mountains Advertiser 24/12/1948 pp.8,10 7/1/1949 p.9
1949	August	Jamison Valley	Sydney Morning Herald 21/8/1949 p.1
1949	December	Between Blackheath and Mount Victoria, Grose Valley	Sydney Morning Herald 26/12/1949 p.3, 28/12/1949 p.4
1950	September	Katoomba, North Leura	Blue Mountains Advertiser 14/9/1950 p.1, 28/9/1950 p.1

Appendix 1 - Notes:

- 1) The bushfire records from the early 19th Century could be of fires deliberately lit by Aborigines.
- 2) The bushfire records prior to 1890 are incomplete and could be further expanded by additional searching of the existing newspapers of this period. These include regional newspapers, such as *The Nepean Times* (Penrith), *Lithgow Mercury* (Lithgow) *Bathurst Free Press*, *Bathurst Times* (Bathurst), *Camden News*, *Camden Times* (Camden), *Windsor and Richmond Gazette*, *Australian Windsor Richmond and Hawkesbury Advertiser*, *Hawkesbury Chronicle* (Windsor), *Cumberland Mercury*, *Cumberland Times* (Parramatta), and Sydney newspapers, particularly *The Sydney Morning Herald* and *Daily Telegraph*. Time restrictions prevented this substantial research from being undertaken during this study.
- 3) The bushfire records from 1890 to 1950 can be considered as substantially complete as sufficient newspaper and other sources are available to cover most of this period. Any bushfires missed are likely to have been very minor outbreaks.
- 4) Bushfire records since 1950 have not been included as they are numerous and available elsewhere. For example, detailed records of post-1950 bushfires in the Blue Mountains are held by various organisations. Including the National Parks and Wildlife Service (Blackheath), Blue Mountains City Council, Blue Mountains Emergency Centre (Katoomba), Forestry Commission (Bathurst, Oberon) and some local historical societies. Many of the post-1950 Blue Mountains newspapers, including the *Blue Mountains Advertiser*, *Blue Mountains Courier* and *The Blue Mountains Gazette* (formerly the *Mountain Gazette*) also contain numerous references to bushfires up to the present day. Older residents of the Blue Mountains could also provide oral history accounts of post-1950 bushfires.

APPENDIX 2

WATER CONNECTIONS IN THE BLUE MOUNTAINS 1948-1960

Town	1948	1949	1950	1951	1952	1953	1954	1955	1956	1957	1958	1959	1960	Increase +
Mount Victoria	123	133	145	156	168	171	174	178	180	186	187	196	202	69
Blackheath	982	1011	1055	1090	1115	1137	1145	1160	1176	1197	1220	1231	1247	236
Medlow Bath	59	59	64	66	68	69	69	69	71	73	77	79	82	23
Zone 1 Total	1164	1203	1264	1312	1351	1377	1388	1407	1427	1456	1484	1506	1531	328
Katoomba	2787	2871	2975	3046	3092	3143	3180	3207	3230	3257	3288	3313	3335	464
Leura	363	399	441	474	508	527	542	554	563	580	593	605	620	221
Zone 2 Total	3150	3270	3416	3520	3600	3670	3722	3761	3793	3837	3881	3918	3995	685
Wentworth Falls	506	546	580	623	654	673	690	707	724	746	766	771	776	270
Bullaburra	108	125	148	159	168	171	174	175	182	188	193	193	193	85
Lawson	387	421	453	471	494	508	516	526	536	555	562	569	573	186
Hazelbrook	272	292	316	344	365	384	395	405	425	439	445	457	469	197
Woodford	138	144	151	157	167	174	185	189	205	209	216	221	228	90
Zone 3 Total	1411	1528	1648	1754	1848	1910	1960	2002	2072	2137	2182	2211	2239	828
Linden	14	17	18	22	22	23	24	24	25	27	27	29	n/a	15
Faulconbridge	191	224	266	284	305	317	334	344	364	376	393	404	n/a	213
Springwood	641	679	707	754	789	811	840	896	943	978	998	1037	n/a	396
Valley Heights	48	55	66	75	83	88	89	90	96	100	107	121	n/a	73
Warrimoo	222	260	279	308	330	343	350	360	376	395	415	440	n/a	218
Blaxland	131	148	177	193	214	236	255	284	325	390	447	506	n/a	375
Glenbrook	294	334	373	412	451	493	527	563	602	635	669	717	n/a	423
Zone 4 Total	1541	1717	1886	2048	2194	2311	2419	2561	2731	2901	3056	3254	3531	1990
Total Water Connections	7266	7718	8214	8634	8993	9268	9489	9731	10023	10331	10603	10889	11296	3831

Source: BMCC City Engineer's Report, 1960 p.95, BMCC Town Planning Scheme Reports, 1967 at Local Studies, Blue Mountains City Library, Springwood.
n/a - no figure provided.

APPENDIX 3

BLUE MOUNTAINS SEWERAGE SYSTEMS (1987)

System	Date Opened	Area Drained	Number of Sewage Pumping Stations	Nominal Capacity of Sewage Treatment Plant (E.P.)	Current Load (1987) (E.P.)	Details of Treatment	Level of Treatment	Effluent Disposal
Glenbrook	1975	Lapstone, Glenbrook, Blaxland, Warrimoo	25	20,000	10,000	Activated Sludge and Tertiary Filters	Tertiary	Lapstone Creek then Nepean River
Mount Riverview	1973	Mount Riverview	2	5,000	4,400	Trickling Filters and Tertiary Filters	Tertiary	Lapstone Creek then Nepean River
Valley Heights	1977	Valley Heights and part Springwood	11	2,000	2,960	Activated Sludge (Pasveer Ditch)	Secondary	Fitzgeralds Creek then Nepean River
Springwood	1957	Springwood, Faulconbridge	10	4,000	5,190	Trickling Filters	Secondary	Fitzgeralds Creek then Nepean River
North Springwood	1976	North Springwood subdivision	0	800	260	Activated Sludge and Tertiary Filters	Secondary	Fraser's Creek then Nepean River
Winmalee	1984	Winmalee	1	9,000	1,850	Activated Sludge and Tertiary (Oxidation) Ponds	Tertiary	Unnamed Creek then Nepean River
Hazelbrook	1962	Hazelbrook, Lawson, Bullaburra	15	5,000	4,810	Trickling Filters	Secondary	Hazelbrook Creek then Grose River
Wentworth Falls	1969	Wentworth Falls and part Leura	12	5,000	3,700	Trickling Filters	Secondary	Blue Mountain Creek then Grose River
South Katoomba	1934	South Katoomba and part Leura	0	20,000	14,810	Trickling Filters	Secondary	Leura Falls Creek then Coxs River
North Katoomba	1937	North Katoomba and Yosemite	0	3,000	2,960	Trickling Filters	Secondary	Katoomba Creek then Grose River
Blackheath	1938	Blackheath	6	5,000	4,440	Trickling Filters	Secondary	Hat Hill Creek then Grose River
Mount Victoria	1970	Mount Victoria	1	500	370	Activated Sludge (Pasveer Ditch)	Secondary	Fairy Dell Creek then Coxs River

Source: MWSDB, Blue Mountains Sewerage: Effluent Management and the Environment, Sydney, March 1987, p.6. (E.P. = Equivalent Population)

APPENDIX 4

ABORIGINAL USE OF PLANTS IN THE BLUE MOUNTAINS REGION

All of the plants listed were used by Aboriginal people and occur in the Blue Mountains region however in many cases their local use is unconfirmed by historical sources and is instead inferred. This list is indicative only as many other species may also have been used.

FOOD PLANTS

Species Name	Common Name or Description	Edible Part of Plant
<i>Acacia</i> spp.	Wattles	Seeds - roasted
<i>Acianthus reniformis</i>	Mosquito Orchid	Tuber
<i>Acmena smithii</i>	Lillypilly	Fruit
<i>Adriana glabrata</i>	Shrub	Fruit
<i>Alectryon subcinereus</i>	Native Quince	Fruit
<i>Amyema</i> spp.	Mistletoes	Fruit
<i>Anguillaria</i> spp.	Grass Herb	Tuber
<i>Arthropodium milleflorum/minus</i>	Vanilla Lily	Tuber
<i>Banksia</i> spp.	Banksias	Nectar
<i>Billardiera scandens</i>	Apple Berry	Fruit
<i>Blechnum</i> spp.	Ground Ferns	Underground stem
<i>Brachychiton populneum</i>	Kurrajong	Seeds
<i>Breyntia oblongifolia</i>	Shrub	Fruit
<i>Bulbine bulbosa</i>	Native Leek	Bulb
<i>Burchardia umbellata</i>	Herb	Tuber
<i>Caladenia</i> spp.	Ground Orchids	Tuber
<i>Callistemon</i> spp.	Bottlebrushes	Nectar
<i>Caesia vitata</i>	Tufted Herb	Tuber
<i>Cayratia clematidea</i>	Climber	Fruit, Root
<i>Cissus</i> spp.	Native Grapes	Fruit
<i>Citriobatus pauciflorus</i>	Orange Thorn	Fruit
<i>Coprosma</i> spp.	Shrub	Fruit
<i>Cryptostylis</i> spp.	Ground Orchids	Tuber
<i>Cyathea australis</i>	Tree Fern	Pith, Young Fronds
<i>Cymbidium suave</i>	Epiphyte	Tuber
<i>Davallia pyxidata</i>	Hare's Foot Fern	Root
<i>Dendrobium</i> spp.	Rock Orchids	Bulb
<i>Dichopogon</i> spp.	Chocolate Lily	Tuber
<i>Dicksonia antarctica</i>	Soft Tree Fern	Pith, Young Fronds
<i>Dioscorea transversa</i>	Long Yam	Tuber - after leaching to detoxify
<i>Dipodium punctatum</i>	Hyacinth Orchid	Tuber
<i>Diuris</i> spp.	Herbs	Tuber
<i>Elaeocarpus reticulatus</i>	Blueberry Ash	Fruit
<i>Eleocharis sphacelata</i>	Water Chestnut	Tuber
<i>Eleodendron australe</i>	Red-fruited Olive Plum	Fruit
<i>Endiandra sieberi</i>	Corkwood	Fruit
<i>Eucalyptus</i> spp.	Gum Trees	Gum, Nectar
<i>Eupomatia laurina</i>	Bolwarra	Fruit
<i>Eustrephus latifolius</i>	Wombat Berry	Tuber
<i>Exocarpus cupressiformis</i>	Wild Cherry	Fruit
<i>Gahnia</i> spp.	Sedges	Leaf Buds
<i>Gastrodia sesamoides</i>	Potato Orchid	Tuber

<i>Geitonoplesium cymosum</i>	Climber	Tuber
<i>Glossodia australis</i>	Wax Lip Orchid	Tuber
<i>Glycine tabacina</i>	Climber	Root
<i>Grevillea</i> spp.	Grevillea	Nectar
<i>Haemodorum</i> spp.	Bloodroot	Underground stem
<i>Hakea</i> spp.	Hakea	Nectar
<i>Hedycarya angustifolia</i>	Native Mulberry	Fruit
<i>Hypoxis hygrometrica</i>	Grass Herb	Underground stem
<i>Jacksonia scoparia</i>	Dogwood	Fruit
<i>Lambertia</i> spp.	Mountain Devils	Nectar
<i>Leptomeria acida</i>	Sour Current Bush	Fruit
<i>Leucopogon</i> spp.	Shrubs	Fruit
<i>Lissanthe</i> spp.	Shrubs	Fruit
<i>Lomandra longifolia</i>	Mat Rush	Leaf base
<i>Lomatia ilicifolia</i>	Lomatia	Nectar
<i>Macrozamia communis</i>	Burrawang, Cycad	Seed kernels - after leaching to detoxify
<i>Marsdenia</i> spp.	Native Potato	Tuber, Leaf, Stem
<i>Marsilea nutica</i>	Nardoo	Spore cases - ground and baked
<i>Melia azedarach</i>	White Cedar	Fruit
<i>Microseris scapigera</i>	Daisy Yam	Tuber
<i>Microtis</i> spp.	Onion Orchids	Bulb
<i>Monotoca scoparia</i>	Heath Shrub	Fruit
<i>Morinda jasminoides</i>	Woody Climber	Fruit
<i>Nymphaea</i> spp.	Water Lily	Tuber
<i>Oxalis corniculata</i>	Herb	Leaves
<i>Parsonia straminea</i>	Climber	Root
<i>Passiflora herbertiana</i>	Passion-flower	Fruit
<i>Patersonia</i> spp.	Herbs	Underground stem
<i>Persoonia</i> spp.	Geebung	Fruit
<i>Podocarpus</i> spp.	Plum Pines	Kernel, Stalk
<i>Polygonum hydropiper</i>	Water Pepper	Root
<i>Prasophyllum fimbriatum</i>	Fringed Midge Orchid	Tuber
<i>Pteridium esculentum</i>	Bracken Fern	Underground stem, Frond
<i>Pterostylis</i> spp.	Green Hood Orchids	Tuber
<i>Rapanea variabilis</i>	Mutton Wood	Fruit
<i>Rubus</i> spp.	Native Raspberries	Fruit
<i>Sambucus</i> spp.	Native Elderberrys	Fruit
<i>Schizomeria ovata</i>	White Cherry	Fruit
<i>Scirpus litoralis</i>	Club Rush	Tuber
<i>Solanum aviculare / laciniatum</i>	Kangaroo Apple	Fruit
<i>Styphelia</i> spp.	Heath Shrubs	Fruit
<i>Syzygium paniculatum</i>	Magenta Lillypilly/Brush Cherry	Fruit
<i>Tasmannia</i> spp.	Pepper Trees	Fruit, Leaf
<i>Telopea speciosissima</i>	Waratah	Nectar
<i>Thelymitra</i> spp.	Sun Orchids	Tuber
<i>Thysanotus tuberosus</i>	Herb	Tuber
<i>Trachymene incisa</i>	Herb	Root
<i>Triglochin procera</i>	Water Ribbon	Tuber
<i>Typha</i> spp.	Bulrush	Root
<i>Xanthorrea</i> spp.	Grass Trees	Young shoots

PLANTS USED FOR NON-FOOD PURPOSES

Species Name	Common Name or Description	Plant Use
<i>Acacia</i> spp.	Wattles	Bark medicinal and fish poison, gum adhesive, wood for tools
<i>Acacia longifolia</i>	Sydney Golden Wattle	Fish poison
<i>Acacia melanoxylon</i>	Blackwood (Wattle)	Fish poison
<i>Alphitonia excelsa</i>	Forest Tree	Fish poison
<i>Backhousia myrtifolia</i>	Forest Tree	Wood for boomerangs
<i>Blechnum</i> spp.	Ground Ferns	Sap medicinal
<i>Brachychiton populneum</i>	Kurrajong	Gum adhesive, fibre
<i>Cassytha</i> spp.	Vines	Medicinal
<i>Casuarina</i> spp.	Casuarina (She-Oaks)	Bark, wood for shelters, canoes
<i>Cissus</i> spp.	Native Grapes	Root medicinal
<i>Commersonia fraseri</i>	Shrub	Fibre
<i>Cyathea australis</i>	Tree Fern	Extract for medicinal tonic
<i>Cymbidium suave</i>	Epiphyte	Medicinal
<i>Dianella laevis</i>	Herb	Fibre
<i>Doryphora sassafras</i>	Sassafras	Bark extract for tonic
<i>Drosera peltata</i>	Pale Sundew	Respiratory illness e.g. asthma, coughs
<i>Duboisia myoporoides</i>	Corkwood	Inducing sleep (narcotic)
<i>Eucalyptus</i> spp.	Gum Trees	Wood and Bark for tools (e.g. coolmons, shields, digging sticks), Fibre, Gum for medicinal
<i>Exocarpus cupressiformis</i>	Wild Cherry	Medicinal
<i>Ficus coronata</i>	Sandpaper Fig	Leaves for sanding wood
<i>Gahnia</i> spp.	Sedges	Seeds antiseptic
<i>Gnaphallium luteo-album</i>	Grass Herb	Medicinal
<i>Gymnostachys anceps</i>	Herb	Fibre
<i>Haemodorum corymbosum</i>	Blood Root	Anti-venom
<i>Imperata cylindrica</i>	Grass Herb	Fibre
<i>Isotoma</i> spp.	Bluebells	Inducing sleep (narcotic)
<i>Lomandra longifolia</i>	Mat Rush	Fibre
<i>Lycopodium</i> spp.	Club Mosses	Coughs, diarrhoea
<i>Melaleuca</i> spp.	Paperbarks	Bark for shelters, wrapping
<i>Persoonia</i> spp.	Geebung	Medicinal
<i>Pimelia</i> spp.	Shrubs	Fibre
<i>Polygonum hydropiper</i>	Water Pepper	Fish poison - stem
<i>Rulingia pannosa</i>	Shrub	Fibre
<i>Scaevola</i> spp.	Fan Flowers	Root extract for stomach pains
<i>Schoenus melanostachys</i>	Herb	Fibre
<i>Smilax glycyphilla</i>	Sarsapilla	Medicinal
<i>Sphagnum</i> spp.	Peat Moss	Wound dressing
<i>Xanthorrea</i> spp.	Grass Trees	Spear Shafts, Resin adhesive
<i>Xyris ustulata</i>	Tufted Herbs	Antiseptic

Sources: Adapted from J.L. Kohen and A.J. Downing, 'Aboriginal Use of Plants on the Western Cumberland Plain', *Sydney Basin Naturalist*, No.1, 1992, pp.1-8. J. Merriman, 'Difficult, Rocky, Sandy, Stoney, Flowery: Aboriginal Ecology in the Blue Mountains', in Stockton E. (ed.), *Blue Mountains Dreaming: The Aboriginal Heritage*, Winmalee, 1993, pp.82-110. N.C.W. Beadle, O.D. Evans, R.C. Carolin, *Flora of the Sydney Region*, Sydney, 1976.

APPENDIX 5

MAJOR WEEDS IN THE BLUE MOUNTAINS REGION		
Common Name	Species Name	Declared Noxious in the Blue Mountains City Area (X)
Balloon Vine	<i>Cardiospermum grandiflorum</i>	
Bathurst (and other) Burrs	<i>Xanthium spp.</i>	X
Blackberry	<i>Rubus fruticosus (agg.) spp.</i>	X
Camphor Laurel	<i>Cinnamomum camphora</i>	
Cotoneaster	<i>Cotoneaster spp.</i>	
Dandelion	<i>Taraxacum officinale</i>	
English / Scotch Broom	<i>Cytisus scoparius</i>	X
Fleabane	<i>Conyza spp.</i>	
Foxglove	<i>Digitalis purpurea</i>	
Orse	<i>Ulex europaeus</i>	X
Hemlock	<i>Corium maculatum</i>	
Japanese Honeysuckle	<i>Lonicera japonica</i>	
Lantana	<i>Lantana camara</i>	
Monterey Pine / Radiata Pine	<i>Pinus radiata</i>	
Morning Glory	<i>Ipomoea spp.</i>	
Moth Plant	<i>Araujia hortorum</i>	
Pampas Grass	<i>Cortaderia spp.</i>	X
Paterson's Curse	<i>Echium spp.</i>	X
Potato Vine	<i>Rumex saggitatus</i>	
Privet	<i>Ligustrum spp.</i>	
Purple Top	<i>Verbena bonariensis</i>	
Rhus Tree	<i>Toxicodendron succedaneum</i>	X
Salvinia (Aquatic)	<i>Salvinia molesta</i>	X
Serrated Tussock	<i>Nassella trichotoma</i>	X
St. John's Wort	<i>Hypericum perforatum</i>	X
Sweet Briar	<i>Rosa rubiginosa</i>	
Thistles	<i>Sonchus spp., Cirsium spp.</i>	
Tree of Heaven	<i>Allanthus altissima</i>	
Tree Lucerne	<i>Chamaecytisus proflifer</i>	
Wandering Dew	<i>Commelina spp.</i>	
Willows	<i>Salix spp.</i>	

Sources: This list is only of the most significant and widespread weeds in the Blue Mountains as indicated by a variety of sources, including S. Jackson, 'Control of Introduced Plants and Animals: Blue Mountains, Kanangra-Boyd and Wollemi National Parks' unpublished report, NSW National Parks and Wildlife Service, Blackheath, 1984, unpublished lists of weeds recorded in the Blue Mountains compiled by T. Vanamois, NPWS, Blackheath 1985, Blue Mountain Historical Society Files and other unpublished papers.

APPENDIX 6

FOREIGN VERTEBRATE ANIMALS INTRODUCED TO THE BLUE MOUNTAINS REGION		
COMMON NAME	SPECIES NAME	REASON FOR INTRODUCTION
MAMMALS		
Horse	<i>Equus caballus</i>	Draught, Transport
Cattle	<i>Bos taurus</i>	Meat, Draught, Milk, Hides
Sheep	<i>Ovis aries</i>	Meat, Wool
Pig	<i>Sus scrofa</i>	Meat
Goat	<i>Capra hircus</i>	Meat, Milk
Dog/Dingo	<i>Canis familiaris/ dingo</i>	Companion, Hunting Assistant
Red Fox	<i>Vulpes vulpes</i>	Hunt
Cat	<i>Felis catus</i>	Companion
Rabbit	<i>Oryctolagus cuniculus</i>	Hunt
Hare	<i>Lepus capensis</i>	Hunt
Black Rat	<i>Rattus rattus</i>	Accidental
Brown Rat	<i>Rattus norvegicus</i>	Accidental
House Mouse	<i>Mus musculus</i>	Accidental
BIRDS		
Domestic Fowl *	<i>Gallus gallus</i>	Meat, Eggs
Domestic Duck *	<i>Anas platyrhynchos</i>	Meat, Eggs, Feathers
Domestic Goose *	<i>Anser anser</i>	Meat, Eggs, Feathers
Turkey *	<i>Meleagris gallopavo</i>	Meat, Eggs
Mallard Duck	<i>Anas platyrhynchos</i>	Pleasure, Hunt
Pigeon	<i>Columba livia</i>	Pleasure
Spotted Turtle-Dove	<i>Streptopelia chinensis</i>	Pleasure
Skylark	<i>Alauda arvensis</i>	Pleasure
Red-whiskered Bulbul	<i>Pycnonotus jocosus</i>	Pleasure
Blackbird	<i>Turdus merula</i>	Pleasure
European Goldfinch	<i>Carduelis carduelis</i>	Pleasure
House Sparrow	<i>Passer domesticus</i>	Pleasure
Starling	<i>Sturnus vulgaris</i>	Pleasure
Common Mynah	<i>Acridotheres tristis</i>	Pleasure
FISH		
Brown Trout	<i>Salmo trutta</i>	Hunt
Rainbow Trout	<i>Salmo gairdneri</i>	Hunt
Brook Trout	<i>Salvelinus fontinalis</i>	Hunt
European Carp *	<i>Cyprinus carpio</i>	Pleasure
Goldfish *	<i>Carassius auratus</i>	Pleasure

* Has not established wild populations.

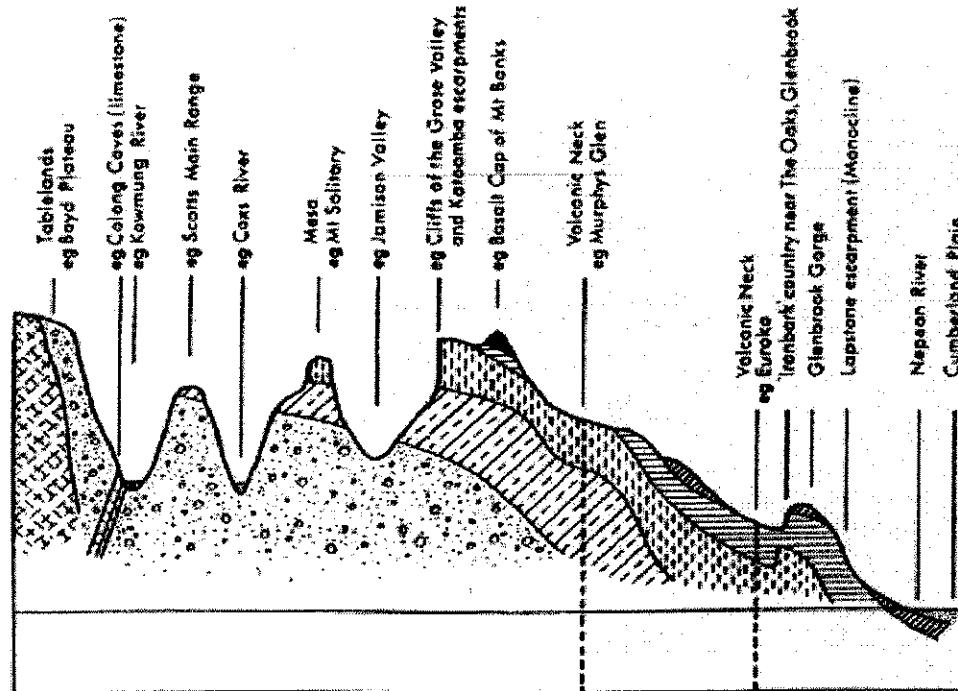
Sources: J. Smith and P. Smith, *Fauna of the Blue Mountains*, Sydney, 1990, K. Myers, 'Introduced Vertebrates in Australia, with Emphasis on the Mammals', in R.H. Groves and J.J. Burdon (eds.), *Ecology of Biological Invasions*, Cambridge, 1986, pp.120-136, A.H. Weatherley and J.S. Lake, 'Introduced Fish Species in Australian Inland Waters', in A.H. Weatherley (ed.), *Australian Inland Waters and their Fauna*, Canberra, 1967, pp.217-239, and various Blue Mountains newspaper reports.

LIST OF FIGURES

Figure 1.1 - Geological Cross Section of the Blue Mountains	49
Figure 1.2 - Distribution of Aboriginal Sites in the Central Blue Mountains	50
Figure 1.3 - Gundungurra and Dharug Land Access Routes	51
Figure 1.4 - Alternative Road Routes at Lapstone Hill	52
Figure 1.5 - Alternative Road Routes at Mount York	53
Figure 1.6 - The Lapstone Zig Zag and Deviations	54
Figure 1.7 - The Lithgow Zig Zag	55
Figure 1.8 - The Lithgow Zig Zag (ca. 1880)	56
Figure 1.9 - Katoomba Coal Mine Incline Tramway (ca. 1892)	57
Figure 1.10 - Coal and Shale Oil Mines near Katoomba	58
Figure 1.11 - The Dog Face Rock Landslide near Katoomba (ca. 1931)	59
Figure 1.12 - Exhibition Chamber, Lucas Cave, Jenolan Caves	60
Figure 1.13 - Cross Section of Jenolan Caves	61
Figure 2.1 - Cascade Creek Dam No.1, Katoomba (ca. 1907)	62
Figure 2.2 - Cascade Creek Dams, Katoomba	63
Figure 2.3 - Lake Medlow Dam (1907)	64
Figure 2.4 - Diagram of Blue Mountains Water Supply (1974)	65
Figure 2.5 - Warragamba Emergency Scheme Weir (1940)	66
Figure 2.6 - Warragamba Dam (1960)	67
Figure 2.7 - Katoomba Sewerage (ca. 1920)	68
Figure 2.8 - Promotional Photos of Blue Mountains Waterfalls	69
Figure 3.1 - Pollen and Charcoal Abundance at Lake George, NSW	70
Figure 3.2 - Newspaper Advertisements Encouraging Women in the Blue Mountains to Use More Electricity	71
Figure 3.3 - Houses Destroyed by Bushfires at Warrimoo, 1968	72
Figure 3.4 - Bushfire Fighters, Springwood, 1968	73

Figure 3.5 - Approximate Paths of Major Bushfires in the Blue Mountains Which Caused Urban Property Damage (1911-1988)	74
Figure 4.1 - Advertisement Promoting the Mountain Air (1882)	75
Figure 5.1 - Railway Sleepers Being Loaded at Faulconbridge (1922)	76
Figure 5.2 - Cartoon on Wildflower Picking	77
Figure 5.3 - Sid Bellingham Advertisement (1888)	78
Figure 5.4 - Sports Hunting in the Megalong Valley (ca. early 1900s)	79
Figure 5.5 - Advertisement for Weedkiller to Eradicate Blackberry	80
Figure 5.6 - Dairy Farm near Katoomba (ca. 1910)	81
Figure 5.7 - Bullock Team in the Blue Mountains (ca. 1920)	82
Figure 5.8 - Cart Load of Rabbit Carcasses, Megalong Valley (ca. early 1900s)	83
Figure 5.9 - Myles Dunphy's Proposed Blue Mountains National Parks (1932)	84

**Figure 1.1 - Geological Cross Section of the Blue Mountains
(Nepean River to Boyd Plateau)**

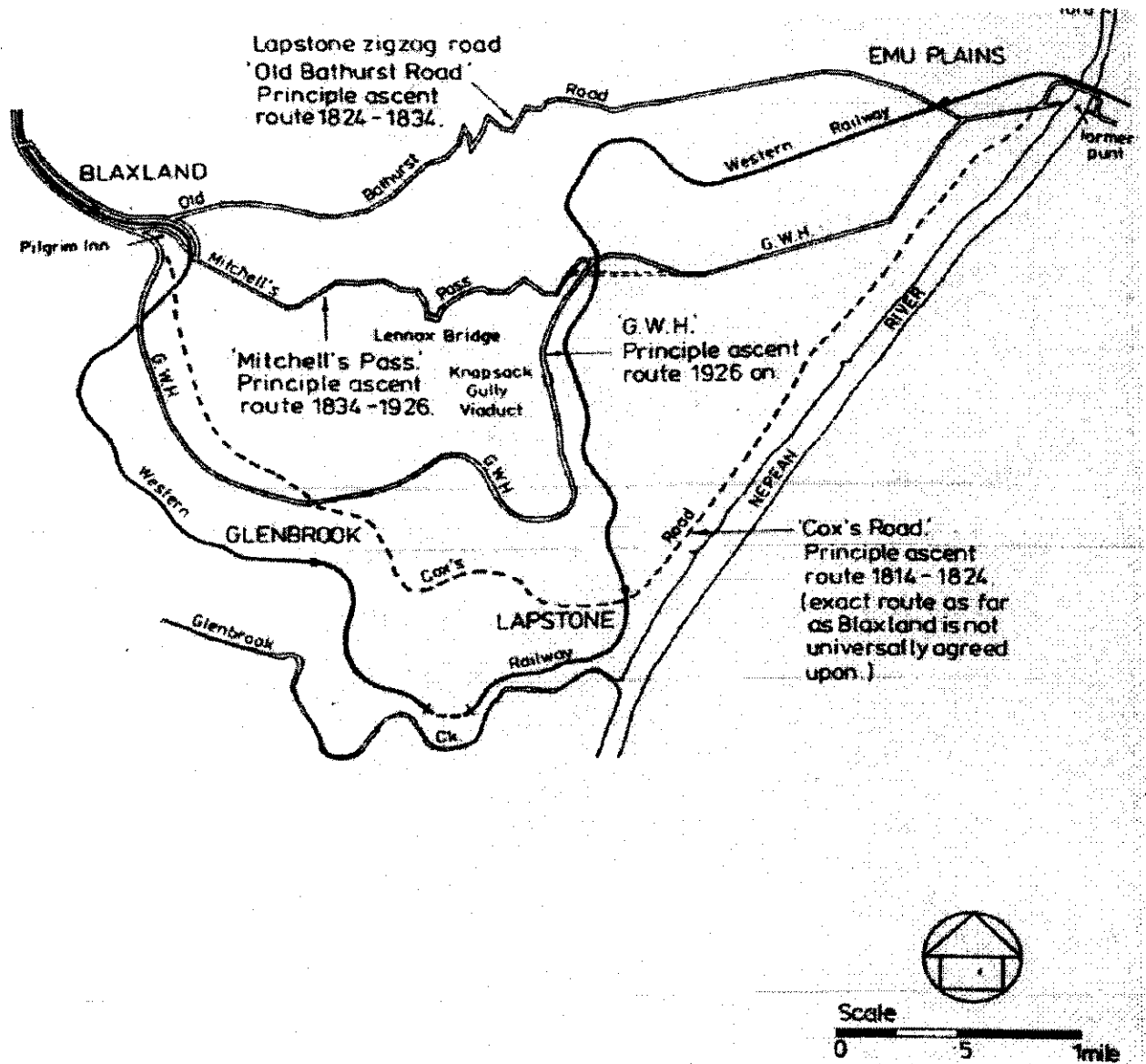


LEGEND

Quaternary		Hawkesbury Sandstone		Limestone	
Basalt		Narrabeen Group		Granite	
Wianamatta Group		Permian		Basement	

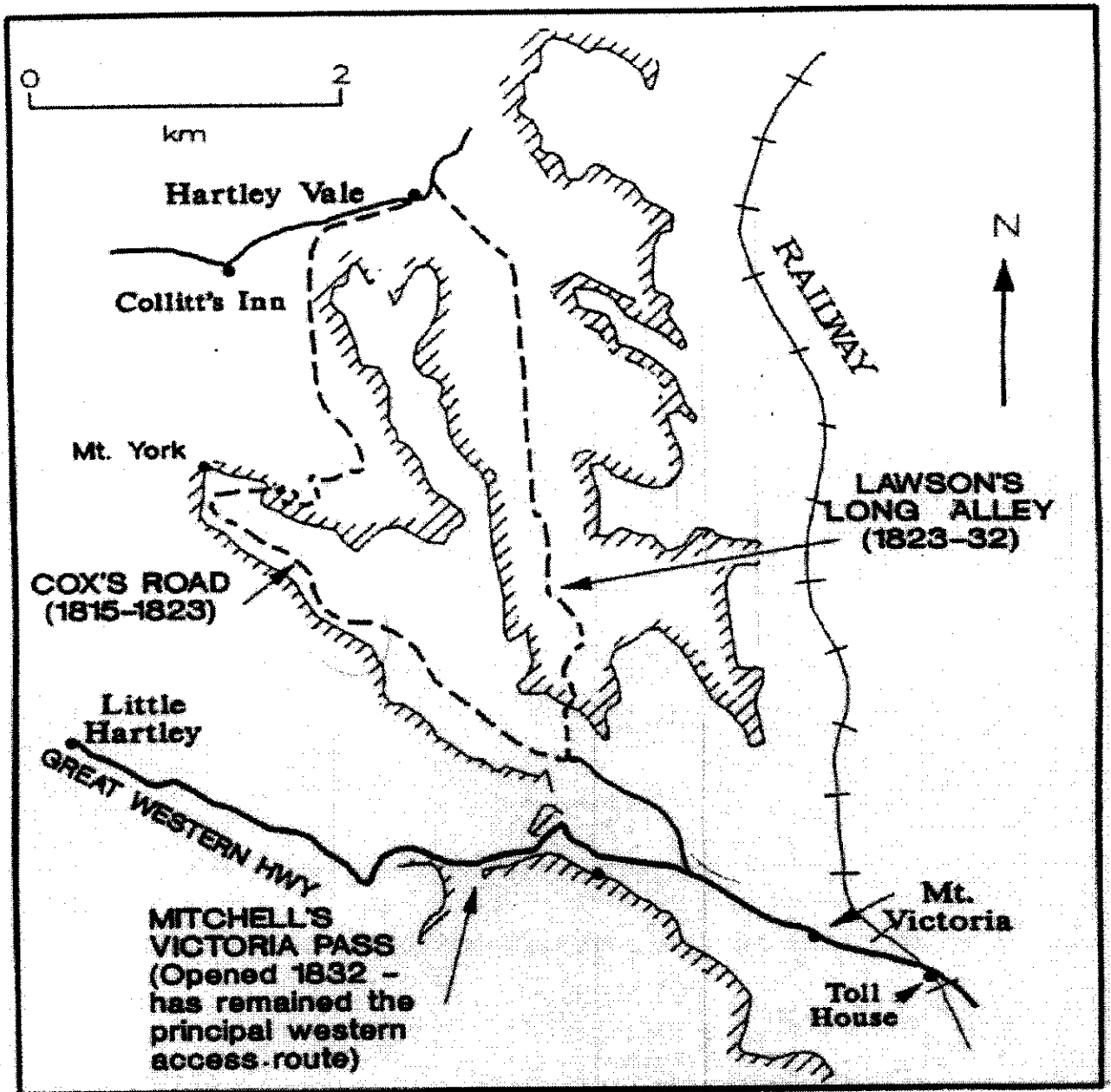
Source: G. Mosley, *Blue Mountains For World Heritage*, Sydney, 1989, p. 18

Figure 1.4 - Alternative Road Routes at Lapstone Hill



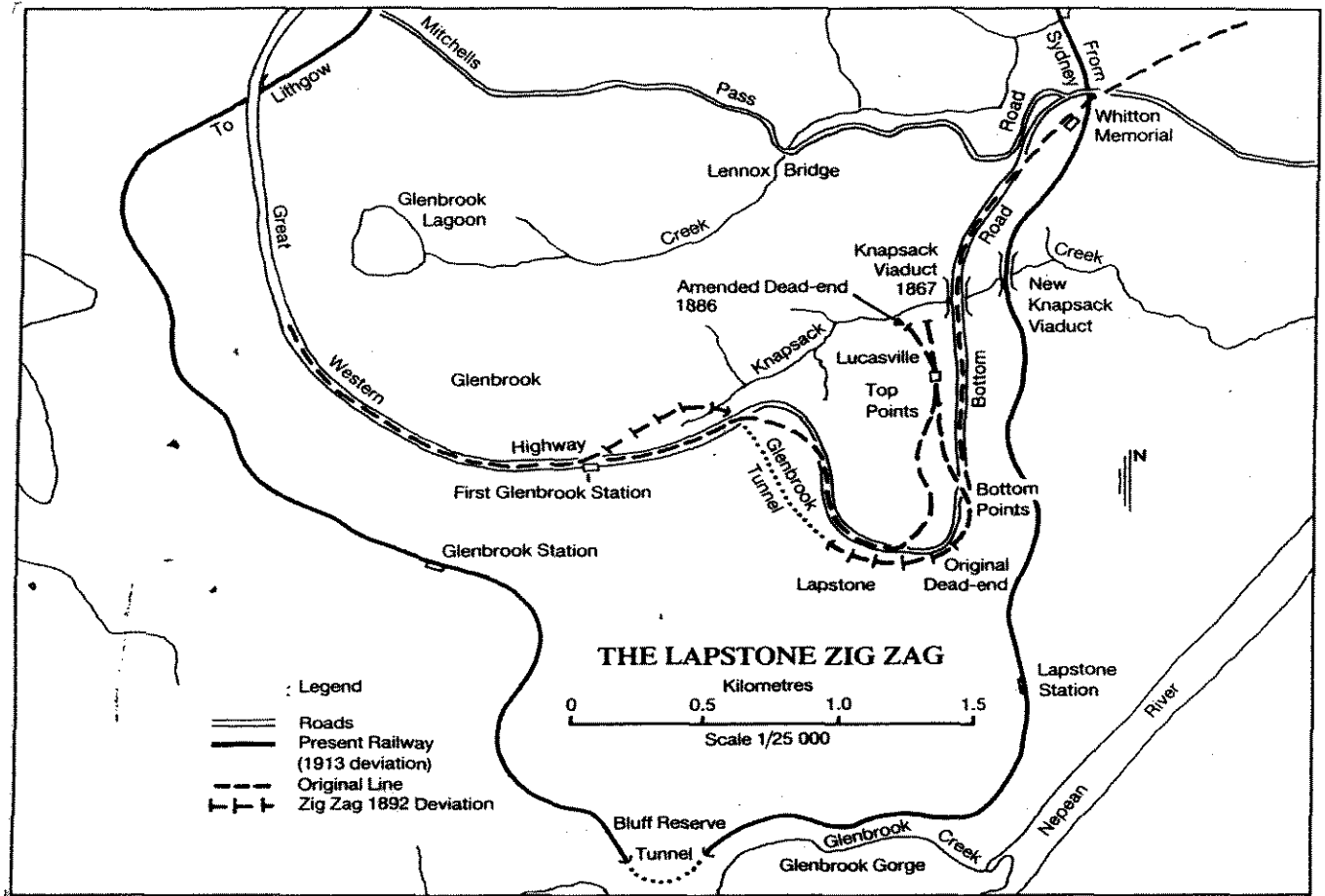
Source: Croft & Associates/Meredith Walker, *Blue Mountains Heritage Study*, Sydney, 1985, p.37.

Figure 1.5 - Alternative Road Routes at Mount York



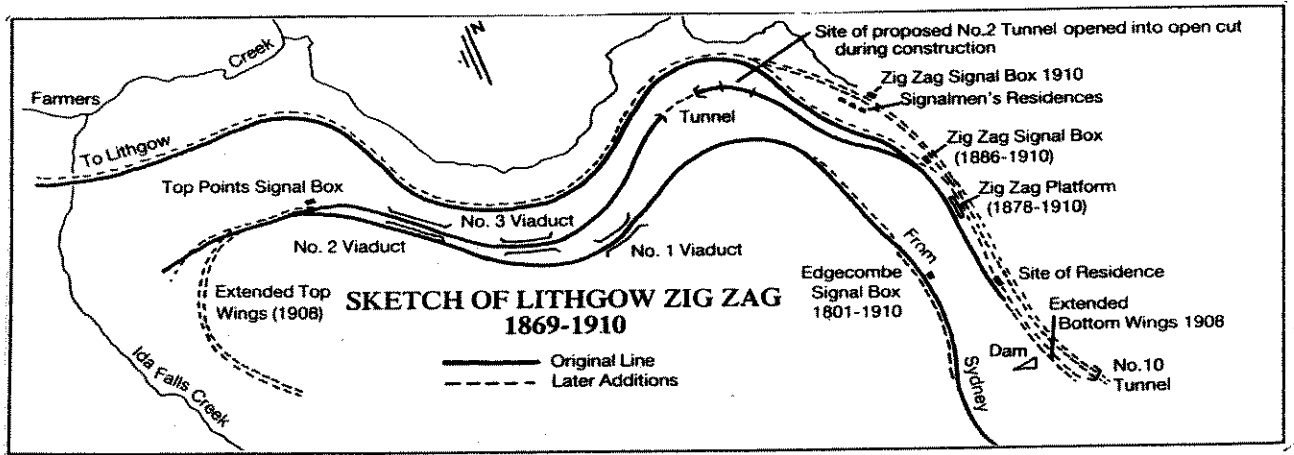
Source: K. Hartig, *Images of the Blue Mountains*, Sydney, 1986, p.31.

Figure 1.6 - The Lapstone Zig Zag and Deviations



Source: J. Bentley, *Black Smoke, Blue Mountains*, Bathurst, 1988, p.33.

Figure 1.7 - The Lithgow Zig Zag



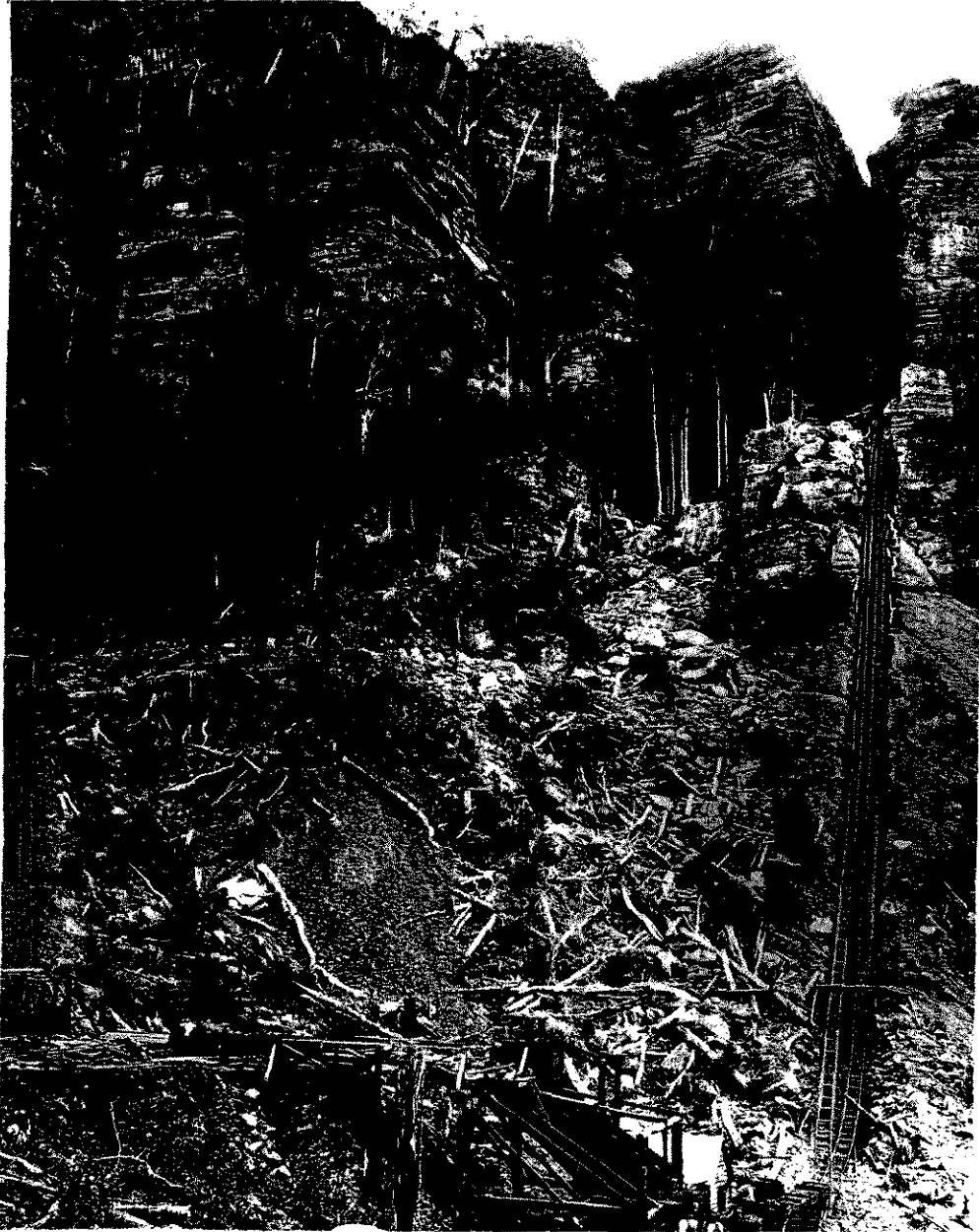
Source: J. Bentley, *Black Smoke, Blue Mountains*, Bathurst, 1988, p.62.

Figure 1.8 - The Lithgow Zig Zag (ca. 1880)



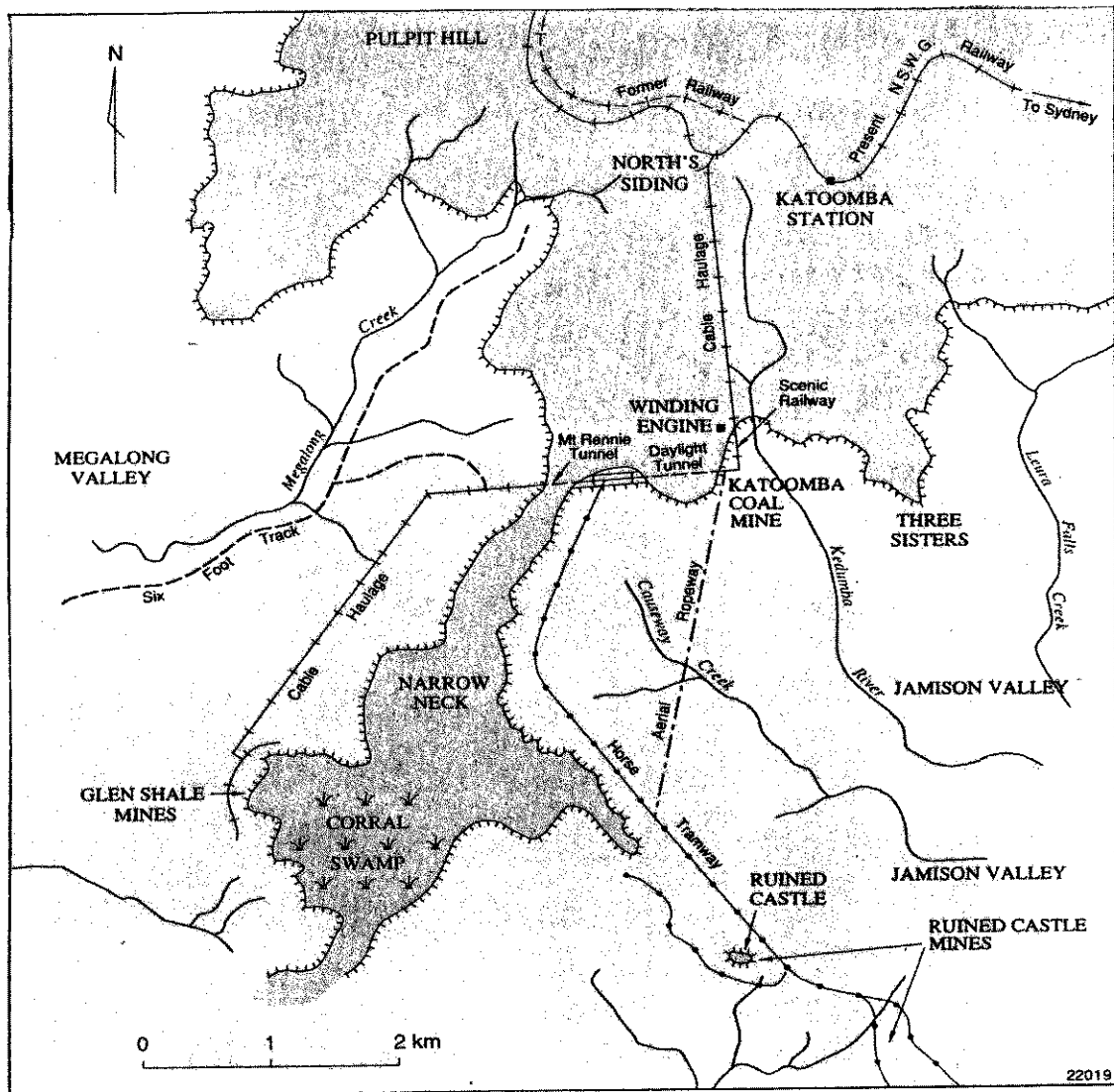
Source: Courtesy of the Blue Mountains City Library, Springwood

Figure 1.9 - Katoomba Coal Mine Incline Tramway (ca. 1892)



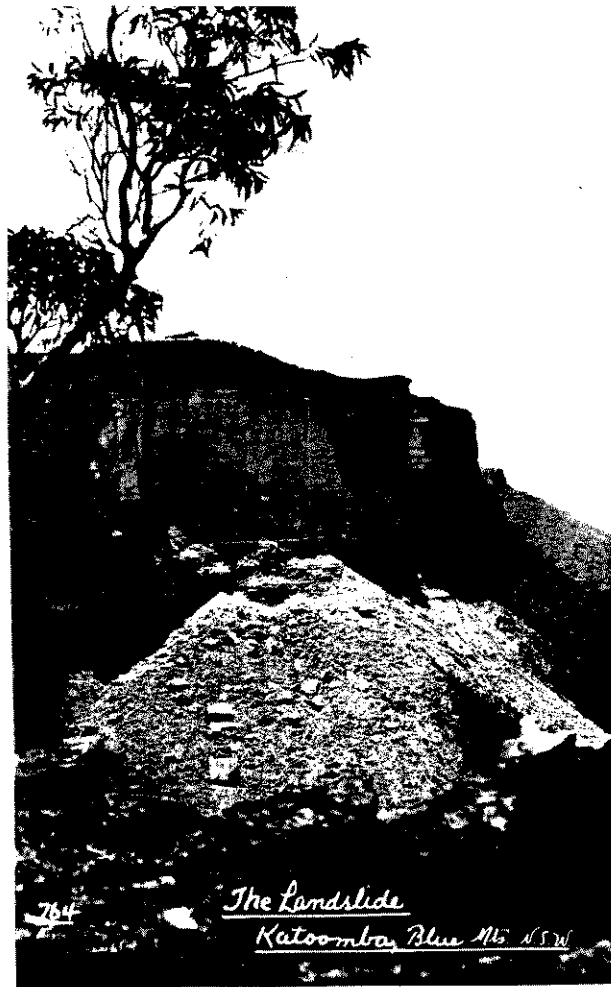
Source: Courtesy of the Blue Mountains City Library, Springwood

Figure 1.10 - Coal and Shale Oil Mines near Katoomba



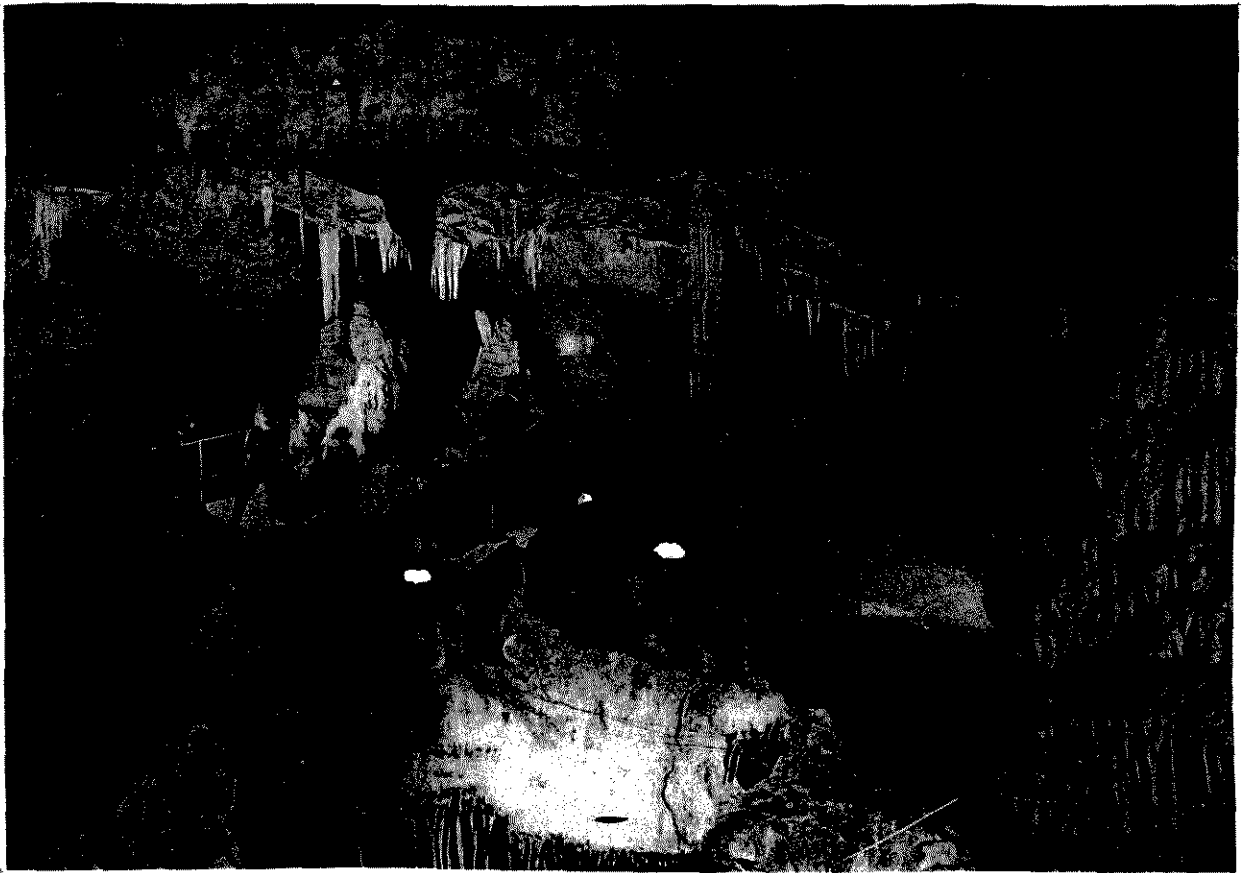
Source: J.W. Pickett and J.D. Alder, *Layers of Time: The Blue Mountains and Their Geology*, Sydney, 1997, p.21.

Figure 1.11 - The Dog Face Rock Landslide near Katoomba (ca. 1931)



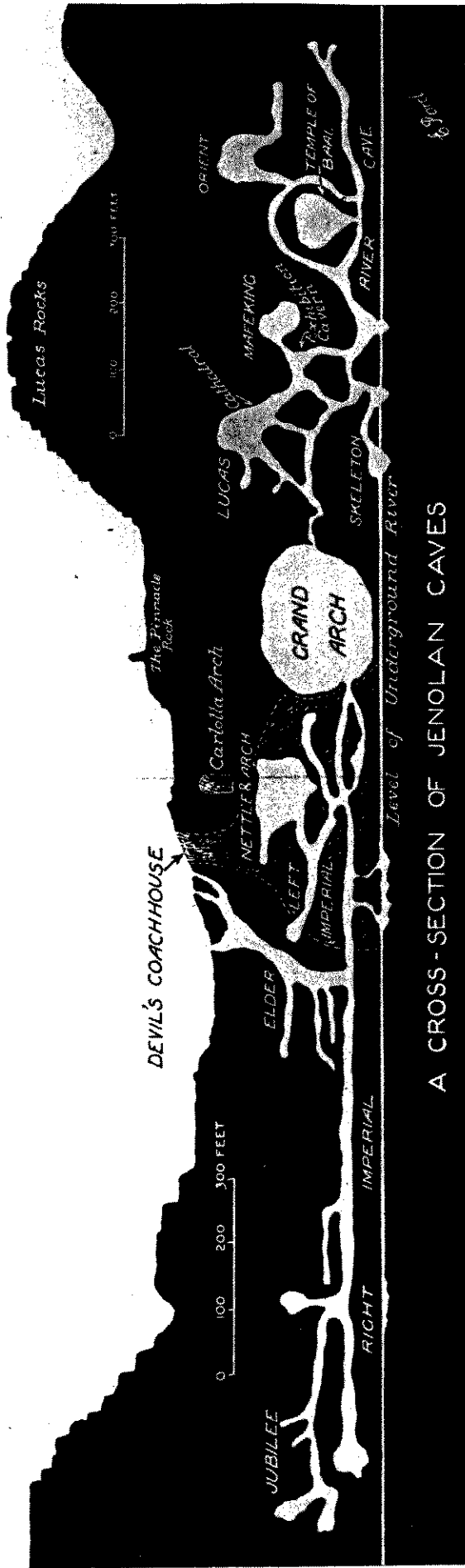
Source: Courtesy of the Blue Mountains Historical Society, Wentworth Falls

Figure 1.12 - Exhibition Chamber, Lucas Cave, Jenolan Caves



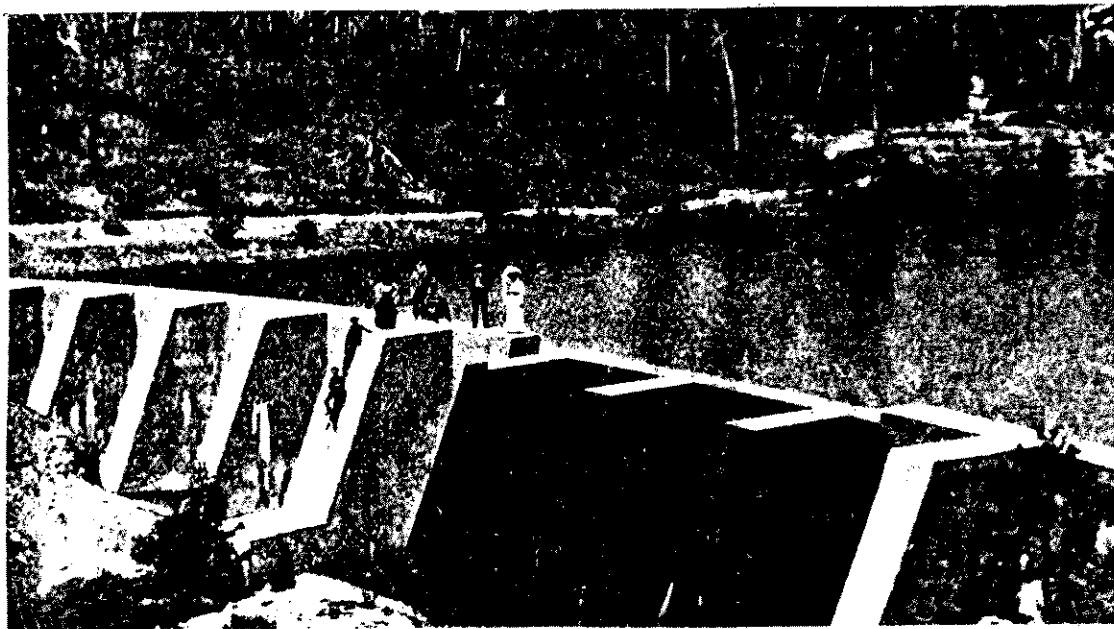
Source: Courtesy of the Blue Mountains City Library, Springwood

Figure 1.13 - Cross Section of Jenolan Caves



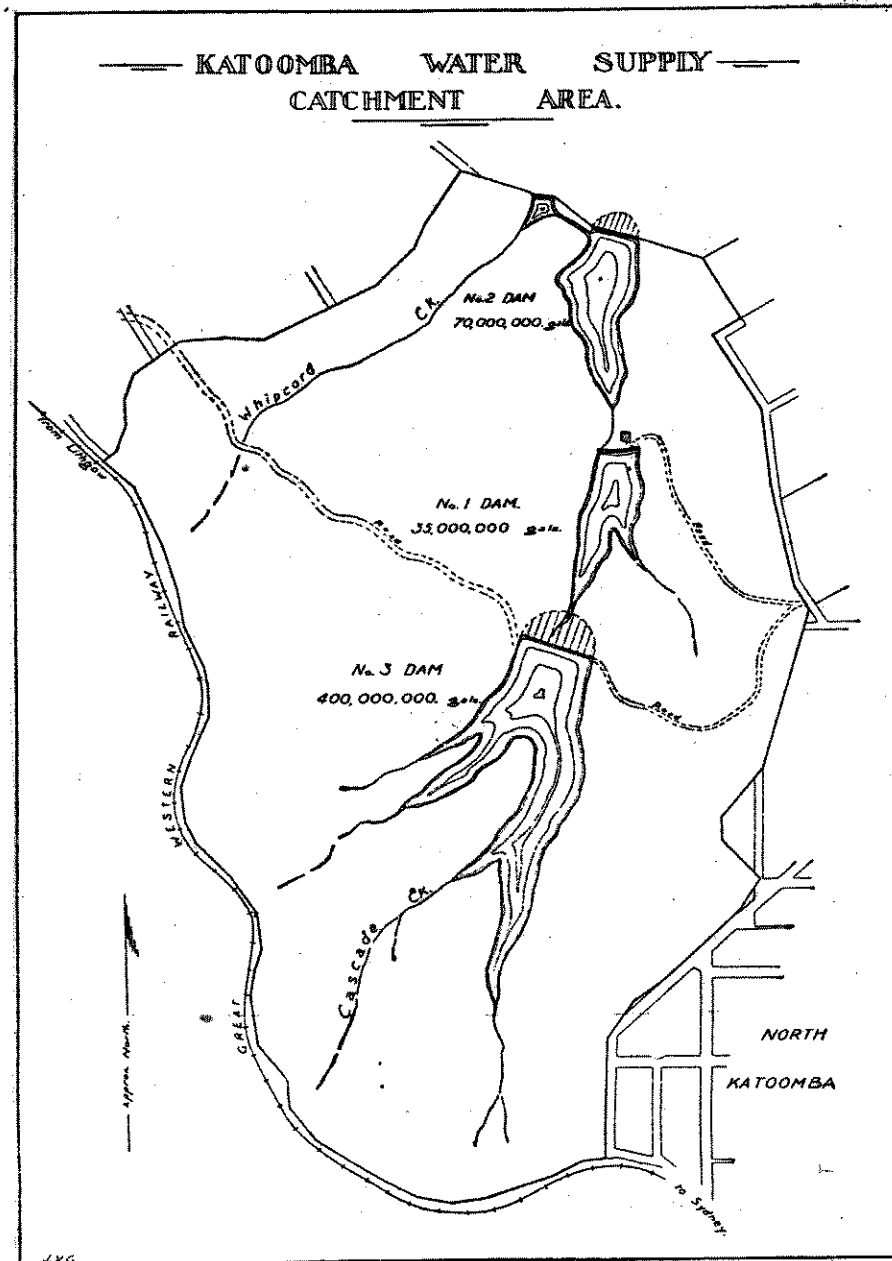
Source: B.T. Dunlop, Jenolan Caves, New South Wales, Australia, Sydney, 1950, npn.

Figure 2.1 - Cascade Creek Dam No.1, Katoomba (ca. 1907)



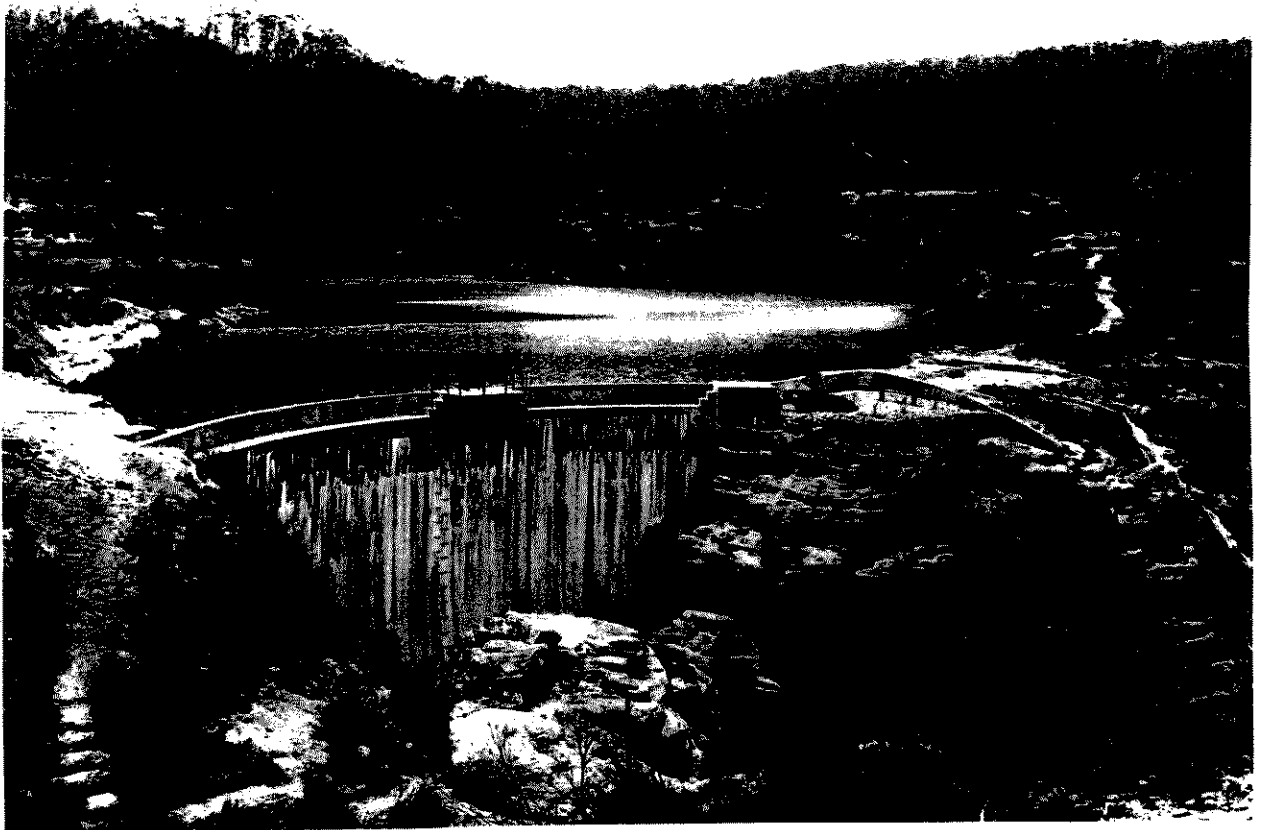
Source: Courtesy of the Blue Mountains Historical Society, Wentworth Falls

Figure 2.2 - Cascade Creek Dams, Katoomba



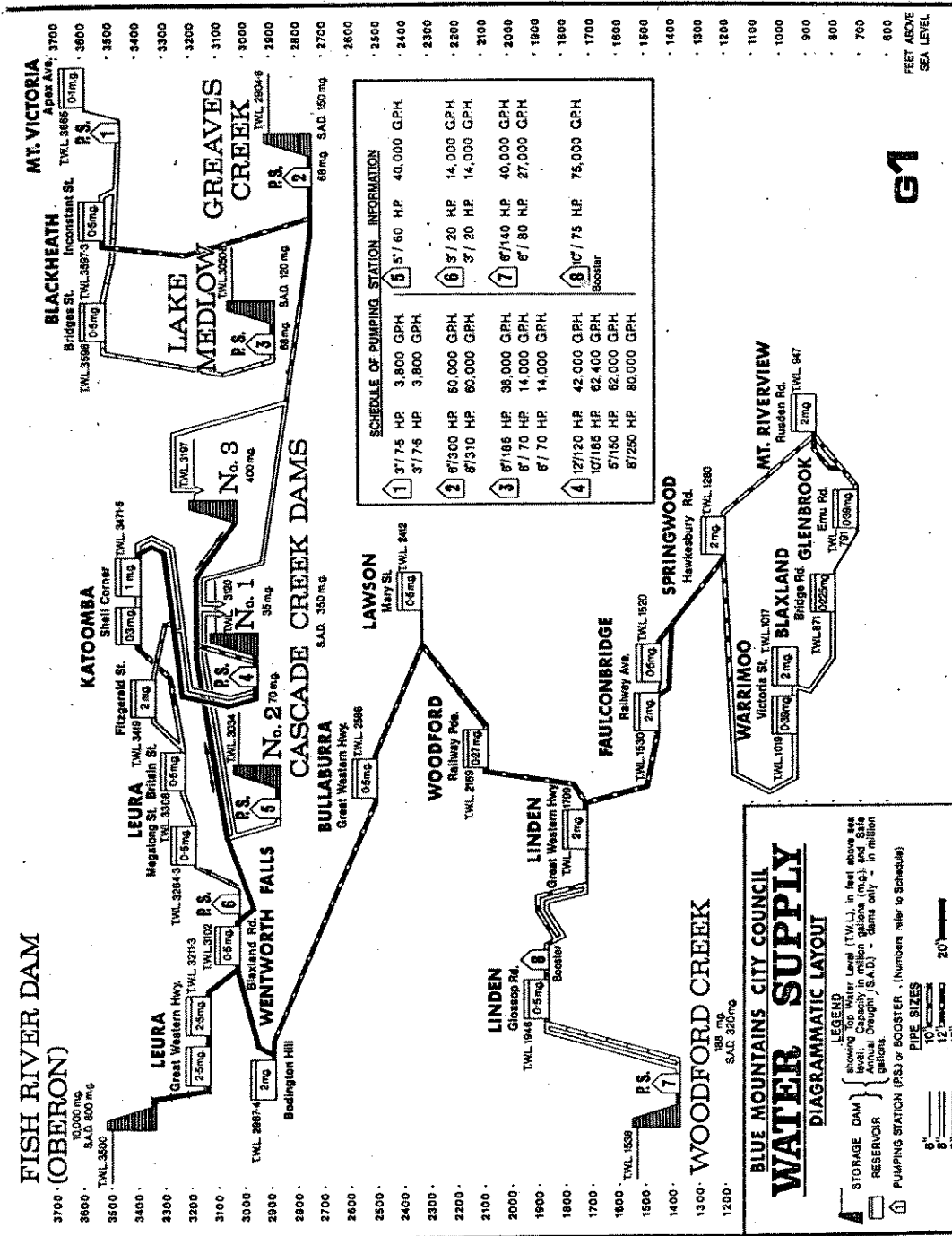
Source: L.G. Kaleski, 'Vegetative Stabilisation of the Katoomba Water Supply Catchment Area', *Journal of the Soil Conservation Society of NSW*, Vol.3, No.1, 1947, p.51.

Figure 2.3 - Lake Medlow Dam (1907)



Source: Public Works Department, Courtesy of the Blue Mountains City Library,
Springwood

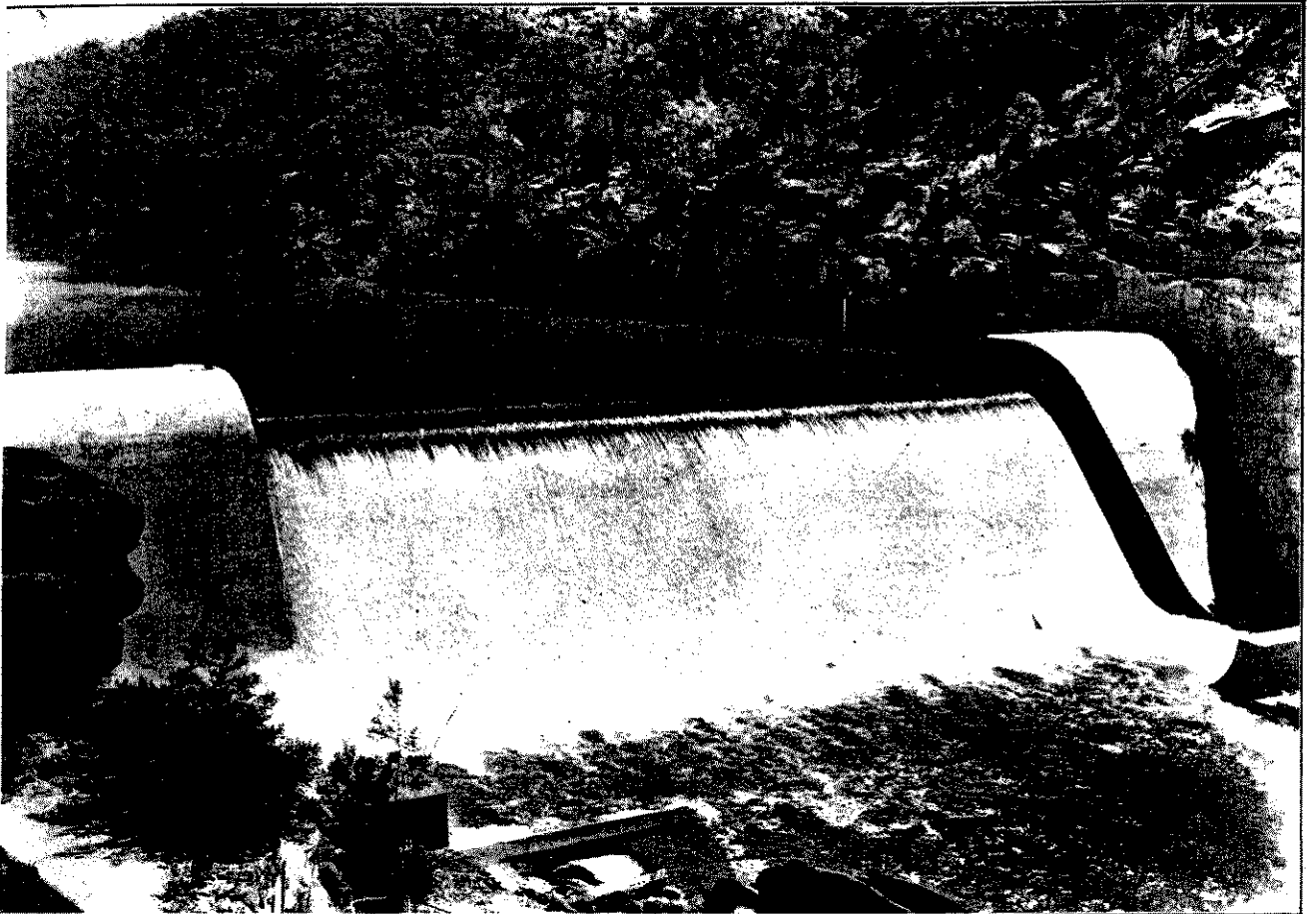
Figure 2.4 - Diagram of Blue Mountains Water Supply (1974)



61

Source: Urban Systems Corporation, Blue Mountains Strategy Plan: Volume Two, Technical Analyses, Sydney, 1974, G.I.

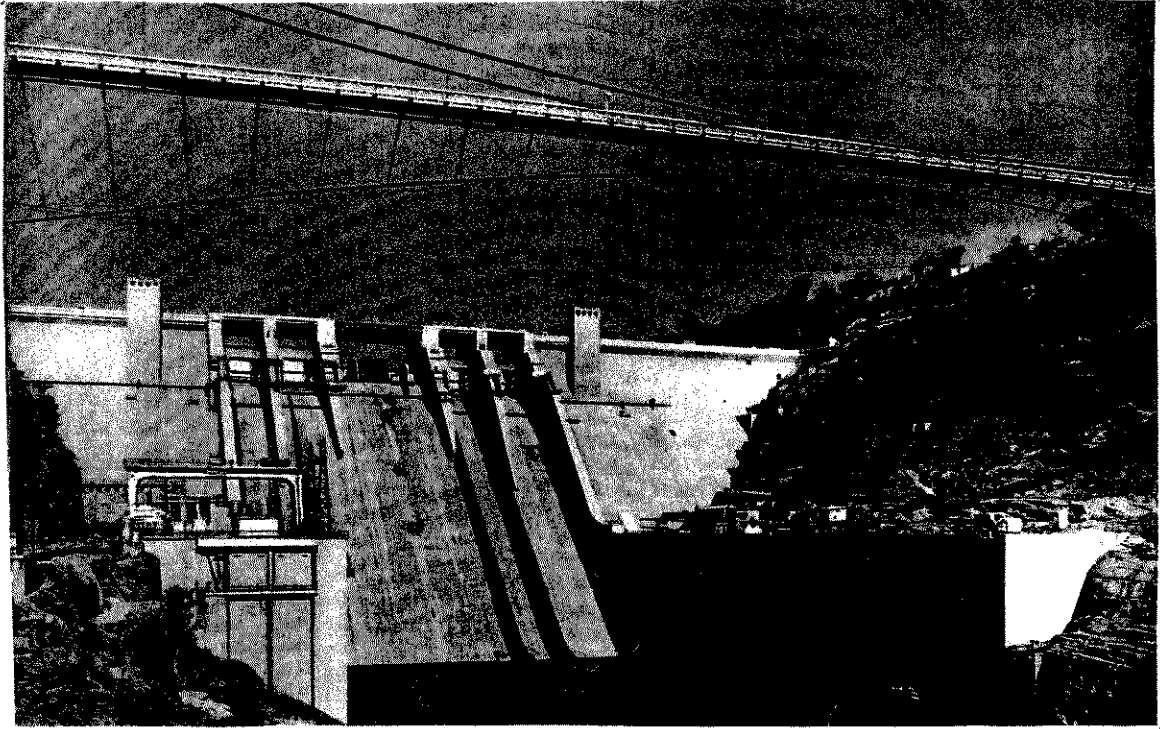
Figure 2.5 - Warragamba Emergency Scheme Weir (1940)



WARRAGAMBA WEIR.

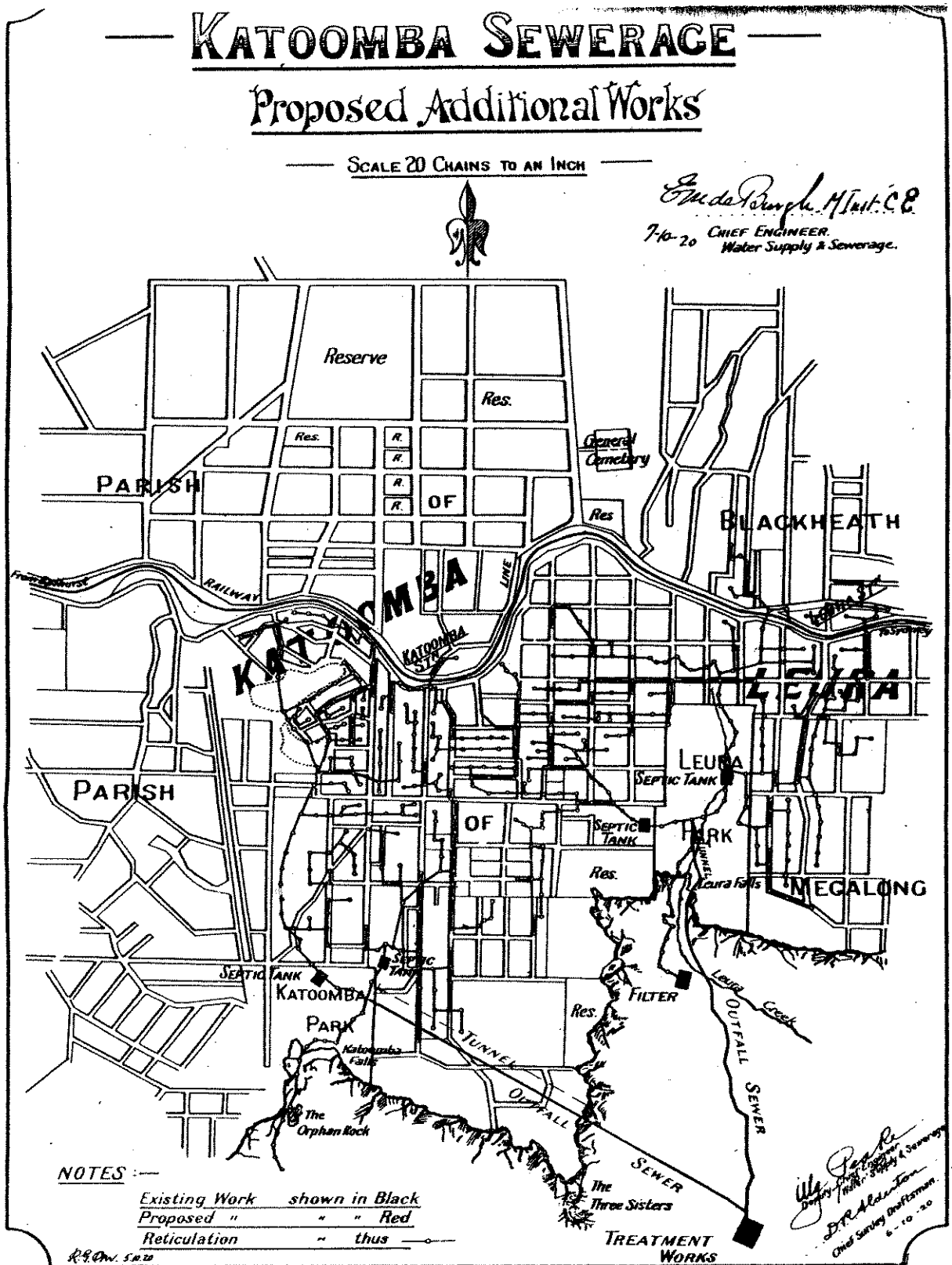
Source: MWSDB Annual Report 1940, in NSWPP, 1941-42, Vol. 1, Part 2, p.732.

Figure 2.6 - Warragamba Dam (1960)



Source: W.V. Aird, The Water Supply, Sewerage and Drainage of Sydney, Sydney, 1961, p.110.

Figure 2.7 - Katoomba Sewerage (ca. 1920)



Source: Parliamentary Standing Committee on Public Works, 'Report on Proposed Amplification of the Sewerage System of the Town of Katoomba', NSWPP, 1921, Vol.4, p.962.

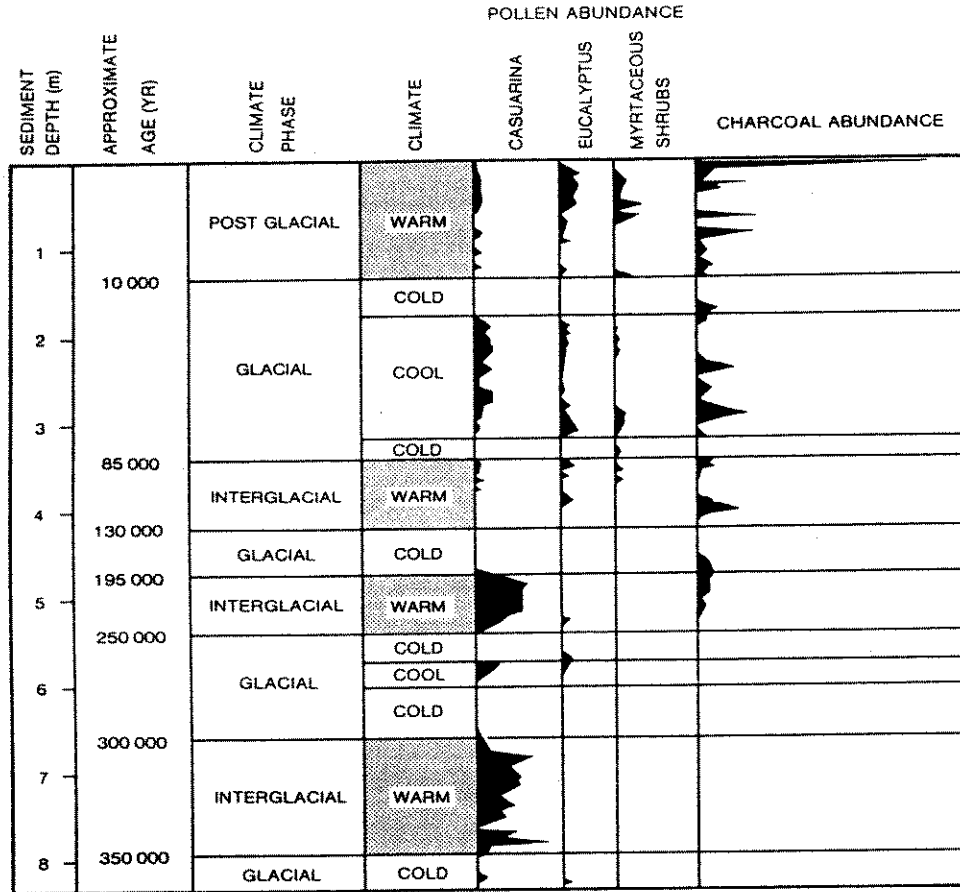
Figure 2.8 - Promotional Photos of Blue Mountains Waterfalls



Typical Mountain Cascades and Waterfalls.

*Source: Official Tourist Guide to Katoomba and Leura, Katoomba, n.d.
(ca. 1912), p.127.*

Figure 3.1 - Pollen and Charcoal Abundance at Lake George, NSW



Source: J.M. Smith, 'The Destruction of Australian Wilderness', in W. Hanley and M. Cooper, *Man and the Australian Environment*, Sydney, 1982, p.100.

Figure 3.2 - Newspaper Advertisements Encouraging Women in the Blue Mountains to Use More Electricity

Begin to be Thrifty NOW!



SAVE MONEY
by using **ELECTRICITY**

Take care of the pence, and the pounds will take care of themselves. Here is one way in which you may be thrifty—install electrical appliances amounting to 2,000 watts, ask to be placed on the Council's No. 1 DOMESTIC TARIFF and watch your account diminish; the more current you use, the cheaper it becomes—as low as ONE PENNY PER UNIT.

Call at the Town Hall, ring Kat. 55, or ask the meter reader for particulars.

USE MORE ELECTRICITY.



Madame has time to spare in the evenings. How does she manage it? By making **ELECTRICITY** do most of her work—she has an **IRON, JUG TOASTER, VACUUM CLEANER** and other appliances, all **UNDER THE COUNCIL'S No. 1 DOMESTIC TARIFF** with current as low as **ONE PENNY PER UNIT**. It's worth looking into.

Ring Kat. 55, drop a note to the Town Clerk, or Call at the Town Hall for advice.

USE MORE ELECTRICITY.

WASH DAYS ARE HAPPY DAYS




We are quite serious—washing day **CAN** be made happy. How? By putting an electric washer in place of those tubs, and letting the machine do the work. In addition to the washer, try other things electric—**JUG, IRON, RADIATOR, TOASTER**, any old thing you like. Ask to be placed on the Council's No. 1 DOMESTIC TARIFF and **WATCH YOUR ACCOUNT DIMINISH**.

You may enjoy this tariff; ring Kat. 55, or call at the Town Hall and make enquiries.

USE MORE ELECTRICITY.

"You were right, Mother!"



I've saved money

by using **ELECTRICITY**

The futility of this remark is apparent. Of course, Mother is right—she knows how to save money by using electricity, and using it in the right way—under the Council's No. 1 DOMESTIC TARIFF with current as low as ONE PENNY PER UNIT. Follow the example of this young housekeeper—fill your home with electrical appliances and THEN ask to be placed on THIS WONDERFUL TARIFF.

CALL AT THE TOWN HALL AND ASK ABOUT IT.

USE MORE ELECTRICITY.



Here is happiness personified. Married! Yes, but still happy. And why not? A pipe well aglow and the paper, while Madame has her knitting and a book, but, above all, they have a wonderful supply of electricity. You can have the same, with current as low as ONE PENNY PER UNIT, by installing a few appliances under the Council's No. 1 DOMESTIC TARIFF.

Ring Kat. 55, Call at the Town Hall, or ask the Meter Reader for Particulars.

USE MORE ELECTRICITY.

...here's what I'm writing to the Electricity Department

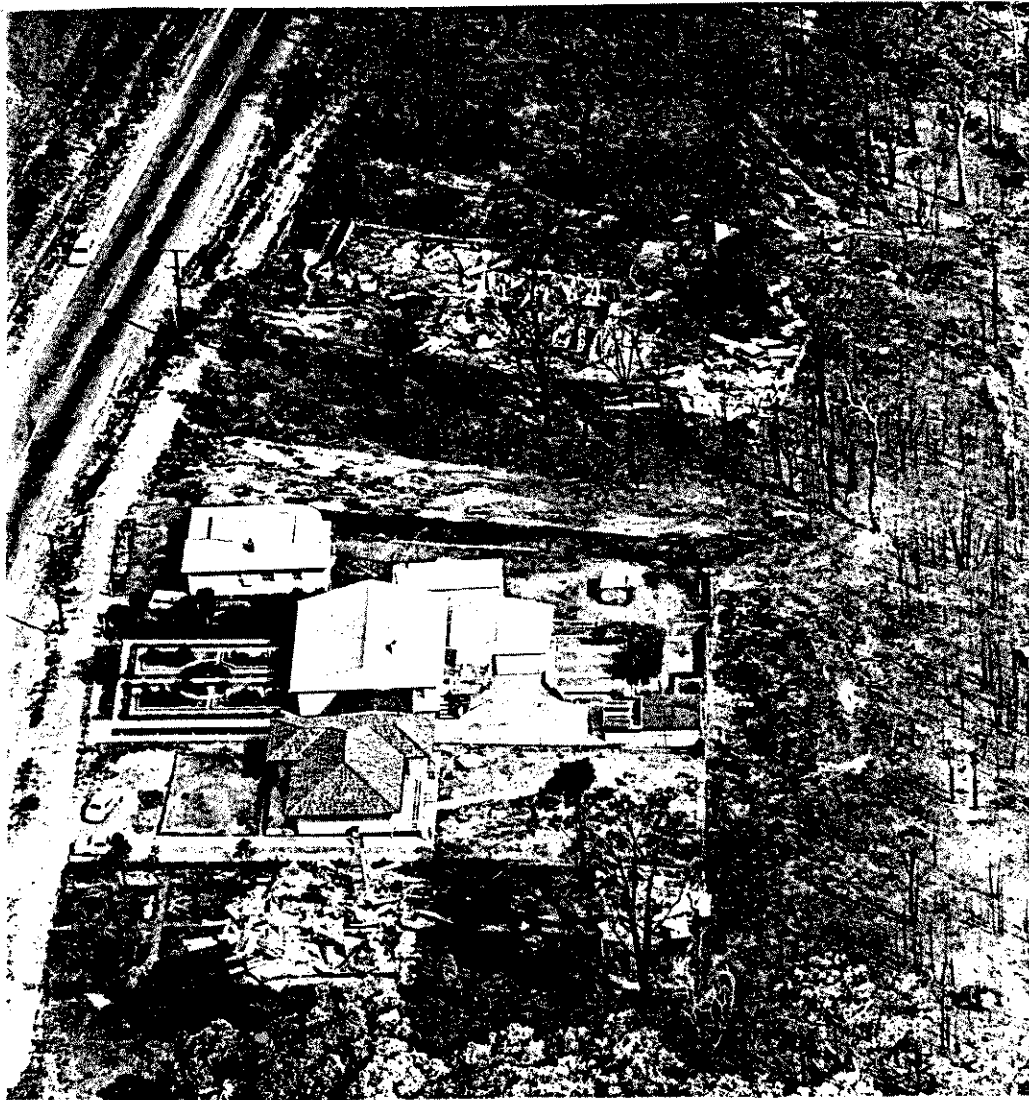


Some people will tell you that a young bride has no sense; don't you believe them. Do you know that before I had been keeping house for three months, I had reduced the electricity account by almost half? Such a nice young fellow came to the house, so I bought an **IRON, JUG and RADIATOR**—I couldn't resist him. When my husband heard about it he was furious. BUT when I told him that you had put us on your **WONDERFUL No. 1 DOMESTIC TARIFF**, with current as low as **ONE PENNY PER UNIT**, he calmed down. I am advising all my friends to get a few electrical appliances, and ask to be placed on this **CHEAP TARIFF**. I think it is **PERFECTLY MARVELLOUS!**

Call at the Town Hall, ask the Meter Reader, or Ring Kat. 55 for further information.

USE MORE ELECTRICITY.

Figure 3.3 - Houses Destroyed by Bushfires at Warrimoo, 1968



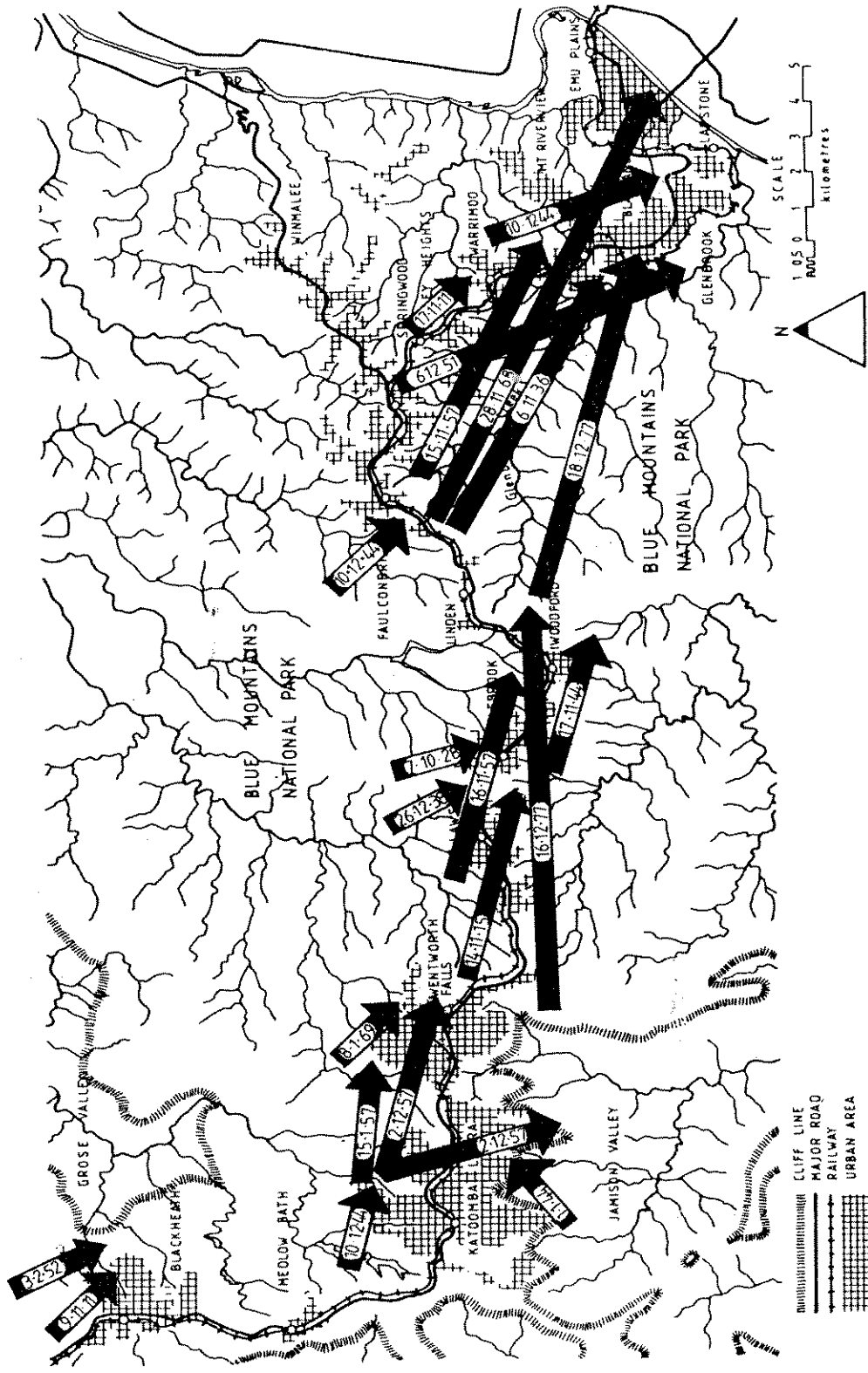
Source: Sydney Morning Herald, Courtesy of the Blue Mountains Historical Society, Wentworth Falls

Figure 3.4 - Bushfire Fighters, Springwood, 1968



Source: Sydney Morning Herald, Courtesy of the Blue Mountains Historical Society, Wentworth Falls

Figure 3.5 - Approximate Paths of Major Bushfires in the Blue Mountains Which Caused Urban Property Damage (1911-1988)



Source: C.J. Cunningham, 'Recurring Natural Fire Hazards: A Case Study of the Blue Mountains, New South Wales, Australia, Applied Geography, Vol.4, No.1, 1984, p.20.

Figure 4.1 - Advertisement Promoting the Mountain Air (1882)


The Royal Hotel,
 SPRINGWOOD,
 BLUE MOUNTAINS.
 T. E. BOLAND, Proprietor.

1,000 FEET ABOVE THE LEVEL OF THE SEA.

The Air is pure, light, and dry,
and in no part of the world is
the climate more invigorating.

This house was erected specially to afford
Visitors all the comforts of a first-class Hotel;
is within easy distance of the
"Sassafras," or "Flying Fox Gully,"
and many other sights well worth seeing.

PRIVATE TABLES AND
APARTMENTS.

Charges Moderate!

Charges for Private Apartments
as per Agreement.

ALL VISITORS WILL RECEIVE THE UTMOST ATTENTION

Trains to and from Sydney six times
a day. Special Cheap Trains on
Saturdays.
Tickets—1st Class, 6s.; 2nd Class, 4s.,
available until the following Monday
week.

Source: J.E.M. Russell, *Pictorial Guide to the Blue Mountains of NSW etc.*, Sydney, 1882, p.23..

Figure 5.1 - Railway Sleepers Being Loaded at Faulconbridge (1922)



Source: Courtesy of the Blue Mountains City Library, Springwood

Figure 5.2 - Cartoon on Wildflower Picking



Source: *Blue Mountains Advertiser*, 4 September 1952 p.9.

Figure 5.3 - Sid Bellingham Advertisement (1888)

KATOOMBA ADVERTISEMENTS.

Shooting! Shooting!

SID

Desires to inform Sportsmen that he accompanies shooting Parties; providing tent, blankets, provisions, etc. when required; and will, if desired, ride with parties from Katoomba to the Caves, shooting en route.

Visitors provide their own horses, and pack-horse if necessary.

The following is a list of the game obtainable:—

Scrub Wallabies, Rock Wallabies, Wombats, Tiger Cats, Native Cats, Wallaroos, Lyre-birds, Satin-birds, Cockatoos, Parrots, &c.

Sid has made arrangements at the neighbouring farms for those requiring good Hare and Possum shooting.

Platypus Shooting on the rivers, where there is also, in season, good fishing for

Perch, Black-brim, Black-fish, Eels, Fresh Water Herrings, etc.

TERMS:

15s. per day each person. This includes meals, use of tent and blankets, attendance, etc.

Single Person, 30s. per day.

Sid will not accompany more than three persons at a time, as it is impossible to insure good sport for more than this number.

Address:—"SID," c/o. F. C. Goyder, Esq., Katoomba.

Hints o Shooting Parties.

Gentlemen wishing for good sport must be prepared to rough it, and those requiring frog, must provide their own.

A pair of strong boots, with nails in, will be found the most useful. Blucher boots recommended.

A cartridge-extractor and whistle combined, will save trouble in extracting empty cases, and the whistle is very useful for signalling in the bush.

A pair of stout leggings, a good knife and belt, are indispensable.

The shot chiefly used is No. 1, No. 2, and No. 3. Chilled shot is the best, and a few No. 10 cartridges are useful for gentlemen wishing to get small specimens.

Don't go long distances up country when there is bush country, never get shot over, within reach of the mountain railway line.


**Figure 5.4 - Sports Hunting in the Megalong Valley, Blue Mountains
(ca. early 1900s)**



Source: St. Michael-Podmore, *Rambles and Adventures in Australasia, Canada, India, etc.*, London, 1909, p.222.

Figure 5.5 - Advertisement for Weedkiller to Eradicate Blackberry


NOW is the time to **KILL**
BLACKBERRY



'BUTOXONE' 80
STRAIGHT 2, 4, 5-T
 NON-POISONOUS — NON-INFLAMMABLE
 — NON-CORROSIVE

... used by Government Departments.
 'Butoxone' 80 is a hormone weedkiller which has proved outstanding for eradicating Blackberry, Woody Perennial and Lantana. It is also effective for the control of Gorse and Sweet Briar.

Available from your usual supplier.

A DEPENDABLE PLANT  PROTECTION PRODUCT
ICI CHEMICALS AND INDUSTRIES LTD. BRISTOL, ENGLAND & NEW ZEALAND LIMITED

Source: Blue Mountains Advertiser, 25 March 1954 p.4.

Figure 5.6 - Dairy Farm near Katoomba (ca. 1910)



W. H. SMITH'S Model Dairy Farm, Katoomba.

Source: Courtesy of the Blue Mountains Historical Society, Wentworth Falls

Figure 5.7 - Bullock Team in the Blue Mountains (ca. 1920)



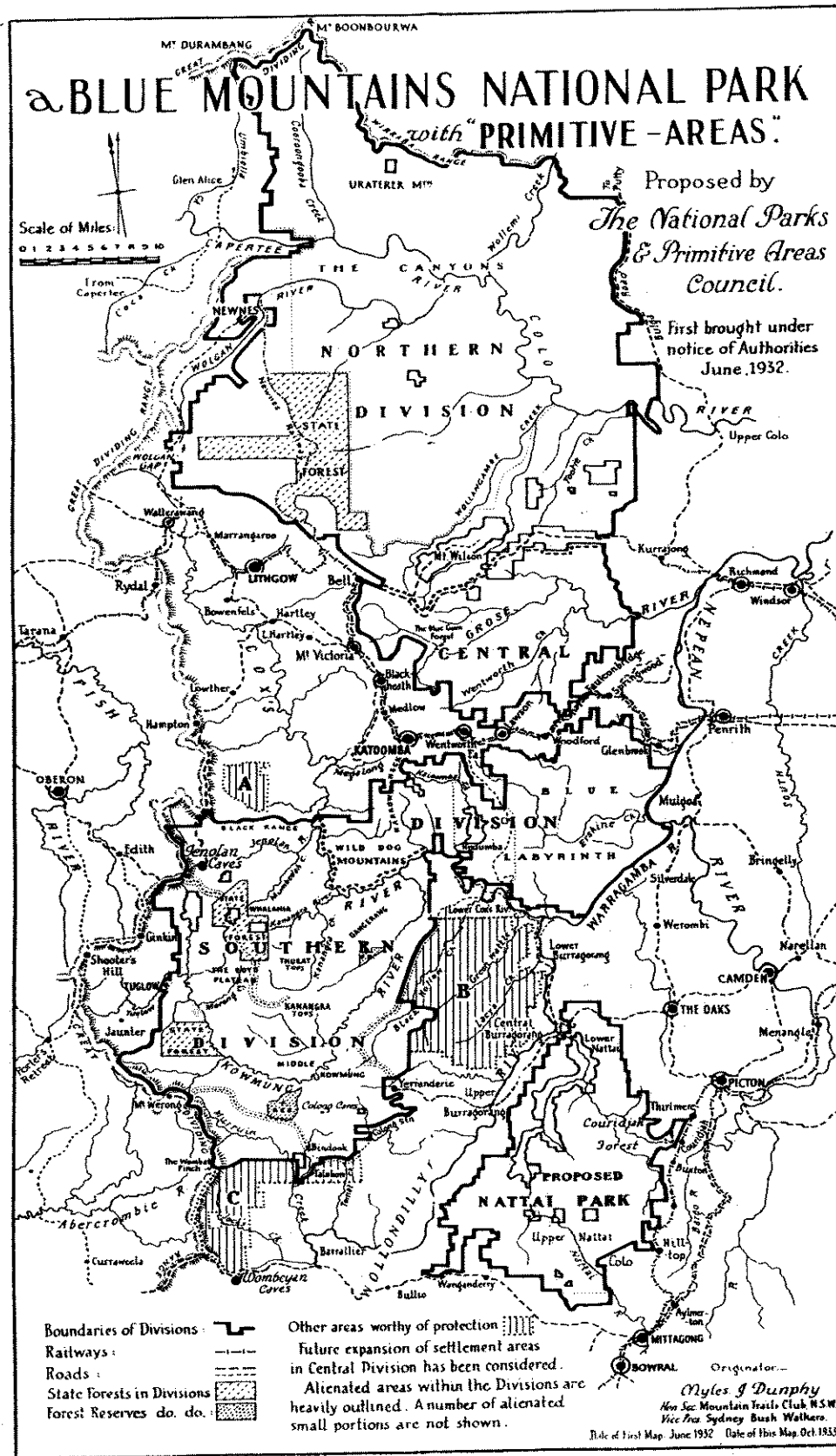
Source: Courtesy of the Blue Mountains City Library, Springwood

**Figure 5.8 - Cart Load of Rabbit Carcasses, Megalong Valley
(ca. early 1900s)**



Source: Courtesy of the Blue Mountains City Library, Springwood

Figure 5.9 - Myles Dunphy's Proposed Blue Mountains National Parks (1932)



Source: Katoomba Daily, 24 August 1934, Special Supplement, p. 1.



UNIVERSITY OF SYDNEY LIBRARY



000000607331457