

Figure A49. Water table in the Wakool area in March 1976 and piezometers with data available for that time from which the water table is generated. (Total number of piezometers: 448)

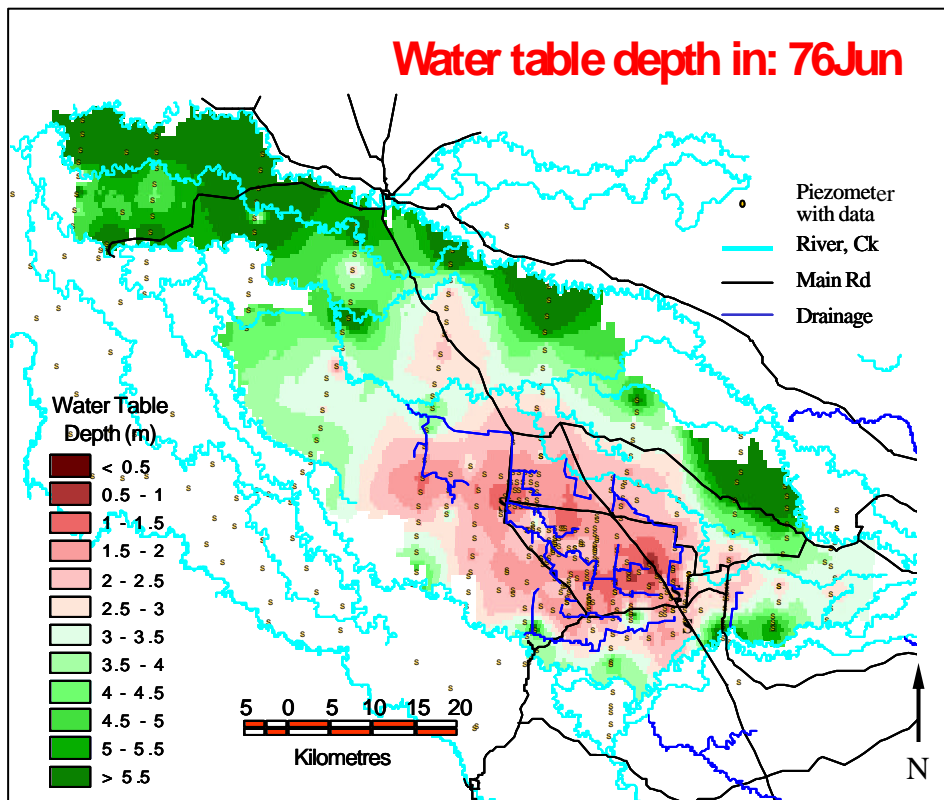


Figure A50. Water table in the Wakool area in June 1976 and piezometers with data available for that time from which the water table is generated. (Total number of piezometers: 453)

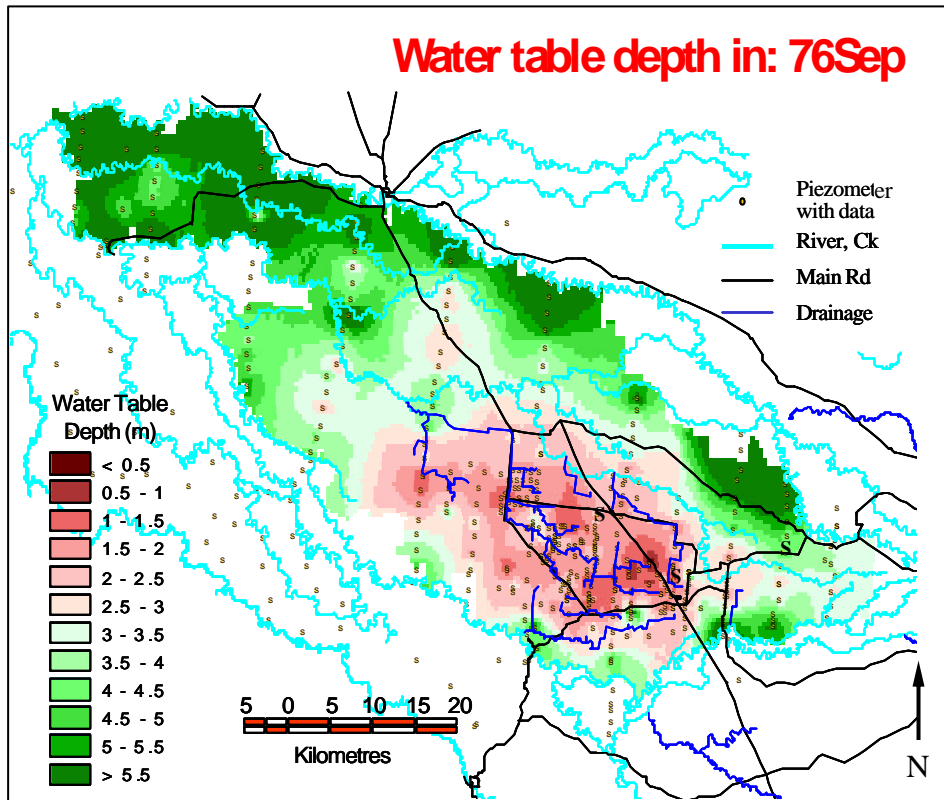


Figure A51. Water table in the Wakool area in September 1976 and piezometers with data available for that time from which the water table is generated. (Total number of piezometers: 455)

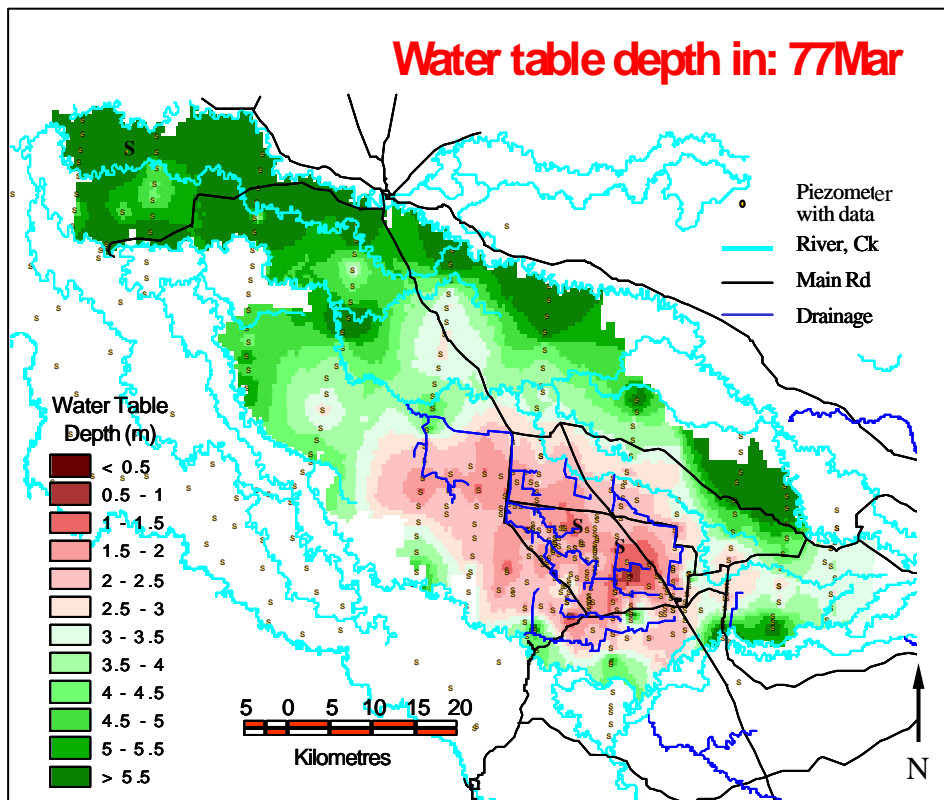


Figure A52. Water table in the Wakool area in March 1977 and piezometers with data available for that time from which the water table is generated. (Total number of piezometers: 427)

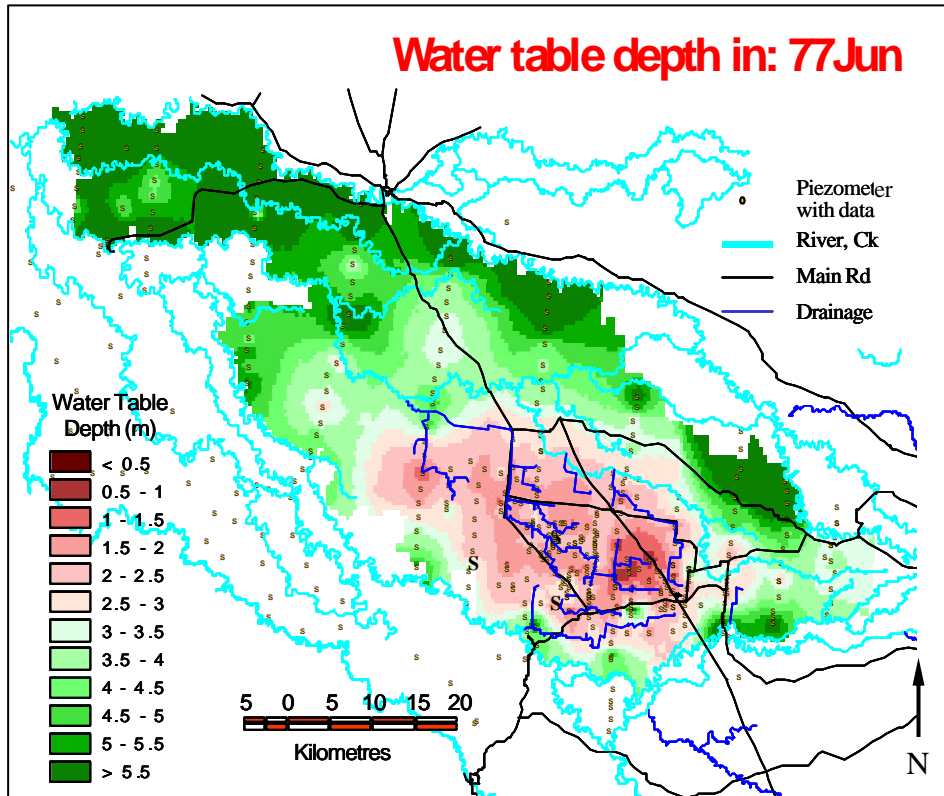


Figure A53. Water table in the Wakool area in June 1977 and piezometers with data available for that time from which the water table is generated. (Total number of piezometers: 445)

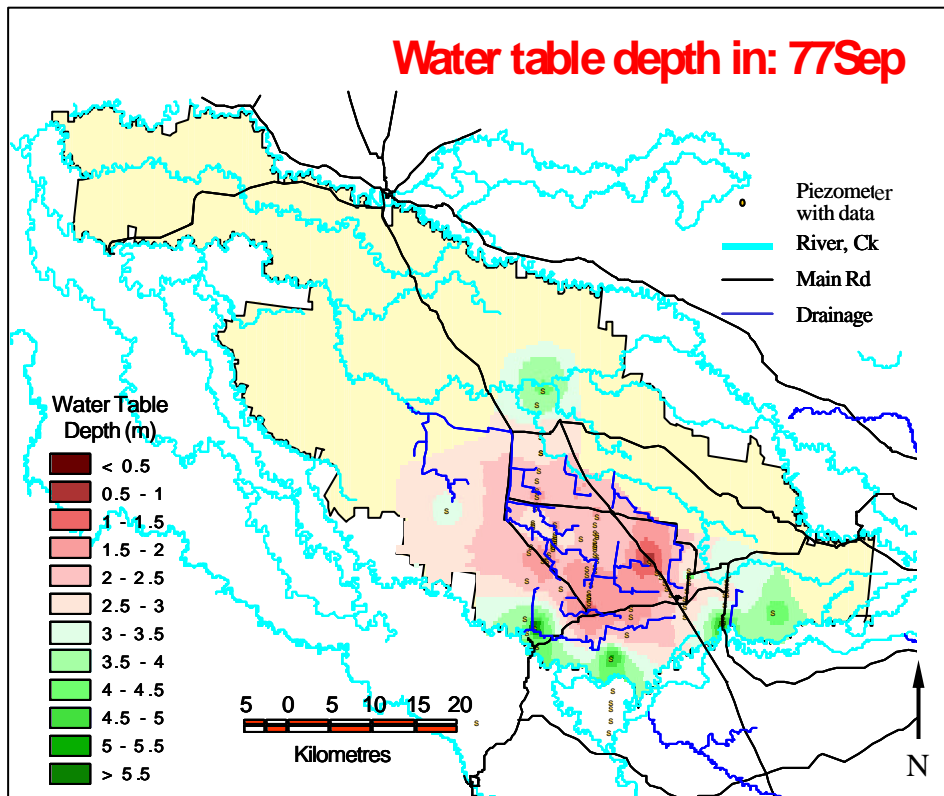


Figure A54. Water table in the Wakool area in September 1977 and piezometers with data available for that time from which the water table is generated. (Total number of piezometers: 104)

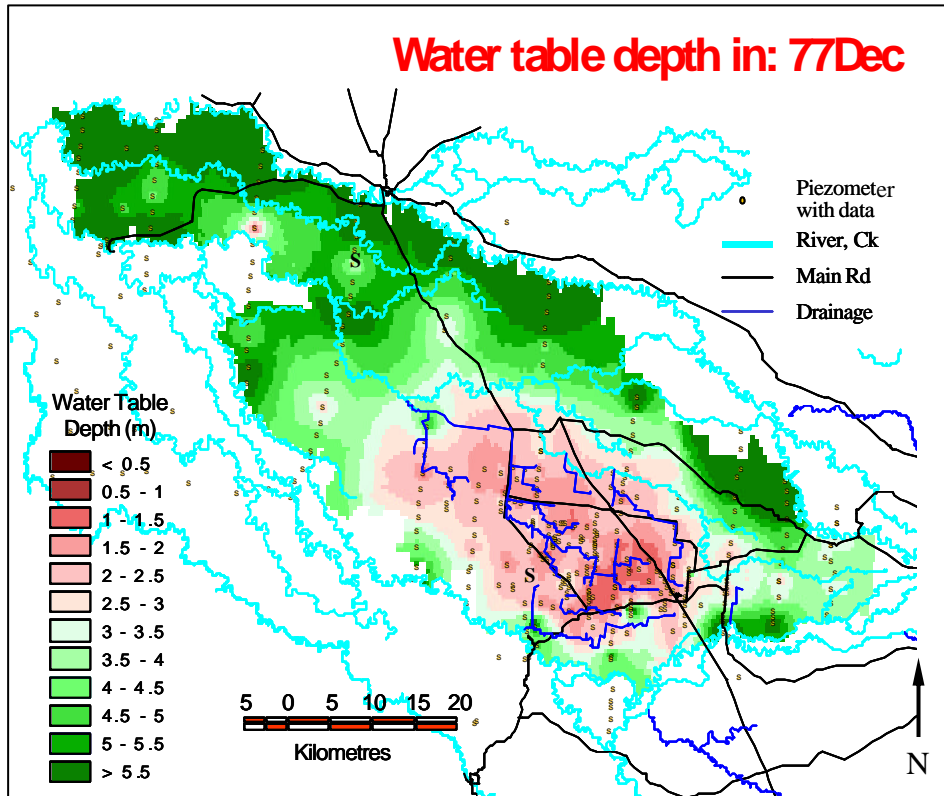


Figure A55. Water table in the Wakool area in December 1977 and piezometers with data available for that time from which the water table is generated. (Total number of piezometers: 382)

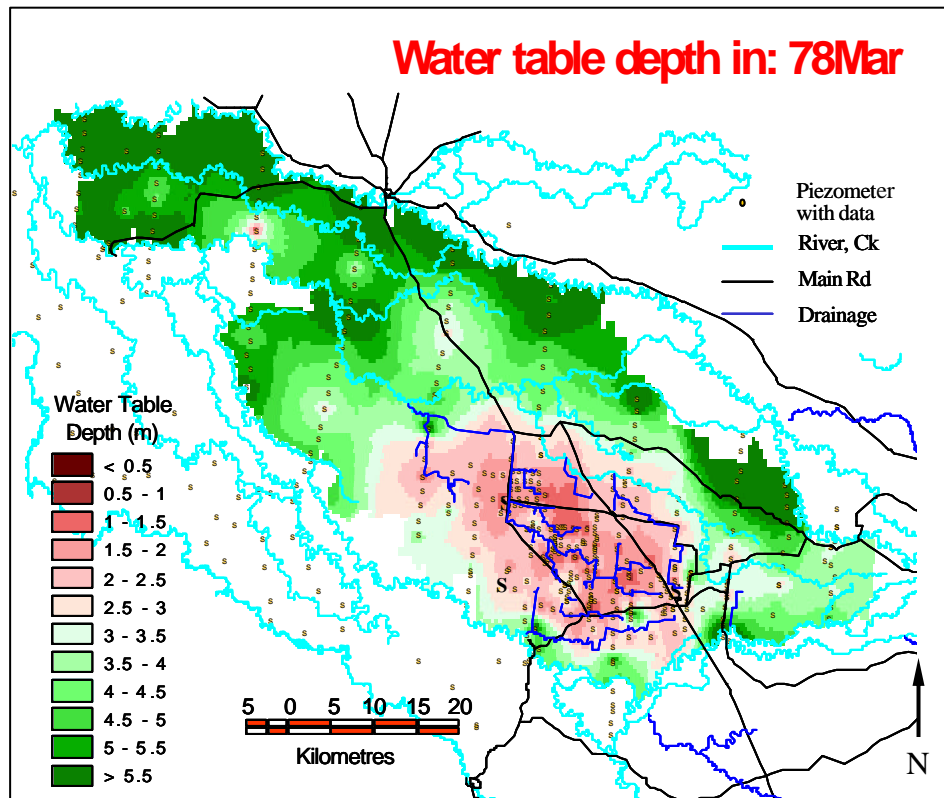


Figure A56. Water table in the Wakool area in March 1978 and piezometers with data available for that time from which the water table is generated. (Total number of piezometers: 450)

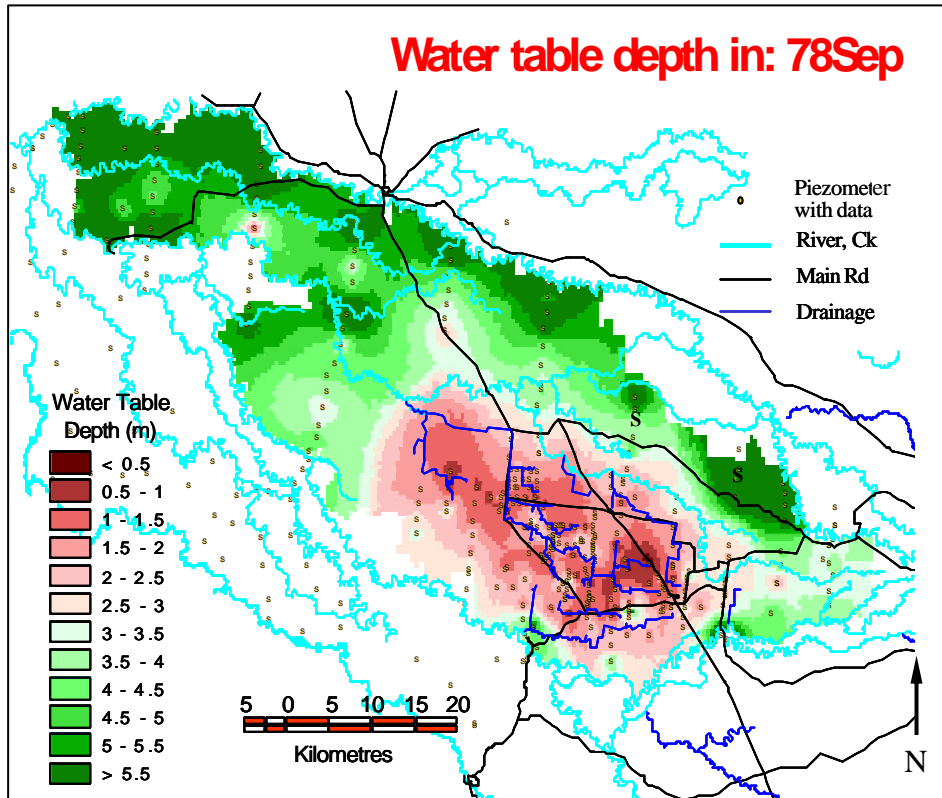


Figure A57. Water table in the Wakool area in September 1978 and piezometers with data available for that time from which the water table is generated. (Total number of piezometers: 431)

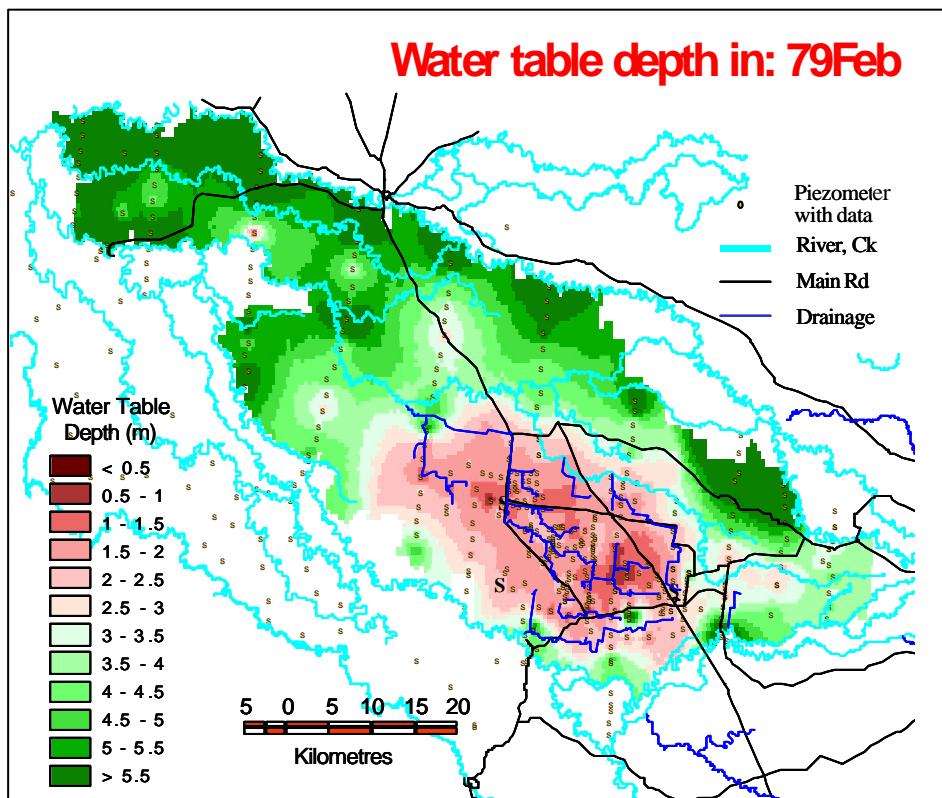


Figure A58. Water table in the Wakool area in February 1979 and piezometers with data available for that time from which the water table is generated. (Total number of piezometers: 482)

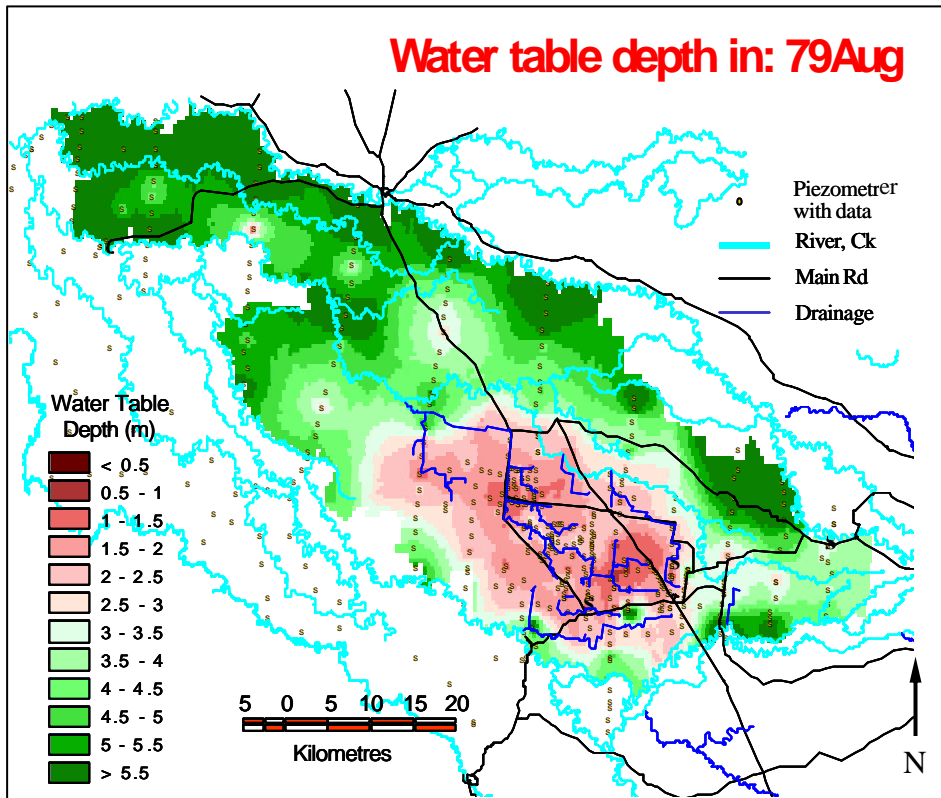


Figure A59. Water table in the Wakool area in August 1979 and piezometers with data available for that time from which the water table is generated. (Total number of piezometers: 510)

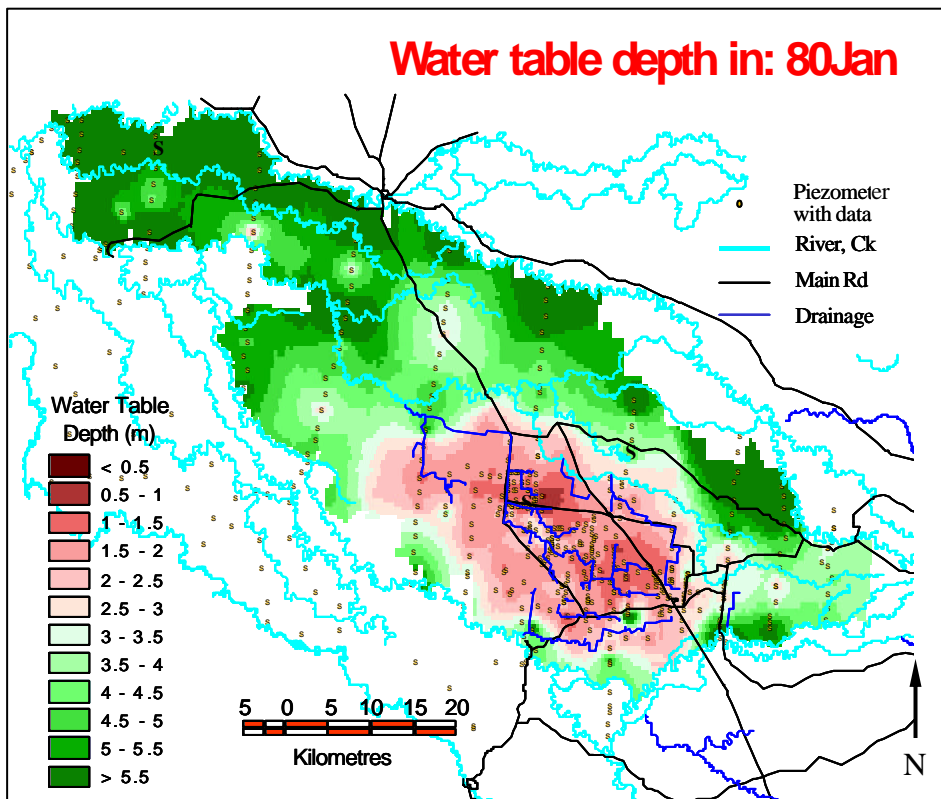


Figure A60. Water table in the Wakool area in January 1980 and piezometers with data available for that time from which the water table is generated. (Total number of piezometers: 544)

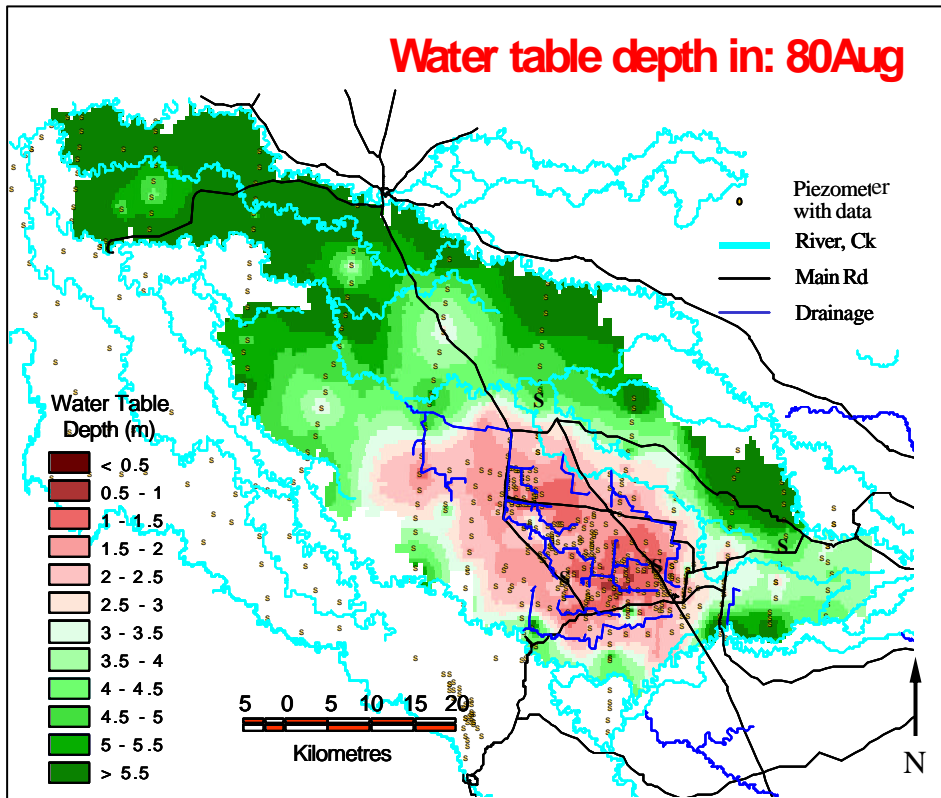


Figure A61. Water table in the Wakool area in August 1980 and piezometers with data available for that time from which the water table is generated. (Total number of piezometers: 636)

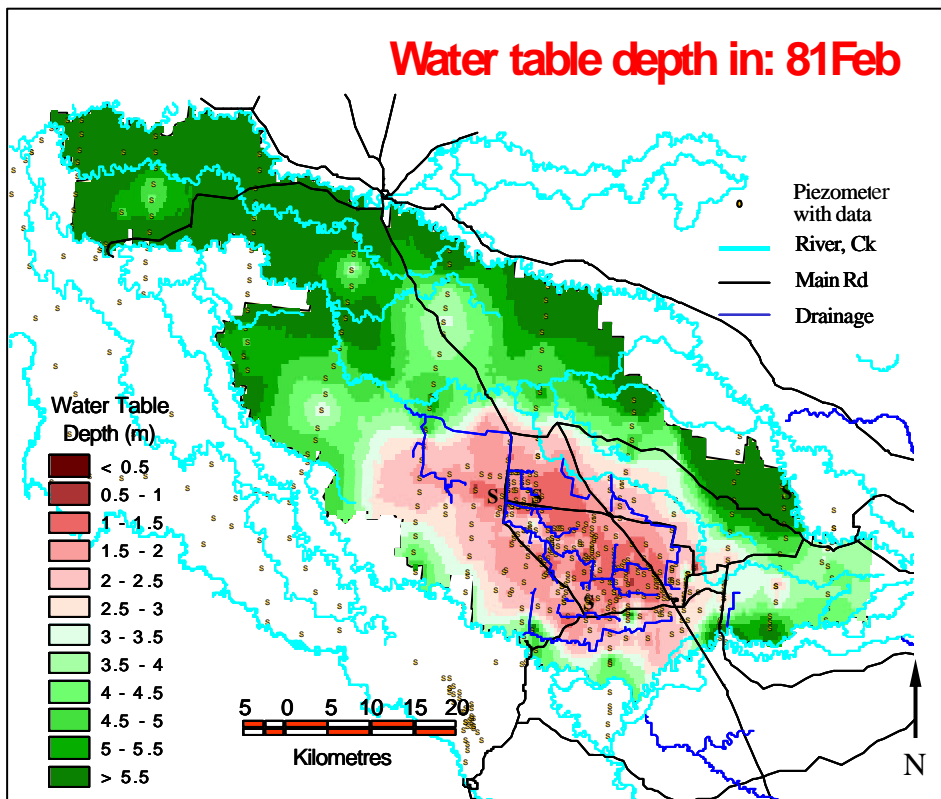


Figure A62. Water table in the Wakool area in February 1981 and piezometers with data available for that time from which the water table is generated. (Total number of piezometers: 645)

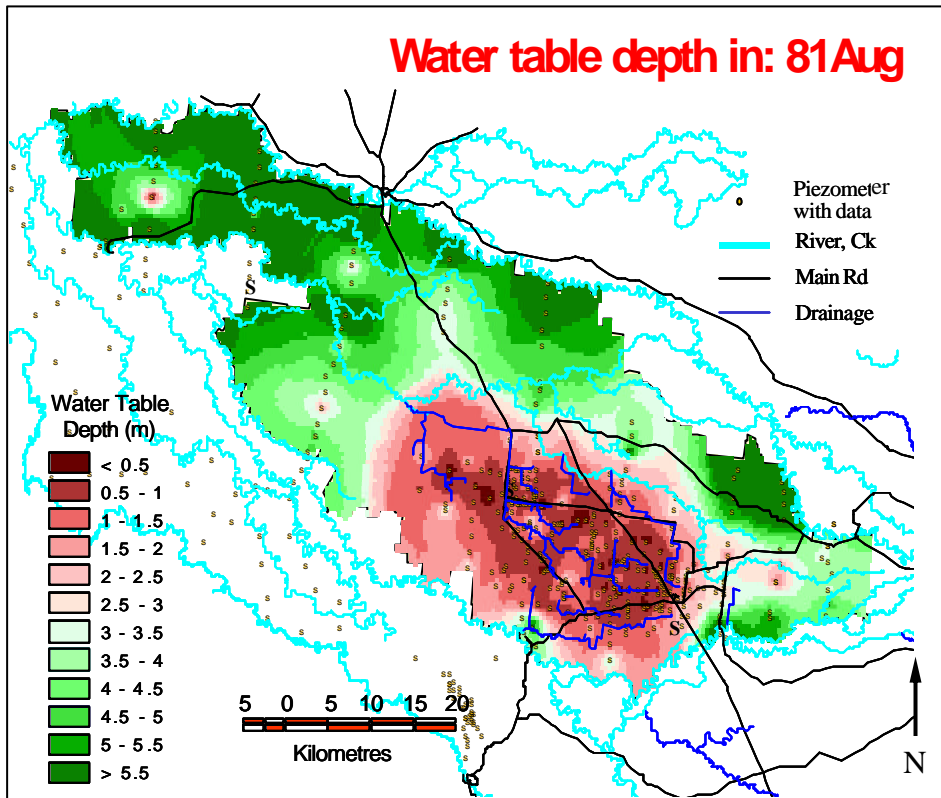


Figure A63. Water table in the Wakool area in August 1981 and piezometers with data available for that time from which the water table is generated. (Total number of piezometers: 521)

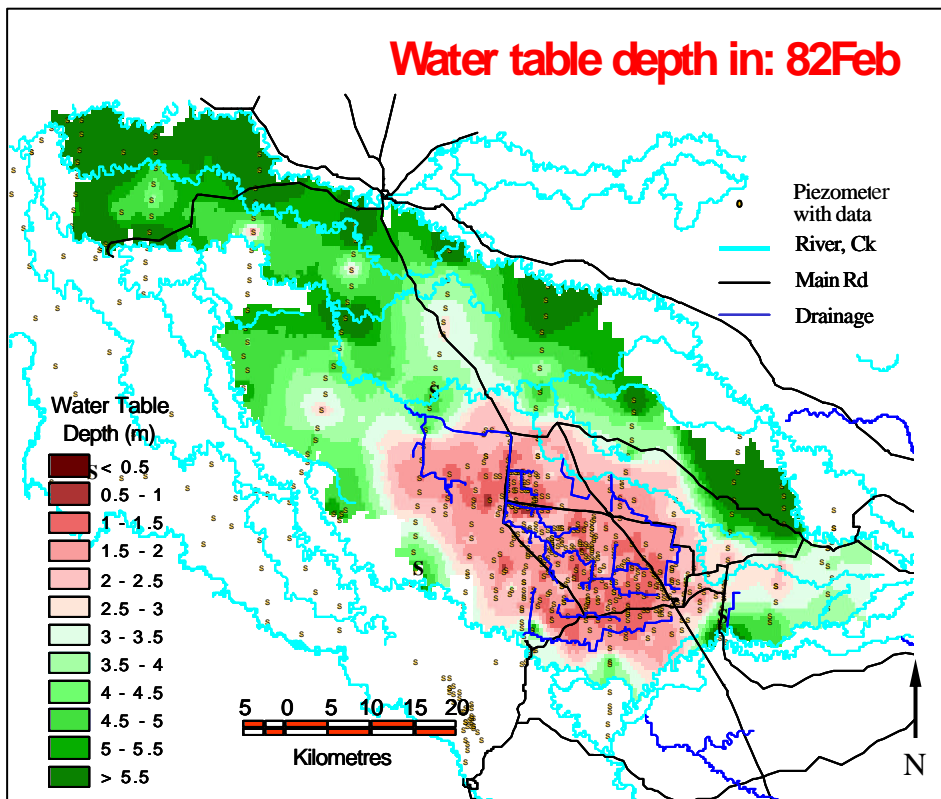


Figure A64. Water table in the Wakool area in February 1982 and piezometers with data available for that time from which the water table is generated. (Total number of piezometers: 712)



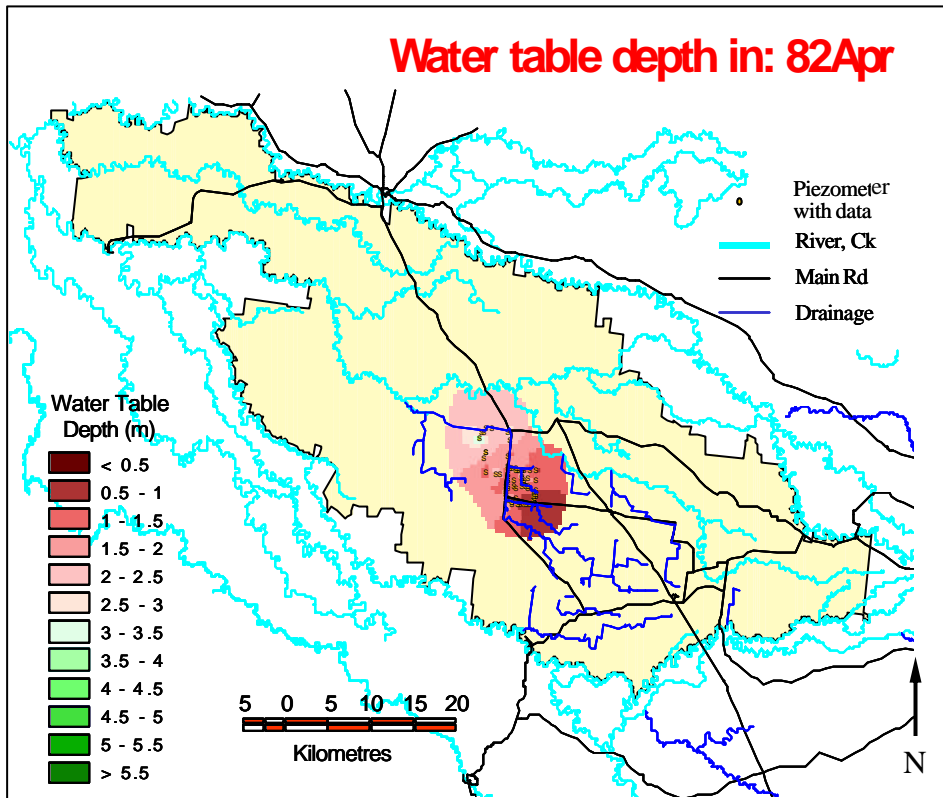


Figure A65. Water table in the Wakool area in April 1982 and piezometers with data available for that time from which the water table is generated. (Total number of piezometers: 92)

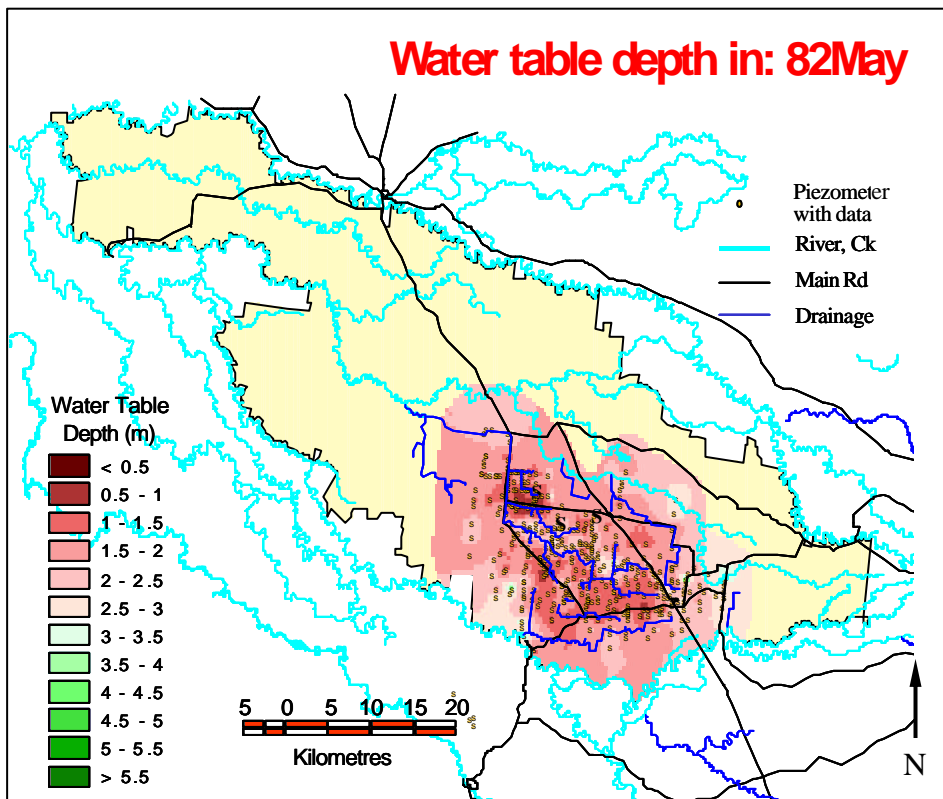


Figure A66. Water table in the Wakool area in May 1982 and piezometers with data available for that time from which the water table is generated. (Total number of piezometers: 424)

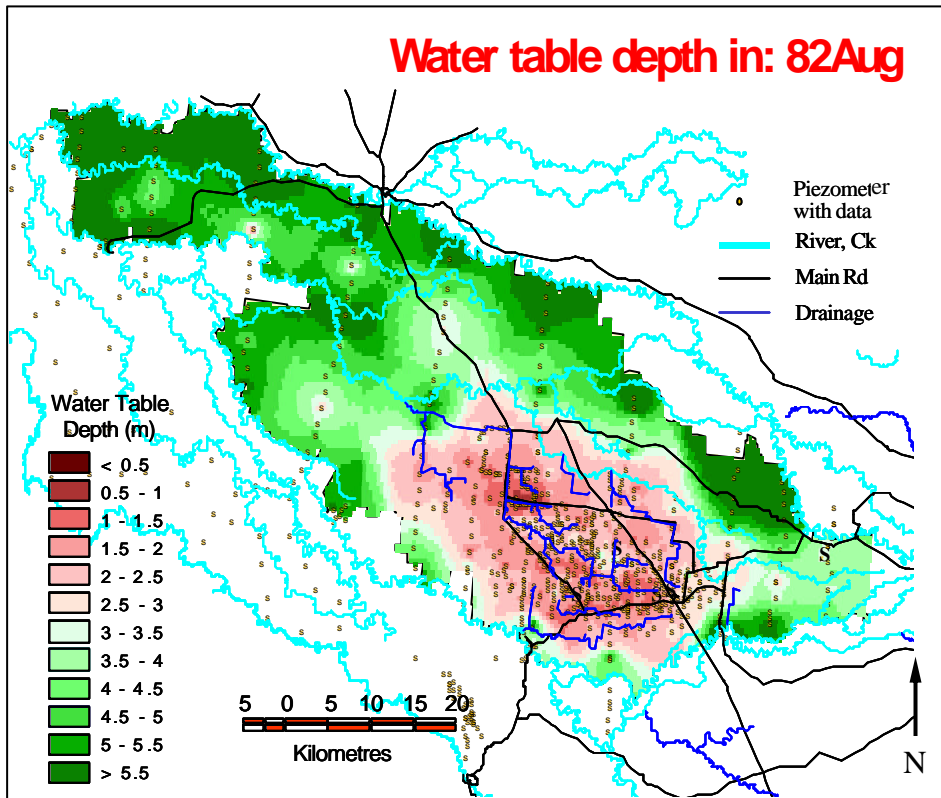


Figure A67. Water table in the Wakool area in August 1982 and piezometers with data available for that time from which the water table is generated. (Total number of piezometers: 804)

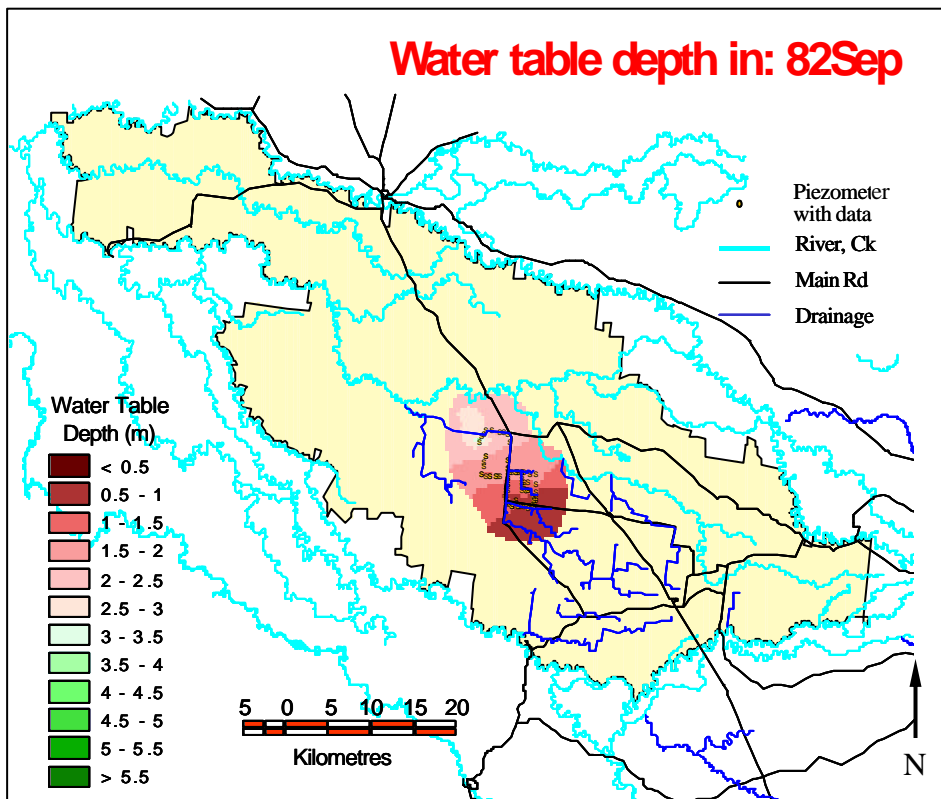


Figure A68. Water table in the Wakool area in September 1982 and piezometers with data available for that time from which the water table is generated. (Total number of piezometers: 98)

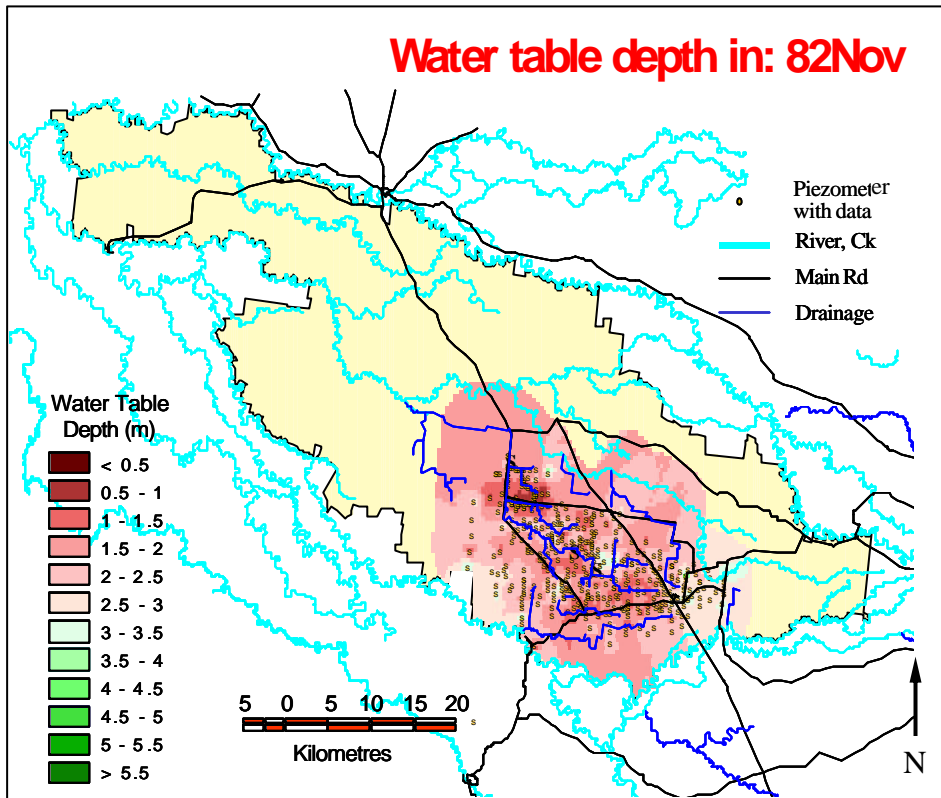


Figure A69. Water table in the Wakool area in November 1982 and piezometers with data available for that time from which the water table is generated. (Total number of piezometers: 451)

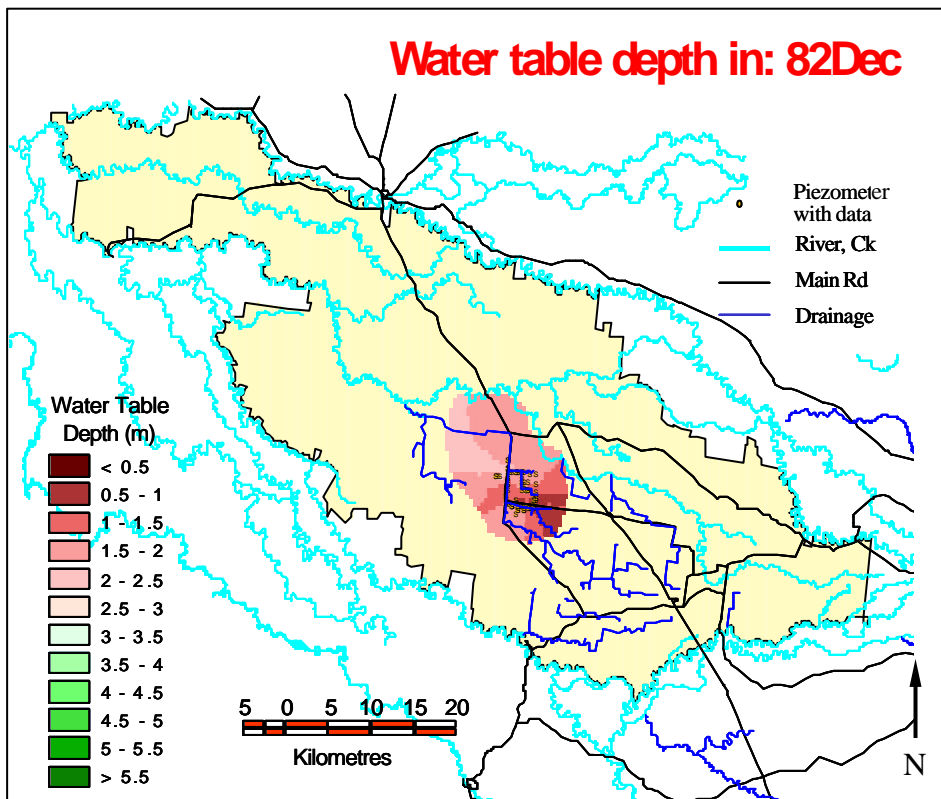


Figure A70. Water table in the Wakool area in December 1982 and piezometers with data available for that time from which the water table is generated. (Total number of piezometers: 105)

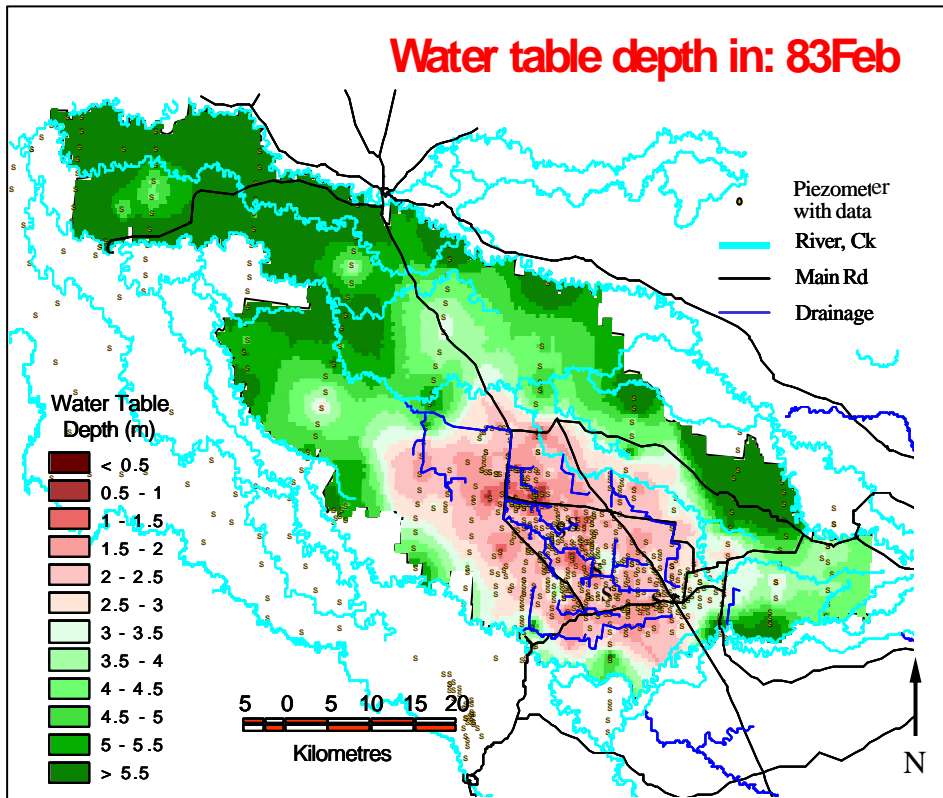


Figure A71. Water table in the Wakool area in February 1983 and piezometers with data available for that time from which the water table is generated. (Total number of piezometers: 823)

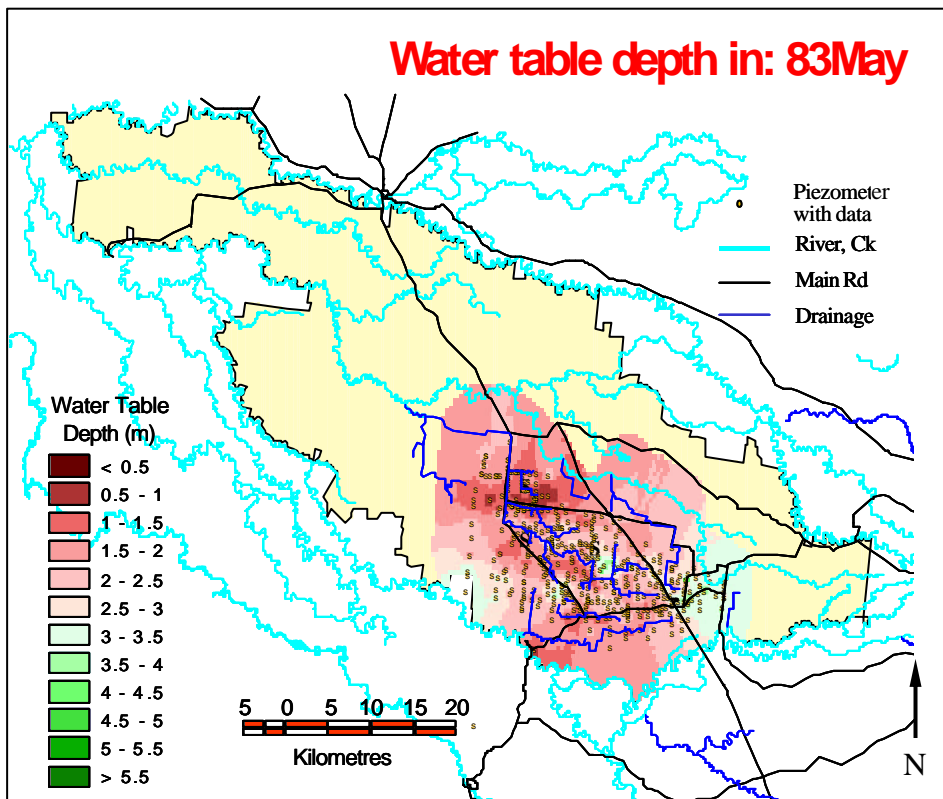


Figure A72. Water table in the Wakool area in May 1983 and piezometers with data available for that time from which the water table is generated. (Total number of piezometers: 469)

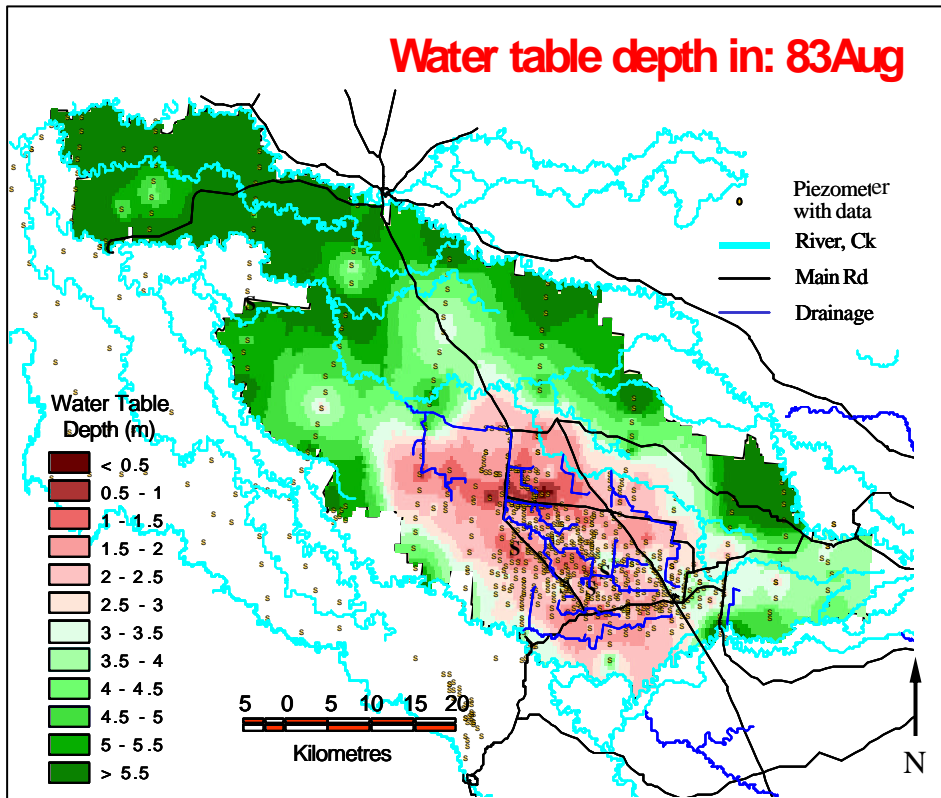


Figure A73. Water table in the Wakool area in August 1983 and piezometers with data available for that time from which the water table is generated. (Total number of piezometers: 826)

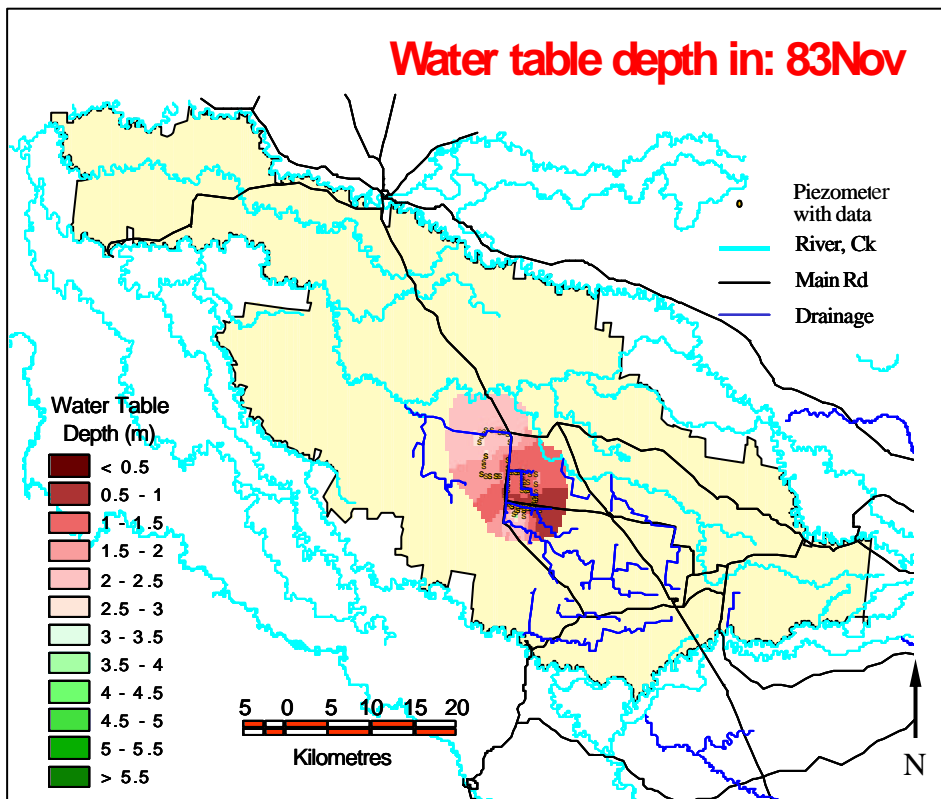


Figure A74. Water table in the Wakool area in November 1983 and piezometers with data available for that time from which the water table is generated. (Total number of piezometers: 123)

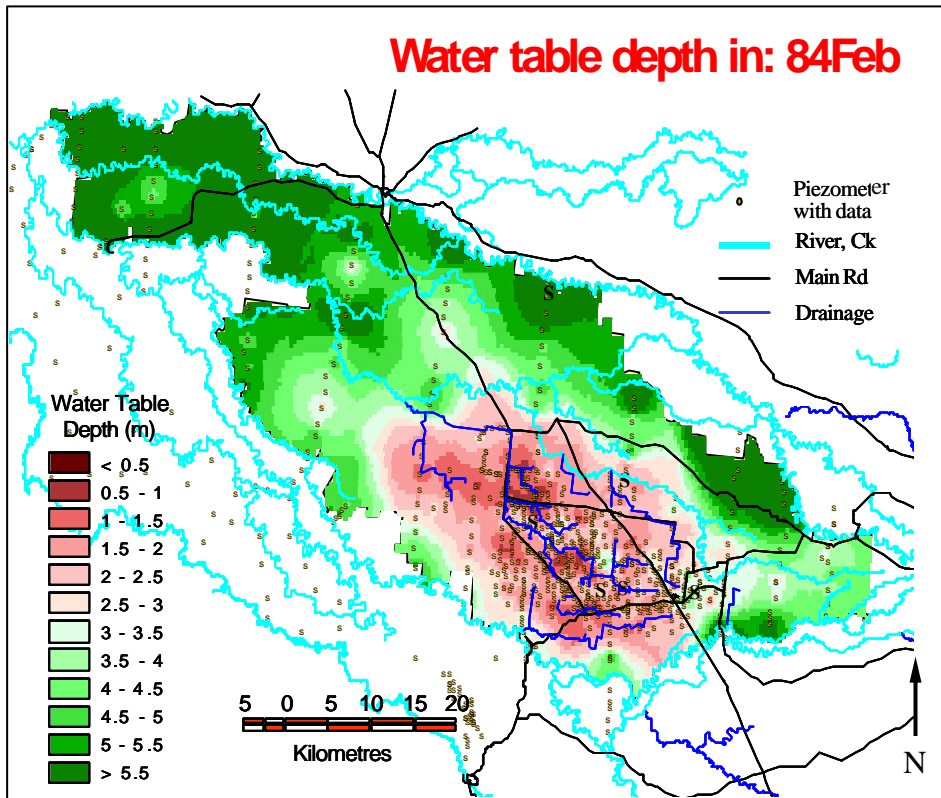


Figure A75. Water table in the Wakool area in February 1984 and piezometers with data available for that time from which the water table is generated. (Total number of piezometers: 853)

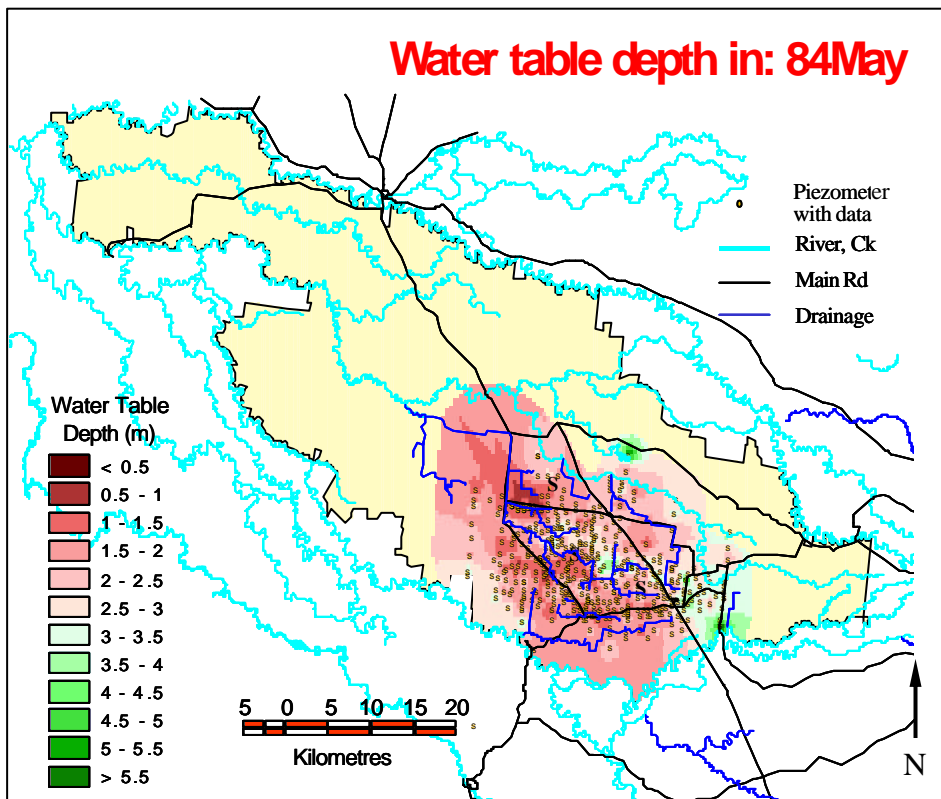


Figure A76. Water table in the Wakool area in May 1984 and piezometers with data available for that time from which the water table is generated. (Total number of piezometers: 455)

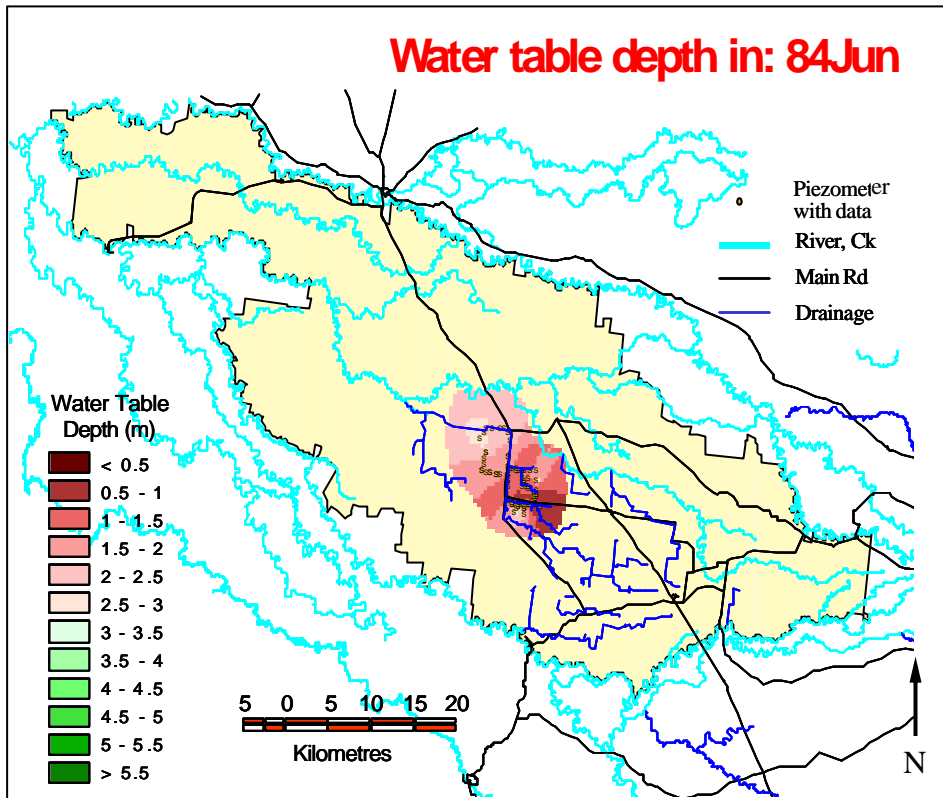


Figure A77. Water table in the Wakool area in June 1984 and piezometers with data available for that time from which the water table is generated. (Total number of piezometers: 122)

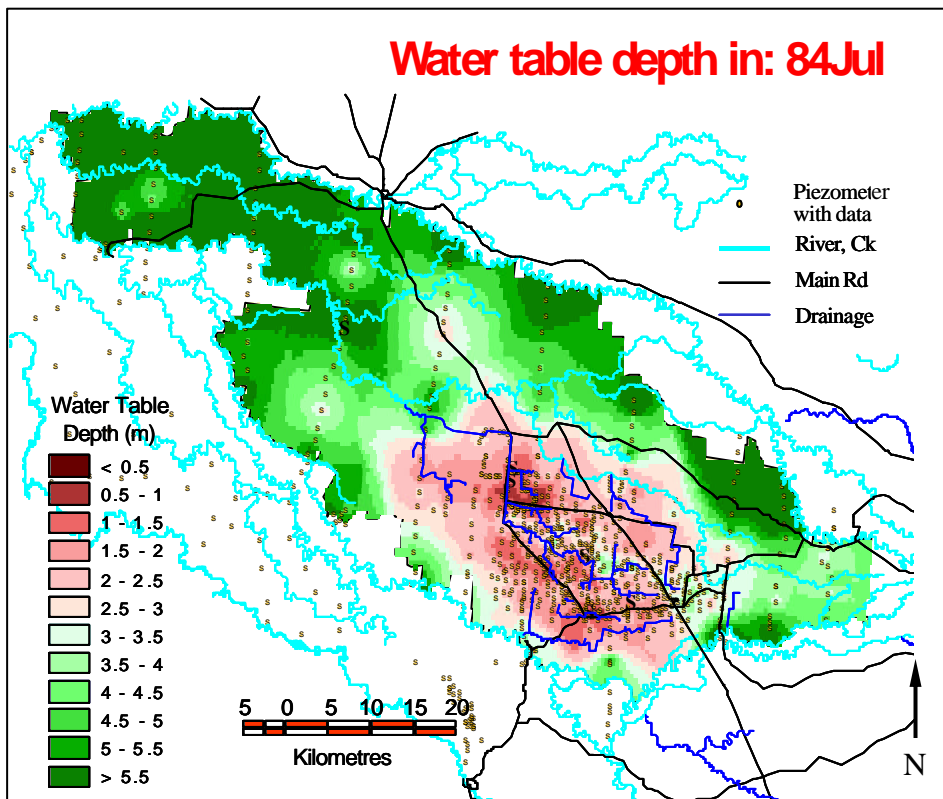


Figure A78. Water table in the Wakool area in July 1984 and piezo meters with data available for that time from which the water table is generated. (Total number of piezometers: 869)

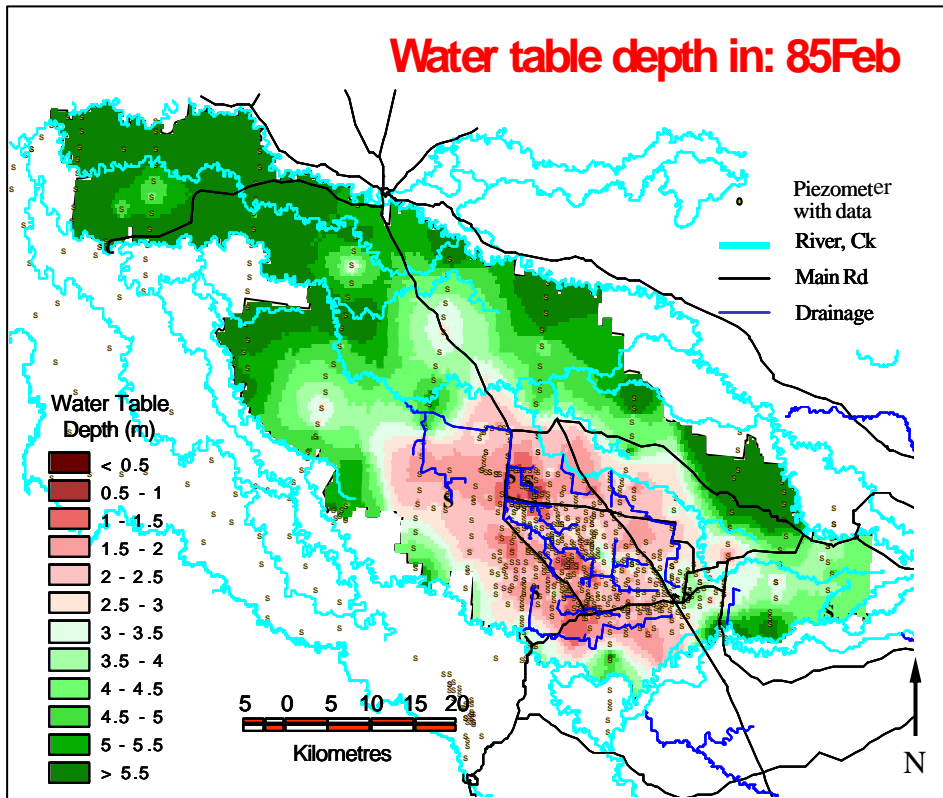


Figure A79. Water table in the Wakool area in February 1985 and piezometers with data available for that time from which the water table is generated. (Total number of piezometers: 871)

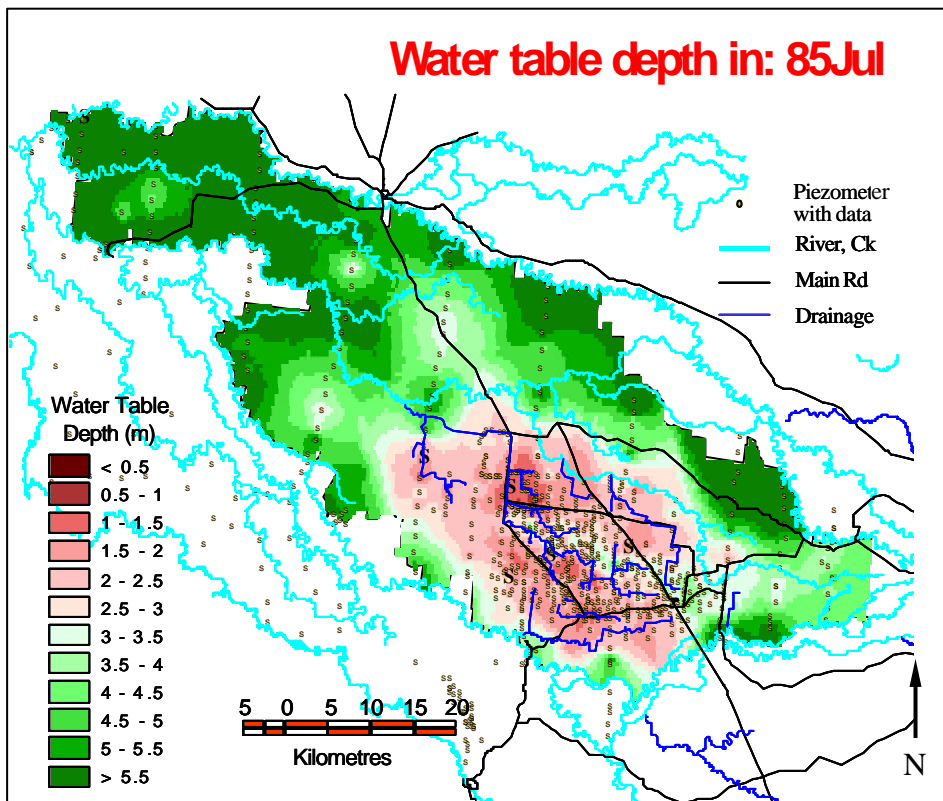


Figure A80. Water table in the Wakool area in July 1985 and piezometers with data available for that time from which the water table is generated. (Total number of piezometers: 860)