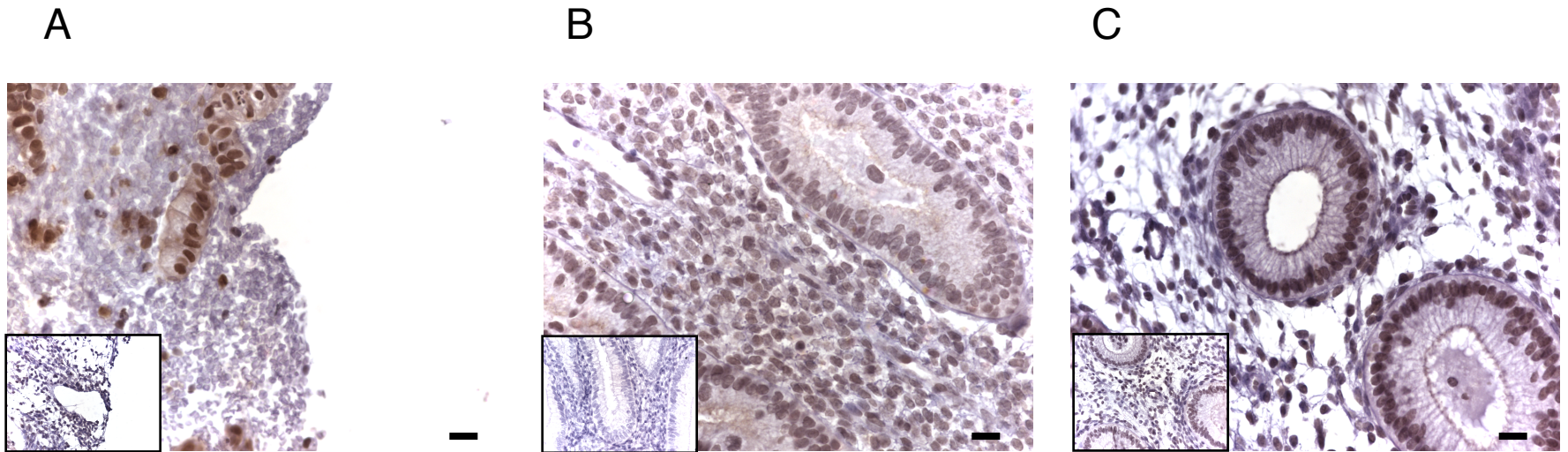


## TNF- $\alpha$



**Figure 5.5:** Immunohistochemical staining of baboon endometrial sections with TNF $\alpha$ .  
*Eutopic endometrium* (A) Menses; (B) Late Follicular and (C) Mid-Luteal. Inset box = Negative control.  
Magnification  $\times 400$  and bar = 20  $\mu$ m.