

NSW Recorded Crime Statistics 2011

Annual Briefing

Road map

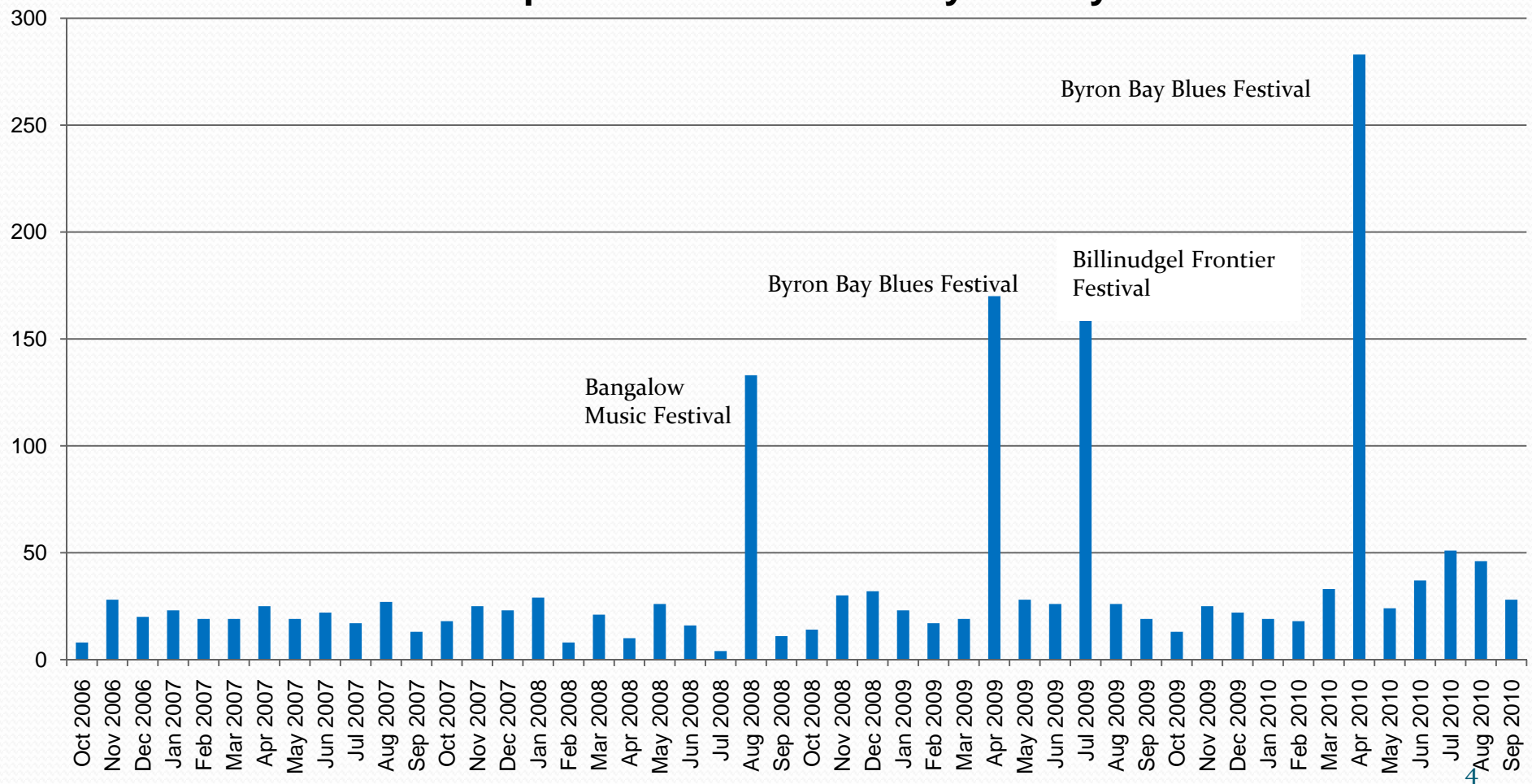
- Background
- Long term trends in property and violent crime
- Major offences by Statistical Division (SD), Statistical Sub-Division (SSD) & Local Government Area (LGA)
- Key trends outside the major offences
 - Use/possess amphetamines
 - Breach bail conditions
 - Shooting offences
 - Abduction/kidnapping
- Assaults on licensed premises
- Steal from a motor vehicle and petrol theft (fraud)

Background

- What are we counting?
 - Incidents, crimes, arrests, convictions?
- Reported vs detected crime
 - Reported crime is crime reported to police, usually by victims (e.g. burglary)
 - Detected crime is crime discovered by police (e.g. illegal drug possession)
- Detected crime is strongly influenced by police resources and strategy

An example of detected crime

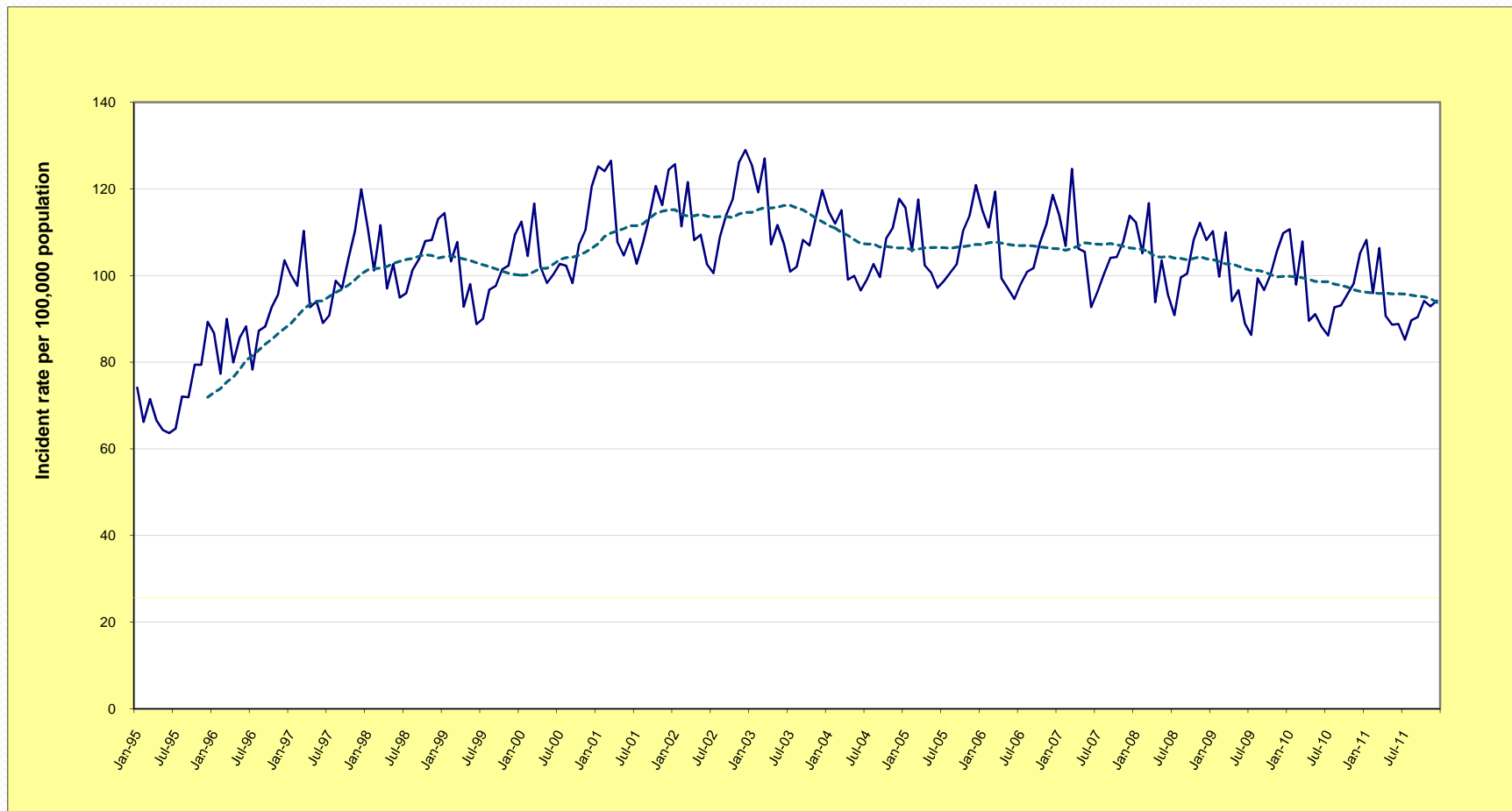
Use/possess cannabis in Byron Bay



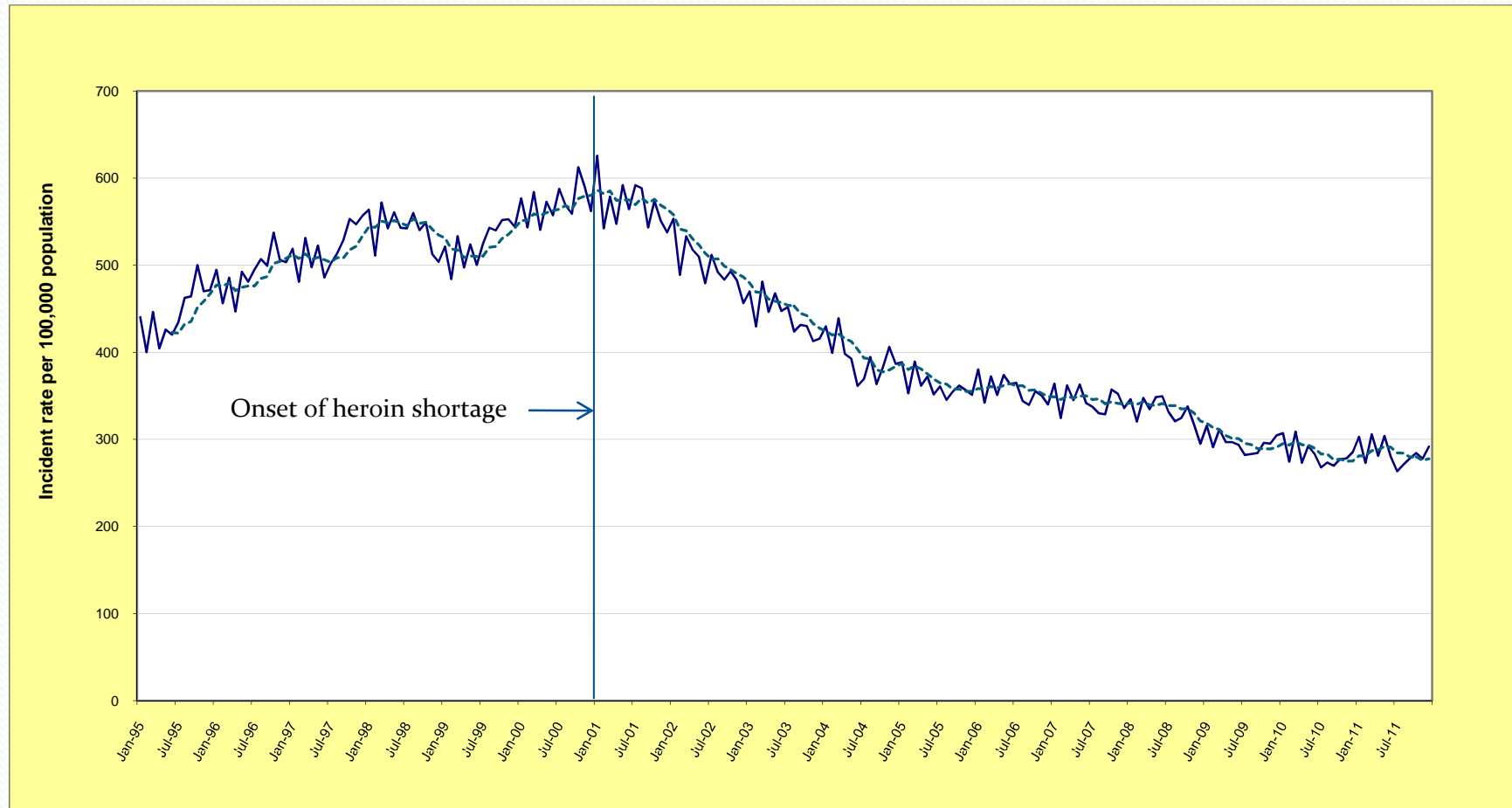
Background

- What are we counting?
- Reported vs detected crime
- The 17 major offences
- Testing for trend:
- The importance of prevalence
- Numerical constraints
 - On raw numbers of incidents in a year (20)
 - On population sizes (3,000)
- The meaning of red, yellow, 'ns' and ''

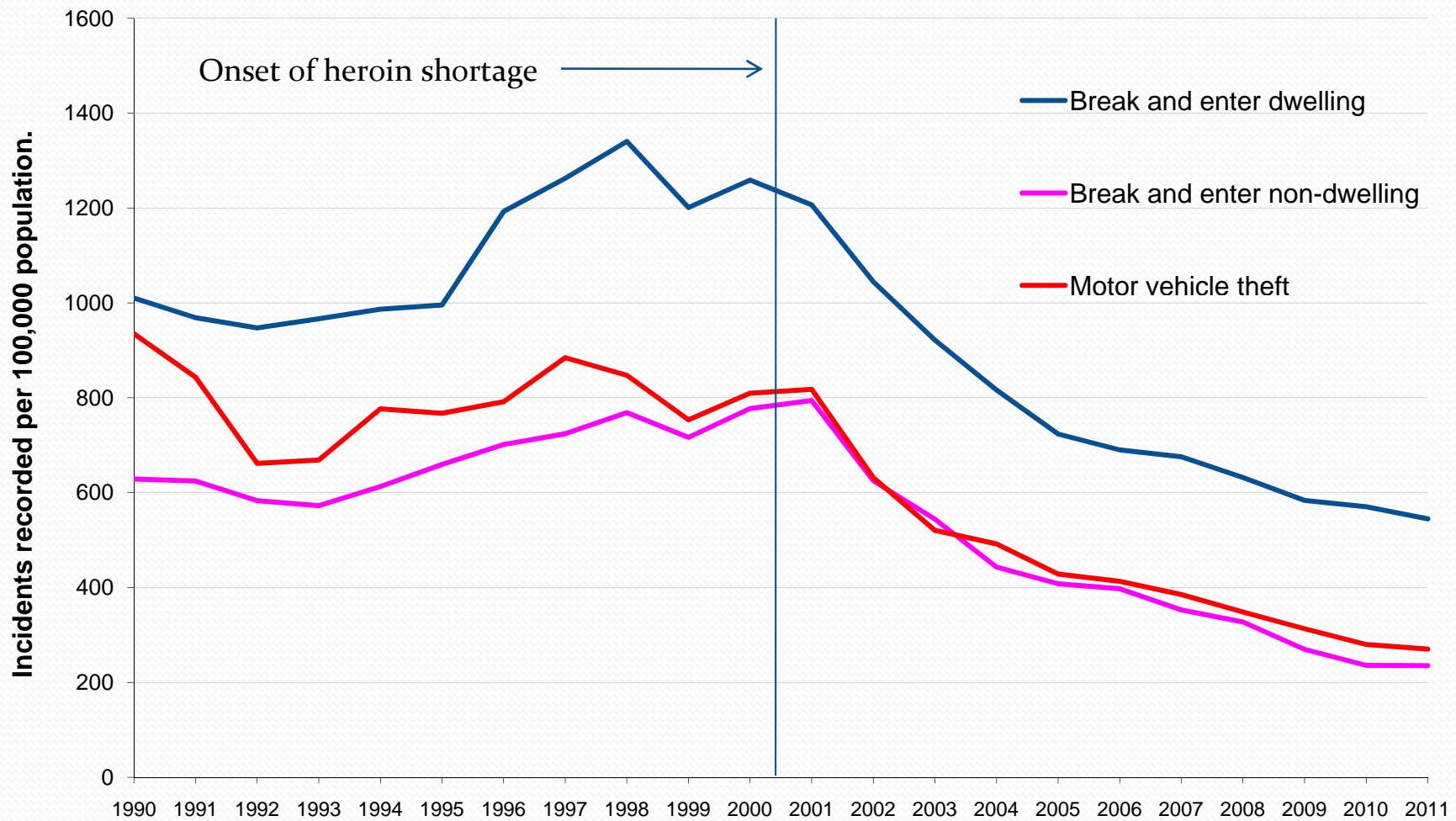
Violent crime: Long-term trend



Property crime: Long-term trend



Long-term trend in BES and MVT



Major offences:

Two and five year trends

<i>Offence category</i>	<i>Trend result and annual percentage change over Jan 2010 - Dec 2011</i>	<i>Trend result and average annual percentage change over Jan 2007 - Dec 2011</i>
Murder*	Stable	Stable
Assault - domestic violence related	Stable	Stable
Assault - non-domestic violence related	Down by 7.0%	Down by 3.1%
Sexual assault	Stable	Stable
Indecent assault, act of indecency and other sexual offences	Stable	Stable
Robbery without a weapon	Down by 14.8%	Down by 10.4%
Robbery with a firearm	Stable	Down by 9.5%
Robbery with a weapon not a firearm	Stable	Down by 9.9%
Break and enter dwelling	Down by 4.5%	Down by 4.1%
Break and enter non-dwelling	Stable	Down by 8.6%
Motor vehicle theft	Stable	Down by 7.4%
Steal from motor vehicle	Up by 7.5%	Down by 6.2%
Steal from retail store	Stable	Up by 3.0%
Steal from dwelling	Stable	Stable
Steal from person	Stable	Down by 7.6%
Fraud	Stable	Stable
Malicious damage to property	Stable	Down by 5.1%

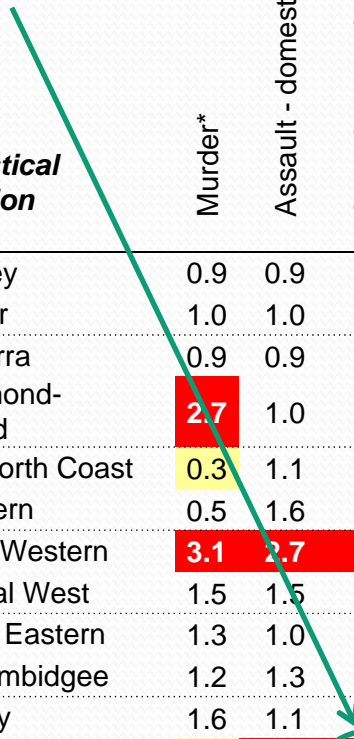
Major offences by SD: incidence

<i>Statistical Division</i>	Murder*	Assault - domestic violence related	Assault - non-domestic violence related	Sexual assault	Indecent assault, act of indecency and other sexual offences	Robbery without a weapon	Robbery with a firearm	Robbery with a weapon not a firearm	Break and enter dwelling	Break and enter non-dwelling	Motor vehicle theft	Steal from motor vehicle	Steal from retail store	Steal from dwelling	Steal from person	Fraud	Malicious damage to property
Sydney	ns	ns	-7.9	ns	ns	-15.8	ns	ns	-5.1	-5.7	-7.5	ns	ns	ns	ns	ns	-7.8
Hunter	.	ns	-11.0	ns	ns	ns	ns	ns	ns	ns	ns	26.4	ns	ns	ns	ns	ns
Illawarra	.	ns	ns	ns	ns	ns	.	45.1	ns	ns	ns	25.4	ns	10.9	ns	ns	ns
Richmond-Tweed	.	ns	ns	ns	ns	ns	.	.	ns	ns	23.0	ns	ns	ns	ns	ns	ns
Mid-North Coast	.	ns	ns	ns	ns	ns	.	59.4	-17.9	20.4	ns	ns	ns	ns	ns	ns	ns
Northern	.	ns	ns	ns	ns	ns	.	.	ns	ns	ns	ns	14.8	ns	ns	ns	ns
North Western	.	ns	ns	ns	ns	ns	.	.	ns	ns	ns	ns	ns	ns	ns	ns	ns
Central West	.	11.5	ns	ns	55.8	ns	.	.	ns	-8.9	ns	ns	ns	ns	ns	ns	ns
South Eastern	.	ns	ns	ns	ns	ns	.	.	ns	ns	ns	ns	-30.9	ns	-48.2	ns	ns
Murrumbidgee	.	ns	-10.5	ns	ns	ns	.	.	ns	ns	ns	ns	ns	ns	ns	ns	ns
Murray	.	ns	ns	ns	ns	.	.	.	-15.2	-19.2	ns	ns	ns	ns	-40.5	ns	ns
Far West	.	ns	25.1	ns	ns	ns	ns	ns	ns	ns	.	35.4	ns
NSW	ns	ns	-7.0	ns	ns	-14.8	ns	ns	-4.5	ns	ns	7.5	ns	ns	ns	ns	ns

Major offences by SD: prevalence

<i>Statistical Division</i>	Murder*	Assault - domestic violence related	Assault - non-domestic violence related	Sexual assault	Indecent assault, act of indecency and other sexual offences	Robbery without a weapon	Robbery with a firearm	Robbery with a weapon not a firearm	Break and enter dwelling	Break and enter non-dwelling	Motor vehicle theft	Steal from motor vehicle	Steal from retail store	Steal from dwelling	Steal from person	Fraud	Malicious damage to property
Sydney	0.9	0.9	0.9	0.8	0.9	1.3	1.3	1.2	0.9	0.6	1.0	0.9	1.0	0.8	1.3	1.2	0.8
Hunter	1.0	1.0	1.1	1.3	1.3	0.7	0.8	0.7	1.2	1.7	1.4	1.4	1.0	1.3	0.7	0.9	1.4
Illawarra	0.9	0.9	1.0	1.0	0.9	0.6	0.7	0.8	1.0	1.3	1.0	1.0	1.0	1.1	0.6	0.6	1.0
Richmond-Tweed	2.7	1.0	1.1	1.6	1.2	0.4	0.7	0.6	1.0	1.7	1.0	1.0	0.9	1.3	0.7	0.5	1.0
Mid-North Coast	0.3	1.1	1.1	1.3	1.1	0.5	0.6	0.8	1.1	2.0	1.0	1.0	0.8	1.4	0.5	0.5	1.2
Northern	0.5	1.6	1.5	1.7	1.7	0.5	0.4	0.3	1.6	1.8	0.8	1.0	1.1	1.5	0.4	0.5	1.5
North Western	3.1	2.7	2.0	1.9	2.1	0.7	0.3	0.9	2.1	2.2	1.1	1.4	1.2	2.2	0.5	0.6	2.0
Central West	1.5	1.5	1.4	1.6	1.5	0.5	0.3	0.6	1.4	1.4	1.0	1.1	1.1	1.4	0.5	0.6	1.5
South Eastern	1.3	1.0	0.9	1.1	1.1	0.2	0.0	0.1	0.7	1.1	0.4	0.7	0.5	1.0	0.2	0.5	1.1
Murrumbidgee	1.2	1.3	1.2	1.5	1.5	0.4	0.1	0.5	1.3	1.7	0.7	1.2	1.0	1.8	0.4	0.5	1.3
Murray	1.6	1.1	0.9	1.5	1.0	0.3	0.7	0.3	1.2	1.8	0.9	1.3	0.9	1.7	0.3	0.5	1.3
Far West	0.0	3.5	2.3	1.6	1.7	0.3	0.0	0.4	1.8	2.0	0.5	1.1	0.6	1.8	0.6	0.8	2.0
NSW	1.0	1.0	1.0	1.0	1.0	1.0	1.0	1.0	1.0	1.0	1.0	1.0	1.0	1.0	1.0	1.0	1.0

Increased by 25%



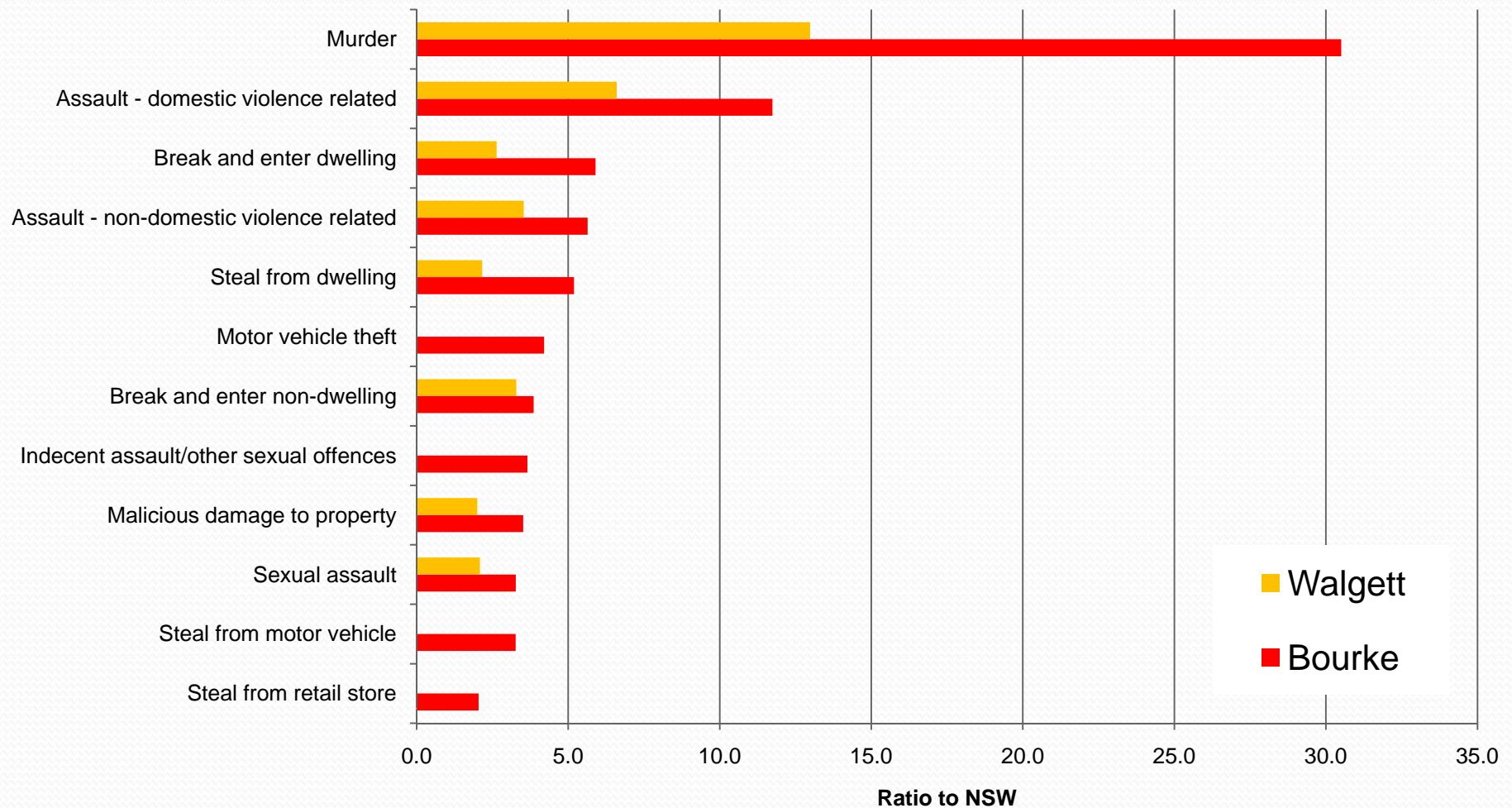
Major offences by SSD: incidence

<i>Metropolitan Statistical Subdivision</i>	Murder*	Assault - domestic violence related	Assault - non-domestic violence related	Sexual assault	Indecent assault, act of indecency and other sexual offences	Robbery without a weapon	Robbery with a firearm	Robbery with a weapon not a firearm	Break and enter dwelling	Break and enter non-dwelling	Motor vehicle theft	Steal from motor vehicle	Steal from retail store	Steal from dwelling	Steal from person	Fraud	Malicious damage to property
Inner Sydney	.	ns	ns	ns	ns	ns	-47.9	ns	-10.8	ns	ns	ns	ns	-14.1	ns	-9.8	ns
Eastern Suburbs	.	ns	ns	ns	ns	ns	.	ns	ns	ns	ns	ns	ns	ns	ns	ns	ns
St George-Sutherland	.	ns	-10.9	ns	ns	-33.8	ns	ns	-10.3	ns	-15.2	ns	ns	ns	ns	ns	-15.0
Canterbury-Bankstown	.	ns	ns	ns	ns	-20.1	ns	ns	ns	ns	33.1	37.7	ns	ns	ns	ns	-13.4
Fairfield-Liverpool	.	ns	ns	ns	ns	ns	ns	ns	ns	ns	23.1	ns	ns	ns	ns	ns	-4.8
Outer South Western Sydney	.	ns	-10.3	ns	30.9	-13.5	.	-35.5	ns	ns	-11.7	ns	10.7	ns	ns	ns	-11.4
Inner Western Sydney	.	ns	-15.8	ns	ns	-29.1	.	-40.0	-18.9	ns	-18.4	ns	ns	ns	ns	-11.1	ns
Central Western Sydney	.	ns	ns	ns	ns	-13.7	ns	ns	-11.5	ns	-10.2	ns	ns	ns	ns	-3.7	ns
Outer Western Sydney	.	ns	-13.0	ns	ns	ns	.	ns	ns	ns	-18.6	ns	ns	ns	ns	ns	-8.1
Blacktown	.	ns	ns	ns	ns	-22.8	.	ns	ns	ns	-9.8	ns	ns	ns	ns	ns	ns
Lower Northern Sydney	.	ns	ns	ns	ns	ns	.	ns	-12.9	ns	-17.2	-9.7	ns	ns	ns	ns	ns
Central Northern Sydney	.	ns	ns	ns	ns	ns	.	ns	ns	ns	ns	ns	ns	ns	26.3	15.8	ns
Northern Beaches	.	ns	-13.8	ns	ns	-55.0	.	.	ns	ns	-28.5	ns	-17.3	ns	ns	ns	-15.5
Central Coast	.	-8.8	-9.0	ns	ns	ns	.	ns	ns	-26.8	ns	14.6	ns	ns	ns	ns	ns
Newcastle	.	ns	-11.4	ns	34.1	ns	ns	ns	ns	ns	ns	22.3	ns	ns	ns	ns	ns
Wollongong	.	ns	ns	ns	ns	-25.5	.	38.1	ns	ns	ns	31.8	ns	12.4	ns	ns	ns

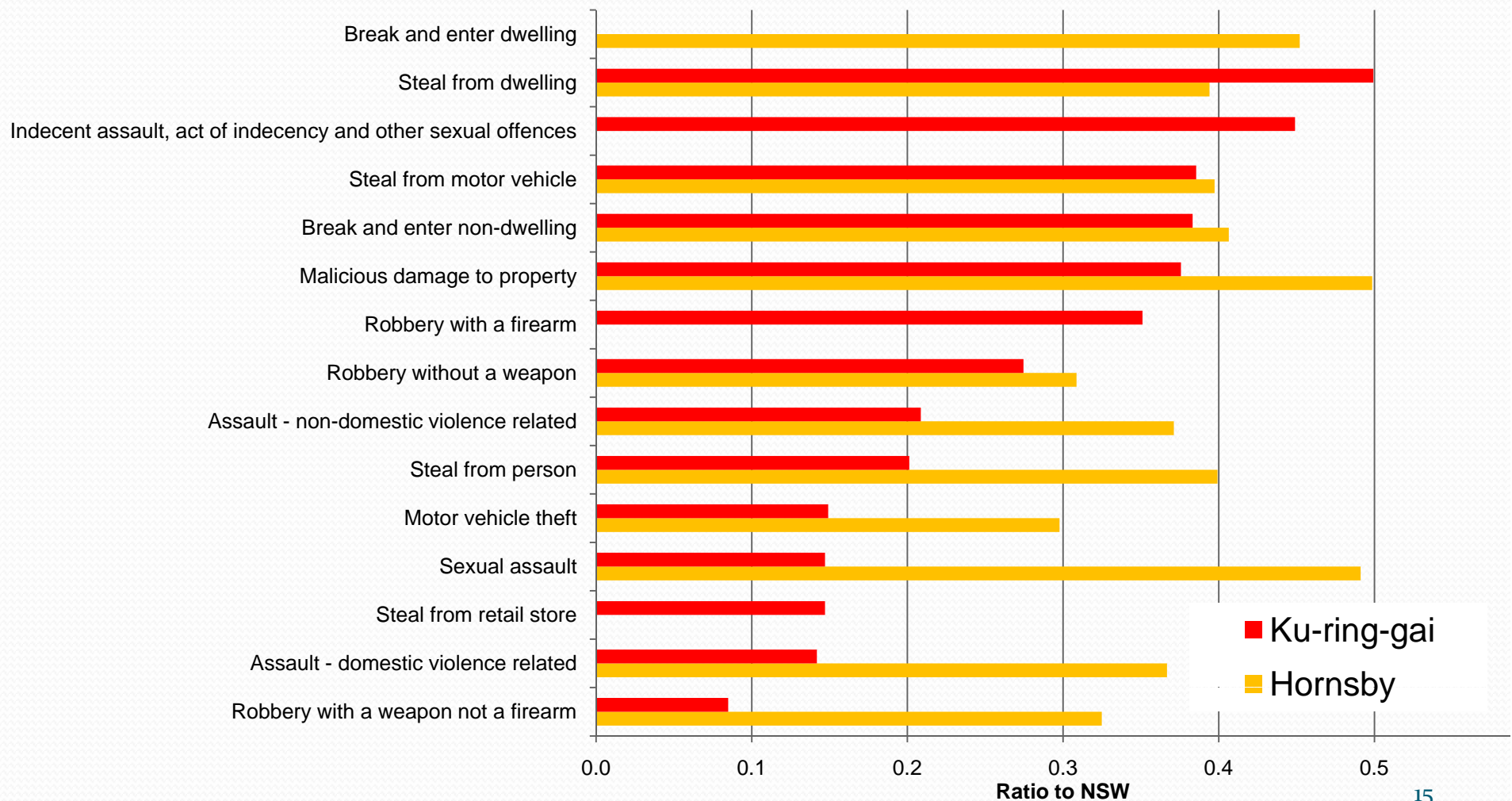
Major offences by SSD: prevalence

<i>Metropolitan Statistical Subdivision</i>	Murder*	Assault - domestic violence related	Assault - non-domestic violence related	Sexual assault	Indecent assault, act of indecency and other sexual offences	Robbery without a weapon	Robbery with a firearm	Robbery with a weapon not a firearm	Break and enter dwelling	Break and enter non-dwelling	Motor vehicle theft	Steal from motor vehicle	Steal from retail store	Steal from dwelling	Steal from person	Fraud	Malicious damage to property
Inner Sydney	1.3	1.1	2.5	1.2	1.4	4.1	2.1	3.0	1.0	1.2	1.5	1.7	2.8	1.3	7.6	3.0	1.3
Eastern Suburbs	0.4	0.6	0.8	0.6	0.7	1.4	1.3	1.0	0.9	0.5	1.0	1.0	0.9	1.0	1.4	1.1	0.7
St George-Sutherland	0.4	0.6	0.6	0.5	0.6	0.8	1.0	0.8	0.5	0.4	0.7	0.7	0.7	0.5	0.6	0.9	0.7
Canterbury-Bankstown	0.6	1.0	0.7	0.5	0.6	1.2	2.8	1.9	0.8	0.5	1.4	1.0	0.8	0.6	0.5	1.5	0.6
Fairfield-Liverpool	1.5	1.1	0.8	0.8	0.8	1.6	1.6	1.8	1.1	0.6	1.3	1.0	1.0	0.7	0.6	1.1	0.8
Outer South Western Sydney	0.7	1.4	1.0	1.2	1.2	1.2	1.0	0.9	1.2	0.8	1.2	0.9	1.0	1.0	0.6	0.7	1.1
Inner Western Sydney	0.5	0.6	0.5	0.5	0.7	1.5	1.8	1.2	0.8	0.5	1.0	1.0	1.0	0.6	0.9	1.6	0.6
Central Western Sydney	0.3	1.1	0.9	0.7	0.9	2.1	2.2	2.2	1.2	0.7	1.3	1.0	1.0	0.8	1.0	1.5	0.7
Outer Western Sydney	1.7	1.3	1.0	1.3	1.1	0.9	0.6	0.7	0.9	0.7	1.0	0.9	0.8	1.0	0.7	0.9	1.1
Blacktown	2.4	1.7	1.2	1.2	1.1	1.6	1.0	1.6	1.3	0.7	1.3	1.1	1.3	1.1	1.1	1.4	1.2
Lower Northern Sydney	0.6	0.3	0.4	0.3	0.6	0.4	0.8	0.8	0.6	0.5	0.4	0.6	1.1	0.6	0.7	1.1	0.5
Central Northern Sydney	0.8	0.3	0.3	0.5	0.5	0.3	0.6	0.3	0.6	0.4	0.3	0.4	0.6	0.4	0.3	0.7	0.5
Northern Beaches	0.0	0.5	0.6	0.5	0.6	0.4	0.2	0.1	0.5	0.4	0.3	0.7	0.6	0.7	0.8	0.7	0.6
Central Coast	0.9	0.9	1.0	1.3	1.1	0.5	0.7	0.5	1.2	1.0	1.2	1.2	1.0	1.0	0.8	0.8	1.1
Newcastle	1.0	1.0	1.1	1.4	1.3	0.8	0.8	0.8	1.2	1.6	1.5	1.5	1.1	1.3	0.8	1.0	1.4
Wollongong	1.3	0.8	0.9	1.0	0.8	0.6	0.9	1.0	0.9	1.0	1.1	1.0	1.1	1.0	0.7	0.7	1.0

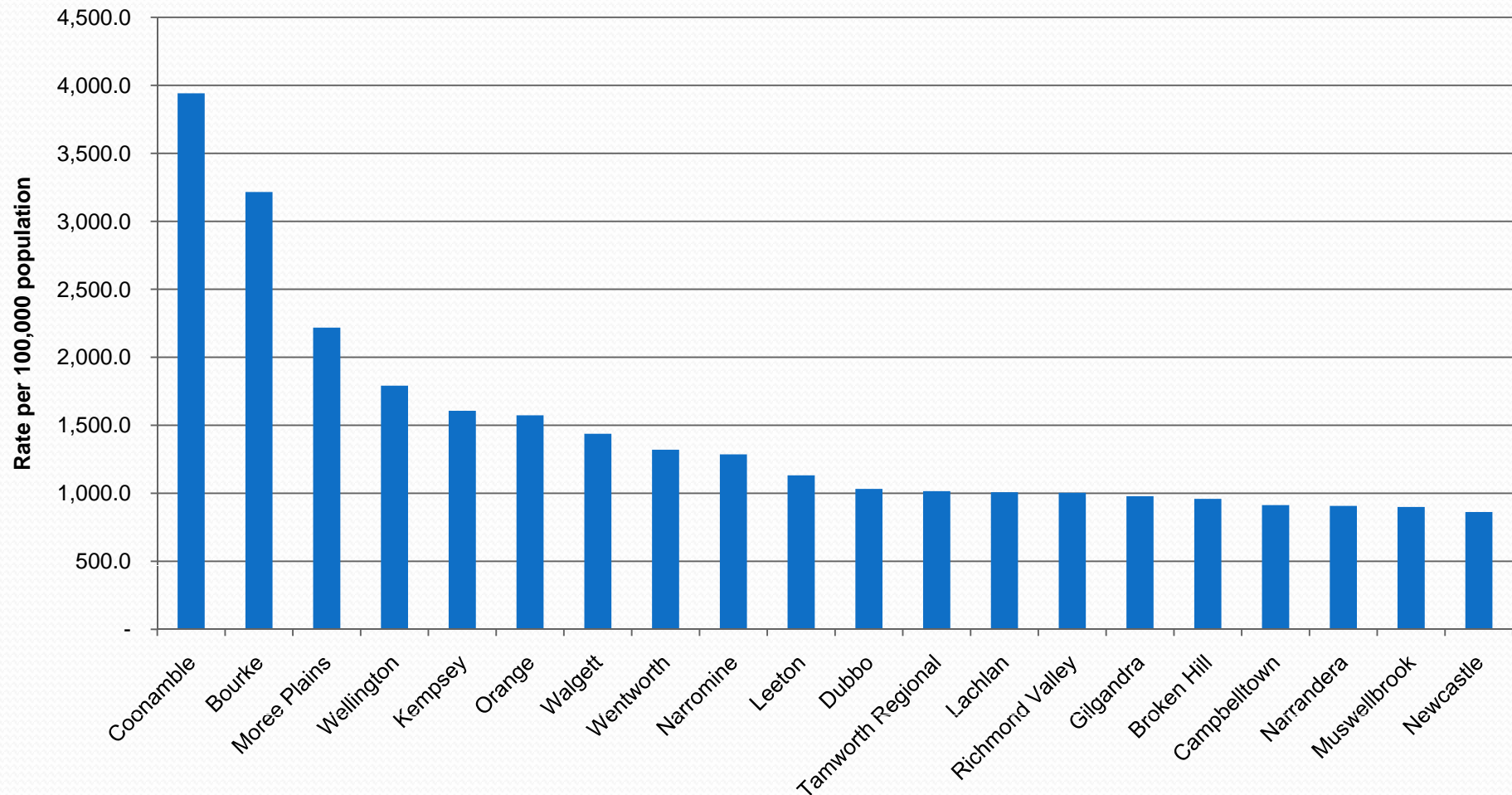
The two most crime-prone LGAs



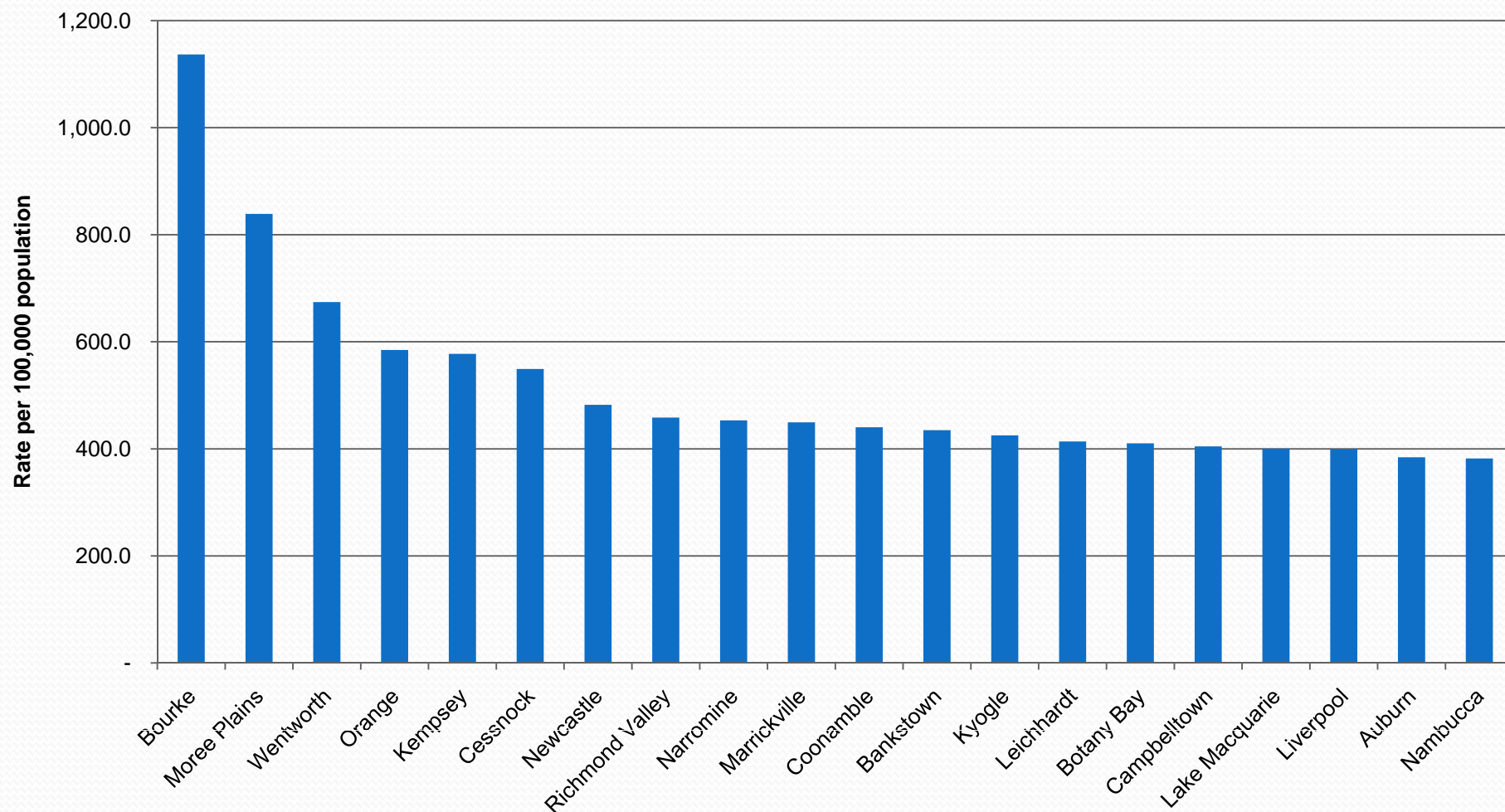
The two least crime-prone LGAs



Top 20 LGAs for BES (dwelling)

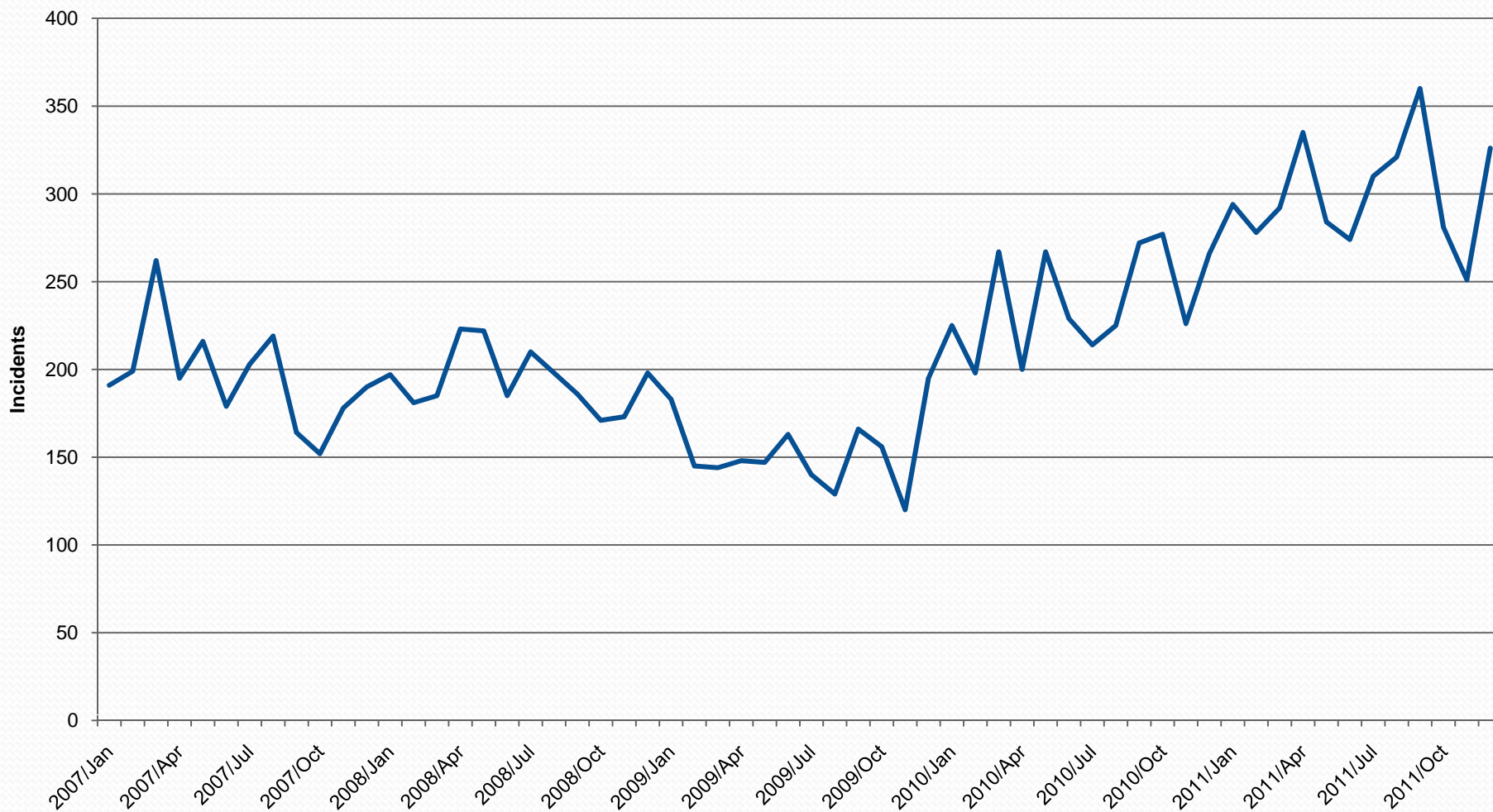


Top 20 LGAs for MVT



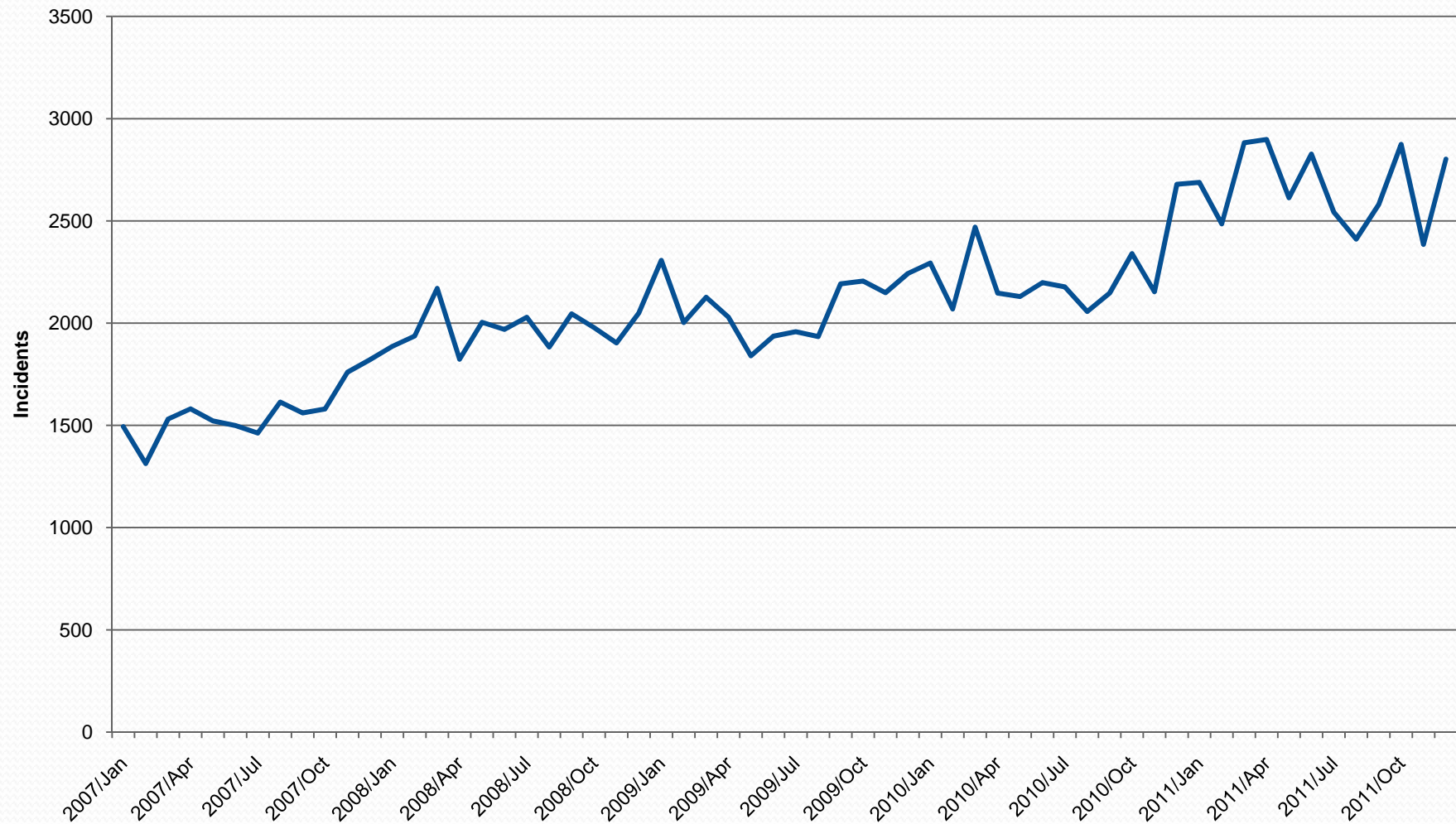
Trend in use/possess amphetamines

Jan 2007-Dec 2011



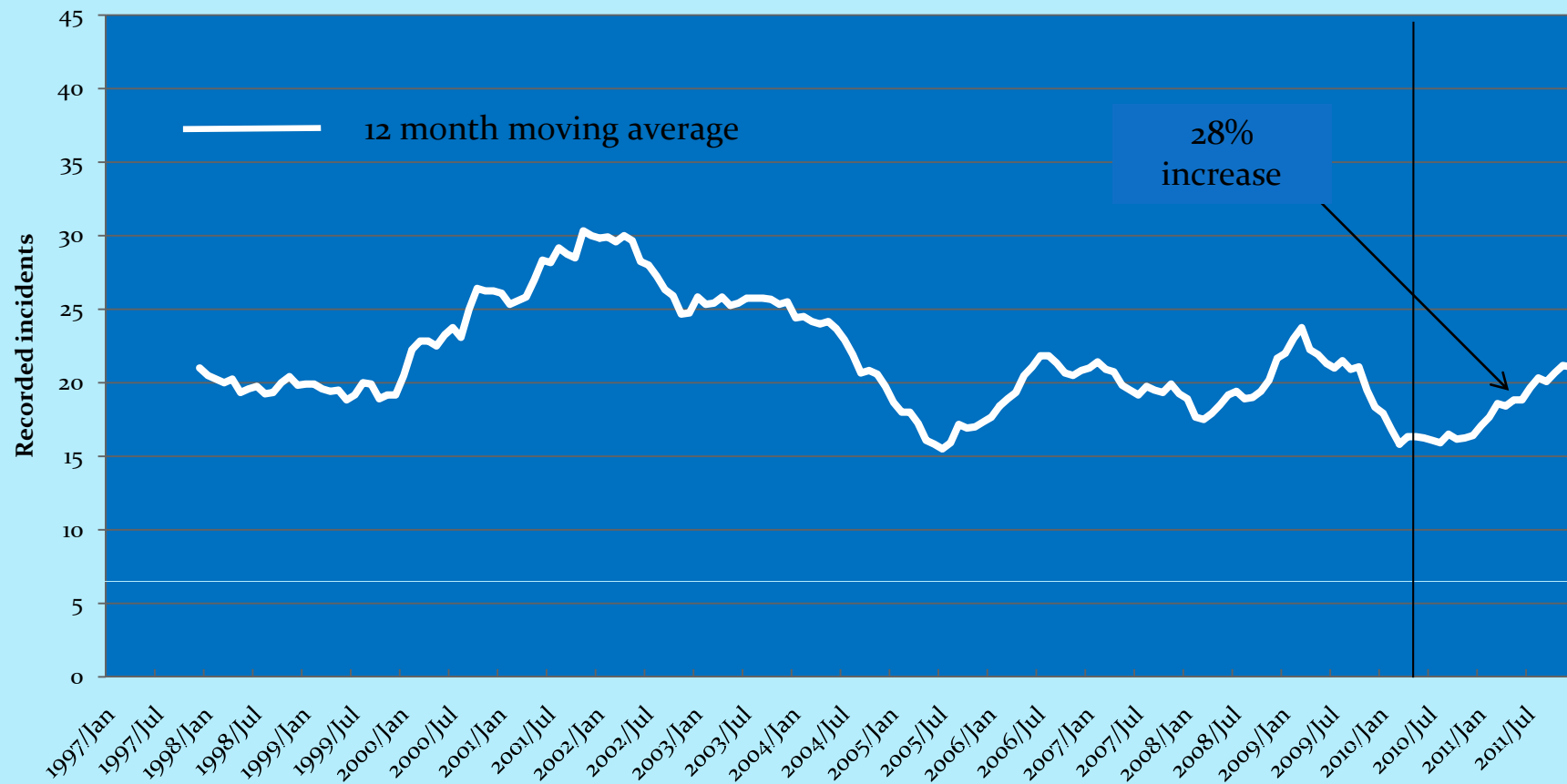
Trend in breach bail conditions

Jan 2007-Dec 2011



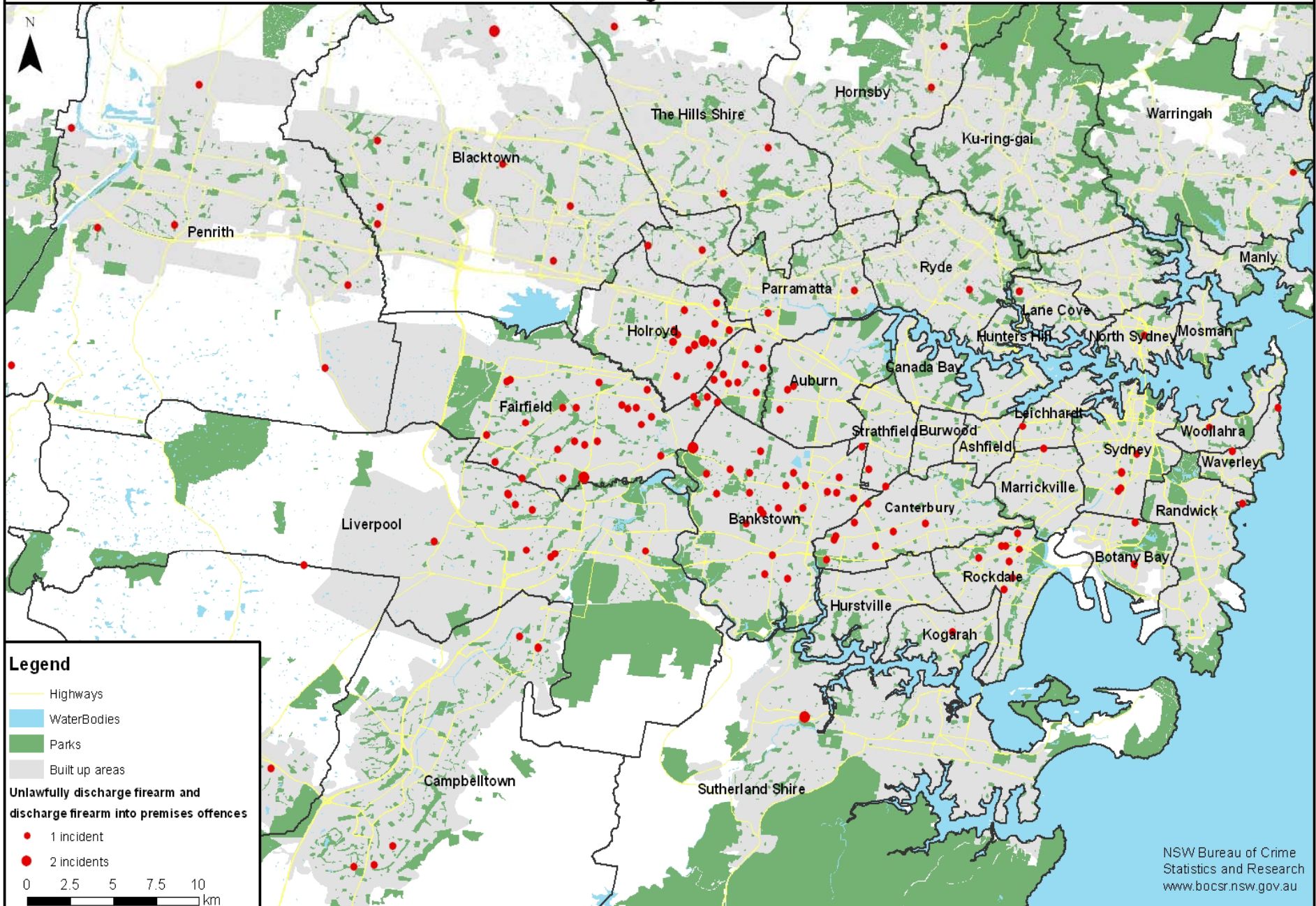
The trend in shooting incidents

Jan 1997-Dec 2011

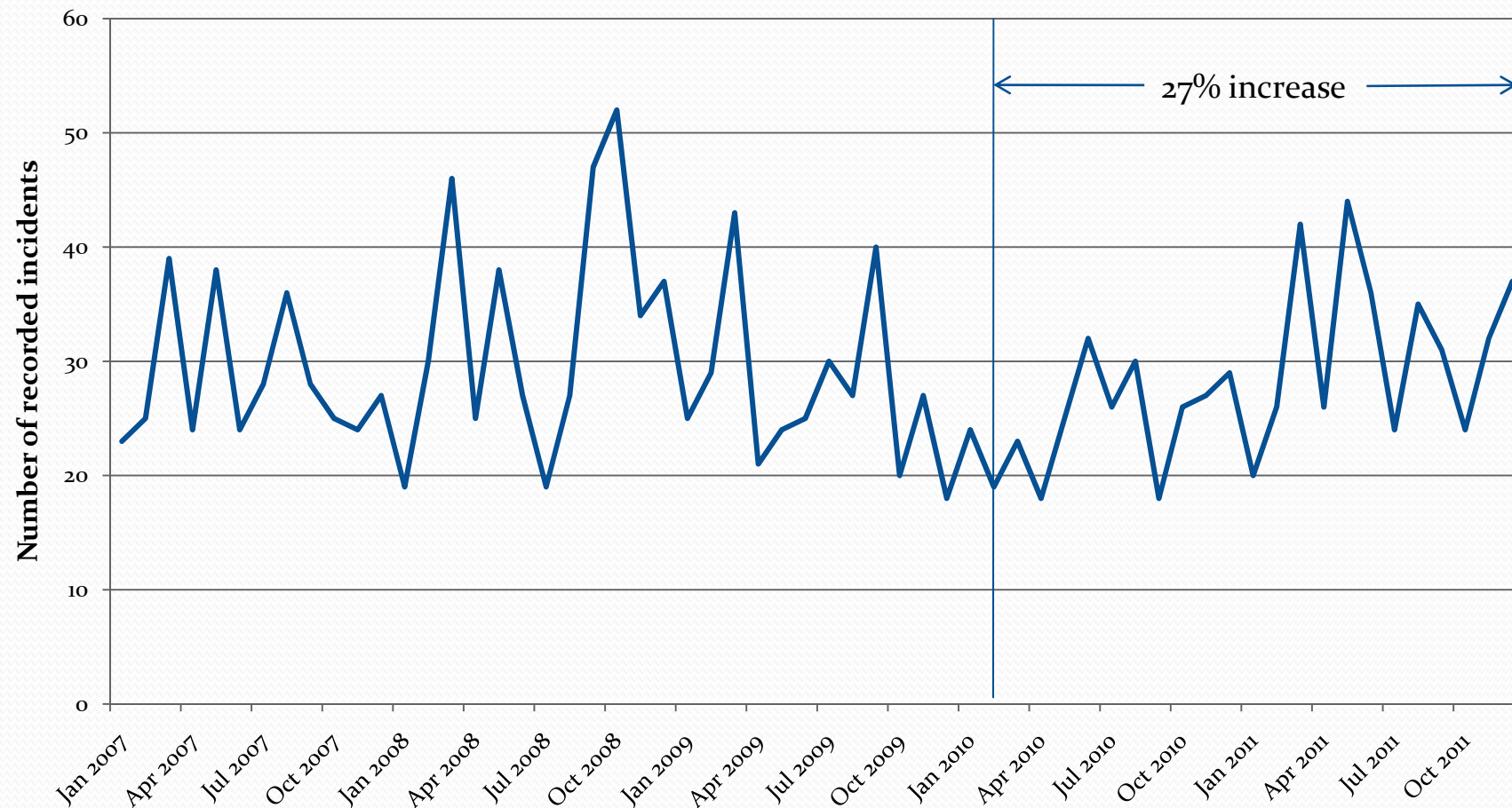


Source: NSW Bureau of Crime Statistics and

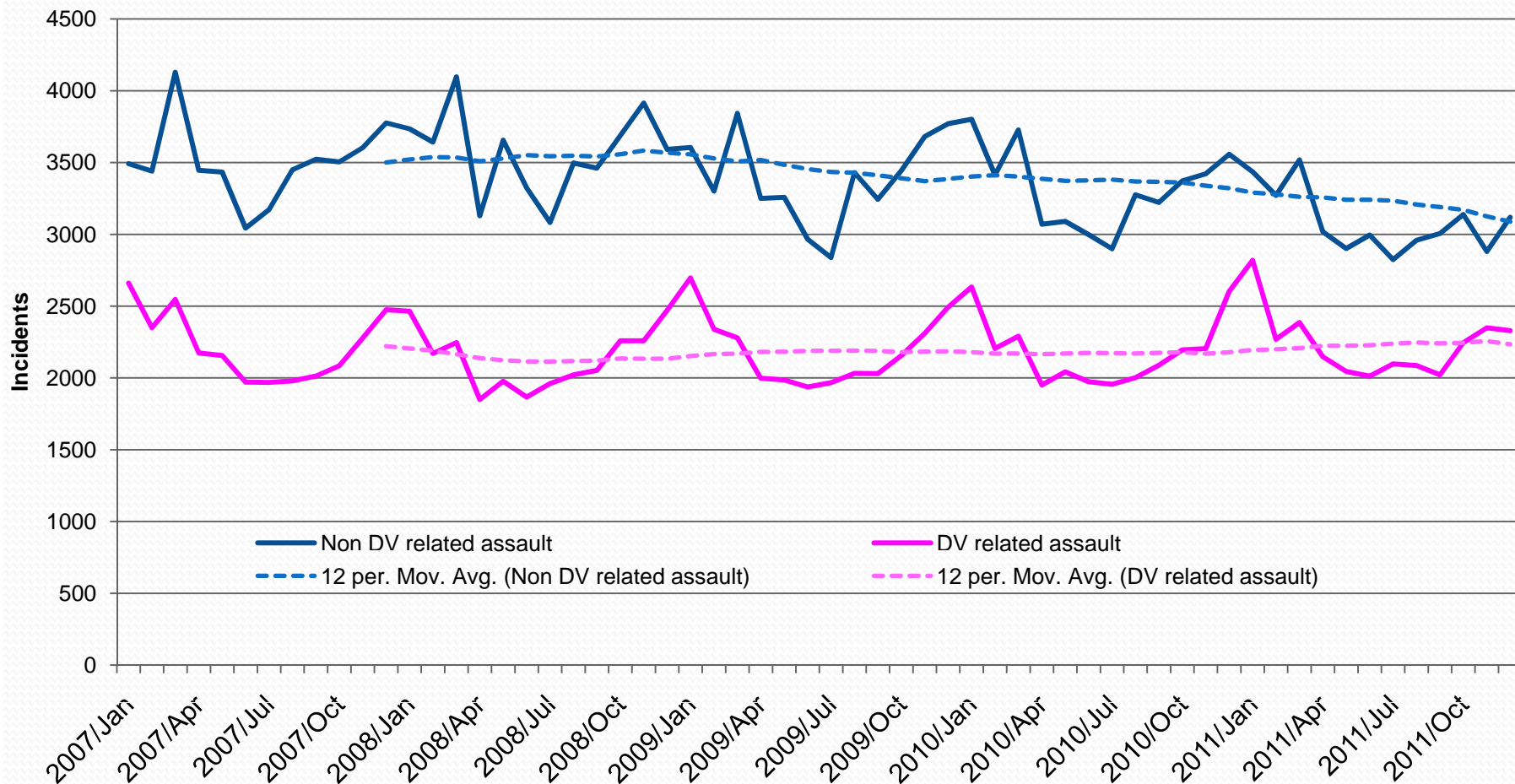
Recorded criminal incidents of 'unlawfully discharge firearm' and 'discharge firearm into premises' Occurring in 2011



Trend in abduction/kidnapping: Jan 2007-Dec 2011



Trend in assault: Jan 2007-Dec 2011

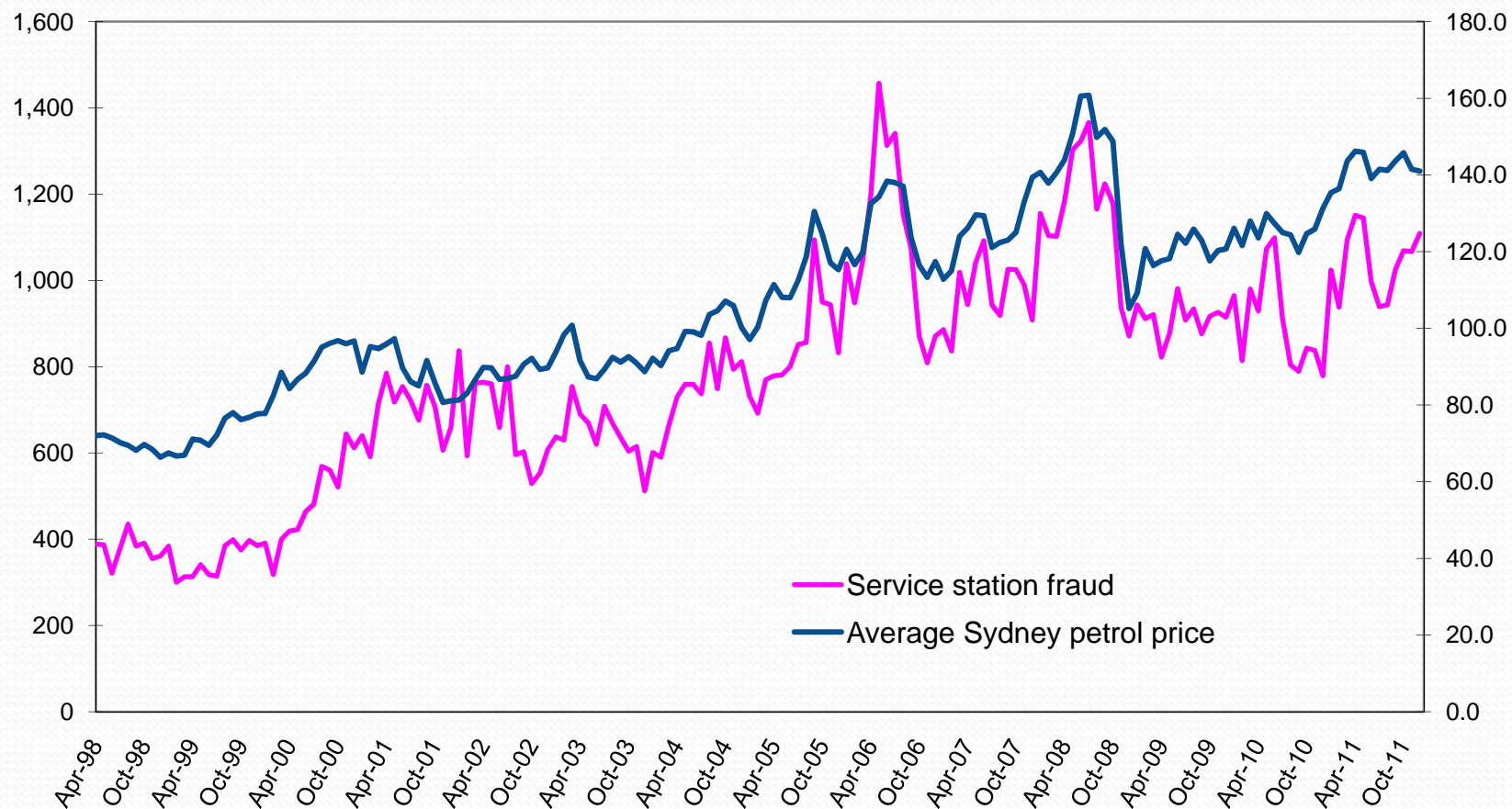


Service station fraud & petrol prices

Apr 1998-Dec 2011

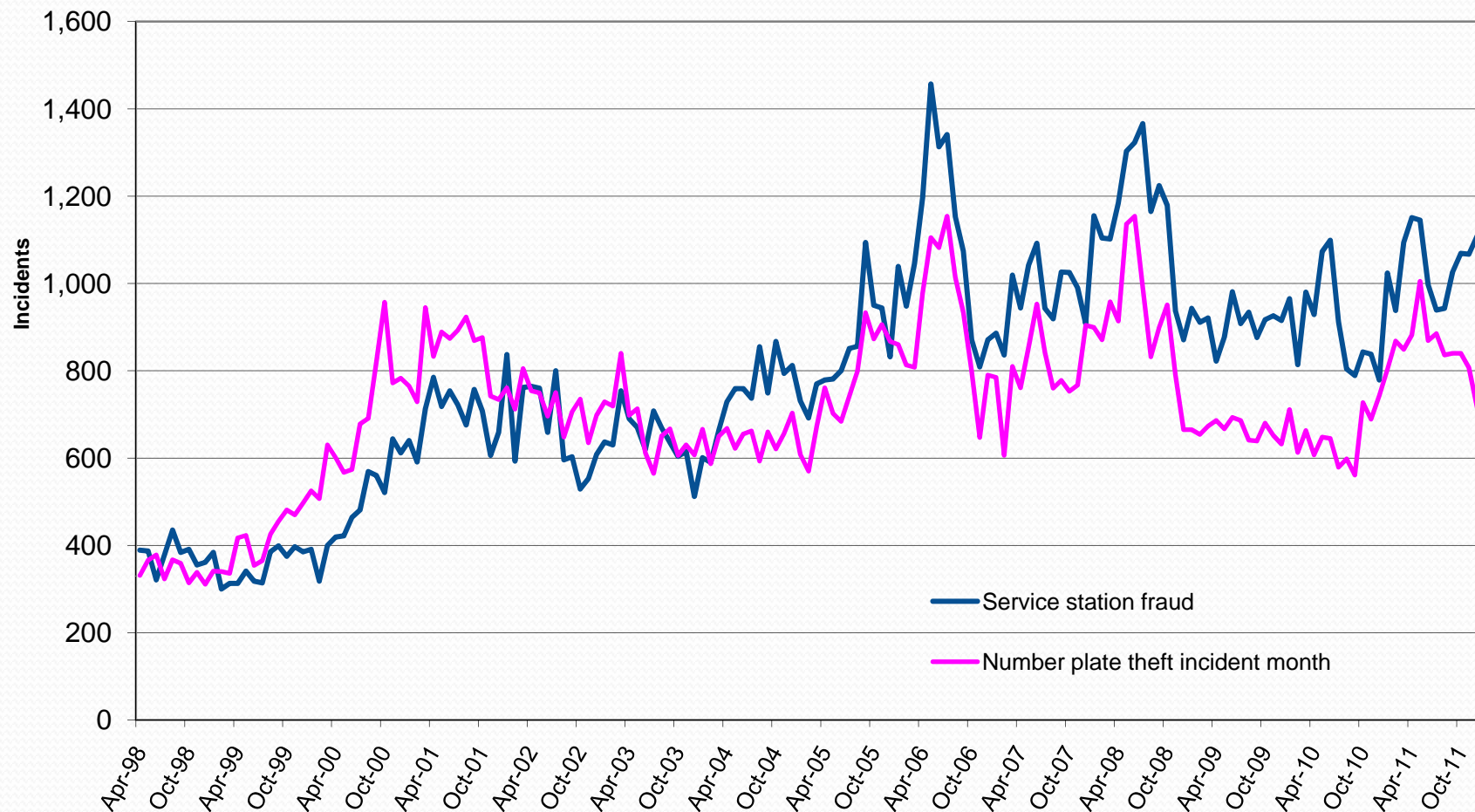
No. of incidents of service station fraud

Price of petrol in Sydney (cents per litre)



Service station fraud & number plate theft

Apr 1998-Dec 2011



What's influencing crime?

- The heroin shortage
- The economy
- The police
- Vehicle security
- Insurance practices



BOCSAR's website
www.bocsar.nsw.gov.au